

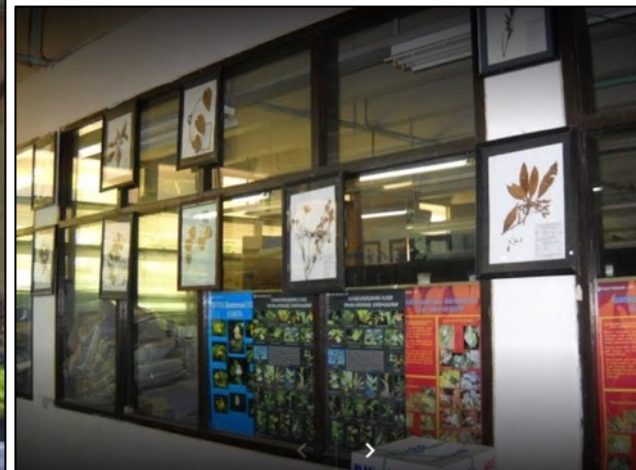


# Digitizing and Databasing Flora of Sumatra

Try Surya Harapan | Herbarium of Andalas University

Asia Regional Engagement meeting and Symposium on Open Science & data use, Bangkok, Thailand

# Herbarium of Andalas University



# Overall objectives



We focused on:

- 1) to digitize and manage herbarium specimens hosted at Herbarium ANDA that will be connected to the GBIF.org
- 2) to build an offline digital database incorporating more detailed information for sensitive specimens.

# Herbarium of Andalas University

Joined 4 years ago

Herbarium of Andalas University is a national herbarium in Indonesia, administered under the management of Andalas University, Padang, West Sumatra, Indonesia and registered in Index Herbariorum with ...



3 datasets 154 citations Indonesia



Total Funded:  
BIFA3 15.000 Euro (GBIF), 8.828 Euro (ANDALAS)  
BIFA4: 14.809 Euro (GBIF), 8.086 Euro (ANDALAS)

[Flora of Sumatra: Vascular plant collection of selected families deposited at Herbarium of Andalas University \(ANDA\)](#) Occurrence dataset

Herbarium of Andalas University (ANDA) is one of the active herbaria on Sumatra, Indonesia. Currently, the herbarium hosts about 65,000 sheets of herbarium collections, consisting of vascular plants a...  
Published by Herbarium of Andalas University  
13,568 occurrences 113 citations

[Sumatra: Digitizing and data basing specimens of the Sumatran Flora deposited at Herbarium Universitas Andalas \(ANDA\)-Part 2](#) Occurrence dataset

Andalas University (ANDA) is one of the active herbaria in Sumatra, Indonesia. Our herbarium mainly from Sumatra and adjacent islands, but limited numbers of collections a...  
Herbarium of Andalas University  
80 citations

[Vascular plant collection from Batang Toru Forest deposited in](#) Occurrence dataset

on in Tapanuli, North Sumatra harbors incredible species diversity. It is home for the Tapanuliensis. We surveyed 10 sites in Batang Toru Forest, coll...  
Andalas University  
citations

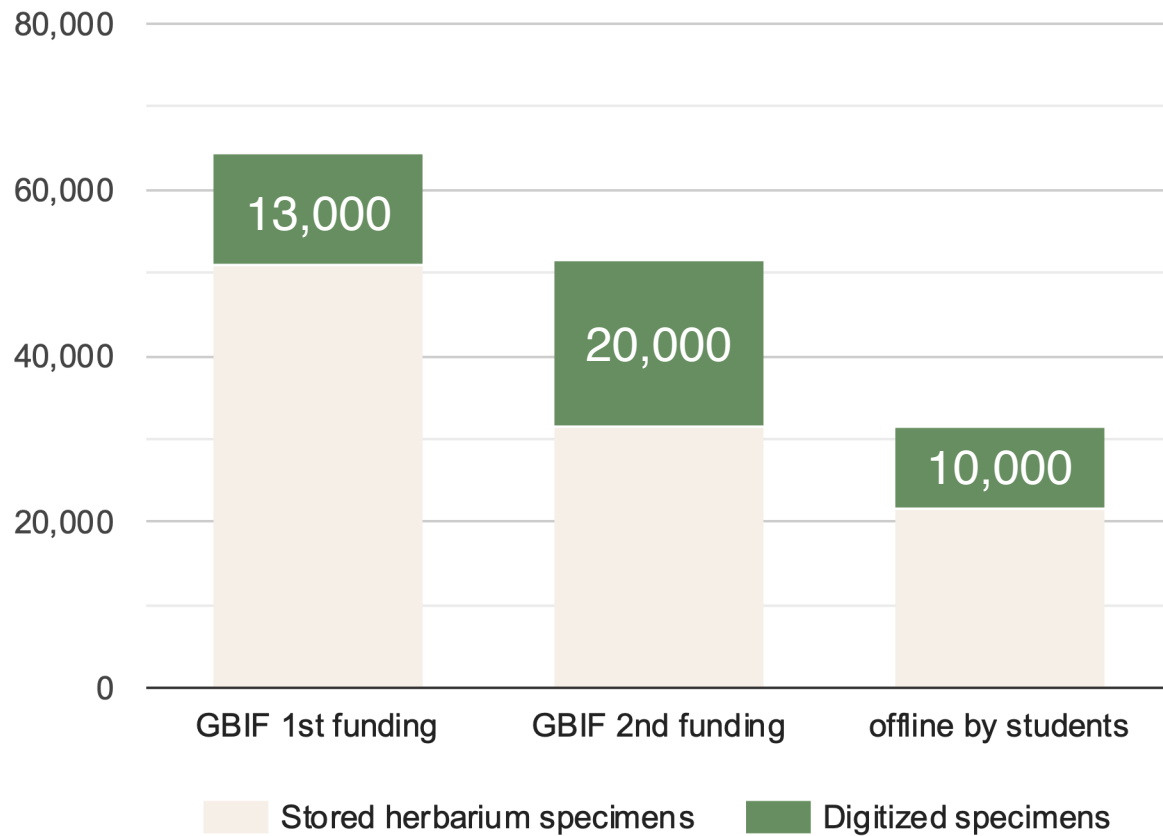
Tools Inside GBIF Login

Advanced

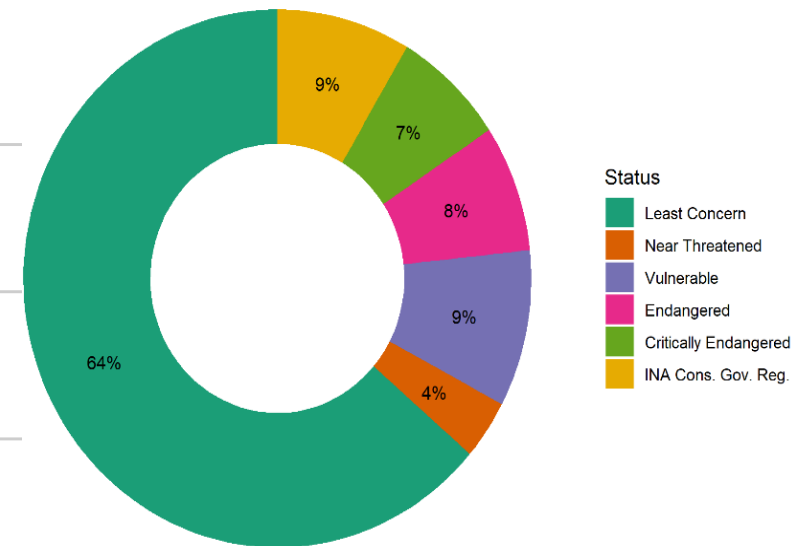
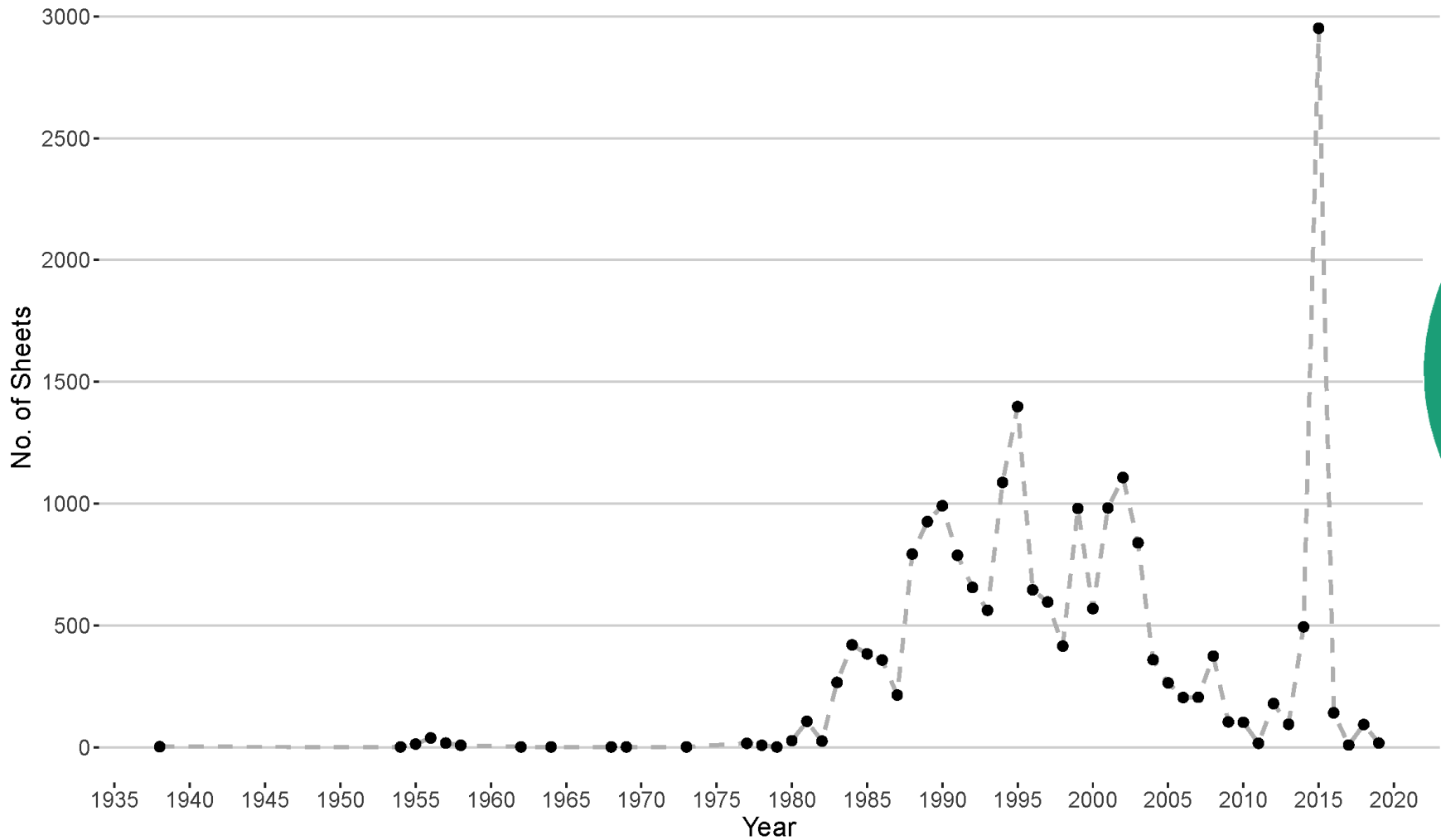

Country or area

https://www.gbif.org/occurrence/200002965

Number of sheets



# Number of sheets published





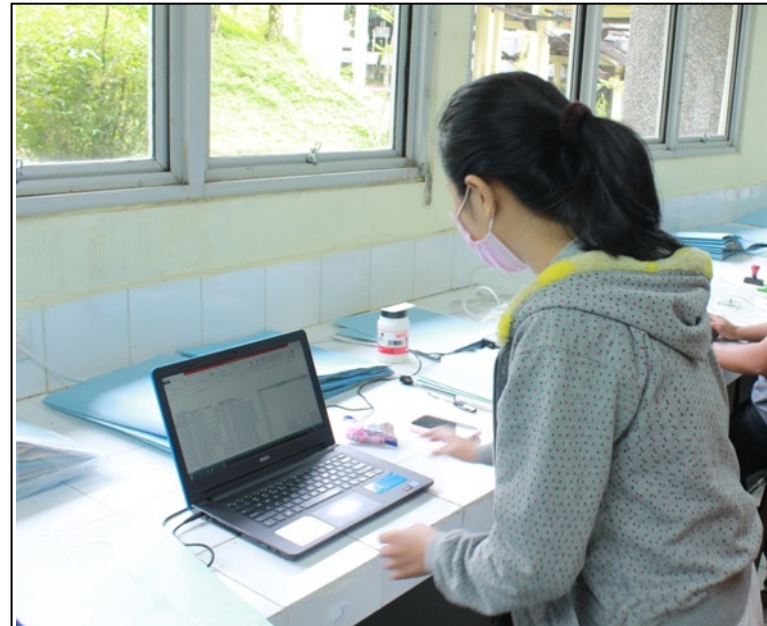
Stakeholder meeting



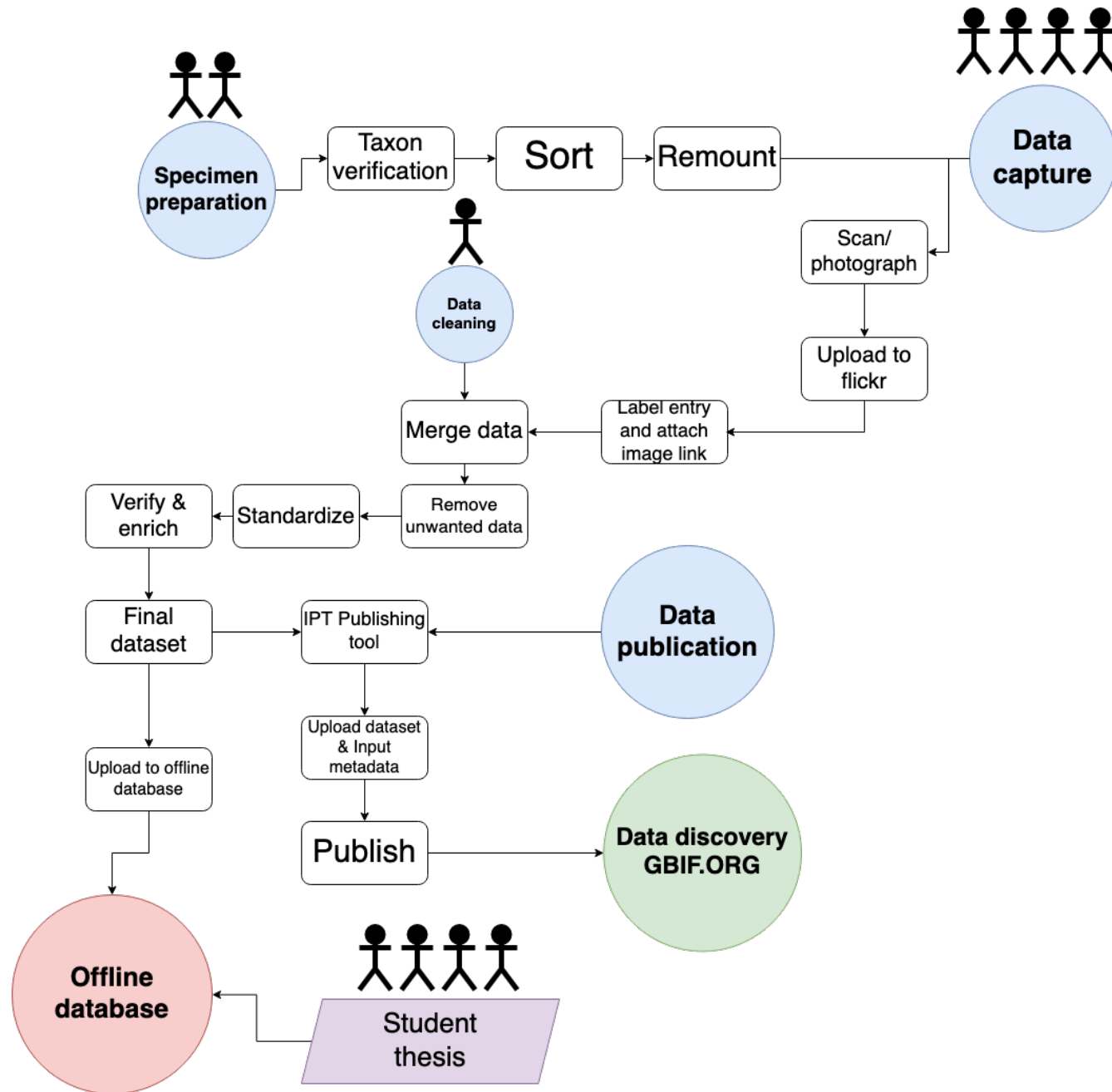
Training for volunteer



Information tech support



Data capture activities support



# Our publishing framework



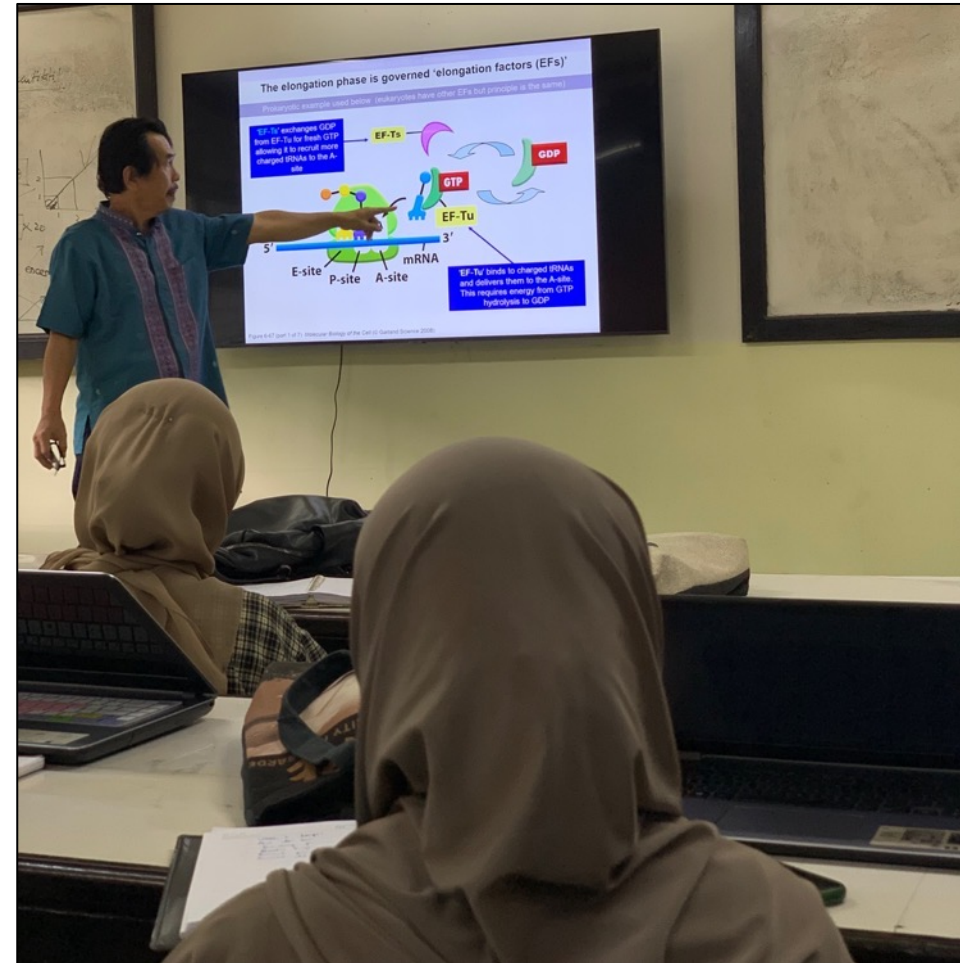
An aerial photograph of a dense forest. The majority of the trees are lush green, but there is a prominent, irregularly shaped area in the upper-left quadrant where the trees are dead and appear as a light greyish-brown. The text "After the project is completed" is overlaid in white, centered horizontally across the middle of the image.

After the project is completed

# Socialization & public awareness for open access biodiversity data



Seminar in Flora Malesiana, Brunei

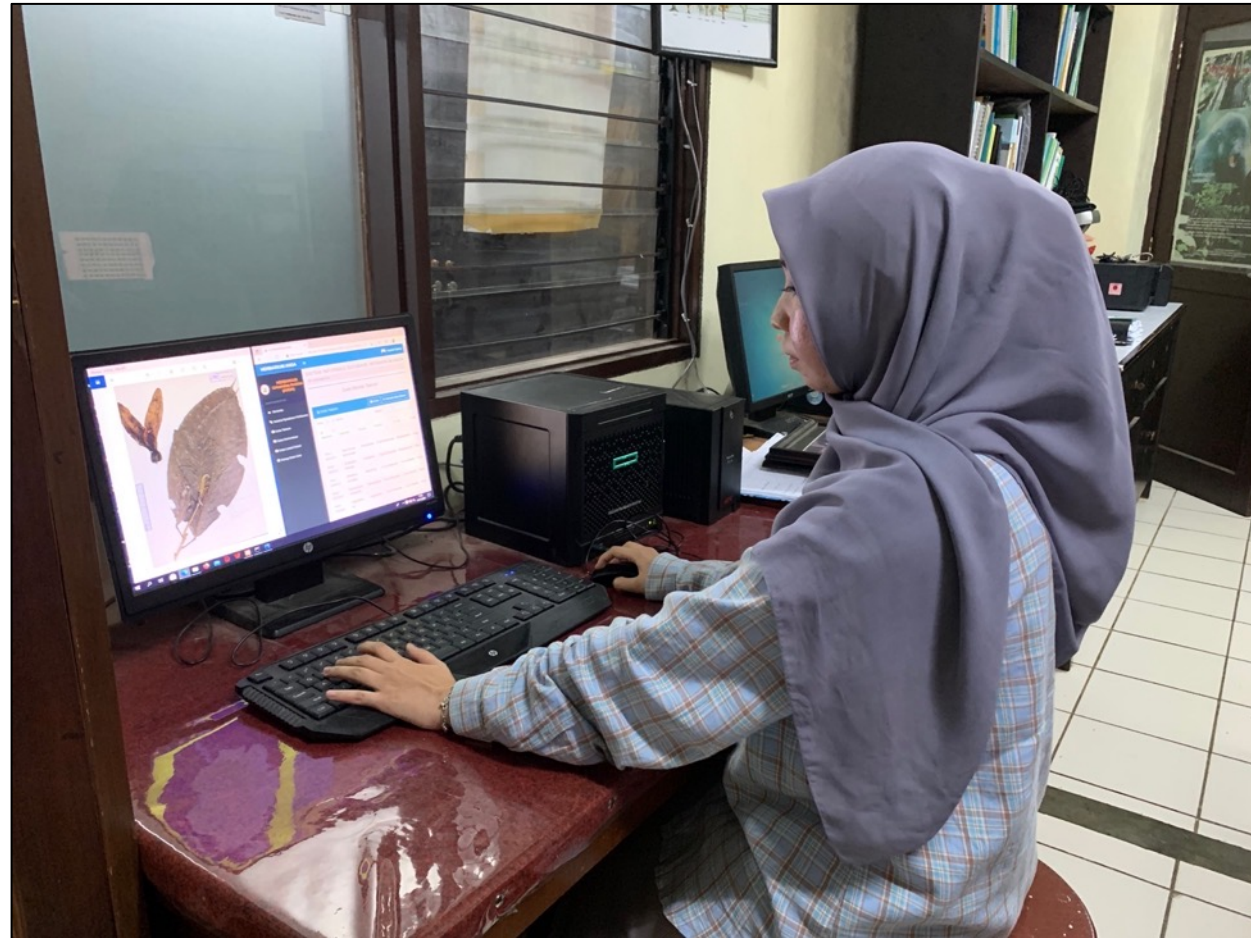


Course topic in Andalas University for undergraduate student

# Provide offline database for Herbarium specimen

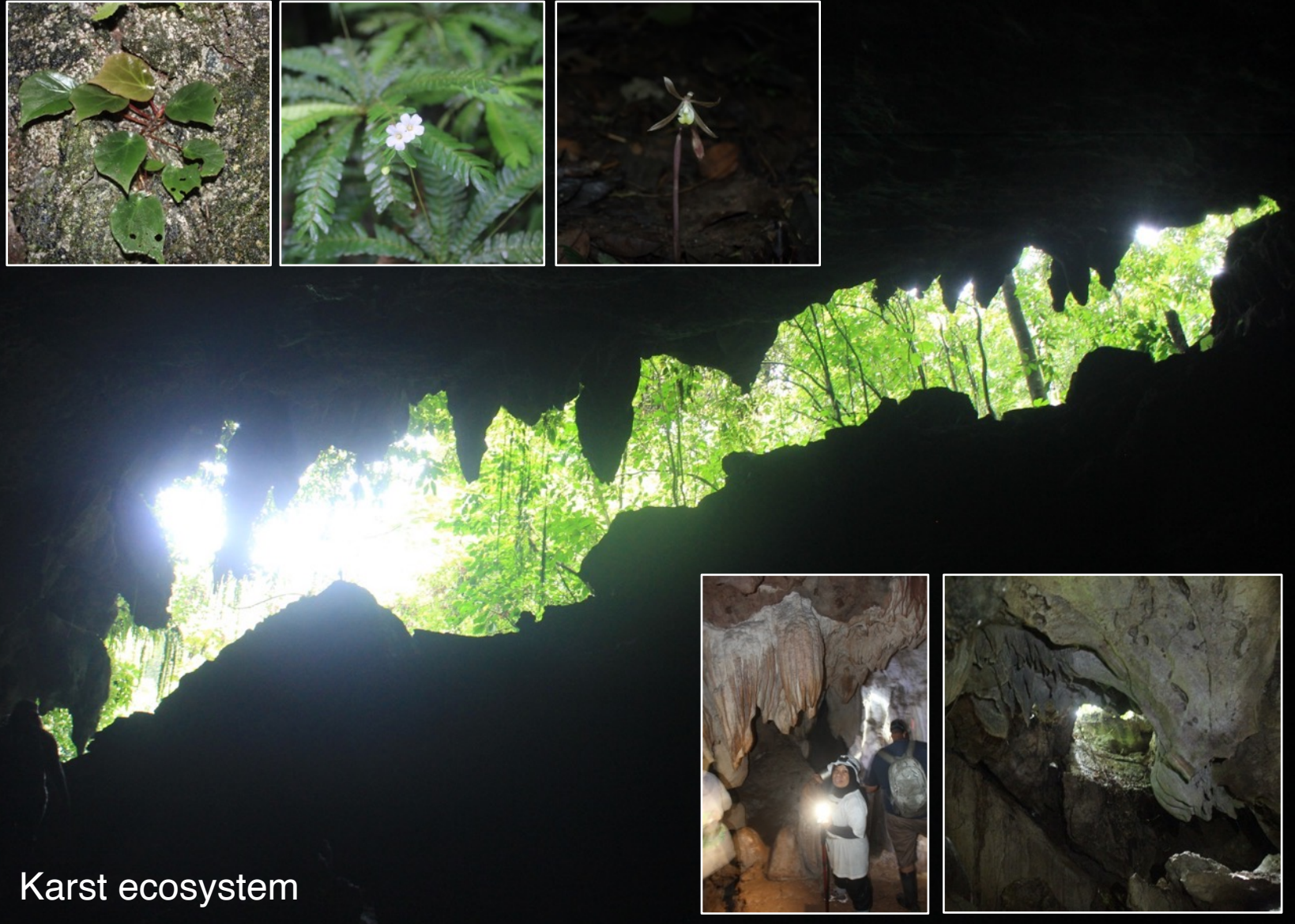


for sensitive species

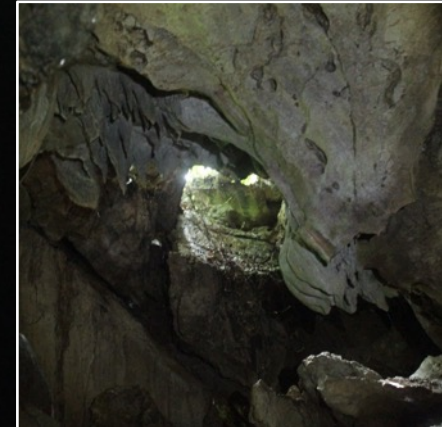


for student' thesis  
+10.000 occurrences and still counting

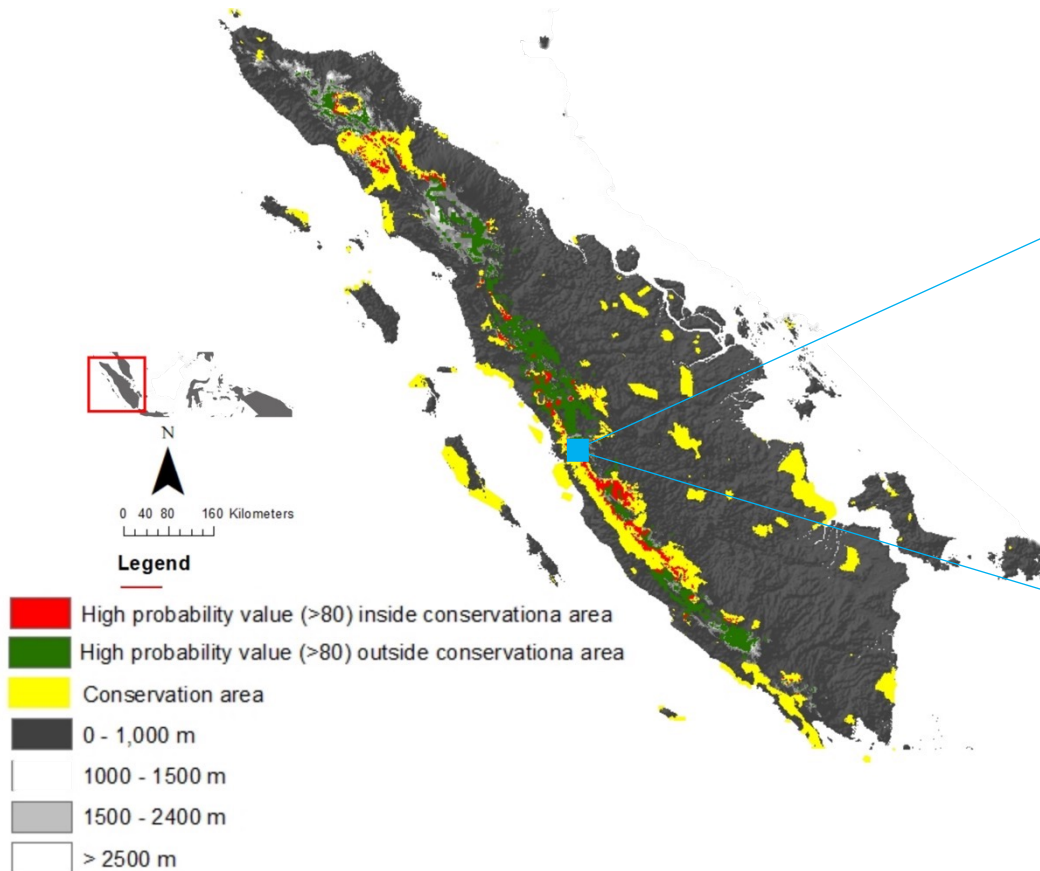
# Supporting national conservation policy: threatened species and ecosystem



Karst ecosystem



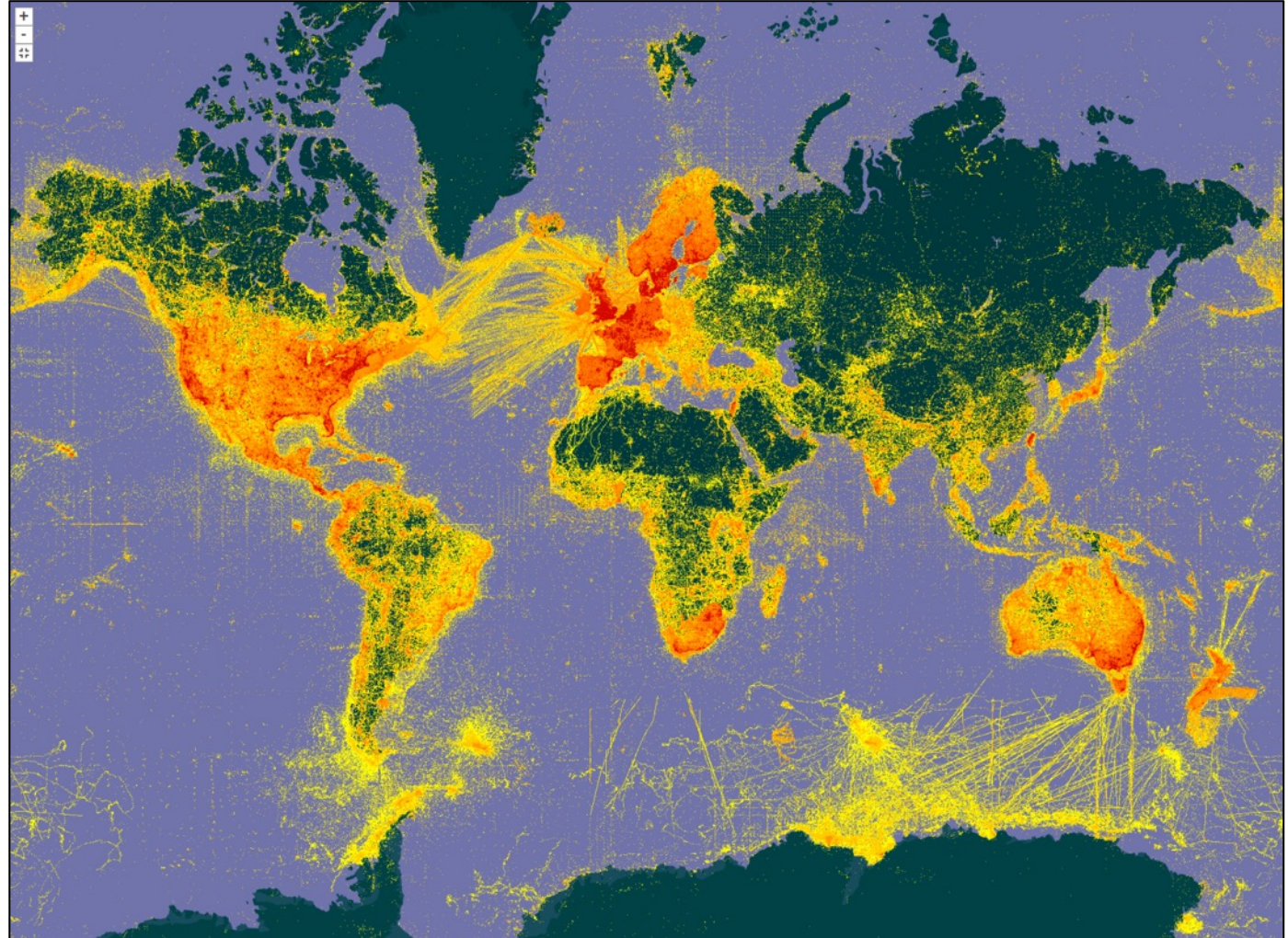
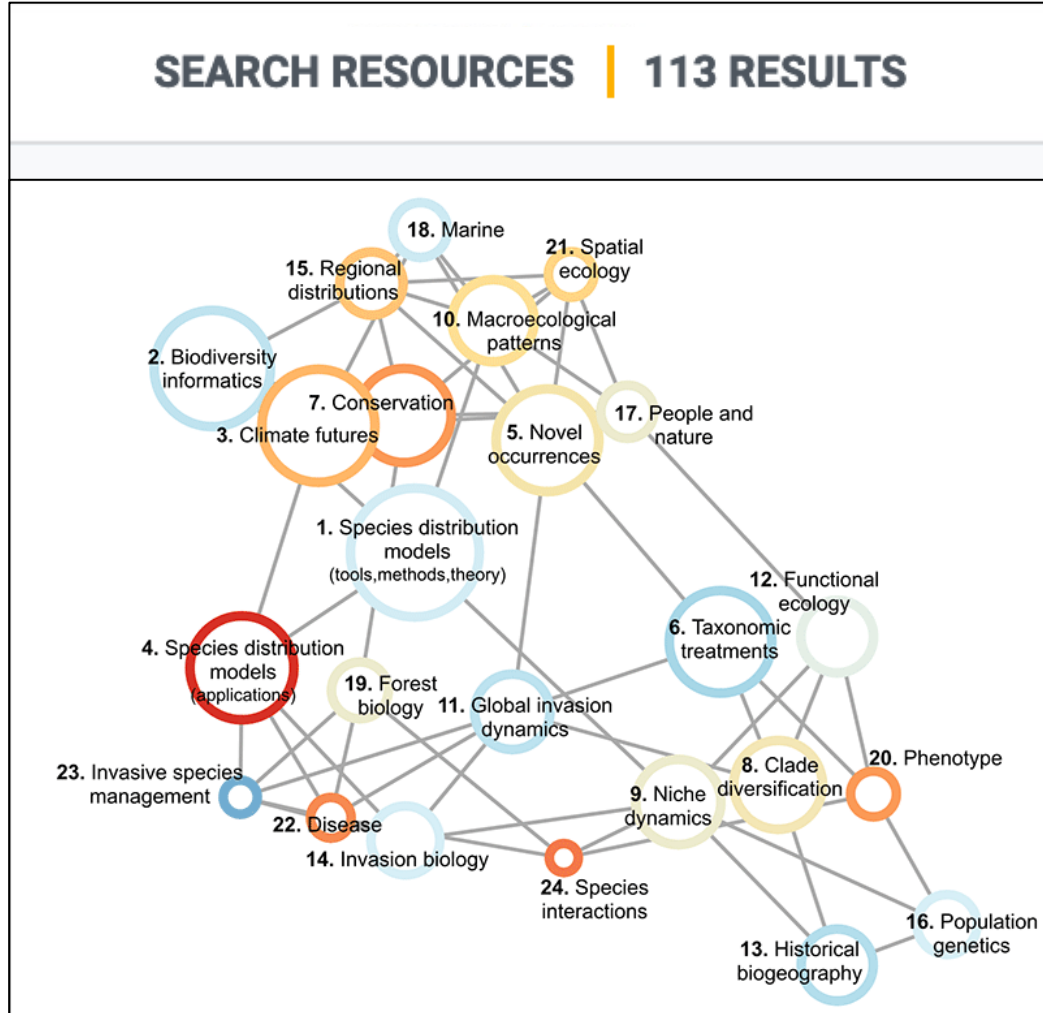
# Propose conservation action



Ex-situ conservation for endangered tree in Solok Botanical Garden

<http://dx.doi.org/10.13057/biodiv/d230402>

# Contribute to global scale research





BRIN  
BADAN RISET  
DAN INOVASI NASIONAL



ขอบคุณ

Thank You

