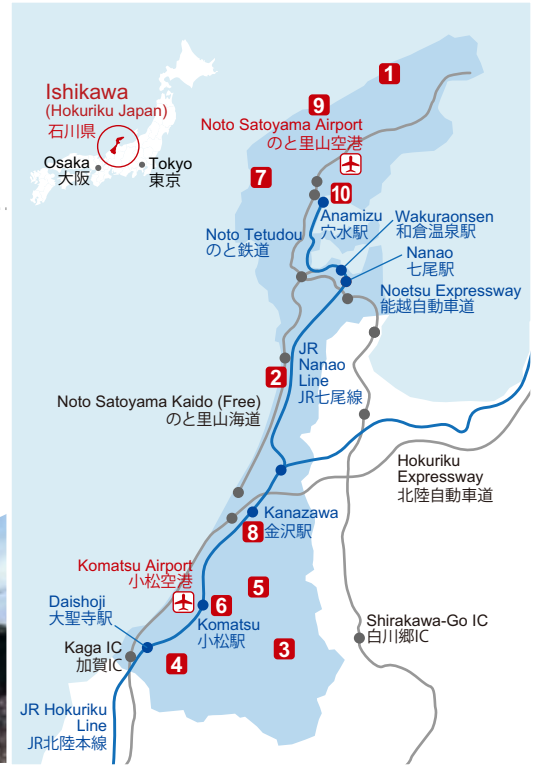




Published by Ishikawa Prefecture Tourism Promotion Strategy Department, International Tourism Division



2016 No.32 Summer Edition

Ishikawa Tourism Newsletter

Agehama Salt Farming



The Noto region has Japan's only Agehama style salt production farm that has a history of over 500 years. The process involves sprinkling sea water on a sandy beach, concentrating and straining the salt, and finally boiling it in a large pot. This handmade production method produces a salt with a mellow taste rich in minerals. Sessions are available in summer and by booking you can make and take home your own salt.

<http://www.hot-ishikawa.jp/kanko/english/20021.html>



Hands-on sessions available here

Michi-no-Eki Suzu Endemura (Suzu) 1

Period: May – September
Details: 30 minute course (¥500)
2 hour course (¥2,000)
2 day course (¥3,500)

Booking required for all courses

Access: 30 minutes by car from Wajima City and Suzu City

Climbing Mt. Hakusan 3



Mt. Hakusan is one of Japan's Three Sacred Mountains which has a range of 2,000m class mountains. Many different alpine plants can be found as well as clusters of hot springs. The peaks are covered in snow all year round. Try hiking to the top and see everything Mt. Hakusan has to offer. This trekking course is a must for those who enjoy walking amongst the wildlife.

<http://www.kagahakusan.jp/en/>



Hiking Season: July – Mid October

Access: 2 hours by Hakusan Tozan Bus from JR Kanazawa Station Kenroku-en Garden Exit Bus Stand 1, alight at Betto Deai Tozan Guchi (last stop)
2 hours by Hakusan Tozan Express (shared taxi) from Komatsu Airport, go directly to Betto Deai

Sizzling Summer News

The best spots and things to do in Ishikawa this summer.

Yamanaka Onsen - Kakusenkei Kawadoko 4

Period: April – October 9:30 – 16:00
Location: Close to Ayatori Bridge, next to Fudoji Waterfall
Fee: Kawadoko Set (tea and confectionary)
Adults ¥600 Elementary school students ¥500
Seating-only (includes tea)
Adults ¥300 Elementary school students ¥200
Access: By CANBUS (Mountain Route) from JR Yamanaka Onsen Station, alight at Yamanaka Onsen Kiku no Yu/Yamanaka-za bus stop, walk 300m

Kakusenkei is Hokuriku's top gorge for sightseeing and Kawadoko will be open again this year. Come for a short break and relax to the soothing sounds of the river.

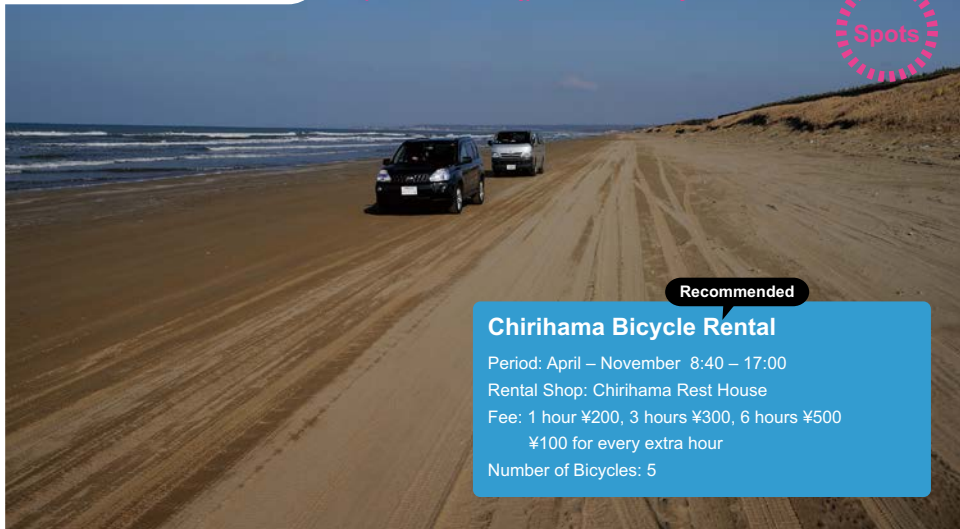
<http://www.yamanaka-spa.or.jp/global/eng/taiken3.html>



Chirihama Nagisa Driveway 2

This is Japan's only beach driveway (8km) that cars, buses, motorbikes and even bicycles can drive on. Take your wheels for a spin with a gentle sea breeze on the wide beach.

<http://www.hakui.ne.jp/kankou/0506bicycle.html>



Recommended

Chirihama Bicycle Rental

Period: April – November 8:40 – 17:00
Rental Shop: Chirihama Rest House
Fee: 1 hour ¥200, 3 hours ¥300, 6 hours ¥500
¥100 for every extra hour
Number of Bicycles: 5



Shirayama Hime Shrine – Otsuitachi Mairi **5**

Depart from Kanazawa in the early morning and take a trip to one of Japan's most prominent spiritual sites – Shirayama Hime Shrine. Official visits to the sanctum can be made on the first day of each month.

<http://whitering.co.jp/index.html>

Dates: 1st July (Fri), 1st August (Mon),
1st Sep (Thu), 1st Oct (Sat)

Fee: Adults ¥6,800 Children ¥4,800

Duration: 4 hours 15 minutes (breakfast included)

Science Hills Komatsu – 3D Studio **6**

Be overwhelmed at Japan's largest 3D dome theatre.



Polaris (Japanese / English)

A polar bear and penguin who met in the North Pole come up with a plan to explore space.

Screening: Until 30th September

Times: Weekends, public holidays, summer holiday weekdays

(11:10 – 11:50, 14:40 – 15:20)

(Regular weekdays 10:00 – 10:40, 11:00 – 11:40, 12:20 – 13:00, 14:40 – 15:20, 15:50 – 16:30)

<http://science-hills-komatsu.jp/wp/7209/>



Night on the Galactic Railroad (Japanese / English / Chinese)

The fantasy world of the Japanese tale Night on the Galactic Railroad is brought to life.

Screening: Until 30th September

Times: 13:30 – 14:10

(Regular weekdays 10:00 – 10:40, 11:10 – 11:50, 12:20 – 13:00, 14:40 – 15:20, 15:50 – 16:30)

<http://science-hills-komatsu.jp/wp/7393/>

Tickets prices (per show): Adults ¥600, High school students ¥400, 3 year olds – middle school students ¥200

Access: 3 minute walk from JR Komatsu Station East Exit



Wajima Winery Restaurant **7**

Heidee Winery in Wajima has opened its restaurant Franc Jeu. Enjoy the taste of French cuisine made with ingredients from Okunoto and the company's fine wines while soaking up the views of the Japan Sea and vineyards.

Open: 11:30 – 14:00, 17:30 – 20:00

Closed: Tue

Price: Lunch ¥2,600+ Dinner ¥5,000+

Access: 30 minutes by car from Noto Airport

2 hours by car from Kanazawa

<http://franc-jeu.jp/>



Kanazawa Beauty Salon **8**

Relax at a 150 year old merchant's house near the West Tea District. Beauty treatment is given with the use of gold leaf, natural Noto camellia and other local Ishikawa goods.

Appointments: Please discuss with staff

Duration: 60 minutes +

Fee: ¥12,000 +

Access: Hokutetsu Bus, alight at Hirokoji bus

stop, 3 minute walk

<http://kanazawa-beauty-salon.com/english/>



Wajima Drama Memorial Museum **9**

The museum exhibits sets used in the TV drama Mare which was set in Noto.

Drama related souvenirs and sweets are also available.

Open: 8:00 – 17:00

Fee: Free

Access: 5 minute walk from Wajima Marine Town

<http://wajimanavi.lg.jp/www/view/detail.jsp?id=181>

Recommended Summer Events

◆ Kanazawa Castle & Kenrokuen Garden Light-up – Summer Event **8**

24th – 26th June, 1st – 3rd July, 18th – 20th August

◆ Gojinjo Taiko Drumming – Free Performance **9**

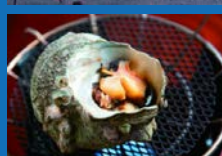
29th April – 6th November, 20:30 – 20:50 Wajima Kiriko Museum Motenashi Plaza

◆ Furusato Yamanaka Festival **4**

22nd July – 24th August, 19:45 – 21:30 Yamanaka Onsen Yamanaka-za area

◆ Anamizu Turban Shell Festival **10**

15th June – 15th July Takes place at 10 shops in Anamizu



Special

Noto Kiriko Festival

From summer to autumn, Kiriko Festivals take place all over parts of the Noto region, the northern part of Ishikawa. The Kiriko lantern floats are paraded through the streets with portable shrines for the deities to ride on. At dusk, the Kiriko are lit up creating a magical ambience as they come and go.



History of the Kiriko Festivals

The date of when the first proper Kiriko Festival started in Noto is unknown. However it has been confirmed that a 4m – 5m tall bamboo Kiriko with a small lamp on top was used at the Sumiyoshi Shrine festival in Wajima in 1647. The success of the Kitamaebune trade ship brought economic prosperity to the port towns in Wajima and the surrounding area (during the 1800s), and with this the Kiriko floats grew in size and were decorated in Wajima lacquer. It is said that the floats were as tall as 10m in height during the 18th Century, however in the 20th Century with the development of telegraph poles, they had to be shortened to 4m – 6m.

At present, there are Kiriko festivals taking places in over 100 regions from early July to mid-October. Unfortunately there has been a decrease in float bearers on festival days and in turn the number of Kiriko used is falling every year. Despite this, inclusive of the preserved floats there are 700 – 800 Kiriko.



Individualistic Kiriko Festivals Taking Place In Many Areas

Different things happen at each Kiriko Festival. There is the Abare Festival which burns the float and portable shrine (Noto Town); Issaki Hoto Festival which features 6 giant Kiriko (Nanao City); Wajima Taisai Festival which has beautiful lacquer coated floats standing side by side (Wajima City). The Kiriko differ in size and design, matching the style of each place they come from.



Schedule for Main Kiriko Festivals

July

Abare Festival (1st Fri – Sat / Noto Town)
Nanao Gion Festival (2nd Sat / Nanao City)
Koijihi Festival (Day before Sea Day / Noto Town)
Iida-machi Toroyama Festival (20th – 21st July / Suzu City)
Noto-jima Koda-no-hi Festival (Last Sat / Anamizu Town)
Nafune Taisai Festival (31st July / Wajima City)
Yanagida Taisai Festival (16th July / Noto Town)

August

Issaki Hoto Festival (1st Sat / Nanao City)
Horyu Tanabata Kiriko Festival (7th August / Suzu City)
Saikai Festival (14th August / Shika Town)
Okinami Tairyo Festival (14th – 15th August / Anamizu Town)
Sosogi Taisai Festival (17th – 18th August / Wajima City)
Wajima Taisai Festival (22nd – 25th August / Wajima City)
Niwaka Festival (Last Sat / Noto Town)
Togi Hassaku Festival (4th Sat – Sun / Shika Town)

September

Jike Kiriko Festival (14th September / Suzu City)
Tako-jima Kiriko Festival & Hayafune Kyogen Play (10th – 11th September / Suzu City)
Shoin Kiriko Festival (14th – 15th September / Suzu City)
Ogisode Kiriko Festival (3rd Sat – Sun / Noto Town)

Feel the Spirit of the Festivals Anytime at the Kiriko Lantern Museum 9

The Kiriko Lantern Museum in Wajima's Marine Town has the oldest existing Kiriko lantern floats and models of the Noto Peninsula festivals displayed. There are over 30 floats of various sizes including ones that have been designated as cultural properties by Wajima City. The room is arranged to give the same magical feeling as being in a festival with a summer evening-like lighting paired with the sound of festival music and people being played in the background.

Closed: Open all year

Fee: Adults ¥620, High school students ¥470, Junior and elementary school students ¥360 (Discounts for groups also available)

