

9:00 Depart Kanazawa

 40 minutes

1 9:40 Chirihama Beach Driveway

[千里浜なぎさドライブウェイ]

The only sandy beach in Japan that is open to cars. Traffic runs in both directions on the 8 km stretch.


 1 hour 20 minutes R249 along the Nanao Bay

2 11:00 Wajima Morning Market [輪島朝市]

One of the three biggest morning markets in Japan, with over 200 stalls selling freshly caught fish, homegrown fruits and vegetables and locally made crafts.



(Lunch: Wajima)



 5 minutes

3 **13:00 Wajima Kiriko Art Museum** [輪島キリコ会館]

The museum displays kiriko, towering lanterns carried in processions during summer festivals in Noto.



 15 minutes

4 **13:45 Senmaida Rice Terraces** [白米千枚田]

Enjoy the splendid view of 1,000 small rice paddies on the steep slopes along the Japan Sea.

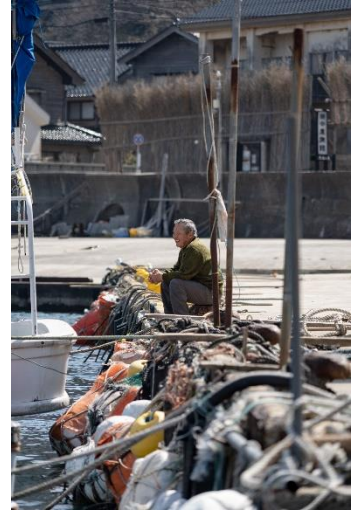


 40 minutes

5

14:40 Magaki no Sato [間垣の里]

The traditional village where bamboo fences called magaki are erected to protect houses from strong salty winds in winter and the western sun in summer.



40 minutes

6

15:30 Yase Cliff [ヤセの断崖]

A precipitous cliff jutting out into the Sea of Japan. The rugged coast and strangely shaped rocks can be seen from the deck.



25 minutes

7

16:25 Ganmon Cave [巖門]

Sea cave formed as water eroded a sizeable hole into a rock rising out of the sea. You can walk down on the path to the rock and enter a cave beside the gate.



1 hour 15 minutes

18:30 Back to Kanazawa and
return the car

[View on Google Map](#)

