



Ishikawa Tourism Newsletter

WINTER 2021 | NO. 53



Feature

A TRIP THROUGH WINTER IN ISHIKAWA PREFECTURE

In this issue, we hope to provide the inspiration for your next travel itinerary through the theme of winter.

ISHIKAWA, JAPAN



4 days &
3 nights

The Snowy Wonderland of Ishikawa



Oyama-Jinja Shrine



Nagamachi Samurai District



Kenrokuen Garden



Hakusan Ichirino Onsen Ski Resort



Snowman Festival



DAY 1

Ishikawa has one of the highest snowfall rates in Japan, and in winter, the prefecture becomes covered in white. Here, traditions and culture have been cultivated by people who have lived in

harmony with the snow for generations. Let's grab a thick coat and go experience it!

AFTERNOON

We begin our trip at **Oyama-Jinja Shrine**, which is dedicated to Toshiie Maeda, the first Kaga lord. The shrine features a gate combining Japanese, Western and Chinese styles with stained glass windows, and a tranquil garden whose ponds and bridges complement the snow. In December, at the **Nagamachi Samurai District**, straw mats known as 'komo' are used to protect the earthen walls from snowfall. This is a custom that signals the arrival of the new season in Kanazawa, with the streets starting to look more and more like winter. Next, it's off to **Daijōji Temple**. Here, you can experience zazen with monks, with Sunday afternoon meditation sessions recommended for first-timers. Why not take some time out for quiet reflection? Afterwards, make your way to **Fukumitsuya**, Kanazawa's longest established sake brewery. Winter is the season for fermentation, an essential step in sake production. Having toured the brewery and learned about the depth of the sake making process, your evening drink will taste even more exceptional.



Fukumitsuya Sake Brewery

EVENING

Before dinner, head to **Kenrokuen Garden**. The 'yukizuri', rope structures designed to prevent the branches from breaking under the weight of the snow, are lit up to provide a fantastic spectacle. Your much awaited dinner can be found in the **Katamachi-Korinbo** area. Enjoy piping hot Kanazawa oden, kobakogani crab, yellowtail and other winter delicacies together with Japanese sake. (Stay overnight in Kanazawa)

DAY 2

Day 2 takes you to the Hakusan area. One of Japan's Three Sacred Mountains, Mt. Hakusan stands at an altitude of 2,702 meters above sea level, and the area is home to a local culture

made by a reverence for the mountain and the falling snow. You can experience beautiful natural scenery including virgin forests, local sake made from underground water, and mountain delicacies such as wild game and mountain stream fish.

MORNING

The **Hakusan Ichirino Onsen Ski Resort** is about an hour's drive from Kanazawa City. With just a small trip, you will find pure white slopes awaiting you. First, have some fun skiing.

AFTERNOON

In the evening, go see the **Snowman Festival**, where snowmen of all shapes and sizes can be seen around town. The insides of the snowmen are illuminated with candles, creating a scene just like out of a fairy tale.

EVENING

In the evening, head to Hotel Roan to relax after a long day of skiing. The hotel has a traditional Japanese style dining area complete with irori fireplaces. Here you can enjoy wild game meat dishes made from bear and boar caught on the mountain. (Stay overnight in Hakusan)

DAY 3

MORNING

The Bunao Observatory is the only facility on the mountain where you can watch wildlife in their natural habitat. Head out into the snowy wilderness with a pair of traditional snow shoes, and you might just come across antelope or Japanese monkeys.

AFTERNOON

In the afternoon, go see the Kaga area. At the **Yamanaka Onsen Onabe no Furumai Festival**, you can eat hot pot made using local ingredients. Served only during the winter months, this mild-flavored dish will warm you to the core. Take a stroll along Yuge-kaido Street besides the snow-covered Korogi Bridge. Here you will find various stores selling items including antiques, Yamanaka lacquerware, Kutani ware, and modern handicrafts. Maybe you can find something special to take home with you?

EVENING

In the evening, stay in **Yamanaka Onsen**, where you can soak in a 1300-year-old hot spring and enjoy the beauty of snow-white valleys. Despite being located in the mountains, Yamanaka Onsen is also close to the Sea of Japan, with fresh seafood being delivered from the Kaga Hashidate fishing port. At the port, crabs of the highest freshness are lined up for auction. Here you can enjoy seasonal marine produce in a relaxed atmosphere. (Stay overnight in Yamanaka Onsen)

DAY 4

MORNING

The last day begins at the **Kamoike Observation**. Kamoike is one of the most popular wintering grounds in Japan for thousands of geese and ducks from early November to the end of February. The traditional saka'ami hunting method, where wild ducks are caught using special nets thrown up in the air, has been handed down since the feudal era to this day. For lunch, head to a restaurant in Kaga City to enjoy duck cuisine.

Wild duck has a good balance of lean and fatty meat, and lacks the strong smell of other game. Be sure to also try **jibu-ni**, a local dish of Ishikawa Prefecture.

AFTERNOON

The last stop on our trip is the **Nakaya Ukichiro Museum of Snow and Ice**. Nakaya spent his entire life studying snow and was the first person in the world to successfully create it artificially. Here, you can learn about his research and snow crystals, as well as try your hand at making ice pendants and observing diamond dust. Complete your Ishikawa winter journey in the café by looking out at Mt. Hakusan across Lake Shibayama, (Return home)



Now Open!

SHOPPING

AEON MALL HAKUSAN



<https://hakusan.aeonmall.com/> (Japanese only)

In July 2021, the largest Aeon Mall in the Hokuriku area, boasting over 200 shops, opened in Hakusan City, a 20-minute drive south of the center of Kanazawa. The mall offers a wide range of fresh and local products and services, a food area with about 50 popular local stores, one of the largest fresh fish corners at Aeon in the Hokuriku area, as well as a wide selection of local specialties, popular sweets, and alcoholic beverages. In addition, the new bus service that departs from the Kenrokuenshita/Kanazawa Castle stop means that accessibility is no longer a concern. Enjoy shopping for Hokuriku food and fashionable Japanese goods at Aeon Mall Hakusan.

HOTEL

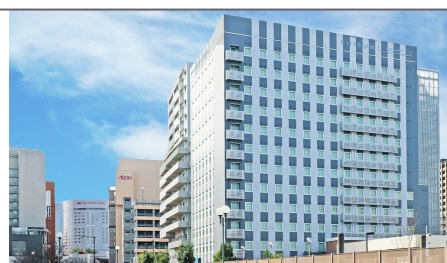
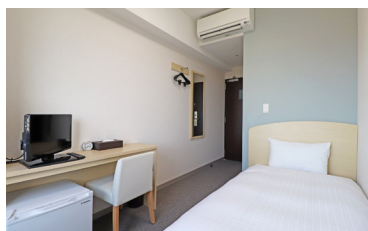
New Hotel Opening Information

● Chisun Budget

(2021.10.1 Reopening)

<https://www.solarehotels.com/hotel/ishikawa/cb-kz/>

Conveniently located 5 minutes by foot from JR Kanazawa station, this hotel has 392 rooms spread over 12 floors. Priding itself in always being clean, simple, and affordable, the hotel provides a comfortable space with smart services at a reasonable price.



● Korinkyo

(2021.10.1 Opening)

<https://www.korinkyo.com/>

A new hotel in the Korinbo area of Kanazawa featuring an aroma oil distillery. The aromatic water extracted from the distillery on the first floor is used in the refreshers in the guest rooms, with the sauna and bath on the rooftop offering an authentic lōlyly experience.

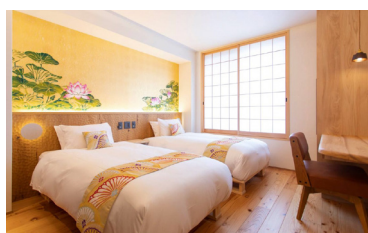


● Hotel Ethnography, Kanazawa

(2021.10.26 Opening)

<https://www.hotel-ethnography.com/kanazawa/>

A 30-room boutique hotel based in Gion, Kyoto with a concept of "experiencing living culture through the five senses". Guests can feel as if they are connected to the local area and its people from the moment they enter.



● Ryusuke 25

(2021.9.18 Opening)

<https://ryusuke25.com/>
(Japanese only)

A renovated 90-year-old townhouse located in Ryusuke-cho, Komatsu City. Each floor is rented out to only two groups per day. In every corner you can feel the skill of artisans, as well as the stylishness of townspeople from the past.

● Machi no Odoriba

(2021.10.10 Opening)

<https://odoriba.net/>

Machi no Odoriba is a 150-year-old samurai residence purchased in 1897 by Shoda Juntaro, half-brother of Kanazawa's great writer Tokuda Shusei. This refined hotel describes itself as a "sunny place where time melts away".

INFORMATION

Coronavirus Prevention Measures in Ishikawa Prefecture

Ishikawa has established a certification system for restaurants and accommodation facilities whose infection prevention measures meet the requirements of the prefecture.

We are working to create an environment where tourists can enjoy their trip more safely and with peace of mind by ensuring that businesses take thorough infection prevention measures including installing alcohol disinfectants and partitions on tables.

Number of certified stores: 4,238 restaurants; 669 accommodation facilities (as of November 1, 2021)



ISHIKAWA TRAVEL