

# Kanazawa and Kaga hot spring resorts

After the fun activities in Kanazawa, head to Kaga, located in the southwestern part of Ishikawa. Kaga is a peaceful area and home to four unique hot spring resorts. It is equally blessed with a great diversity of natural landscapes and a rich cultural heritage.

## TRIP HIGHLIGHTS

- Stay at Ryokan, the traditional Japanese inn in Kaga to soak in hot spring spa surrounded by serene nature
- Enjoy a stroll on the waterside trail in picturesque and colorful Kakusenkei Gorge
- Get in touch with the history of Kitamaebune merchant ship and world-famous Kutani-yaki porcelain



## ITINERARY

Day	Activities	Stay
Day 1	<b>Kanazawa</b> Visit Nagamachi Samurai District, 21 <sup>st</sup> Century Museum of Contemporary Art, Kanaza and D.T. Suzuki Museum.	<b>Kanazawa</b>
Day 2	<b>Kanazawa</b> Visit Omicho Market, Kanazawa Castle Park, Kenrokuen Garden and Higashi Chaya District. Join Japanese cooking class.	<b>Kanazawa</b>
Day 3	<b>Kaga</b> Depart by express train to Kaga. Visit Kitamaebune Ship Museum, Hashitate Fishing Port and Amagozen Cape.	<b>Kaga Onsen Resorts</b>
Day 4	<b>Kaga</b> Visit Kakusenkei Gorge, Yuge-kaido Street and Natadera Temple.	

# Day 1

12:00 Arrive at Kanazawa Station

(Lunch: Kanazawa Station)

1

## 14:00 Nagamachi Samurai District [長町武家屋敷]

Nagamachi is a well-preserved neighborhood of samurai houses. The cobblestone streets and tiled earthen walls are characteristic of wealthier samurai districts in Kanazawa. One highlight is the Nomura Residence. Enjoy its inner garden with tranquil streams and a miniature waterfall.



10 minutes

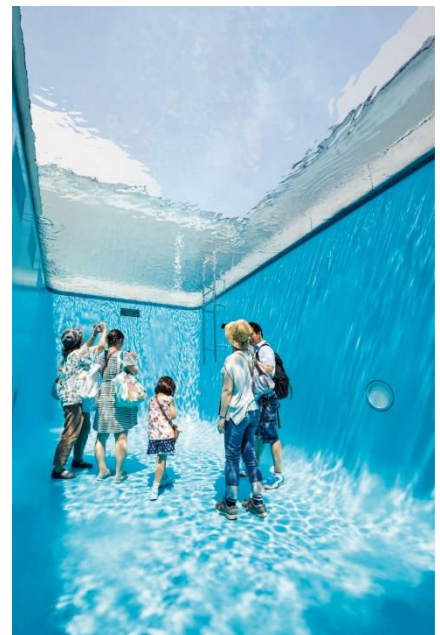
2

## 15:00 21<sup>st</sup> Century Museum of Contemporary Art, Kanazawa [金沢21世紀美術館]

This progressive museum situated in the center of Kanazawa is quite popular among the locals and tourists alike with the unique exhibits and installations. The outdoor exhibits and surrounding lawns make the museum grounds feel akin to a family park.



10 minutes





## 16:10 D.T. Suzuki Museum [鈴木大拙館]

This museum is dedicated to the life and ideas of Daisetz Suzuki, a prominent Buddhist philosopher who was born in Kanazawa and popularized Zen in the West. Take time for thoughtful meditation in the three idyllic landscaped gardens, which include a glassy pond for self-reflection.



Stay in Kanazawa

## ASK THE LOCALS

### *What is the nightlife in Ishikawa like?*

Nightlife in Ishikawa is diverse. Kanazawa, especially the **Katamachi district**, has modern, big-city bars, pubs, clubs, and izakaya catering to a wide variety of tastes. There are traditional izakaya, local watering holes, **illumination events**, fireworks festivals, and many other nighttime activities around the prefecture.



## Day 2

4

### 10:00 Omi-cho Market [近江町市場]

Omi-cho Market has been the largest fresh food market in Kanazawa since the Edo period. Its busy network of covered streets holds over 180 stall and restaurants that sell fresh seafood, vegetables, fruit, and many other local products.



5 minutes

5

### 11:00 Cooking Studio Kanazawa Salon (Japanese home cooking) [金澤さろん]

Cooking Studio Kanazawa Salon offers cooking lessons in exquisite Japanese cuisine in English. While you learn the basics of Japanese cooking, you can also gain the knowledge of koji and its products (miso, soy sauce, sake, etc.) which have been supporting the health of Japanese over a thousand years.





6

## 13:30 Kanazawa Castle Park [金沢城公園]

Kanazawa Castle was home to the Maeda family during their rule of the Kaga domain. Some buildings including Kahoku-mon Gate and Gyokusen'inmaru Garden have been faithfully renovated.



7

## 14:30 Kenrokuen Garden [兼六園]

Kenrokuen was constructed by feudal lords of Kaga clan as the outer garden of Kanazawa Castle. The garden's appearance changes dramatically every season, with cherry blossoms in spring and Yukizuri (a set of ropes to protect trees from the region's heavy snowfall) in winter.





10 minutes

or



20 minutes

8

## 16:30 Higashi Chaya District [ひがし茶屋街]

The district's traditional buildings and lattice-work windows retain the atmosphere of their 200-year history. Today, many of these buildings function as cafes, restaurants, sweet shops and craft shops, but some are still geisha teahouses. Two traditional teahouses, 'Shima' and 'Kaikaro', are open to public.



Stay in Kanazawa

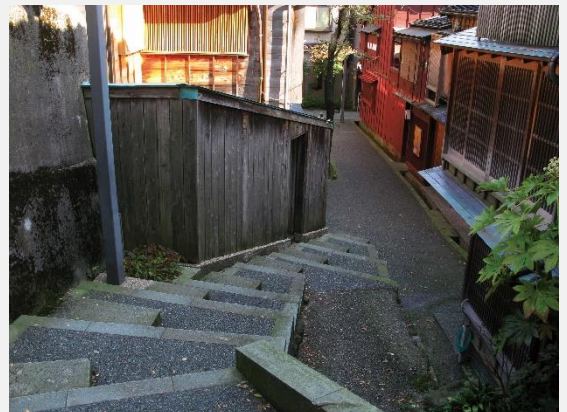
## More to Explore



5 minutes

## Kazuemachi Chaya District [主計町茶屋街]

Across Asanogawa river from famous Higashi Chaya District, there is another geisha district with labyrinthine streets and traditional buildings. Kazuemachi is filled with traditional buildings on narrow streets. The majority of businesses here are *geiko* teahouses, accepting clients by referral, but the path along the riverbank has a few restaurants and cafes that are open to the public.





## Day 3

8:10 Depart Kanazawa Sta.by express train



30 minutes

8:40 Arrive at Kaga Onsen Sta.



75 minutes or



12 minutes

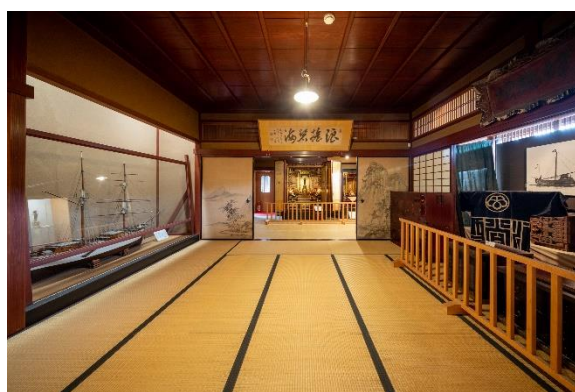
Kanazawa  
Kaga onsen



9

### 10:15 Kitamaebune Ship Museum [北前船の里資料館]

From the 17th to the 19th century, Hashitate was said to be “the richest village in Japan” because many merchant ship (kitamaebune) owners in Hashitate made fortune on the shipping route connecting Hokkaido to Osaka. The museum is set in the grand home of a wealthy shipowner, built in 1878.



15 minutes

10

### 11:00 Hashitate Fishing Port [橋立漁港]

A great variety of seafood is unloaded at picturesque Hashitate Fishing Port throughout the year, attracting masses of tourists seeking a culinary experience hardly available elsewhere. Any time of the year, many restaurants and shops in the vicinity offer the freshest seasonal seafood on their stalls and tables.



(Lunch: Hashitate)

11

## 13:00 Amagozen Cape [尼御前岬]

Amagozen Cape is a natural viewpoint with scenic vistas over the Sea of Japan. Nearby, there is the Amagozen expressway service area where you will find restaurants, souvenir shops, and a café with a nice panoramic view of the harbor and the sea. Walking trails traverse seaside cliffs that have been eroded by wind and waves.



30 minutes + 30 minutes

12

## 15:00 Arrive at Kaga Onsen [加賀温泉郷]

Kaga Onsen is a collection of four unique hot-spring villages: Yamashiro, Yamanaka, Katayamaz, and Awazu. Each has accommodation options ranging from modest, family-run inns to luxurious ryokan.



Stay in Kaga Onsen Resorts



13

**9:00 Kakusenkei Gorge** [鶴仙溪]

Kakusenkei Gorge runs through lush forest near the hot-spring village of Yamanaka Onsen. The waterside trail runs parallel to the river stretches for 1.3 km. Enjoy a leisurely stroll while appreciating the beauty of the waterfalls and the unique rock formations accentuating the deep blue pools of water.



5 minutes

14

**10:30 Yuge-kaido Street (shopping, traditional craft workshop)** [ゆげ街道（ショッピング、伝統工芸体験）]

Yuge-kaido is the town's main street where locally crafted pieces can be found in many of the historic shops. Some shops offer visitors traditional craft workshop. Try your hand at Kutani-yaki porcelain and Yamanaka lacquerware, famous for expert lathework.



(Lunch: Yamanaka)

OR

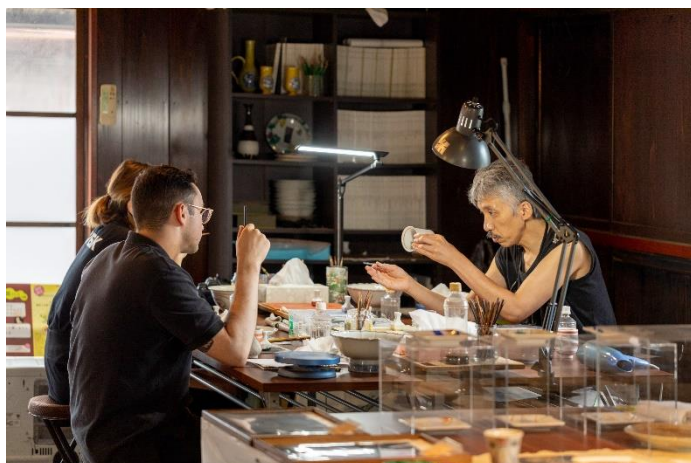
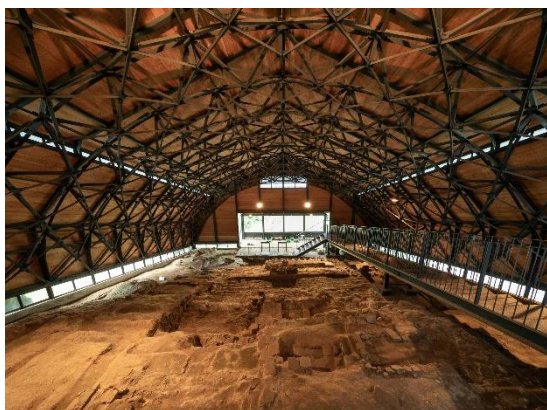


15

## 10:00 Kutani-yaki Kiln Exhibition Hall

[九谷焼窯跡展示館]

The Kutani-yaki Kiln Exhibition Hall houses a museum and an 1824 porcelain kiln that was critical in reviving the art of Kutani ware. Kutani ware is Ishikawa's local style of porcelain, characterized by bold, elaborate designs and striking colors. Visitors can learn about the process in workshops for painting your own porcelain piece.



(Lunch: Yamashiro)



 20 minutes + 30 minutes

16

## 13:20 Natadera Temple [那谷寺]

The natural rock formations at Natadera Temple have been revered as a sacred place for well over 2,000 years and tower above the temple's mossy forests, traditional-style gardens, and carp-filled ponds, earning Natadera a star in the Michelin Green Guide.



## More to Explore



12 minutes

### Hiyo Koke no Sato Moss Garden [日用苔の里]

Rural village carpeted by carefully maintained, vibrantly green moss

Hiyo is a rural village in a mountainous part of eastern Ishikawa Prefecture. The entire village rests on a giant, verdant moss garden that has been cultivated for generations. The tall cedars that tower over this village of moss make for a mystic stroll through the woods in sunny or rainy weather. The piles of kindling and leaves that residents used for fuel in the past massively accelerated moss growth in the deciduous forest setting. Locals continued to tend to the moss, creating the spectacular green carpet that exists today.



ITINERARY

11 days & 10 nights

Day	Activities	Stay
Day 1	<b>Tokyo</b> Arrive at Tokyo Airport	Tokyo
Day 2	<b>Tokyo</b> Visit Asakusa Kannon Temple, Tokyo National Museum, the Imperial East Garden and Meiji Shrine	Tokyo
Day 3	<b>Full day excursion to Fuji-Hankone-Izu National Park</b>	Tokyo
Day 4	<b>Kanazawa</b> Depart by shinkansen (bullet train) to Kanazawa. Visit Nagamachi Samurai District, 21 <sup>st</sup> Century Museum of Contemporary Art, Kanazawa and D.T. Suzuki Museum.	<b>Kanazawa</b>
Day 5	<b>Kanazawa</b> Visit Omicho Market, Kanazawa Castle Park, Kenrokuen Garden, Higashi Chaya District. Join Japanese cooking class.	<b>Kanazawa</b>
Day 6	<b>Kaga</b> Depart by express train to Kaga. Visit Kitamaebune Ship Museum, Hashitate Fishing Port, Amagozen Cape.	<b>Kaga Onsen Resort</b>
Day 7	<b>Kaga</b> Visit Kakusenkei Gorge, Yuge-kaido Street, Natadera Temple. Travel by express train to Kyoto.	Kyoto
Day 8-9	<b>Kyoto</b> Visit Nijo Castle, Nishiki Market, Kiyomizu Temple, Kinkakuji Temple (Golden Pavillion) and Ryoanji Temple.	Kyoto
Day 10	<b>Full day excursion to Hiroshima</b>	
Day 11	<b>Transfer to Osaka Airport and board a flight back home</b>	

