

9:00 Depart Kanazawa

 1 hour

Kanazawa

Kaga

1

10:00 Natadera Temple [那谷寺]

The huge temple grounds feature dramatic cliffs towering above the mossy forests and serene gardens.


 10 minutes

2

11:00 Hiyo Koke no Sato Moss Garden [日用苔の里]

The village rests on a giant, verdant moss garden that has been cultivated for generations.


 20 minutes

(Lunch: Yamashiro Onsen)

3

13:00 Kutaniyaki Kiln Exhibition Hall [九谷焼窯跡展示館]

The exhibitions housing a museum and an 1824 porcelain kiln that was critical in reviving the art of Kutani ware.



 5 minutes

4

14:00 Iroha Souan [いろは草庵]

A historic cottage where artist Rosanjin (1883–1959) briefly stayed in 1915. Rosanjin

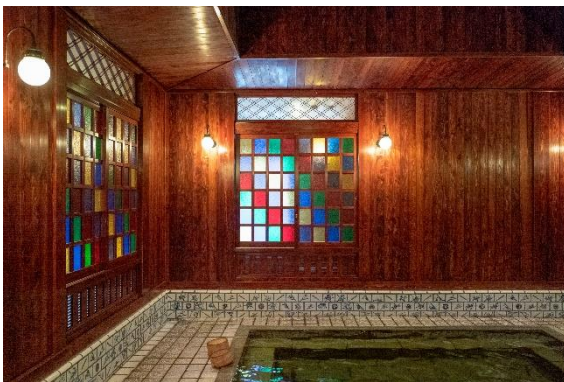


 3 minutes

5

14:30 Ko-Soyu bathhouse [山代温泉古総湯]

The Ko-Soyu bathhouse recreates the architecture and bathhouse culture of hundreds of years ago. It has one bath each for men and women, decorated with local Kutani porcelain tile.



 1 hour

15:30 Back to Kanazawa and return the car

[View on Google Map](#)