

# MINDSPRINT

Intelligence. Engineered.

Brochure

## FARMSPRINT

Digitize plantation operations. Improve field productivity.  
Make every hectare more accountable.

Farmsprint is Mindsprint's precision farm management platform for plantation and farm operations. It connects workers, supervisors and estate managers through a mobile-first operating layer for attendance, activity execution, incident management, traceability and field analytics.

Mobile-first field execution

Data-backed plantation control

Traceability + ESG readiness

PLANTATION OPERATIONS | PRECISION AGRICULTURE | FIELD EXECUTION

### WHY BUYERS CARE

10%+

Manpower  
cost savings

20%+

Estate manager  
productivity gains

80K+

Plantations  
managed monthly

12K+

Users enabled across  
4 crops in 3 countries



## Why Farmsprint, why now

Agriculture and plantation businesses are under pressure to become more productive, more resilient and more transparent at the same time. Digital agriculture is increasingly the operating backbone for that shift.

Market forces shaping farm operations	What breaks in most plantations today
<ul style="list-style-type: none"> <li>• Pressure to raise output while controlling labor, water and input costs.</li> <li>• Need for better resilience, climate-smart practices and consistent field execution.</li> <li>• Higher expectations for traceability, worker safety and sustainability reporting.</li> <li>• Management teams need reliable operational data instead of fragmented manual records.</li> </ul>	<ul style="list-style-type: none"> <li>• Activity execution is hard to standardize across workers, supervisors and estates.</li> <li>• Farm inputs and field actions are captured late, inconsistently or not at all.</li> <li>• Quality and yield are difficult to map back to the exact actions taken on the ground.</li> <li>• Supervisors lose time coordinating attendance, incidents, harvest and remediation manually.</li> </ul>

Farmsprint gives operations leaders one system of execution: who worked, what was done, where it happened, what inputs were used, what issues were reported, and what the field outcome looked like.

Industry context referenced from FAO Digital Agriculture and AI, FAO Climate-Smart Agriculture, and World Bank Data-Driven Digital Agriculture.

## What Farmsprint does

A one-stop operating platform for plantation execution, worker accountability and precision-led farm management.



### Designed for 3 user roles

**Plantation workers:** Capture attendance, tasks, incidents, field activities and notes from the mobile app.

**Supervisors:** Allocate work, monitor teams, track execution quality and respond to exceptions quickly.

**Estate managers:** View performance dashboards, trace operations across estates and drive data-backed decisions.

#### 1. Data capture from the field

Irrigation, fertilization, harvest, pests and diseases are captured directly on mobile devices.

#### 2. Employee tracking

Biometric registration and attendance with GPS trail capture improve accountability and confidence in field data.

#### 3. Incident management and activity scheduling

Report unusual activities, weather, pests and disease incidents, then schedule and track remediation.

#### 4. Traceability and precision agriculture

Track fertilizer use and harvested products from field to collection point, while connecting crop health to scientific analysis.

## Digitizing daily plantation operations

Farmsprint is built for the real rhythm of field operations, not as a static reporting layer added after the fact.

Execution area	What gets digitized	Business value
<b>Workforce control</b>	E-attendance, attendance lists, bulk role upload, supervisor visibility	Improves workforce accountability and helps managers plan labor with confidence.
<b>Crop and field operations</b>	Irrigation, fertilization, upkeep, tapping standards, harvest assignments, harvest collection	Creates a reliable operational history for every estate and crop block.
<b>Risk and incident response</b>	Pest and disease remediation, unusual events, safety incidents, quick notes	Reduces response time and closes the loop on exceptions.
<b>Operational intelligence</b>	Dashboards, yield records, trend analysis, reports by role or location	Enables faster decisions and more precise interventions.

**Net effect:** A supervisor no longer manages by phone calls, paper logs and fragmented spreadsheets. They manage from live field execution data.

## How Farmsprint creates value

The platform is designed to improve control, productivity and traceability simultaneously - not one at the expense of the others.

<p><b>Improved incident and pest / disease management</b></p> <p>Issues are logged faster, escalated sooner and resolved with clearer ownership.</p>	<p><b>Enhanced input and product tracking</b></p> <p>Supports tighter control of fertilizer use, harvested output and potential losses from theft or damage.</p>
<p><b>Improved worker productivity</b></p> <p>Attendance, task allocation and field reporting become more structured and less dependent on manual follow-up.</p>	<p><b>ESG-aligned operations</b></p> <p>Supports worker safety, better water stewardship and cleaner evidence for sustainability programs.</p>

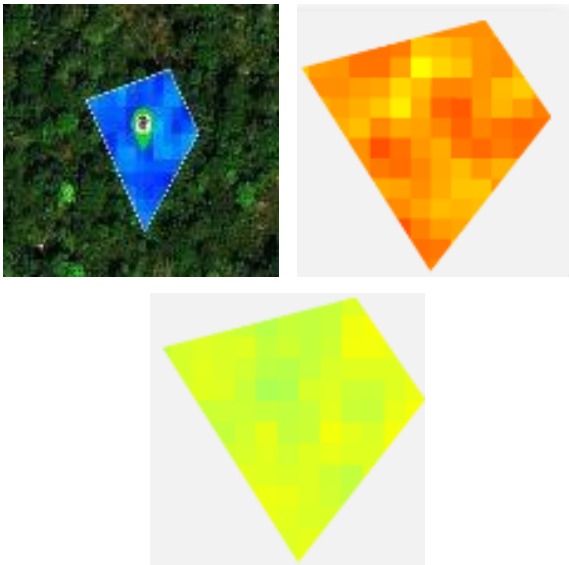
## From fragmented field control to one operating system

Typical current state	With Farmsprint
Attendance and tasks managed manually	Biometric, GPS-backed workforce visibility
Limited visibility into field actions	Mobile capture of activities as they happen
Difficult to link inputs to outcomes	Operational history that supports precision analysis
Slow reaction to incidents	Structured incident reporting and remediation workflows

## Precision agriculture extensions

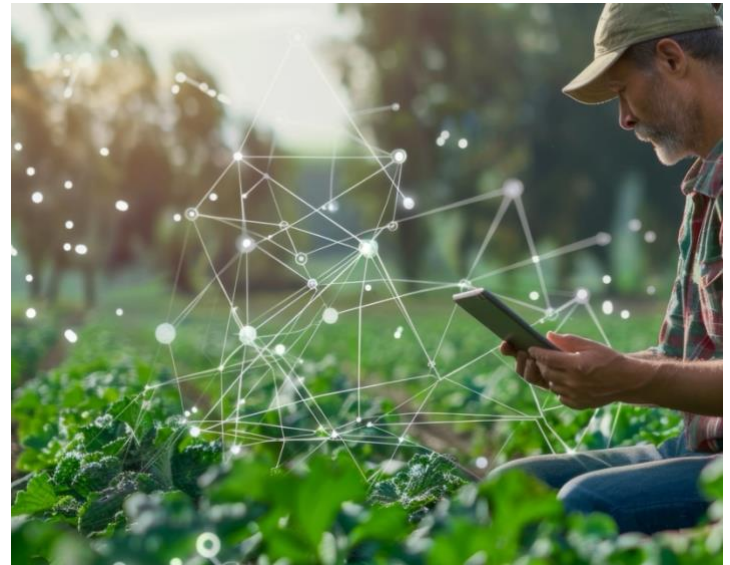
Farmsprint becomes even more powerful when field execution data is paired with image analytics and remote sensing capabilities from Mindsprint's broader agri stack.

### Drone image analytics for plantation monitoring



Use cases include tree detection and counting, health evaluation, vegetation growth assessment and compliance monitoring. **In the referenced case, the solution covered ~65K hectares, processed 1.2+ TB of data and delivered 90%+ accuracy in identifying green and non-green palms.**

### Satellite-driven crop health monitoring



Remote sensing indices such as NDWI, NDVI and EVI help teams identify moisture stress, vegetation health and burn-affected areas. **The case referenced in the deck reports 10%+ yield improvement, 5%+ irrigation savings, 4K+ hectares covered and 50+ remote sensing calculations.**

This is the strategic advantage of Farmsprint: Not just digitized activity capture, but a path to precision-led intervention and measurable agronomic improvement.

## Proof at scale

The Farmsprint case in the deck demonstrates both operational fit and scaling potential across multi-country plantation environments.

### Case study snapshot

Partnered with an agri company for digital transformation of plantation operations across 4 crops in 3 countries.

Implemented 2 inter-linked applications: mobile for field data capture and web for role-based oversight, bulk uploads and reporting.

The deck positions Farmsprint as a platform that improves incident management, product and input tracking, worker productivity and data-backed decision-making.

**12K+**

Users

**80K+**

Plantations  
managed monthly

**10%+**

Manpower cost  
savings

**20%+**

Productivity gain  
for estate manager

## Implementation approach that reduces adoption risk

### 1. Conceptualize

Field visits and stakeholder discussions identify the operational touchpoints that matter most.

### 2. Implement

Mobile app, portal, sensors and biometric devices are integrated into one working solution.

### 3. Train

Workers, supervisors and estate managers are coached on data capture and action-taking.

### 4. Scale & improve

Capabilities are customized, extended across the value chain and rolled out to more farms and geographies.

## Why Mindsprint

Farmsprint is stronger because it sits inside a broader farm-to-fork transformation portfolio – not as an isolated app, but as part of a connected operating vision.

### Deep agri domain grounding

The deck positions Mindsprint as a technology and solutions partner with 20+ years of experience building for a large global food and agri major, with offerings spanning farm management, procurement, traceability, sustainability, logistics, factory digitization and trading.

### AI-first and data-led

Farmsprint can connect with image analytics, remote sensing, dashboards and broader digital capabilities to move from reporting to optimization.

### Scalable commercial reality

The overall GTM approach emphasizes advisory-led transformation, rapid pilots, co-innovation and flexible commercial models.

### A stronger deal story

For buyers, this means they are not purchasing only a field app. They are investing in an expandable digital foundation for productivity, traceability and resilience.

**Farmsprint helps plantation businesses shift from manual coordination to measurable control.**

Better field execution. Better visibility. Better yield and sustainability outcomes.

Primary source: Mindsprint Agri Offerings deck (Farmsprint sections, Feb 2026). External context references used sparingly for positioning: FAO Digital Agriculture and AI, FAO Climate-Smart Agriculture, and World Bank Data-Driven Digital Agriculture.



Mindsprint reimagines business through talent, technology, and insight-driven solutions.

With a proven track record spanning two decades, the company has enabled digital transformation for clients in over 60 countries, spanning diverse industries such as retail, agriculture, manufacturing, healthcare and life sciences.

Mindsprint offers a differentiated suite of services, including enterprise technology applications, business process services, and cybersecurity solutions.

Mindsprint is headquartered in Singapore, with a strong global presence across the US, UK, Middle East, India, Australia and Africa.

## GET IN TOUCH

### For More Information

Visit our website at <https://www.mindsprint.com>

### Request a Demo

Reach out to us at [connect@mindsprint.com](mailto:connect@mindsprint.com)

### Follow Mindsprint for insights & updates

