



FACTORBIKES.COM

HANZŌ



Hanzo Manual

INTRODUCTION

Congratulations on the purchase of your FACTOR product. Please review thoroughly the following instructions and only follow them for correct operation and use. Should you fail to follow the following instructions and warnings, this could result in damage of the product, damage to the bicycle and in severe situations cause possible injury and or death.

Since specific tools and bicycle service experience is required for proper assembly

LIMITED LIFETIME WARRANTY ON BICYCLES AND FRAMESETS

Subject to the following limitations, terms and conditions, Factor warrants to the original owner for the lifetime of the original owner of each new Factor bicycle or frameset that the bicycle frame or frameset is free of defective materials and workmanship.

The lifetime limited warranty is conditioned upon the bicycle being operated under normal conditions and use, and properly maintained in accordance with the owner's handbook (as supplied with the Factor bicycle).

This lifetime limited warranty does not apply to paint/finish, any Factor components considered subject to normal wear and tear or any third-party components attached to the bicycle or frameset, such as wheels, drive train, brakes, or any suspension related parts or components.

Any Factor components considered subject to normal wear and tear are covered under a limited one (1) year warranty. The duration of this limited warranty shall be one (1) year, commencing from the date the customer takes possession of the bicycle.

Factor components considered subject to normal wear and tear will be listed in the Technical Supplement and/or User Manual provided with the bicycle. Any and all third party components included with or installed on Factor bicycles are subject to any manufacturers' guarantee applicable to those components, as specified by the manufacturer.

Additional Conditions: This lifetime limited warranty is made solely to the original owner of this new Factor bicycle or frameset, and shall remain in force only as long as the original owner

installation, it is recommended that the product be assembled by a qualified bicycle mechanic. FACTOR BIKES assumes no responsibility for damages or injury due to improper assembly and installation of the product(s).

To qualify for FACTOR'S LIMITED LIFETIME WARRANTY please visit www.factorbikes.com and register your product(s) within 15-days of purchase.

retains ownership of the Factor bicycle. This lifetime limited warranty is not transferable.

If the bicycle is purchased as a gift, the original recipient of the gift is considered to be the original owner for the purposes of this lifetime limited warranty.

In order to exercise your rights under this lifetime limited warranty, the bicycle or frameset must be presented to Factor or an authorized Factor dealer, together with a receipt, bill of sale, or other appropriate written proof of purchase which identifies the bicycle or frameset by serial number.

Exclusions & Limitations:

The above warranty, or any implied warranty, does not cover:

Modifications from the original condition except such modifications which are necessary to comply with specific national legislative requirements that may apply in the country of use.

Normal wear and tear.

Use of the bicycle for abnormal and/or commercial activities, or for purposes other than those for which the bicycle was designed. Damage caused by failure to follow the instruction manual.

Paint finish and decal damage resulting from normal wear and tear, taking part in competition,

jumping, downhill and/or training for any such events or as a result of exposing the bicycle to, or riding the bicycle in, severe conditions or climates.

Labour and/or transport charges for full or part replacement, repair, return or changeover.

Accident, neglect, improper handling, abuse or wilful damage, misuse, improper assembly and use of devices or components not originally intended for, or not compatible with the bicycle.

Any alteration or repair by you or a third party who is not one of our authorised repairers.

Any specification provided by you. Remedy: Unless otherwise provided, the sole remedy under the above Factor warranty, or any implied warranty, is limited to repair or replacement of defective parts with those of equal or greater value at the sole discretion of Factor.

Except for this remedy Factor will not be responsible for any direct, incidental or consequential loss or damages, including, without limitation, loss or damages for personal injury, property damage or economic losses, whether based on contract, warranty, negligence, product liability or any other theory.

Nothing in this limited warranty will exclude or limit Factor's liability for death or personal injury caused by Factor's negligence or any other liability which cannot be excluded or limited by law. Unless you are a consumer, Factor makes no other warranties, express or implied and all implied warranties, including warranties of merchantability, reasonable care, and fitness for a particular purpose are hereby disclaimed.

Miscellaneous:

In the event that Factor prevails in any court action, you agree to reimburse Factor for the expenses, including attorney's fees and expenses of litigation incurred by Factor in defending against your claim.

Claims made outside the country of purchase may be subject to additional fees and restrictions.

Warranty detail and duration may differ by country. This warranty gives you specific legal rights, and you may also have other rights which may vary from place to place. This warranty does not affect your statutory rights.

To the extent that this warranty statement is inconsistent with local law, this warranty shall be deemed modified to be consistent with such law; under such law, certain disclaimers and limitations may apply to the customer.

Some states and countries do not allow the exclusion or limitation of incidental or consequential damages or warranties, so the above limitations or exclusions may not apply to you.

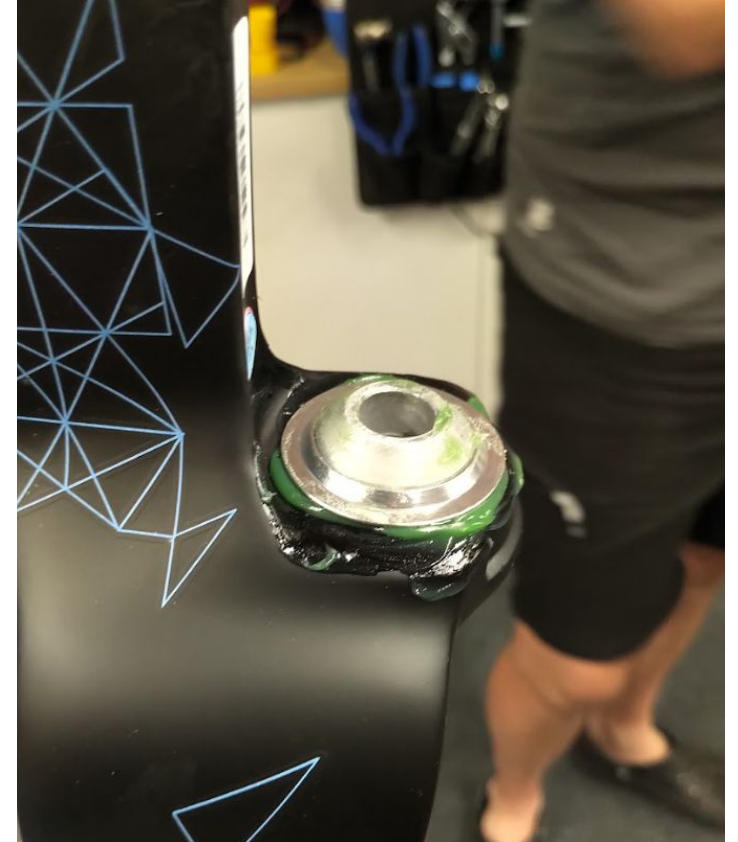
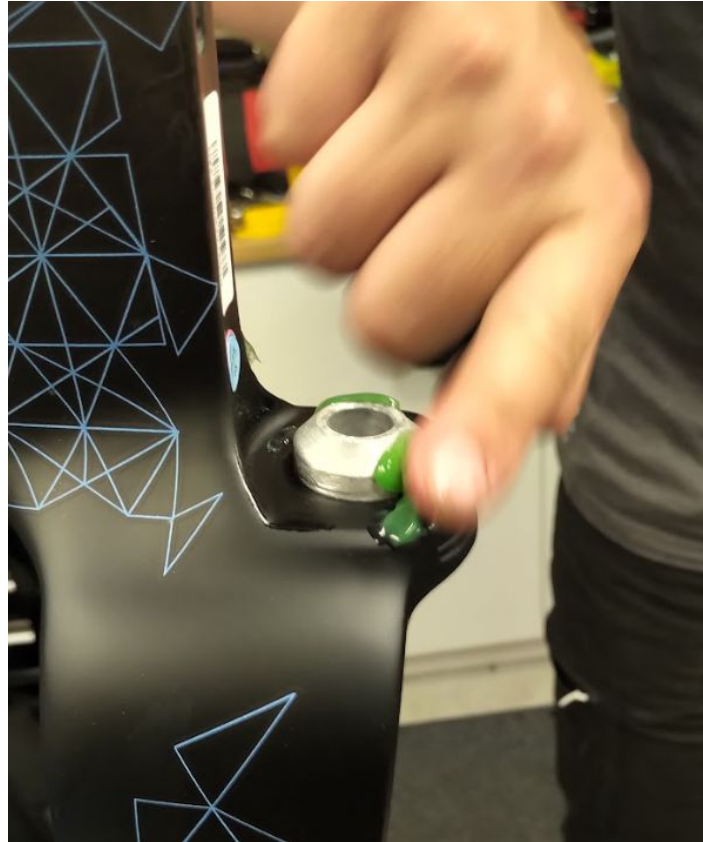
If it is determined by a court of competent jurisdiction that a certain provision of this limited warranty does not apply, such determination shall not affect any other provision of this limited warranty, and all other provisions shall remain in effect.

The English language version of this limited warranty will prevail.

This limited warranty is governed by the laws of European Union and United States and the courts of European Union and United States shall have the non-exclusive jurisdiction to settle any dispute or claim arising out of or in connection to this limited warranty or its subject matter or formation (including non-contractual disputes or claims).

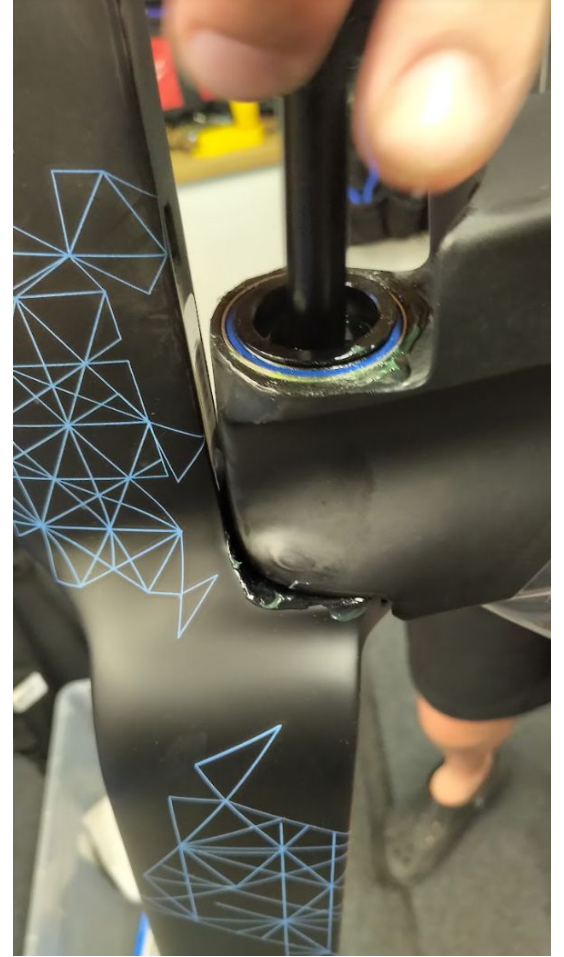
Fork Installation

- Your Hanzo frame uses 1" upper and lower bearings combined with a tension rod that threads into the fork, retaining the bearings.
- You must first install the tapered ring onto the fork, be sure to grease both surfaces
- This must be press fit on to the fork, do not cut the tapered ring



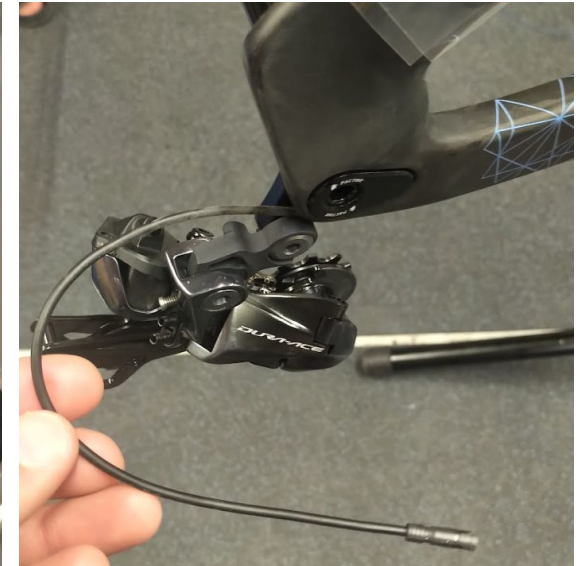
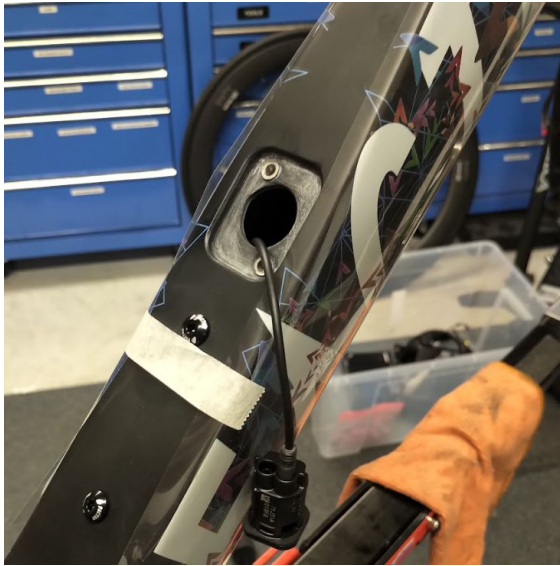
Fork Installation

- Grease and install the top and bottom bearings
- Please the split ring into the top bearing, again greasing generously
- Grease and Insert the tension rod and tighten down until slightly more than where the fork can freely turn (over tightening somewhat)



Di2 Wire Frame routing

- At this point its easiest to wire the frame prior to installing any other components
- Route the Di2 wires per normal, with the SP battery wire being left loose
- Discuss your particular arrangement of accessories and wiring with your mechanic, you may want to use a 2nd JC41 in the BB as shown or other arrangements depending on your available parts and specific setup



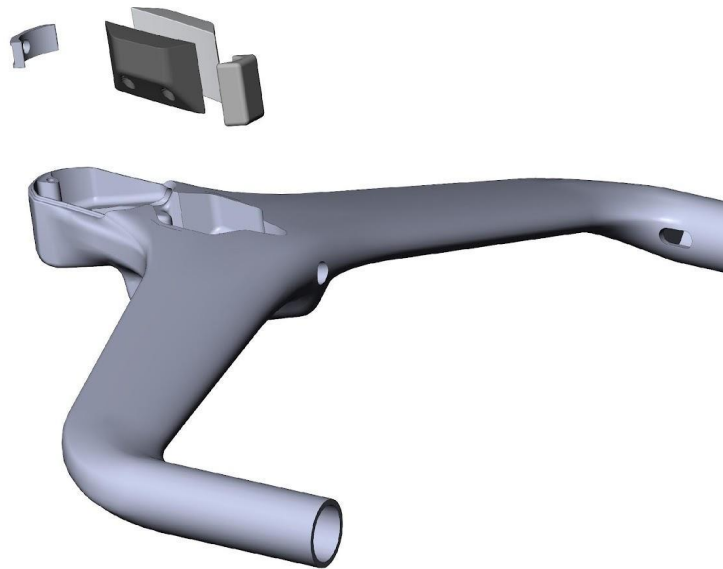
Seat Post Installation

- Minimum seat post insertion depth is **80mm**
- Install Di2 Battery using the supplied rubber bung at this point, connect it to the seattube Di2 wire
- Slide the rubber SP gasket over the post
- Insert the GF reinforced SP clamp into the frame, using carbon paste to hold it in position
- Generously apply carbon assembly compound to the seat post and insert into the frame
- Tighten the Seatpost clamp to **6Nm (8Nm max)**



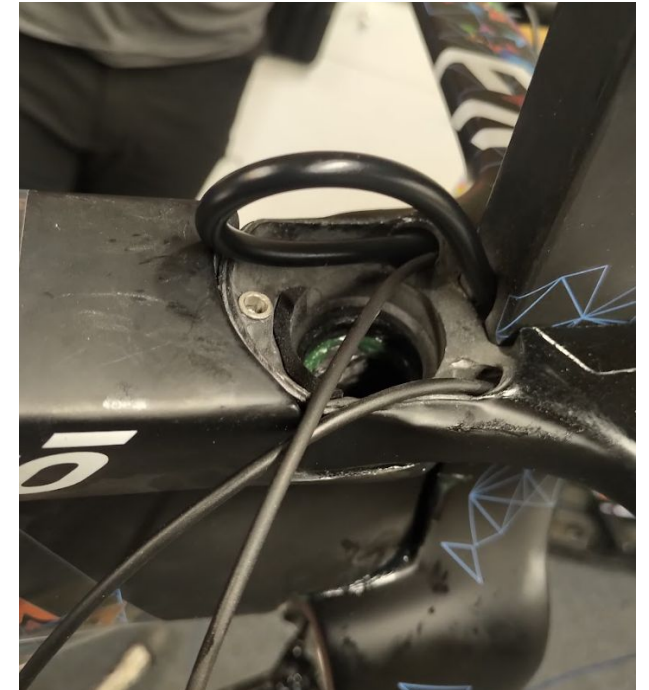
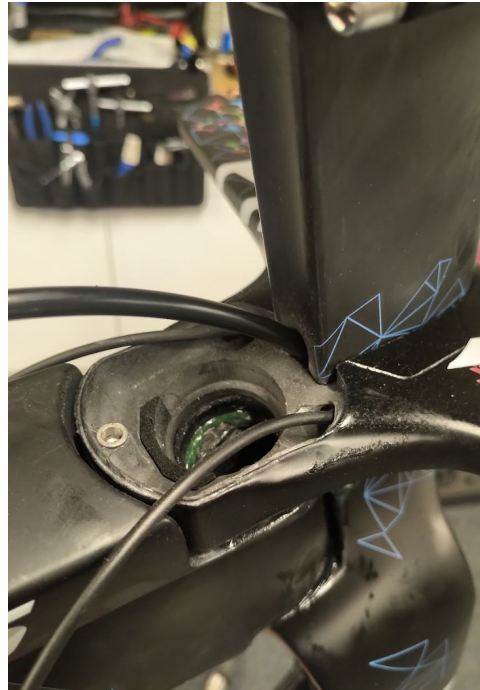
Basebar Installation

- Note; you may find it simpler to route the basebar first prior to installing it, if so, proceed to the next page
- Prepare the basebar wedges by applying assembly compound to the wedges, and grease to the fasteners.
- There are three wedges for basebar retention and one steering lock.
- Generously apply assembly compound to the basebar and gently slide it over the fork mast and upper part of the tension rod
- Tighten the mast wedges (2x) To **8Nm (5Nm)**
- Tighten the front clamp to **6Nm (5Nm)**
- Tighten the two barrel nuts retaining the tension rod to **6Nm (5Nm)** by rotating the bar left to right to access the fasteners



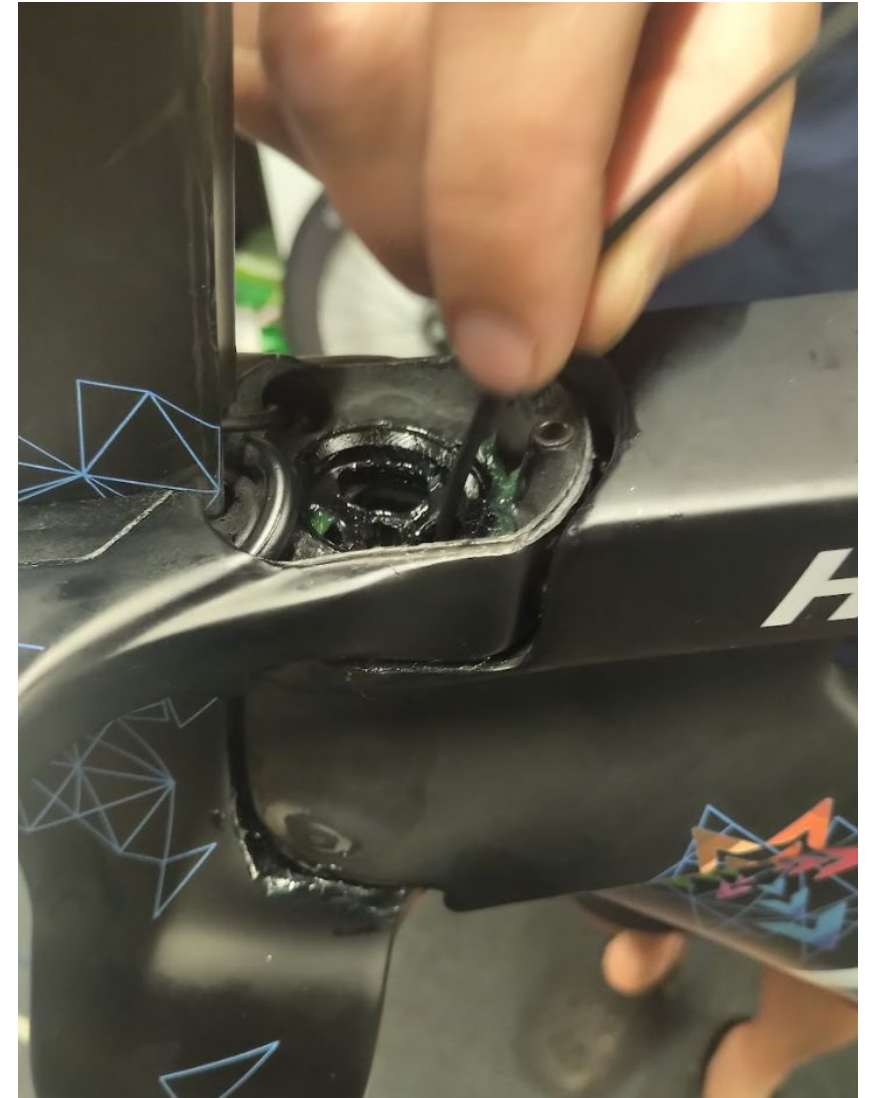
Basebar Routing

- Consult with your mechanic about non-typical Di2 wiring such as sprint shifters etc, you may require more than one wire per bar end
- Pull your Di2 wires through to the center section of the bar prior to routing hydraulic hoses
- It is typically simpler to pull through your hydro hoses through the stem/Basebar, then extend them through to the bar ends
- Loop the hydro hoses back from the center of the basebar/fork interface, using a great deal of caution to not kink them. This loop is very important and a great deal of care must be taken with this. Once the loop has been made, gently press it down into the vacant space in the basebar, to be covered later in the assembly process



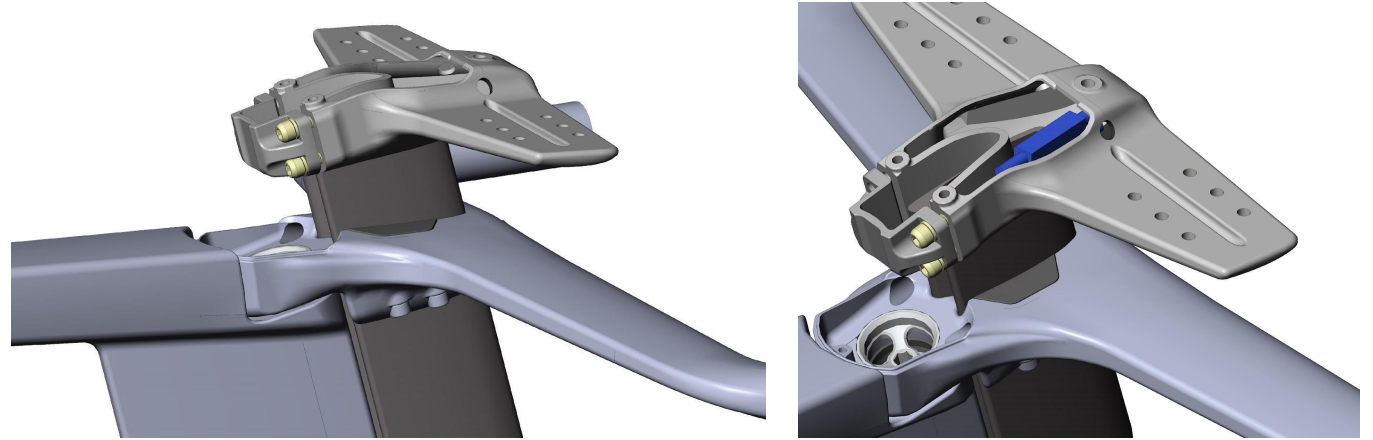
Basebar Routing

- At this point you're likely to find it easiest to pull the Di2 wire and rear hydro hose up through the frame using an internal routing kit
- Note: At this point the ability to add preload will be reduced with the hose and wire passing through the tension rod limiting its ability to spin. Its recommended that you "shake out" the frame at this point by adding a front and rear wheel and applying force to the bar ends and preloading the wheels and headset. Final tightening/adjustment should happen after this
- Again exercise caution with the radius of the rear brake tube as you bring it from the frame into basebar vacant volume and put it through the basebar to the shifter.



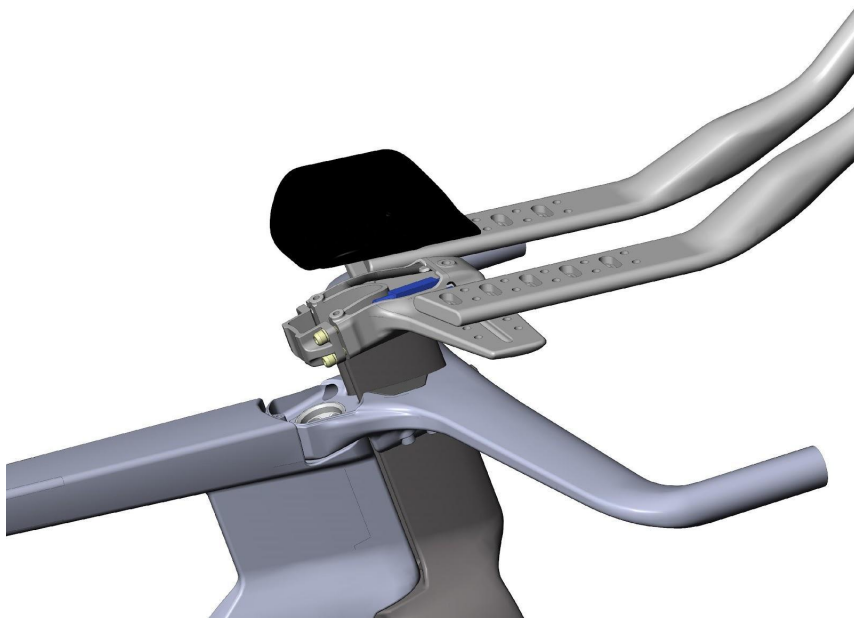
Universal Extension mount Installation

- Apply Grease to all fasteners and attach the rear clamp to the adapter
- You may find it easy to pull the Di2 wires up through the mono-riser from the brake levers (Y cable) and the frame (coming from the charging point) at this point
- Depending on your configuration at the extensions you may want to place a JC 41 in the mast, or optionally it can also fit in the universal adapter



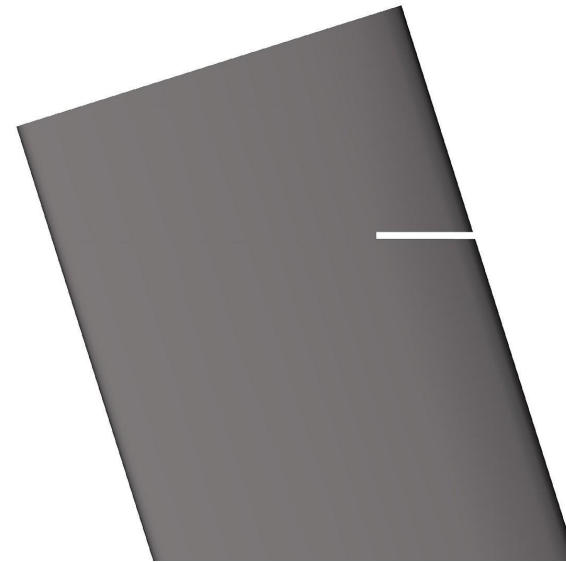
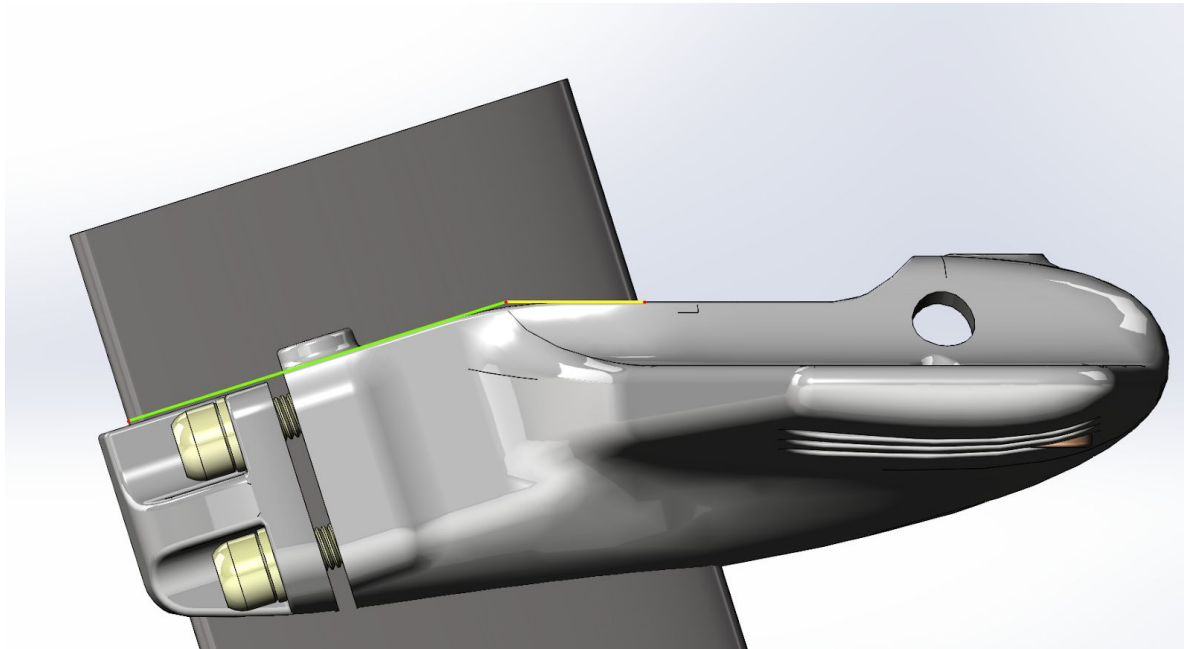
TT extension installation

- The extensions can be trimmed to fit at either end, make sure to chamfer the ends of the bolting section if you cut them as there will be exposed aluminum. The round end of the extensions have been reamed to a 7cm depth, if you choose to cut these very short you may need to gently round file the inside of the extension to suit the outside diameter of your shifter.
- Bolt the extensions to the base bar by passing the M5 bolts into the connection point under the bar
- Ensure assembly compound is applied between all mating parts in this area
- Extension to adapter torque is **8Nm (6Nm max)**
- Pad to Bar Torque is **4Nm**



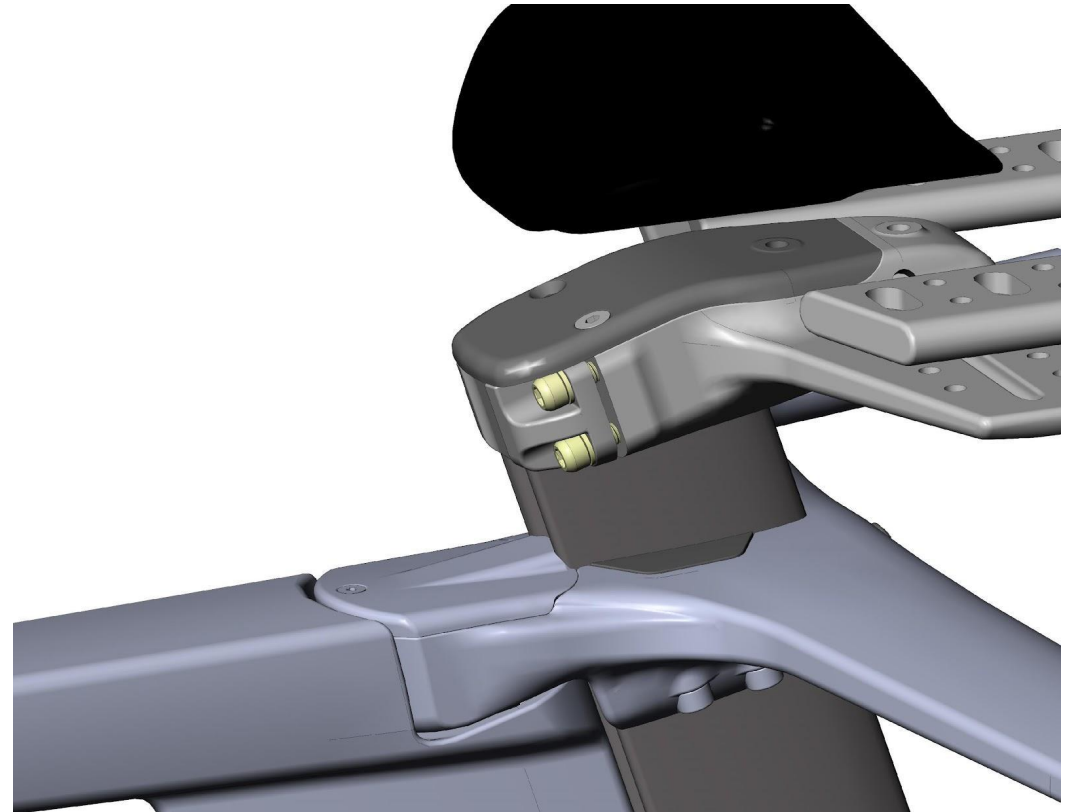
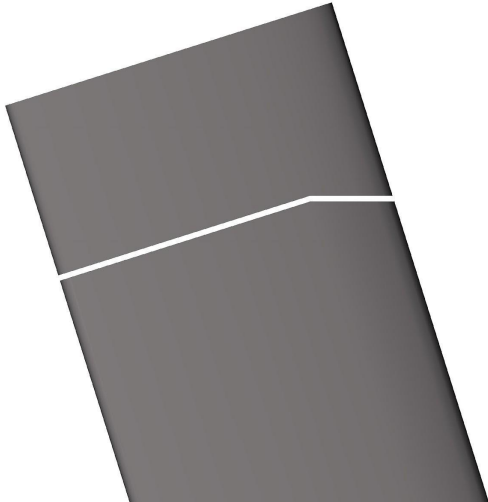
Mono Riser cutting

- Once your final fit has been determined, the mono riser should be cut to allow the extension mount cap to be installed.
- Proceed by finding your ideal pad stack, then loosening and lowering the extension mount **~3mm** below that height.
- Mark the height as shown at right with a thin indication along the two axis' indicated in green and yellow at right. If desired you can remove the extension mount and wrap the steerer in masking tape to mark and later along
- The first cut will be normal to the airflow direction and great care needs to be taken to ensure this is done straight
- Remove the extension mount
- Using a sharp fine hacksaw blade, carefully make the first cut, stopping where your two lines intersect



Mono Riser cutting

- The 2nd mono riser cut should be done perpendicular to the steerer axis, and is best done using a Park Tool SG 7.2 saw guide where possible
- The edges should be lightly filed for a smooth chamfer
- Reinstall your universal adapter just above the cut line, allowing the Di2 wire to enter the mono riser
- Install the top plate/cover for the universal adapter, at this point you can also install the cover on the basebar.
- All bolts should be lightly greased
- Universal Adapter Torque: **3Nm (4Nm)**
- Basebar cover Torque: **1Nm (hand-tight)**



Di2 Junction install

- Install either the Di2 charging junction in the downtube, or the supplied blanking plate as appropriate
- All bolts should be lightly greased
- When installing water bottle cages be aware that this frame is designed to use a single bottle at a time, with the bottle mounted low on the Downtube or the seat tube. Speak to your performance consultant about which location will give better performance with your specific hydration arrangement
- Di2 Junction Torque: **1Nm (hand-tight)**
- Water bottle Torque: **3Nm (2Nm)**



FDM Install

- Install either the supplied Front Derailleur Mount or Blanking plate for 1x setups
- Appropriate grommets can be installed at this time for Di2/Sram routing
- Lightly grease bolts
- Torque the FDM bolts to **3Nm**

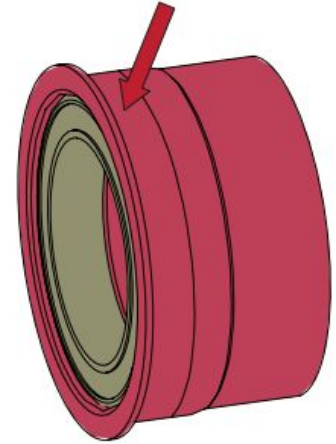


BB Install

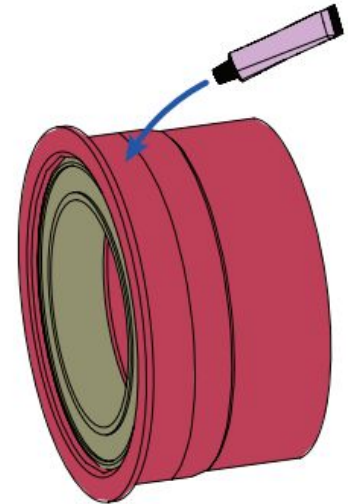
- Your Hanzo frame is compatible with the PF BBCorrect standard, which is a modified Bbright arrangement.
- Loctite 641 should be used when installing the BB, as should high quality PF Bottom Bracket install tools



Clean the inside of the frame bottom bracket & the bottom bracket cups with an isopropyl alcohol.



Apply Loctite 641 on the grooves of the both bottom bracket cups.



RDH Install

- Your Hanzo frame is equipped with Factor's floating RDH
- Install the axle with the wheel reversed prior to tightening the RDH fixing screw, this will align the DS and NDS dropouts and the Thru Axle itself.
- Grease all threads and the Axle itself





FACTORBIKES.COM