

HEART EYES, IRL

VELVET VISION | GEL COLOR

Complete GEL COLOR
Nail Prep Step by Steps

BEFORE
YOU
BEGIN

PRO TIP

When applying VELVET VISION, cap the free edge first to avoid interrupting how the magnetic pigments lay.



PRODUCTS USED

- OPI GEL COLOR Stay Classic or Stay Strong Base Coat
- OPI GEL COLOR Platinum Eclipse
- OPI GEL COLOR Teal Trance
- Magnet
- OPI GEL COLOR Stay Shiny Top Coat
- OPI LED Light
- OPI EXPERT TOUCH Nail Wipe
- OPI N.A.S. 99 Cleansing Solution
- OPI PRO SPA Nail & Cuticle Oil
- Fine Liner Brush



STEP BY STEPS

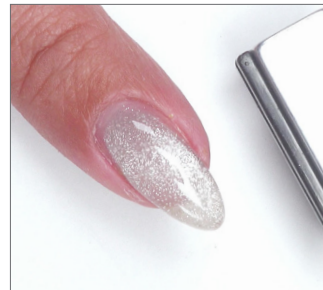
Apply one thin and even coat of OPI GEL COLOR Base Coat of choice, making sure to cap the free edge, and cure for 30 seconds in the OPI LED LIGHT.

1

With Platinum Eclipse, cap the free edge before applying one even coat. Use the magnet to create desired effect and cure for 30 seconds. Repeat for coverage.

PRO TIP

For maximum effect, keep the magnet parallel to the table.



2

Using a fine liner brush and Teal Trance, create two dots next to each other. Do not cure.



3

Connect the dots to a point towards the cuticle to form a heart. Create desired effect using the magnet and cure for 30 seconds. Repeat for coverage.



FINISH

Apply one even coat of OPI GEL COLOR Stay Shiny Top Coat, making sure to cap the free edge, and cure for 30 seconds. Cleanse with OPI EXPERT TOUCH Nail Wipe and OPI N.A.S. 99 Cleansing Solution. Apply OPI PRO SPA Nail & Cuticle Oil and massage in.