

O.P.I. GelColor Intelli-Gel™ System

PRO APPLICATION OVER ENHANCEMENTS



WHAT YOU'LL NEED

OPI Products:
GelColor Super Base Base Coat
GelColor Super Gloss Top Coat

NEW OPI GelColor Shade:
Duomo Days, Isola Nights

OPI Star Light Gel Lamp
N.A.S. 99 Cleansing Solution

Additional Products:
Nail wipes
ProSpa Nail & Cuticle Oil

THE STEPS

BEFORE YOU BEGIN: GelColor can be applied directly over the tacky layer of gel, or a finished sculpting gel or acrylic enhancement filed with a 180 grit file.



1

Shake bottles for 1 minute to thoroughly blend ingredients.



2

Apply a thin coat of Super Base Base Coat to nails, start by capping the free edge of the nail to seal and apply to the surface of the nail leaving a small free margin around the perimeter of the nail. Cure for 30 seconds in an OPI Star Light Gel Lamp.



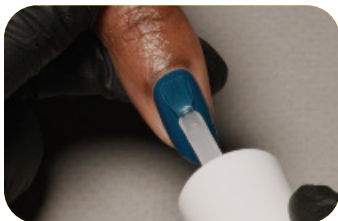
3

Apply a thin coat of color, start by capping the free edge to seal and apply to the surface of the nail leaving a small free margin around the perimeter of the nail. Cure for 30 seconds.



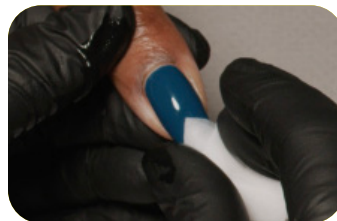
4

Apply a second thin coat of color, start by capping the free edge to seal and apply to the surface of the nail leaving a small free margin around the perimeter of the nail. Cure for 30 seconds.



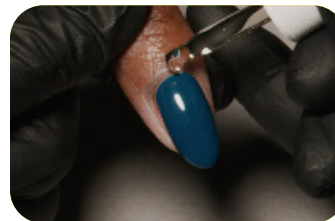
5

Apply a thin coat of Super Gloss Top Coat to nails, start by capping the free edge of the nail to seal and apply to the surface of the nail leaving a small free margin around the perimeter of the nail. Cure for 30 seconds.



6

Cleanse the nails to remove gel residue with a nail wipe saturated with NAS 99 Nail Cleansing Solution.



7

Apply a drop of ProSpa Nail & Cuticle Oil to the base of each nail and massage in.