

O.P.I.

GElevate™

PRO Application
Fill / Rebalance
Step-by-Step



WHAT YOU'LL NEED

GElevate 4-in-1 Builder shade of choice
GelColor Super Gloss Top Coat
Lightning Flash Cure Gel Lamp
OPI Star Light Gel Lamp

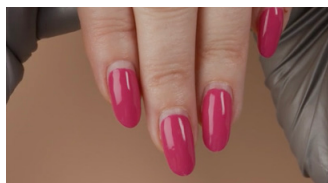
N.A.S. 99 Cleansing Solution
ProSpa Nail & Cuticle Oil
Expert Touch Lint Free Nail Wipes
OPI's Hand Filing or E-Filing Map
Step by Steps

E-file & bits
100-180-grit file
240-grit file
180-grit buffer
Bondex™ Bonding Agent

OPTIONAL:
GelColor Super Base Base Coat

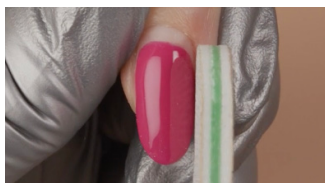
THE STEPS

BEFORE YOU BEGIN: Prep those nails! Follow our OPI Salon Pro prep basics.



PRO TIP

Assess the nails for service breakdown, checking under the extension edge to ensure the nail is securely attached. Check for pocket lifts, perimeter lifting and any visible cracks in the product to determine if a simple or more technical rebalance is needed.



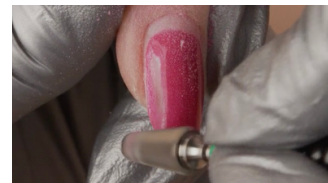
1

File prep the nails. Remove GelColor if needed. Use a 100/180-grit file or an e-file with a coarse bit on medium-high speed to remove the color from the nail. Brush away any dust. Reference OPI's Hand Filing or E-Filing Map step-by-steps for more detailed instructions.



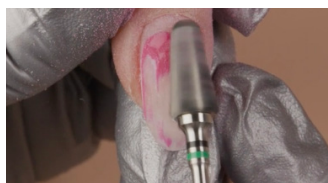
2

If desired, reduce the length of the nail and reshape as desired.



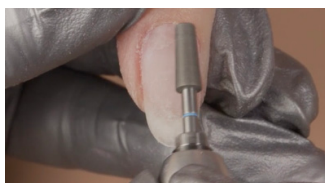
3

Assess the new growth and apex placement to determine amount of product thickness to remove.



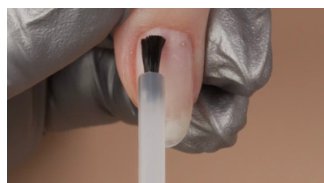
4

Reduce the thickness of the product on the nail following the contour of the nail. Reduce between 30-50% based on nail growth and apex growth.



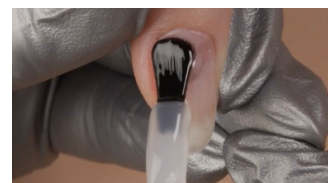
5

Once product has been reduced, perform nail prep to remove cuticle and cleanse the nail. Refer to OPI Salon Prep steps to complete.



6

Apply a coat of Bondex Bonding Agent and allow to dry.



OPTIONAL:
For a HEMA-free and soak-off friendly service, skip Bondex application and apply a thin coat of GelColor Super Base Base Coat to all 5 nails. Cure for 30 seconds in the OPI Star Light.

O.P.I.

GElevate™ PRO Application Fill / Rebalance Step-by-Step

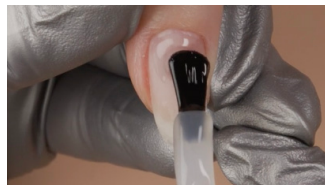


THE STEPS CONTINUED



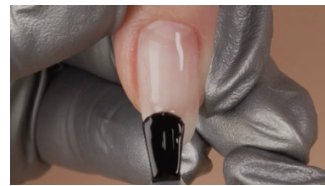
7

Apply a thin coat of GElevate Builder to all 5 nails leaving a thin free margin around the perimeter of the nail. Cure for 30 seconds in the Star Light Lamp.



8

Pick up a small bead of product on one side of the brush. Place the bead in the cuticle area and gently nudge the product towards the cuticle and from side to side leaving a small free margin.



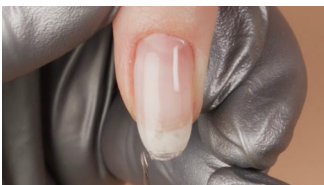
9

Using lighter pressure, guide the gel from side to side while pulling forward to create the apex and leaving a larger free margin at the sides.



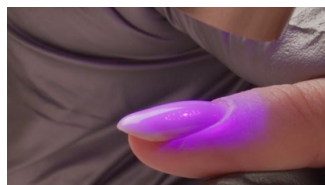
10

Use the corner of the brush to guide the gel down the sidewalls leaving a small free margin.



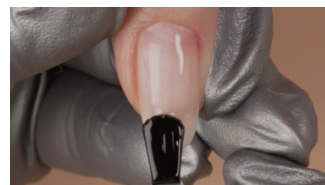
11

Review the structure of the nail and use the corner of the bottle brush to perfect the apex and shape. Flip the nail upside down for 3-5 seconds to allow the apex to smooth. Use detail brush to refine as needed.



12

Flash cure the nail for 5 seconds with the Lightning Flash Cure Gel Lamp.



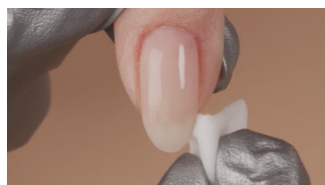
13

Repeat steps 7-12 on remaining nails until builder gel is completely applied to all of the nails on one hand, then cure for 30 seconds in the Starlight Gel Lamp. Repeat on the other hand.



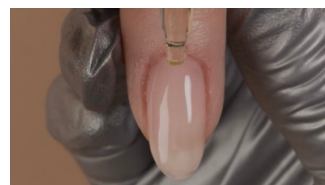
14

Finish nails with your choice of GelColor Shade and Super Gloss Top Coat.



15

Remove gel residue with a nail wipe saturated with N.A.S. 99 Cleansing Solution.



16

Apply a drop of ProSpa Nail & Cuticle Oil to the base of each nail and massage in.

OPTIONAL:

If shape refinement is needed, remove gel residue with a nail wipe saturated with N.A.S. 99. Freshly applied builder needs a lighter touch, and will file easily using a 240 grit file and padded buffer. Refine shape with a 240-grit file, followed by a 240-grit buffer or an e-file. Cleanse nails thoroughly with a nail wipe saturated with N.A.S. 99 Cleansing Solution.