




PRO Nail Lacquer Application

For OPI Iconic Nail Lacquer, Nature Strong Natural Origin Lacquer, and Infinite Shine Long-Wear Lacquer



NAIL LACQUER SYSTEM

-  EASY APPLICATION
-  NO LED/UV CURE
-  DRY TIME 15 MINUTES
-  WIPE OFF REMOVAL

ICONIC NAIL LACQUER

- Up to 7-days of wear
- # 1 Salon brand worldwide
- 3-step system:
 - Natural Nail Base Coat
 - Iconic Formula Top Coat
- Iconic formula
- Ideal for pedicures, shade matched with OPI GelColor and Powder Perfection shades

NATURE STRONG NATURAL ORIGIN LACQUER

- Up to 7-days of wear
- Vegan plant-based system
- 3-step system:
 - Botanical Base Coat
 - Shades inspired by nature Top Coat
- Available in 40+ unique shades
- Ideal for clients looking for a Vegan, plant-based lacquer system

NEW INFINITE SHINE LONG-WEAR LACQUER

- Up to 11-days of wear
- Pre-cured gel technology locks on like gel, unlocks like lacquer
- 3-step system:
 - Gel-like Base Coat
 - Exclusive Gel-like shades
 - Gel-like Top Coat
- Available in 75 shades
- Ideal for clients looking for exclusive shades that offer gel-like wear with a quick and easy removal

STEPS

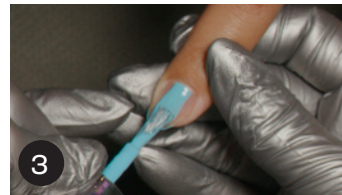
Before you begin, gently roll each bottle- Base Coat, color and Top Coat, to blend the ingredients for a smooth and even application.



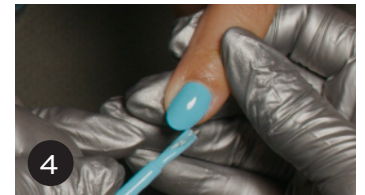
1 Prep those nails! Follow OPI Salon Lacquer Prep steps prior to lacquer application. Having smooth, clean nails will ensure your OPI



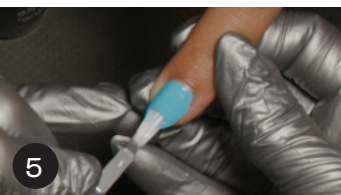
2 Apply a layer of Base Coat. Start by capping the nail to create a seal before applying to the surface of the nail. Repeat on remaining nails. Allow to dry 1-2 minutes.



3 Apply a layer of color. Start by capping the nail to create a seal before applying to the surface of the nail. Repeat on remaining nails. Allow to dry 1-2 minutes.



4 Apply a second coat of color. Start by capping the nail to create a seal before applying to the surface of the nail. Repeat on remaining nails. Allow to dry 1-2 minutes.



5 Apply a layer of Top Coat. Start by capping the nail to create a seal before applying to the surface of the nail. Repeat on remaining nails. Allow to dry.



6 Apply a drop of ProSpa Nail & Cuticle Oil to the cuticle of each nail and massage in.

PRO TIPS

Use fewer, smoother strokes to apply lacquer to the nail for a glossy, even finish.

Use RapiDry Nail Polish Dryer or DripDry Drops on Nail Lacquer or Nature Strong Lacquer to speed dry time.

Avoid using RapiDry Nail Polish Dryer or DripDry Drops on Infinite Shine Long-wear Lacquer to avoid wrinkling.

Instruct your clients to condition nails daily with ProSpa Nail & Cuticle Oil to keep skin and nails healthy and increase the wear of your mani.

O.P.I.