

# O·P·I

LOS ANGELES

## ABSTRACT NEGATIVE SPACE VELVET VISION | GEL COLOR

Complete GEL COLOR  
Nail Prep Step by Steps

BEFORE  
YOU  
BEGIN

### PRO TIP

When applying VELVET VISION, cap the free edge first to avoid interrupting how the magnetic pigments lay.



### PRODUCTS USED

- OPI GEL COLOR Stay Classic or Stay Strong Base Coat
- OPI GEL COLOR Put it in Neutral
- OPI GEL COLOR Psychic Plum
- OPI GEL COLOR Alpine Snow
- Magnet
- OPI GEL COLOR Stay Shiny Top Coat
- OPI LED Light
- OPI EXPERT TOUCH Nail Wipe
- OPI N.A.S. 99 Cleansing Solution
- OPI PRO SPA Nail & Cuticle Oil
- Liner Brush

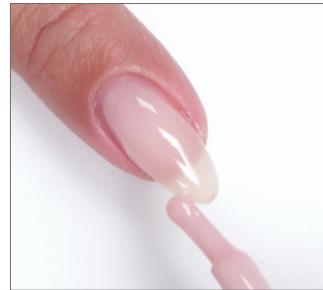


### STEP BY STEPS

Apply one thin and even coat of OPI GEL COLOR Base Coat of choice, making sure to cap the free edge, and cure for 30 seconds in the OPI LED LIGHT.

1

Apply one coat of Put it in Neutral and cure for 30 seconds.



2

With a liner brush and Psychic Plum, draw an abstract shape on the nail and fill in. Use the magnet to achieve desired effect and cure for 30 seconds.



3

With Alpine Snow, outline the abstract shape in varying thicknesses with a clean liner brush and cure for 30 seconds.



### FINISH

Apply one even coat of OPI GEL COLOR Stay Shiny Top Coat, making sure to cap the free edge, and cure for 30 seconds. Cleanse with OPI EXPERT TOUCH Nail Wipe and OPI N.A.S. 99 Cleansing Solution. Apply OPI PRO SPA Nail & Cuticle Oil and massage in.