

O.P.I. GelColor Intelli-Gel™ System Super Strong Base Coat

PRO Salon Service
Application Guide



WHAT YOU'LL NEED

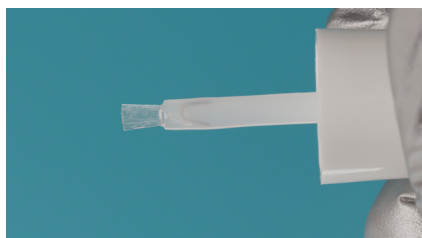
OPI Products:
GelColor Super Strong Base Coat
GelColor Super Gloss Top Coat

GelColor Shade of Choice
OPI Star Light Gel Lamp
N.A.S. 99 Cleansing Solution

Additional Products:
Nail wipes
Glow Up Nail & Cuticle Oil

THE STEPS

Shake bottles vigorously for 1 minute to thoroughly blend ingredients. Prep those nails!
Follow OPI Nail Prep step-by-steps.



1

When opening your bottle, wipe the sides of the stem and the sides of the brush hairs to remove all excess product. Your brush should look almost naked-saturated but not loaded. One brush load typically covers five nails on most hands.



2

Start by capping the free edge of all five nails first to seal the nail.



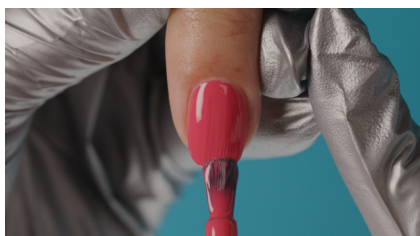
3

Pull the sidewalls away from the nail, then SCRUB the base coat in using short, circular motions using firm pressure. The result should be a thin coat and finish that looks like double-sided sticky tape. Textured and tacky, not slippery or glossy. Cure for 30 seconds in the Star Light Gel Lamp.



4

Apply a thin coat of color, starting by capping the free edge to seal, and then apply to the surface of the nail leaving a small free margin around the perimeter of the nail. Cure for 30 seconds.



5

Apply a second thin coat of color, starting by capping the free edge to seal, and then apply to the surface of the nail leaving a small free margin around the perimeter of the nail. Cure for 30 seconds.



6

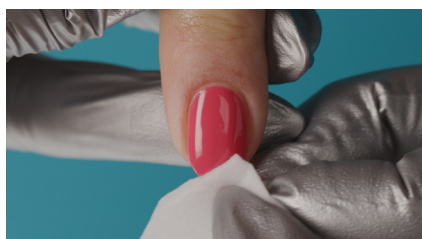
Apply a thin coat of Super Gloss Top Coat to nails, starting by capping the free edge of the nail to seal it, then cover the surface of the nail, leaving a small free margin around the perimeter to avoid touching the skin. Cure for 30 seconds.

O.P.I. GelColor Intelli-Gel™ System Super Strong Base Coat

PRO Salon Service
Application Guide

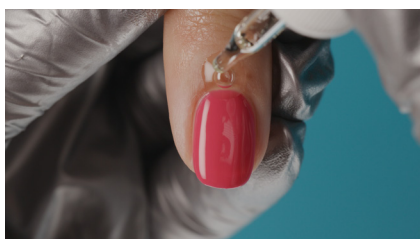


THE STEPS



7

Cleanse the nails to remove gel residue with a nail wipe saturated with N.A.S. 99 Cleansing Solution.



8

Apply a drop of Glow Up Nail & Cuticle Oil and massage in.

DO	DON'T
Remove all excess base coat from the stem and brush.	Overload the brush! Remember less is more.
Scrub it in!	Brush over the nail in even, smooth, perfecting layers.
Only use as a base coat, and apply it THIN.	Float the brush over the nail to self-level or hide imperfections.