

# O.P.I.

## GElement™ Application



### GEL POLISH APPLICATION BEST PRACTICES

- For ease of use, apply all steps on one hand at a time.
- Only cure your GELement base, color, and top coat using the GELement lamp for best results.
- Shake bottle vigorously for 30 seconds.
- Paint the free edge of the nail first.
- Keep coats THIN. You should barely have any polish on your brush to prevent your mani from peeling and ensure it cures properly.
- Avoid gel lifting and possible skin irritation by keeping it off the skin-if product gets on skin, remove it before curing with cuticle stick.
- When using the OPI GELement lamp, it is recommended that you apply each polish step one hand at a time, starting with four fingers and curing for 60 seconds before applying to the thumb and curing for 60 seconds.

### THE STEPS

BEFORE YOU BEGIN: Start with clean dry hands.

#### STEP 1: PREP

Prep those nails!



a

**SHAPE:** Trim excess length if needed. Refine shape using the Shape Up side of the nail file.



b

**PUSH:** Gently push back cuticles using the cuticle stick.



c

**BUFF:** Buff the nail surface with the Shape Up Side of the nail file to remove the shine and improve gel adhesion. Only buff new growth on reapplication.



d

**CLEANSE:** Scrub the nail with the prep pad to remove dust and oils.

#### STEP 2: BASE COAT

Shake base coat for 30 seconds.



a

**SEAL:** Drain excess product from the brush, then paint the edge of each nail.



b

**APPLY THIN:** Drain excess product from one side of the brush. Apply a thin coat down the center of the nail, then down each side. Apply to 4 nails.



c

**CURE 4 FINGERS:** Cure for 60 seconds using the GELement Lamp. The lamp will turn off automatically after 60 seconds.



d

**THUMB:** Repeat application steps on the thumb and cure in the GELement Lamp for 60 seconds.

# O.P.I

## GELelement™ Application



### STEP 3: COLOR

Shake gel polish color for 30 seconds.



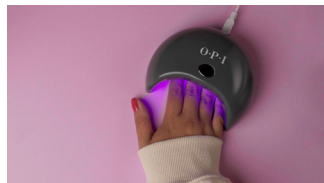
a

**SEAL:** Drain excess product from the brush, then paint the edge of each nail.



b

**APPLY THIN:** Drain excess product from one side of the brush. Apply a thin coat down the center of the nail, then down each side. Apply to 4 nails.



c

**CURE 4 FINGERS:** Cure for 60 seconds using the GELelement Lamp.



d

**THUMB:** Repeat application steps on the thumb and cure in the GELelement Lamp for 60 seconds.

Repeat: Apply 1-2 coats to reach desired color coverage. Cure each coat. First coat may appear slightly streaky with some shades. Additional coats will even out color.

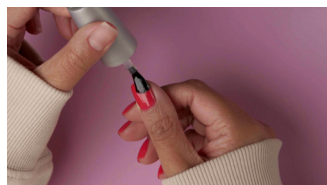
### STEP 4: TOP COAT

Shake No-Wipe Top Coat for 30 seconds.



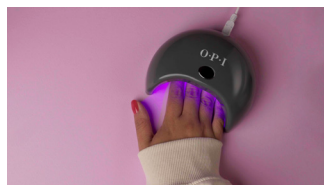
a

**SEAL:** Drain excess product from the brush, then paint the edge of each nail.



b

**APPLY THIN:** Drain excess product from one side of the brush. Apply a thin coat down the center of the nail, then down each side. Apply to 4 nails.



c

**CURE 4 FINGERS:** Cure for 60 seconds using the GELelement Lamp.



d

**THUMB:** Repeat application steps on the thumb and cure in the GELelement Lamp for 60 seconds.

Repeat on the other hand.