

O.P.I

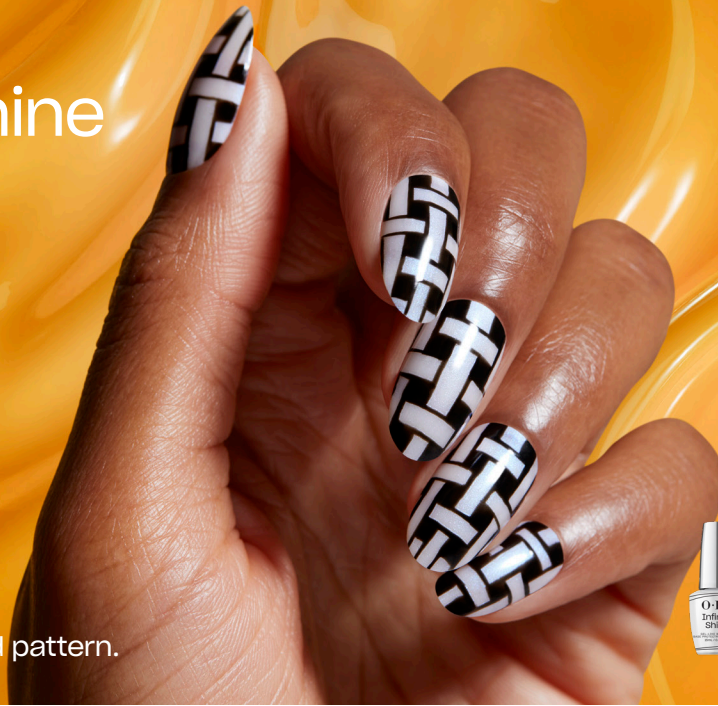
NEW

Infinite Shine

PRO Nail Art

All Knotted Up

Put in the linework to weave this detailed pattern.



PRODUCTS USED

Infinite Shine Gel-like Base Coat
Infinite Shine Gel-like Top Coat

Infinite Shine shades:
Shimmer Takes All
Black Onyx or Lady in Black

Detail brush
ProSpa Nail & Cuticle Oil

STEPS

BEFORE YOU BEGIN: Prep those nails! Follow our OPI Lacquer prep basics. Apply one coat of Infinite Shine Gel-like Base Coat and allow to dry.



1

Apply a thin coat of Shimmer Takes All to the nail. Allow to dry for 1-2 minutes. Repeat for coverage.



2

Dip a detail brush in Black Onyx and create a small square slightly to the left of center. Add a second square slightly right of center.



3

With a detail brush and Black Onyx create a line connecting the squares. Create a second line below the first and create a second set of squares below this line.



4

Create a line on each side connecting the top and bottom squares.



5

With the detail brush and Black Onyx, extend a thin line from the bottom of the squares connecting them.

Repeat this pattern alternating the lines to create a woven pattern. Allow to dry 2-3 minutes.

THE FINISHING TOUCH

Apply a layer of Infinite Shine Gel-like Top Coat. Allow to dry. Apply ProSpa Nail & Cuticle Oil to each cuticle and massage in.