

# O.P.I.

## GElevate™ PRO Salon Service Removal Step-by-Step



Salon Enhancement Removal: Powder Perfection, Sculpting Gel, GElevate™ Extension System and Acrylic services.

### WHAT YOU'LL NEED

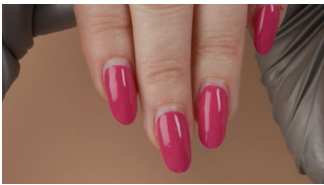
Expert Touch Lacquer Remover  
Expert Touch Removal Wraps

ProSpa Nail & Cuticle Oil  
Expert Touch Lint Free Nail Wipes

180-grit file  
100/180-grit buffer

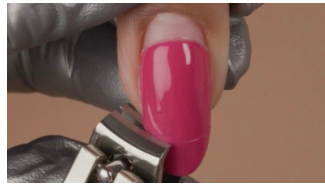
E-file & bits  
Nail trimmer

### THE STEPS



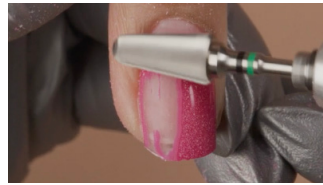
1

Start with clean dry hands.



2

Use an e-file or a nail trimmer to trim away excess nail length.



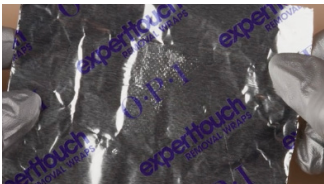
3

Reduce the bulk of the product, about 75-90% from nails with an e-file and a course bit and medium high speed.



OPTIONAL:

Change the bit to a fine diamond bit and low speed to remove the remaining layer of product without damaging the nail.



OPTIONAL:

If GelColor Super Base Base Coat was used, the remaining layer can be soaked off.



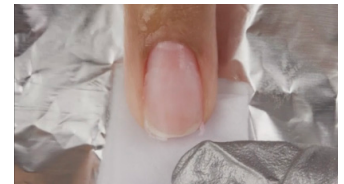
4

Place a folded Expert Touch Lint Free Wipe onto the padded area in your Expert Touch Removal Wrap.



5

Saturate both the wipe and the wrap pad with Expert Touch Lacquer Remover.



6

Place the pad of the wrap against the free edge of the nail.

# O.P.I.

## GElevate™ PRO Salon Service Removal Step-by-Step

Salon Enhancement Removal: Powder Perfection, Sculpting Gel, GElevate™ Extension System and Acrylic services.



### THE STEPS CONTINUED



7

Fold the wrap, placing the pad on the surface of the nail.



8

Wrap one side of the removal wrap under the finger, followed by the other side and squeeze to tighten. Repeat on remaining fingers.



9

Set a timer and soak for 25 minutes.



10

Remove the wrap. Product should release and flake away from the nail.



11

Use a cuticle stick to gently flake away any excess pieces of softened product. If product does not slide off of the natural nail with ease, re-apply wrap and wait for another 5 minutes.



12

Have your client wash and dry hands thoroughly.



13

Apply a drop of ProSpa Nail & Cuticle Oil to the base of each nail and massage in.