

# O.P.I. GelColor Intelli-Gel™ System

## PROFESSIONAL GELCOLOR REMOVAL GUIDE



### WHAT YOU'LL NEED

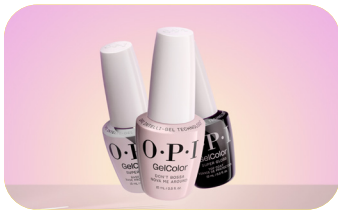
OPI Products:  
Expert Touch Lacquer Remover

Expert Touch Removal Wraps  
Cuticle Stick

Optional:  
240-grit file or E-file and  
medium grit bit

ProSpa Nail & Cuticle Oil  
Nail wipes

### THE STEPS



1

OPTIONAL: For dry skin or darker lacquer shades apply a drop of ProSpa Nail & Cuticle Oil to the base of each nail and massage in prior to removal.



2

Fully saturate an Expert Touch Removal Wrap with Expert Touch Lacquer Remover.



3

Fold the edge of the wrap over to reinforce.



4

Place the pad of the wrap against the free edge of the nail.



5

Fold the wrap, placing the pad on the surface of the nail.



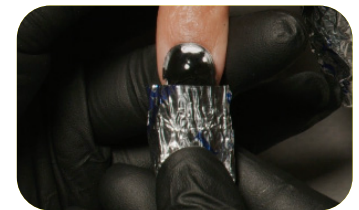
6

Wrap one side of the removal wrap under the finger to ensure the nail is fully encased by the remover pad, followed by the other side and squeeze to tighten. Repeat on remaining fingers.



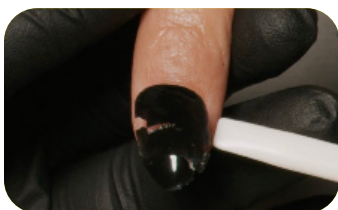
7

Set a timer for 15 minutes.



8

Lightly press and rub the finger tip to help loosen the softened GelColor product inside the wrap, then gently twist back and forth while pulling away from the nail. Remove the wrap.



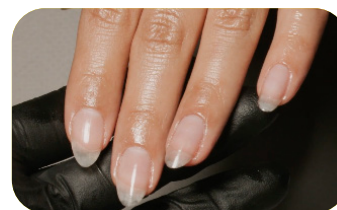
9

Use a cuticle stick to gently flake away any excess pieces of GelColor.



10

Have your client wash and dry hands thoroughly.



11

Apply a drop of ProSpa Nail & Cuticle Oil to the base of each nail and massage in.

### PRO TIP

If using GelColor No Wipe Top Coat or to speed up your removal, file the free-edge and buff the surface with a 240-grit file or an E-file with a medium grit bit.