

O.P.I.

GElevate™

PRO Application
Overlay / Structured Mani
Step-by-Step



WHAT YOU'LL NEED

GElevate 4-in-1 Builder in OPI'm Flawless
GElevate 4-in-1 Builder shade of choice
GelColor Super Gloss Top Coat
OPI Star Light Gel Lamp
N.A.S. 99 Cleansing Solution

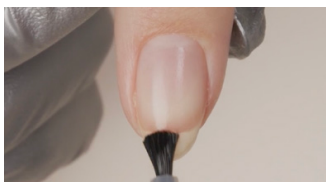
ProSpa Nail & Cuticle Oil
Expert Touch Lint Free Nail Wipes
180-grit file
100/180-grit buffer
E-file & bits

OPTIONAL:
Lightning Flash Cure Gel Lamp
Bondex™ Bonding Agent
GelColor Super Base Base Coat

Liner brush
240-grit file
240-grit buffer

THE STEPS

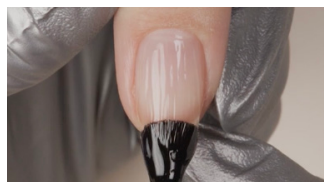
BEFORE YOU BEGIN: Prep those nails! Follow our OPI Salon Pro prep basics.



OPTIONAL:
Customize your service for longer wear – apply a coat of Bondex Bonding Agent and allow to dry. Skip this step if a HEMA-free service is desired.

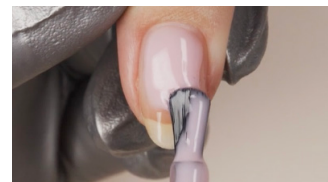


OPTIONAL:
For a HEMA-free and soak-off friendly service, skip Bondex application and apply a thin coat of GelColor Super Base Base Coat to all 5 nails. Cure for 30 seconds in the OPI Star Light.



1

Apply a thin coat of GElevate 4-in-1 Builder in Clear (Shade: OPI'm Flawless) to all 5 nails leaving a thin free margin around the perimeter of the nail. Cure for 30 seconds in the Star Light Lamp.



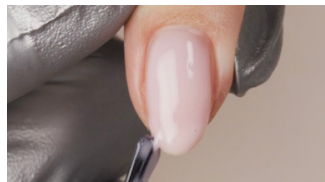
2

Pick up a small bead of GElevate 4-in-1 Builder in the shade of your choice on one side of the brush. Place the bead in the cuticle area and gently nudge the product towards the cuticle and from side to side leaving a small free margin.



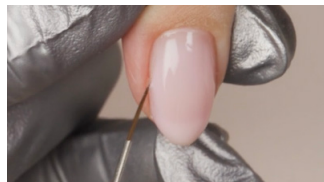
3

Using lighter pressure, guide the gel from side to side while pulling forward to create the apex and leaving a larger free margin at the sides.



4

Use the corner of the brush to guide the gel down the sidewalls leaving a small free margin.



5

Review the structure of the nail and use the corner of the bottle brush to perfect the apex and shape.



PRO TIP

Flip the nail upside down for 3-5 seconds to allow the apex to smooth.

PRO TIP

For more precision, use a liner brush to refine.

O.P.I.

GElevate™

PRO Application
Overlay / Structured Mani
Step-by-Step

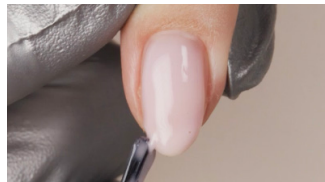


THE STEPS CONTINUED



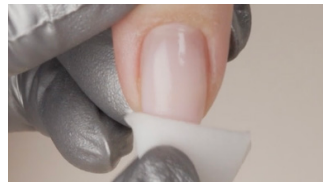
6

Flash cure the nail as needed with the Lightning Flash Cure Gel Lamp.



7

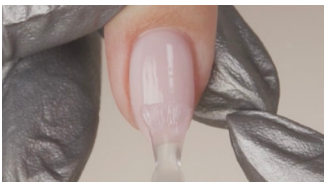
Repeat steps 2-6 on remaining nails until all nails are complete. Cure for 60 seconds (if using the clear builder, cure for 30 seconds) in the Star Light Gel Lamp. Repeat on the other hand.



OPTIONAL:
If shape refinement is needed, remove gel residue with a nail wipe saturated with N.A.S. 99.

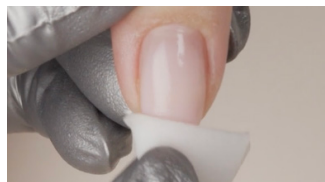


OPTIONAL:
Freshly applied builder needs a lighter touch, and will file easily using a 240 grit file and padded buffer. Refine shape with a 240-grit file, followed by a 240-grit buffer or an e-file. Cleanse nails thoroughly with a nail wipe saturated with N.A.S. 99 Cleansing Solution.



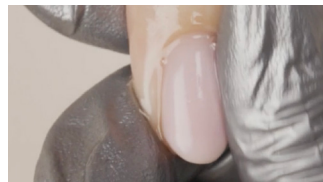
8

Finish nails with your choice of GelColor Shade and Super Gloss Top Coat.



9

Remove gel residue with a nail wipe saturated with N.A.S. 99 Cleansing Solution.



10

Apply a drop of ProSpa Nail & Cuticle Oil to the base of each nail and massage in.