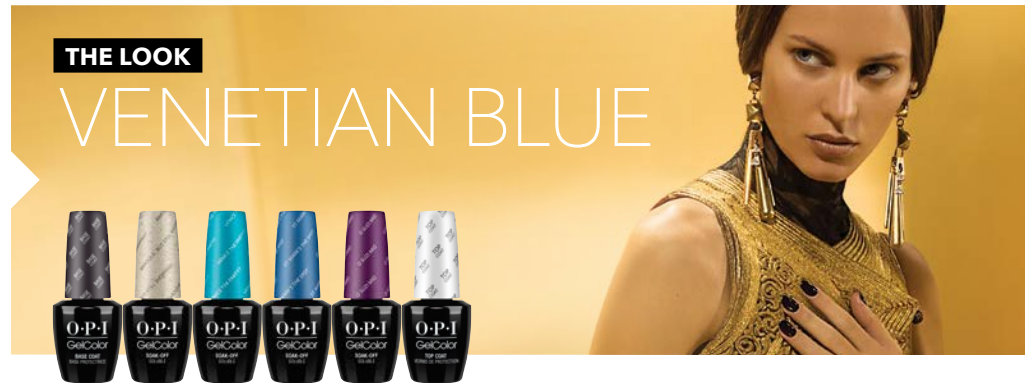


OPI STEP BY STEP

OPI GelColor

FALL | WINTER 2015
VENICE
COLLECTION



CREATE THIS LOOK

On a properly prepared nail, apply a thin coat of **OPI GelColor Base Coat**. Cure 30 seconds in the **OPI LED Light**.



1

Apply one thin coat of **OPI GelColor Baroque...But Still Shopping!** Cap free edge. Cure 30 seconds.



2

Apply one thin coat of **OPI GelColor Venice the Party?** Cure 30 seconds.



3

Apply one thin coat of **OPI GelColor St. Mark's the Spot**. Cure 30 seconds.



4

Apply gold transfer foil in a light random pattern onto the sticky gel residue.



5

Using a sponge, lightly dab **OPI GelColor O Suzi Mio** randomly over the nail. Cure 30 seconds.

Apply a thin coat of **OPI GelColor Top Coat**. Cure 30 seconds. Remove gel residue with **Expert Touch Nail Wipe** and **N.A.S. 99**.

PRODUCTS USED

- | | | |
|---|---|---|
| <input type="checkbox"/> OPI GelColor Base Coat | <input type="checkbox"/> OPI GelColor St. Mark's the Spot | <input type="checkbox"/> Expert Touch Nail Wipe |
| <input type="checkbox"/> OPI GelColor Baroque...
But Still Shopping! | <input type="checkbox"/> OPI GelColor O Suzi Mio | <input type="checkbox"/> N.A.S. 99 |
| <input type="checkbox"/> OPI GelColor Venice the Party? | <input type="checkbox"/> Gold Transfer Foil | <input type="checkbox"/> OPI LED Light |
| | <input type="checkbox"/> OPI GelColor Top Coat | |

O·P·I