

OPI GelColor Intelli-Gel™ System

SALON APPLICATION GUIDE

It's a stroke of genius that makes your work effortless.
3 Weeks of professional wear.



INTELLI-BRUSH™



SUPERCHARGED PIGMENT

WHAT YOU'LL NEED

OPI Products:
GelColor Super Base Base Coat
GelColor Super Gloss Top Coat

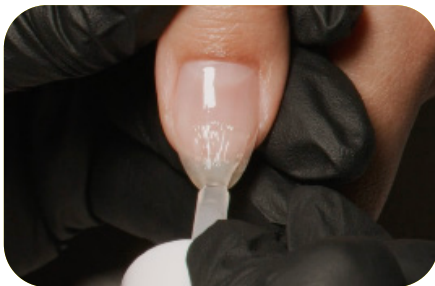
NEW OPI GelColor Shade:
Black Onyx® / Lady in Black

OPI Star Light Gel Lamp
NAS 99 Nail Cleansing Solution
Additional Products:

Nail wipes
ProSpa Nail & Cuticle Oil

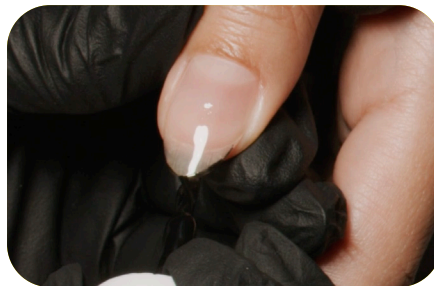
THE STEPS

Shake bottles vigorously for 1 minute to thoroughly blend ingredients. Prep those nails!
Follow OPI Salon Service Prep steps prior to GelColor application.



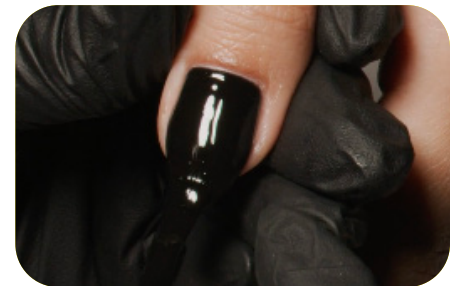
1

Apply a thin coat of Super Base Base Coat to nails. Start by capping the free edge of the nail to seal and apply to the surface of the nail leaving a small free margin around the perimeter of the nail. Cure for 30 seconds in an OPI Star Light Gel Lamp.



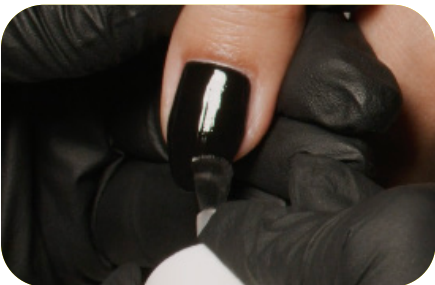
2

Apply a thin coat of color, start by capping the free edge to seal and apply to the surface of the nail leaving a small free margin around the perimeter of the nail. Cure for 30 seconds.



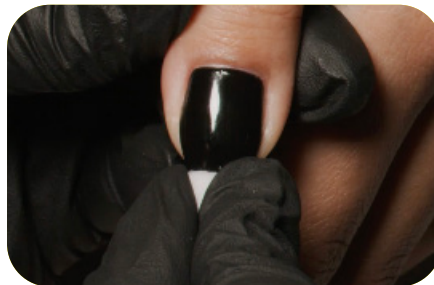
3

Apply a second thin coat of color, start by capping the free edge to seal and apply to the surface of the nail leaving a small free margin around the perimeter of the nail. Cure for 30 seconds.



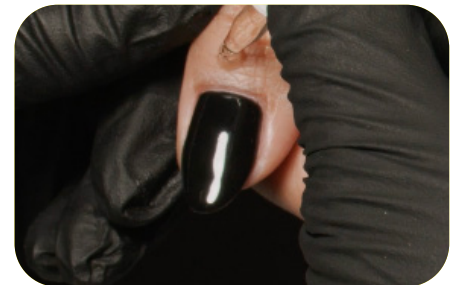
4

Apply a thin coat of Super Gloss Top Coat to nails, start by capping the free edge of the nail to seal and apply to the surface of the nail leaving a small free margin around the perimeter of the nail. Cure for 30 seconds.



5

Cleanse the nails to remove gel residue with a nail wipe saturated with NAS 99 Nail Cleansing Solution.



6

Apply a drop of ProSpa Nail & Cuticle Oil to the base of each nail and massage in.