

# O·P·I

## WICKED

ONLY IN THEATERS

NEW

## Infinite Shine

DIY Nail Art

### Look at Her, She's Wicked!

Nail Elphaba's green with a stamped glowing design.



#### WHAT YOU'LL NEED

Infinite Shine Gel-like Base Coat  
Infinite Shine Gel-like Top Coat

Infinite Shine shades:  
OPI'm Phosphorescent!  
Ozmopolitan

Stamping plate  
Stamper

Scraper  
ProSpa Nail & Cuticle Oil

#### THE STEPS

BEFORE YOU BEGIN: Prep those nails! Follow our OPI Lacquer Prep basics.  
Apply one coat of Infinite Shine Gel-like Base Coat and allow to dry.



1

Apply a thin coat of OPI'm Phosphorescent! to the nail. Allow to dry for 1-2 minutes. Repeat for coverage.



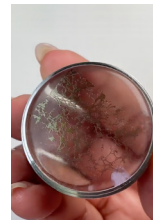
2

Apply Ozmopolitan to the stamping plate pattern.



3

Use the scraper to disperse the color into the pattern and remove excess color.



4

Immediately use the stamper to pick up the pattern.



5

Align the pattern and press the stamper onto the nail. Roll the stamper from the center of the nail and around the perimeter to deposit the pattern.

#### THE FINISHING TOUCH

Apply a coat of Infinite Shine Gel-like Top Coat. Allow to dry.  
Apply ProSpa Nail & Cuticle Oil to the base of each nail and massage in.