



Transport for NSW

Sydney Gateway

Project update | January 2022

Welcome to 2022 and a new year of construction for Sydney Gateway

Construction work on Sydney Gateway is ramping back up.

Thank you - the local community and local businesses - for your patience while we work and navigate the latest COVID-19 challenges.

We are mindful of our work impacting the local community - especially those who are back to working or studying at home. We will continue to do everything we can to reduce our impact on your living environment.

Upcoming work

Our focus during the first quarter of 2022 is the construction and opening of the shared pedestrian and cycling path along Alexandra Canal. We hope to provide a community event at the opening of this new path however this will be subject to the latest Covid restrictions at the time.

We are also stabilising the ground at our Northern Lands and Tempe Lands work areas before we build the new road and bridges. This includes a new major arch bridge over Alexandra Canal which will be wider than Sydney Harbour Bridge.

We'll also start to install concrete piles on Qantas Drive between Robey and O'Riordan streets that will support the new flyover into the Domestic Terminals.

Your safety, our priority

Our priority during construction is to continue to ensure you can move safely around the area while we're working. Our 24/7 Traffic Control Room (TCR), monitors the road network with a dedicated traffic response crew for the Sydney Gateway project.

Our TCR operators have the ability to direct motorists, pedestrians and emergency response crews around our construction zones.

Scan the QR code to see what the new pedestrian and cycle path will look like along Alexandra Canal.



What's happening in Tempe?

We are pleased to share that the majority of excavation and bulk earthworks is almost complete at our Tempe Lands site and the temporary noise mound is now complete.

In the first quarter of 2022 we'll be:

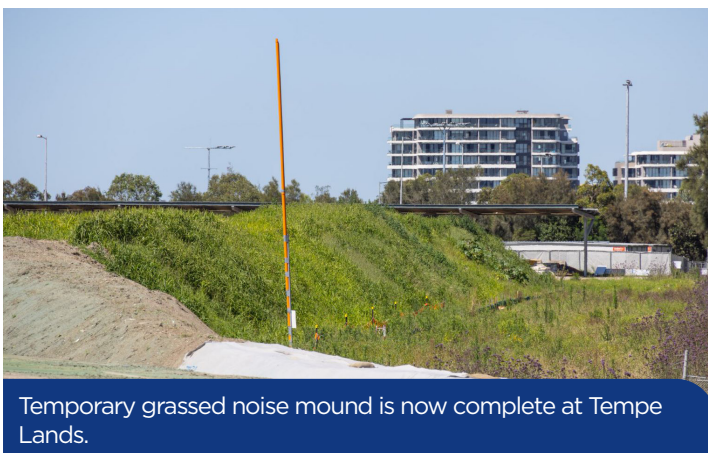
- finishing major excavation and bulk earthworks
- building concrete piling pads
- continuing to install concrete columns into the ground to stabilise the area for the new road through Tempe Lands
- building retaining walls
- completing the first section of the new pedestrian and cycling path along the northern side of Alexandra Canal

We understand that noise and potential odour have been important issues to surrounding residents.

Throughout our work at Tempe Lands we have helped reduce our impacts by installing a temporary noise mound to help reduce construction noise. Our planning and construction management means no odour has been encountered to date.

We've also developed a noise information sheet to help answer some of the questions and concerns raised by the Tempe community to date.

Scan the QR code to view the information sheet on our website:



Temporary grassed noise mound is now complete at Tempe Lands.

What's happening in Mascot?

You have likely seen a number of changes in the Mascot area on Airport Drive and Qantas Drive. This is because we have been setting up our sites to widen and realign these roads and prepare the area for the new flyover.

In the first quarter of 2022 we'll be:

- finishing the demolition of vacant airport buildings
- continuing to widen the road between Robey and O'Riordan streets
- installing concrete piles between Robey and O'Riordan streets to support the future flyover into the Domestic Terminals.
- continuing to move utilities

We'll continue to maintain two lanes in each direction on Airport Drive and Qantas Drive during peak hours.

Building the flyover will require a large amount of ground support known as 'piling'. Piling involves drilling into the ground and installing concrete to make columns. Our piling rig is currently operating during the day and at night on Qantas Drive between Robey and O'Riordan streets.

The new flyover will be close to 550 meters long and will separate traffic travelling to Sydney Airport from Mascot and Port Botany traffic.

Scan the QR code to see the future flyover on Qantas Drive from O'Riordan Street:



Future flyover on Qantas Drive.

We're passionate about building our most important assets... our people.

With construction well underway in 2022, we are also close to hitting our peak employment numbers. Below is a snapshot of who we have employed and where we are sourcing our construction materials from. We are excited to see these numbers grow as the project continues until late 2024.



Over **3000** people
inducted on the project



2% hold a refugee or
asylum seeker visa



10% of workers
are female



100% of concrete and
steel are Australian made



5% of workers live
in the adjoining local
council areas



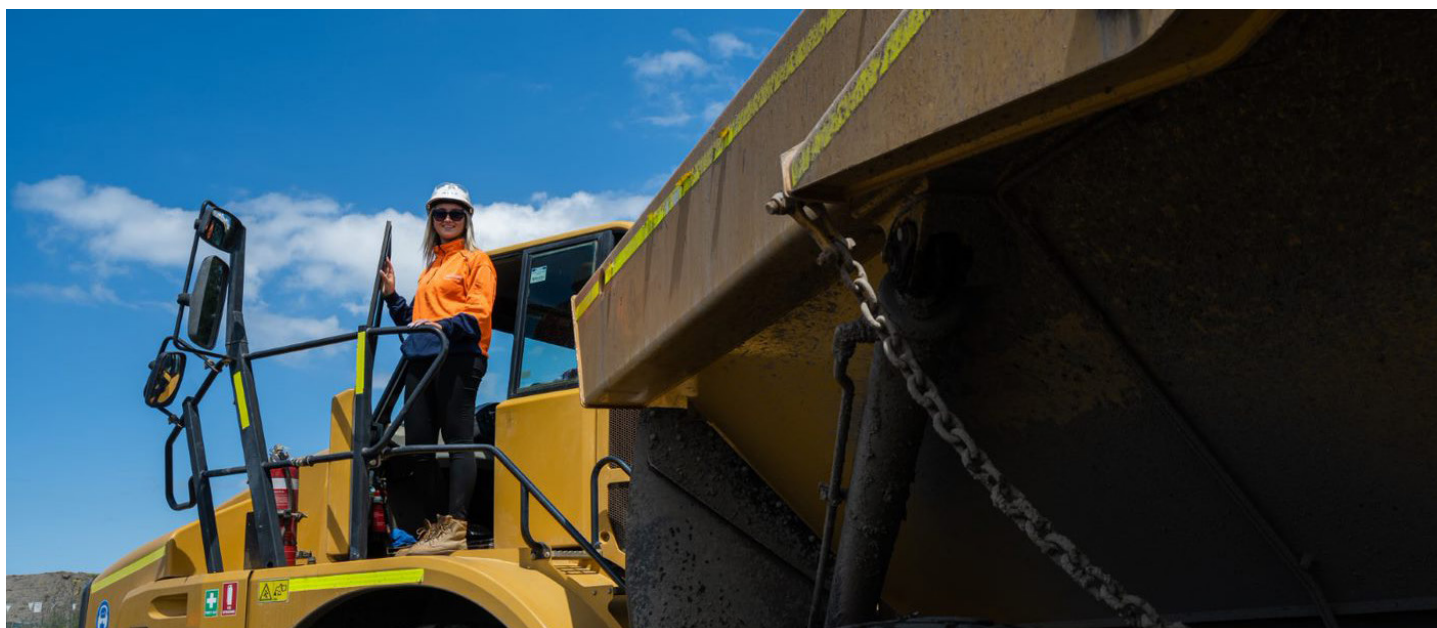
Approximately **90%** of
suppliers are based in NSW



3% of workers
identified as Aboriginal
or Torres Strait Islander

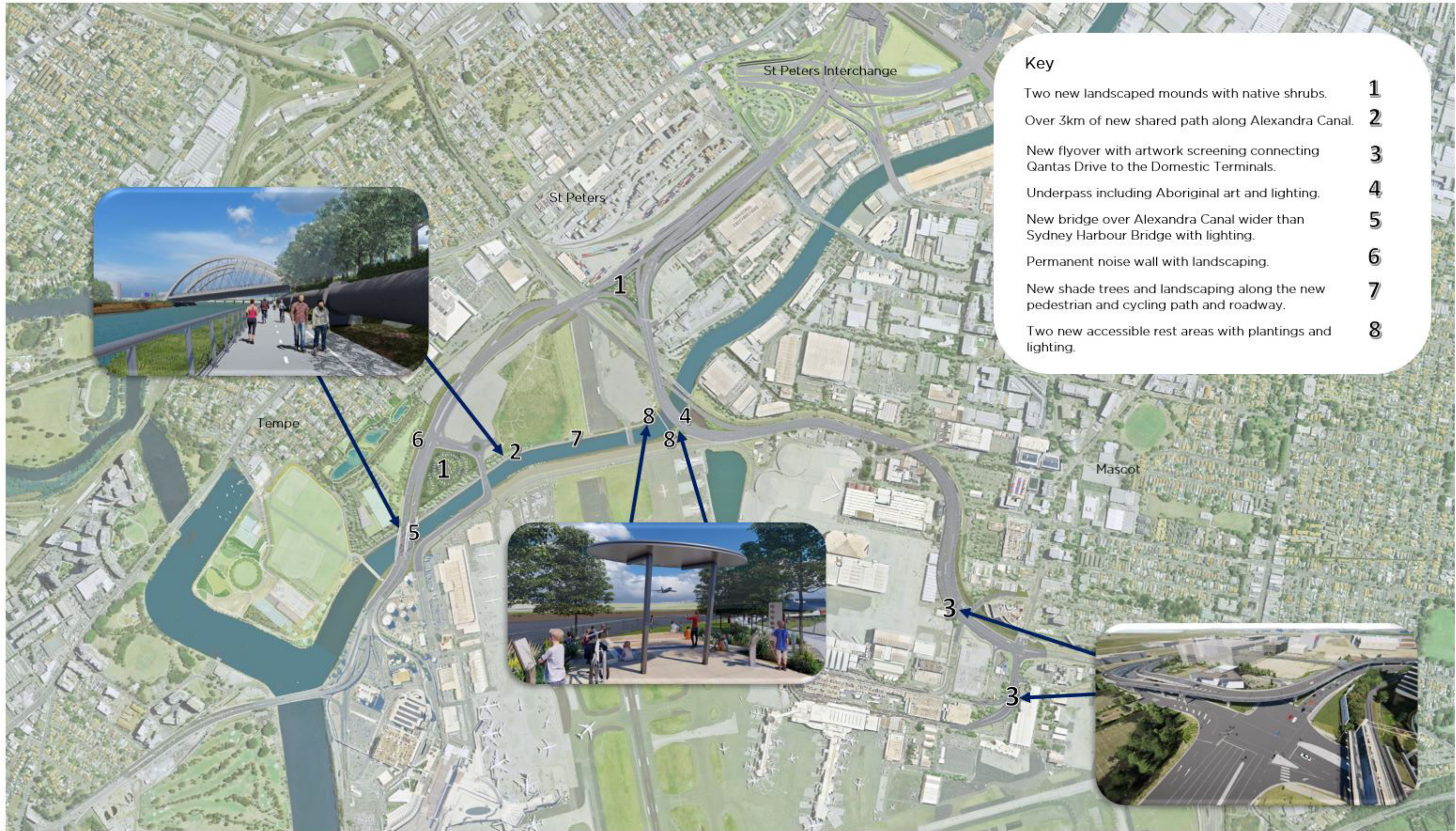
Want to join our team?

Employment and business opportunities are currently available on the Sydney Gateway project. Visit the Join our Team page at our [website](https://nswroads.work/SydneyGateway).



Your new gateway to Sydney - Place, Design & Landscape Plan

There'll be a number of changes to the visual landscape once Sydney Gateway is complete shown in the map below.



Your feedback on our Place, Design & Landscape Plan (PDLP)

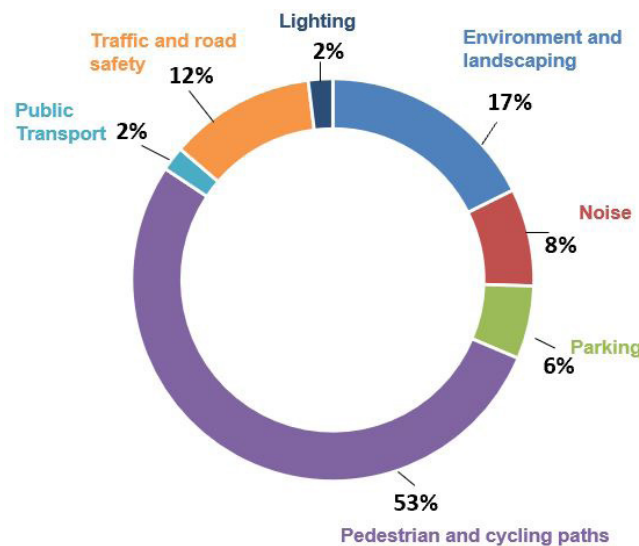
Thank you to everyone who provided a comment or submission on our draft Plan. Your feedback during consultation in September 2021 guided our PDLP design and placemaking. Our key goals when developing the PDLP was to:

- consider the history and culture of the local area
- look at opportunities to reconnect communities with local heritage and connections to Country
- improve the design to deliver better journeys

How your feedback shaped our Plan

Below you'll find a summary of the topics raised in the submissions received during the PDLP consultation period. Some of your feedback however could not be addressed due to safety and design constraints.

PDLP formal submissions summary



Sentiment from virtual room

Virtual room users had the opportunity to provide their sentiment on key features of the PDLP:



93% Positive

Most liked:

- lighting designs
- bridge structures and flyover
- rest areas along the new walking and cycling path

While the consultation period is now closed, you can learn more about the PDLP in our [Virtual Room](#).



Artist impression of the shared path rest area

You told us, we listened

Based on the submissions we received, the final PDLP has been updated to include:

- Additional native planting along the pedestrian and cycle path which includes species to enhance the visual amenity and greenery along the path.
- The rest areas on the new shared path have been further developed to increase accessibility and amenities for pedestrians.
- Additional shade trees and green buffers.
- Artwork has been extended to wrap around the pillars of the future flyover into the Domestic Terminals.
- The artwork screen on the flyover has been extended along the full length.

The updated PDLP is currently with the Department of Planning, Industry & Environment (DPIE) for approval. We will let you know once the final PDLP is approved and available on our website for viewing. **To stay up to date, subscribe to project updates by visiting the projects [interactive portal](#).**

We sincerely thank you for your feedback and suggestions on our PDLP.

We've moved to online project updates



We've moved to email and web only versions of these project updates. This will reduce the amount of paper we send to our local community.

Please visit nswroads.work/sydneygateway and register to receive the next online issue.

Should you wish to receive a paper copy please email or call us using the contact details below.

Keep an eye out for our monthly notifications and upcoming work videos in the coming months.



Tell us how we are doing

We've been providing regular information about the project through direct mail, email, face-to-face engagement and updates on our website.

We're inviting you to provide feedback on how we're consulting with you and the information you're receiving. We're interested in your opinions in how we can improve our communication with you.

Please complete the survey at nswroads.work/communitysurvey



For the latest traffic updates:

Call **132 701**

Visit www.livetraffic.com

Download the App

Live Traffic NSW

Contact us

If you have any questions or would like more information please contact us:



1800 654 446



sydneygateway@jhs.com.au

Check out our new look website:



nswroads.work/sydneygateway



Translating and Interpreting Service

If you need an interpreter, please call the Translating and Interpreting Service (TIS National) on **131 450** and ask them to telephone Transport for NSW on 1800 654 446.

Cantonese

若你需要口譯員，請致電**131 450**，聯絡翻譯口譯服務署 (TIS National)，要求他們致電1800 654 446 聯絡Transport for NSW。

Mandarin

如果你需要口譯員，請致電**131 450**，联系翻译口译服务署 (TIS National)，要求他们致电1800 654 446，联系Transport for NSW。

Greek

Αν χρειάζεστε διερμηνέα, παρακαλείστε να τηλεφωνήσετε στην Υπηρεσία Μεταφραστών και Διερμηνέων (TIS National) στο **131 450** και ζητήστε να τηλεφωνήσουν στο Transport for NSW στο 1800 654 446.

Indonesian

Apabila Anda membutuhkan seorang juru bicara, harap telepon Layanan Penerjemah dan Juru Bahasa (Translating and Interpreting Service - TIS National) pada 131 450 dan minta mereka menelepon Transport for NSW pada 1800 654 446.

Macedonian

Ако ви треба преведувач, ве молиме јавете се во Службата за писмено и усмено преведување (TIS National) на 131 450 и замовете ги да се јават во Transport for NSW на 1800 654 446.

Vietnamese

Nếu cần thông ngôn viên, xin quý vị gọi cho Dịch vụ Thông Phiên dịch (TIS Toàn quốc) qua số **131 450** và yêu cầu họ gọi cho Transport for NSW qua số 1800 654 446.

Privacy. Transport for NSW are collecting your personal information in connection with the Sydney Gateway ("the Project"). In addition to collecting your name and contact details we may collect other information such as your submissions and other communications with us. We will retain and use this information for consultation purposes, including communications and analysis in connection with the Project. We will not disclose your personal information to third parties unless authorised by law and if we include your submissions in any public report we will not identify you. Providing your personal information is voluntary but if you do not provide it we may not include you on our stakeholder database and you might miss further consultation opportunities. Your personal information will be held by us and you can contact us to access or correct it. Please write to us at sydneygateway@jhs.com.au or call on 1800 654 446. For further information, please see Transport for NSW's Privacy Management Plan on our Privacy page or contact privacy@transport.nsw.gov.au.