

Q&A with Bjorn, Aviation Safety Manager and Inner West local



We caught up with Aviation Safety Manager Bjorn Nielsen who’s been working hard to keep passengers safe as they navigate Sydney Airport.

He’s a proud Inner West local calling Ashfield home, a stone’s throw from Sydney Airport. Find out what it’s really like to work at Sydney Airport, what his role involves, and where he finds the best cup of coffee!

Read the full Q&A with Bjorn by scanning the QR code below and find out more about your friendly local airport staff.

Local schools explore Sydney Airport!

Sydney Airport recently launched school tours, inviting local students to explore the airport’s operations and learn about exciting career possibilities.

Sixty students from Marrickville Public School hit the runway for the first tour.

The day was packed with memorable experiences including having an A380 plane fly right over their heads, a close-up experience with the airport’s firefighting team, and a thrilling bus tour across the airfield.

The school tours will continue in 2025 when Sydney Airport will host up to 20 more schools from the local area.

Scan the QR code on the right to read more and find out how your school can get involved.



Scan to read these stories and more or visit sydneyairport.com.au/community



SYD
Sydney Airport

In 2025, we’ll be sharing our master plan with you, outlining our vision and plans for the next 25 years.



KEEP UP TO DATE

Scan to stay connected with the latest news at Sydney Airport and subscribe to our digital newsletter.

Sydney Airport acknowledges the Traditional Custodians of the lands, waterways and skyways where we work and in which we live. We pay respect to Elders past and present, and recognise the continuation of cultural, spiritual and educational practices of First Nation peoples throughout Australia.

Community newsletter

STAY UP TO DATE ON WHAT’S HAPPENING AT SYDNEY AIRPORT – THE GATEWAY TO AUSTRALIA.

SYD
Sydney Airport



Scott Charlton

I'm Scott Charlton, CEO of Sydney Airport, and I'm excited to share our very first community newsletter with you.

For 105 years, Sydney Airport has served as Australia's gateway, playing an essential role for travellers and our local communities.

We understand that our operations impact those around us, and we're committed to keeping you informed about everything happening at the airport—from safety measures and aircraft emissions to noise management and new developments.

In this edition you can read more about the economic benefits of aviation, our first local school tour, a new system that can detect turbulence, a spotlight on an Inner West local and more!

This newsletter marks the beginning of a new conversation, and we want to hear from you.

Your feedback will guide us in shaping and enhancing our future communications to better reflect what matters to you.

We hope you enjoy this edition, and if you'd like to receive future newsletters digitally, scan the QR code on the back.

Scott Charlton
CEO, Sydney Airport

Around 33,000 people work at Sydney Airport every day, which will grow to nearly 45,000 by 2045. Around 66% of airport workers live within 15km of Sydney Airport.*



News and insights



New system detects turbulence before take-off and landing

Sydney Airport has launched a new system to enhance safety and efficiency during aircraft operations.

This state-of-the-art technology, called a Light Detection and Ranging System (LIDAR) is proudly an Australian-first.

It provides real-time alerts on hazardous wind conditions to pilots and air traffic control every 10 seconds.

The LIDAR system was developed in collaboration with key aviation and meteorological partners and is now fully operational.



Bringing Country back to wetlands

This year Sydney Airport continued its partnership with Wildflower to complete additional bush regeneration works at Sydney Airport.

Wildflower is an Indigenous-led not-for-profit social enterprise specialising in premium sustainable horticulture, landscape and ecology services.

The organisation provides culturally safe, meaningful employment to First Nations people, many of whom face significant and complex barriers to employment.



Emergency exercise tests airport's resilience

Practice makes perfect. Air travel has never been safer but keeping it that way requires practicing for worst case scenarios.

That's what happened when 11 agencies and 200 people from across Sydney Airport came to the 'rescue' recently during a simulated flight disaster, involving a flight arriving with 150 passengers which crashed on landing.

The team sprang into action to rescue and evacuate, putting their emergency training to good use.

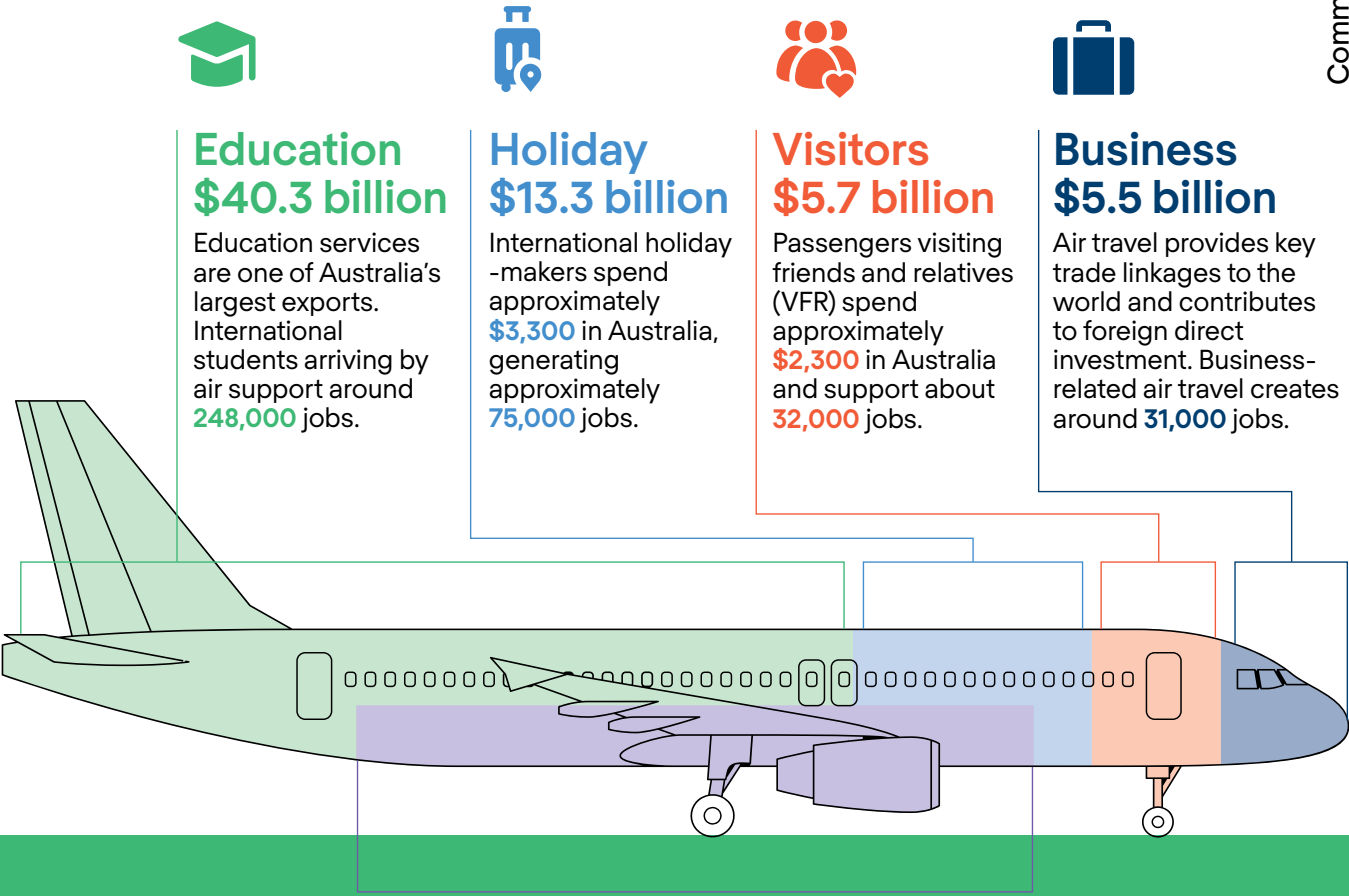
Scan to read these stories and more or visit sydneyairport.com.au/community



Did you know?

International aviation contributes \$100 billion to the Australian economy.

At Sydney Airport, a typical daily international service contributes **\$172 million** in value and supports an estimated **1,100** jobs. An A380 contributes up to **\$330 million** in value and supports more than **2,000** jobs.

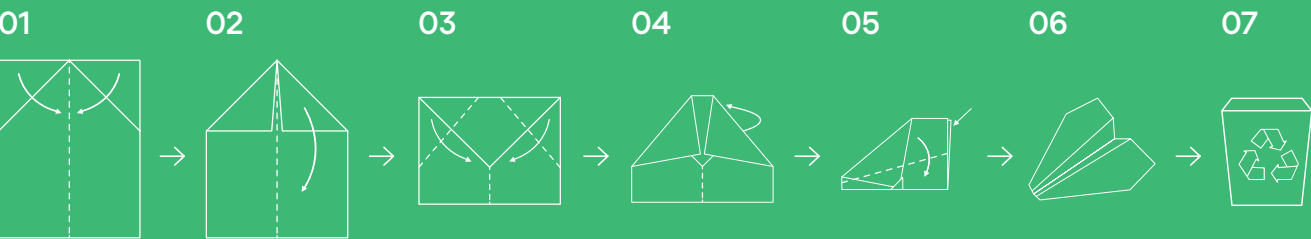


Fast facts at Sydney Airport

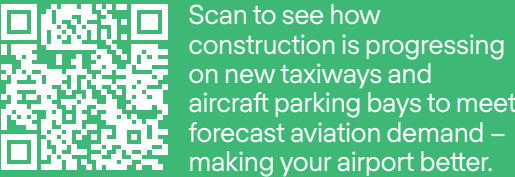


Let's fly away

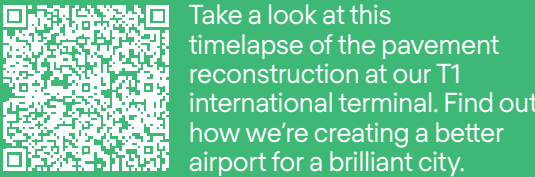
CREATE YOUR VERY OWN PAPER PLANE



International aviation supports around 515,000 jobs.



Scan to see how construction is progressing on new taxiways and aircraft parking bays to meet forecast aviation demand – making your airport better.



Take a look at this timelapse of the pavement reconstruction at our T1 international terminal. Find out how we're creating a better airport for a brilliant city.