

# Guidance for reporting to the Global Covenant of Mayors (GCoM) through CDP-ICLEI Track

---

2026



## Table of contents

<b>A: FAQ about the Global Covenant of Mayors (GCoM) and the Common Reporting Framework (CRF)</b>	<b>2</b>
<u>What is the Global Covenant of Mayors for Climate &amp; Energy?.....</u>	2
<u>How can my city commit to the GCoM? Formalizing your expression of interest.....</u>	3
<u>What are GCoM badges?.....</u>	4
<u>New levels of reporting: Simplified and Complete.....</u>	5
<u>How can I report to the Energy Access and Poverty Pillar?.....</u>	5
<b>B: FAQ about reporting to the GCoM through the CDP-ICLEI Track</b>	<b>7</b>
<u>How does CDP-ICLEI Track act as an official reporting platform?.....</u>	7
<b>C: FAQ on technical support</b>	<b>8</b>
<u>How can I identify GCoM specific questions/columns?.....</u>	<b>8</b>
<u>How can I report a compliant CRF emissions inventory?.....</u>	9
<u>Active Regional Variations to the requirements of the CRF.....</u>	10
<u>How often do cities have to report data to GCoM?.....</u>	11
<u>Who should I contact for support throughout the reporting and validation process?.....</u>	12
<u>Annex I- Figure A. How to report to the EAPP ‘Assessment’ through CDP-ICLEI Track: Step by step.....</u>	15
<u>Annex I- Figure B. How to report to the EAPP ‘Target’ through CDP-ICLEI Track: Step by step.....</u>	16
<u>Annex II- Figure C. Simplified vs Complete Level Reporting Checklist.....</u>	18

## What is the Global Covenant of Mayors for Climate & Energy?

The Global Covenant of Mayors for Climate & Energy (GCoM) is the largest alliance for city climate leadership, uniting a global coalition of more than 14,000 cities and local governments who share a long-term vision of supporting voluntary action to combat climate change and moving towards a resilient and low-emission society. Led today by UN Secretary-General Special Envoy on Climate Ambition and Solutions Michael R. Bloomberg, and Teresa Ribera, Executive Vice-President of the European Commission for Clean, Just and Competitive Transition, the coalition comprises cities across 6 continents and 150 countries, representing over 1.1 billion people – or more than 13% of the global population. Local governments committed to GCoM pledge to implement policies and undertake measures to: (i) reduce/limit greenhouse gas emissions, (ii) prepare for the impacts of climate change, (iii) increase access to sustainable energy, and (iv) track progress toward these objectives. In addition, GCoM cities connect and exchange knowledge and ideas, supported by relevant regional stakeholders.

## How can my city commit to GCoM? Formalizing your expression of interest

### For new GCoM signatories:

1. **Committing:** Cities commit to GCoM by having an appropriately mandated official (e.g., Mayor, City Council) signing a Letter of Commitment and send it to their Regional/National covenant's helpdesk.

A global commitment letter [template is available](#). Some regions/countries have developed tailored templates for their letters, in line with the GCoM principles but adjusted to regional/national context. Wherever a regional/national template exists, it should be the version to be used by all the signatories from that region/country. All letters/templates are available for download on the [GCoM website](#) upon selection of the country.

2. **Reporting:** Once a city is committed, they can enter CDP-ICLEI Track and start reporting to GCoM. If your questionnaire does not show the relevant GCoM questions or you are unsure if you are seeing the correct view, please contact your regional CDP office and we will be happy to support you. Please note that without officially committing, the city is not classified as a GCoM city, and their response will not be reviewed.

**IMPORTANT NOTE: Cities reporting to GCoM must report publicly. Submitting non-publicly will mean you are not compliant with your membership requirements and you will not be eligible for GCoM validation and badging.**

3. **Validation and results:** Once the city has completed the *commitment and reporting steps*, CDP and GCoM will validate the city's response against the [Common Reporting Framework](#) reviewing the data compliant with the GCoM badges.

## For already committed signatories:

Cities do not need to resubmit their commitment letter if there has been a change in government or mayor since the original commitment was made. Cities can go to the global [GCoM website](#) to check their commitment status in case they are not sure about their commitment. When a city does wish to sign a new commitment in the event of any changes, they must download and sign the relevant commitment letter from the [Global Covenant of Mayors website](#) and return this to the Global secretariat or their regional helpdesk using the contact details provided in the [support section](#) at the end of this document.

## EU Covenant of Mayors

Cities that have signed the 2020 EU Covenant commitments need to recommit to the 2050 commitments to remain actively engaged in the initiative. If your city is in this situation, please follow the steps outlined in the [EU Covenant website](#). You can check your city's commitment status in the [signatories webpage](#). Such rules apply to the following countries: EU-27 and EEA-EFTA.

## What are GCoM badges?

The GCoM has defined a series of badges to recognise the effort and progress made by signatories throughout their GCoM journey. The badges are structured around the three pillars of the GCoM: Mitigation, Adaptation, and Energy Access and Poverty. Each badge is further broken down into three phases, shown as progress bars in the Figure 1.

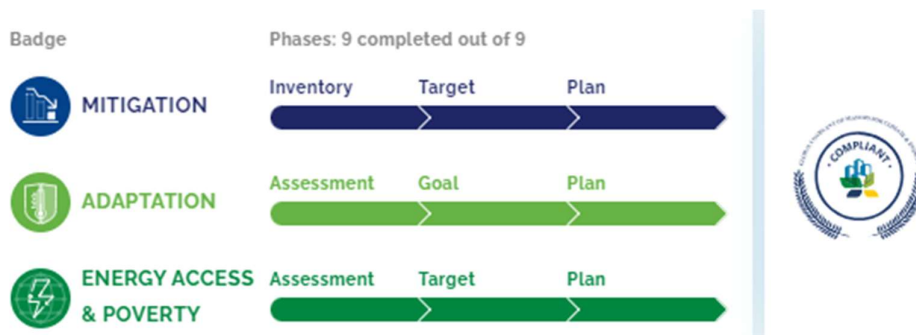


Figure 1: Pillars and phases of the GCoM Common Reporting Framework, as shown on the GCoM website.

The badges are issued according to the information reported by GCoM cities. Each city's progress is visually recognised on their online profile ([city dashboard](#)) on the GCoM website. Each badge lights up as soon as a city achieves compliance in a phase.

For more information on GCoM badges, please visit [Journey - Global Covenant of Mayors](#).

For pillar/badge-specific guidance please go to the "[How can I identify GCoM specific questions/columns](#)" section below.

## New levels of reporting: Simplified and Complete

With the updated CRF, GCoM has introduced two reporting levels to accommodate for the varying needs and capacities of each GCoM committed city. The Simplified level contains fewer mandatory requirements than the Complete level, although the majority of requirements are still the same between the two levels.

Cities are free to choose which CRF level to report to by selecting the desired level in **question 1.2 of the 2026 questionnaire “*Select which Common Reporting Framework level you are reporting to*”**.

It is important to note that badges are awarded independent of the reporting level that cities choose. All cities are eligible to achieve the mitigation, adaptation and energy access and poverty of the CRF.

**Please note that question 1.2 is an expression of interest. The questionnaire will show all relevant GCoM questions regardless of the reporting level selected.**

In the annex of this document, you will find a [checklist](#) on what are the requirements of the Simplified vs Complete reporting levels, and the CDP-ICLEI Track questions that you need to report to in order to achieve compliance and showcase your actions.

## How can I report to the Energy Access and Poverty Pillar?

In November 2022, GCoM launched the new Energy Access and Poverty Pillar (EAPP) of the CRF. As of 2023, GCoM signatories are now eligible for a third ‘Energy Access & Poverty’ badge, in addition to the existing ‘Mitigation’ and ‘Adaptation’ badges. GCoM cities shall report against the attribute(s) (affordability, security, and sustainability) their GCoM region has selected (to confirm which attribute your region has selected, please consult the Annex, page 18). The 2026 Cities Questionnaire is fully aligned with the EAPP.

GCoM signatories that have been committed to GCoM prior to the activation date of the EAPP (January 2023) will have 2 years from the activation date to report against the EAPP Assessment and Target, and 3 years to submit an EAPP Plan. Thus for 2026, GCoM cities that have committed to GCoM before January 2023 must report against the EAPP Assessment, Target and Plan badges. GCoM signatories committing to GCoM after the EAPP activation date will have 2 years to report against the EAPP Assessment and Target and 3 years to submit an EAPP plan, from the date that they committed to GCoM. If you have further questions on reporting timelines, please visit the [‘How often do cities have to report data to GCoM!’](#) section of this document.

GCoM jurisdictions are required to report to at least one indicator from their GCoM Regional/National Covenant’s chosen energy attribute. These attributes are:

- Secure energy
- Sustainable energy

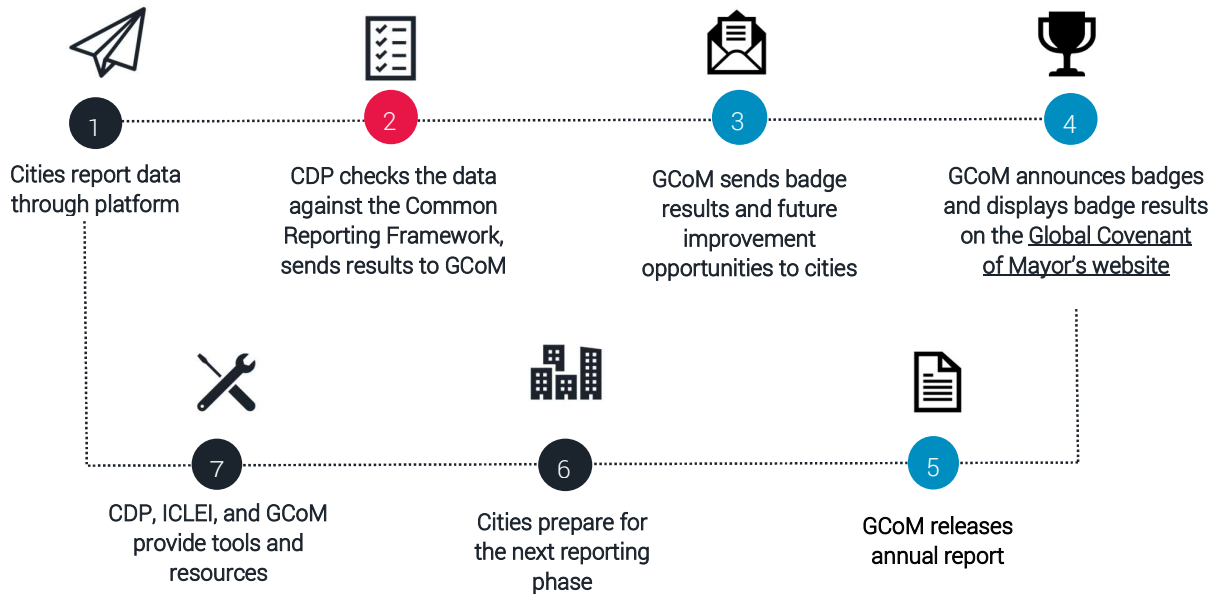
- Affordable energy

In the Annex of this document-'How to report to the EAPP through CDP-ICLEI Track Step by step', you can find a table that indicates the different attributes, their related indicators (of which at least one must be reported to), and the CDP-ICLEI Track questions that collect data on that indicator. Please check which questions you must report to based on the attribute selected for your region. To check the latest information please visit the Common Reporting Framework found on GCoM's website.

## How does CDP-ICLEI Track act as an official reporting platform?

CDP-ICLEI Track is a Reporting Platform for cities, states & regions to measure, manage and disclose their environmental data. CDP-ICLEI Track has partnered with multiple campaigns and initiatives, offering one consolidated and aligned questionnaire. Besides reporting to GCoM, cities can voluntarily participate to other projects or initiatives hosted by CDP-ICLEI Track (such as the Science-Based Targets and WWF’s One Planet City Challenge) without duplicating the reporting effort.

### GCoM reporting journey through CDP-ICLEI Track



\*Note: In 2026, GCoM will now directly send validation results and future improvement opportunities feedback to cities. If you have any questions, please contact [info@globalcovenantofmayors.org](mailto:info@globalcovenantofmayors.org)

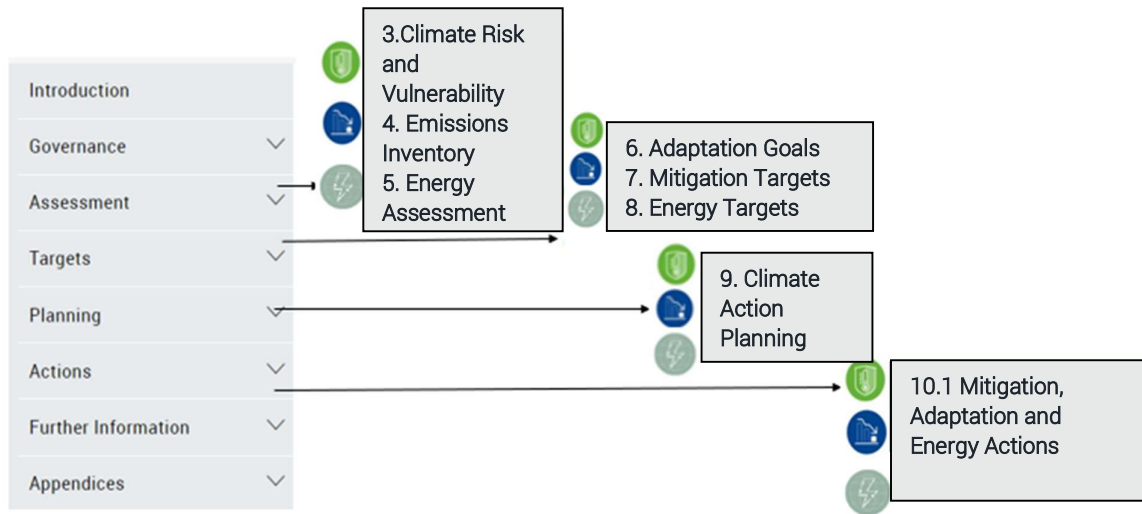
Once a city has submitted their data through CDP-ICLEI Track, CDP will validate the city’s report against the requirements of the CRF and send the results to GCoM.

GCoM will send cities an email with their badge results including comprehensive feedback and recommendations for badge improvement within the reporting year. Compliance is achieved once all the associated requirements of the CRF have been met.

## How can I identify GCoM specific questions/columns?

Cities participating in the Global Covenant of Mayors will be presented with all CRF aligned questions and columns independent of the questionnaire pathway selected. Please refer to the [2026 CStaR Questionnaire and Guidance](#) for further information.

### 2026 CStaR Questionnaire GCoM CRF alignment



CRF mandatory data points are indicated with the “^” symbol for the Simplified level and “^^” for the complementary complete level datapoints. This allows cities to identify mandatory indicators and avoid common mistakes easily. Cities must answer all mandatory data points appropriately to achieve full compliance.

For question specific guidance, please refer to the [2026 Cities Questionnaire Reporting Guidance](#).

### Identifying GCoM mandatory questions

**3.1.1**  
Provide information on and an attachment (in spreadsheet format)/ direct link to your main community-wide GHG emissions inventory.

This question is presented if “Yes” is selected in response to 3.1. If you are a C40 member city, please make sure to answer this question in detail as this data is also used to assess against C40’s membership requirements, the C40 Leadership Standards.

IMPORTANT: File attachments do not copy forward from the previous year so remember to reupload a new attachment. In addition, make sure to confirm the attachment in column 3 (Status of main community-wide inventory attachment).

Main community-wide emissions inventory attachment (spreadsheet) <sup>^^</sup>

Primary source of emission factor <sup>^^</sup>

- Default IPCC emission factors
- Emission Factor Database (EFDDB)
- LCA (Life Cycle Assessment) emission factors
- National/sub-national emission factors, please specify
- Local emission factors, please specify
- Do not know
- Other, please specify

Related Frameworks, Projects, and Initiatives

- GCoM: Mitigation Pillar

Complete Level Only

Simplified and Complete Level

Relevant GCoM Badge

## How can I report a compliant CRF emissions inventory?

GCoM signatories should report their emission inventories through questions 4.1.1 and 4.1.2. CRF mandatory data points are indicated with the “**^**” symbol for the Simplified level and “**^^**” for the complementary complete level datapoints. These should be answered by **either a value other than 0 or a valid notation key and its justification.**

Sectors and sub-sectors	Simplified Level: Direct emissions	Complete Level: Direct emissions	Simplified Level: Indirect emissions	Complete Level: Indirect emissions
<b>Stationary energy</b>				
Residential buildings^^	Recommended	Mandatory	Recommended	Mandatory
Commercial building and facilities^^	Recommended	Mandatory	Recommended	Mandatory
Institutional buildings and facilities^^	Recommended	Mandatory	Recommended	Mandatory
Industrial buildings and facilities^^	Recommended	Mandatory	Recommended	Mandatory
Agriculture	Optional	Recommended	Optional	Recommended
Fugitive emissions^^	Optional	Mandatory	Optional	Recommended
Total Stationary energy emissions^	Mandatory	Mandatory	Mandatory	Mandatory
<b>Transportation</b>				
On-road^^	Recommended	Mandatory	Recommended	Mandatory
Rail^^	Recommended	Mandatory	Recommended	Mandatory
Waterborne navigation^^	Recommended	Mandatory	Recommended	Mandatory
Aviation^^	Recommended	Mandatory	Recommended	Mandatory
Off-road^^	Recommended	Mandatory	Recommended	Mandatory
Total Transportation emissions^	Mandatory	Mandatory	Mandatory	Mandatory
<b>Waste</b>				
Solid waste disposal^^	Recommended	Mandatory	Recommended	Recommended
Biological treatment^^	Recommended	Mandatory	Recommended	Recommended
Incineration and open burning^^	Recommended	Mandatory	Recommended	Recommended
Wastewater treatment and discharge^^	Recommended	Mandatory	Recommended	Recommended
Total waste emissions^^	Optional	Mandatory	Optional	Recommended
ALL IPPU	Optional	Optional	Optional	Optional
ALL AFOLU	Optional	Optional	Optional	Optional
<b>Energy Generation</b>				
Electricity-only generation^^	Optional	Mandatory	Recommended	Recommended

CHP generation^^	Optional	Mandatory	Recommended	Recommended
Heat/cold generation^^	Optional	Mandatory	Recommended	Recommended
Local renewable generation	Optional	Optional	Recommended	Recommended
Total generation of grid-supplied energy^^	Optional	Mandatory	Recommended	Recommended

**Common mistakes when reporting emissions for the Complete level:**

1. **Reporting “0”** in mandatory emissions is **not compliant**. Please use notation key NO (Not Occurring) when relevant emission does not exist or are negligible in the reporting boundary.
2. The use of “NE (Not Estimated)” in mandatory subsectors is **NOT** compliant with the GCoM inventory badge. This notation is designed ONLY to track future improvement potentials. If the emission is not estimated because the emission from this subsector is very scarce or rare, please use “NO” (Not Occurring). For example, suppose emissions from water-born transport is a minor source within city A. In that case, the city should use notation key NO for the direct and indirect water-born transport emissions.
3. If GHG emissions **are estimated and presented in another category in the same inventory, please use “IE” (included elsewhere)** along with a justification.
4. Failing to justify when using Notation Key IE (**included elsewhere**) is not compliant.

**Active Regional Variations to the requirements of the CRF**

GCoM Regional/National Covenants have the authority to propose and implement regional variations to the mandatory requirements of the CRF.

Cities should be careful to comply with regional variations to report all mandatory requirements and ensure badge compliance. Below is a list of active regional variations as of 2/05/2026 when this guidance document was finalised.

**Covenant of Mayors Europe:**

CRF level impacted	Module	Question number	Regional Variation
Simplified	Climate Risk and Vulnerability Assessment	3.3	EU signatories must report to all datapoints in question 3.3 and identify and describe the most significant factors impacting the jurisdiction’s ability to adapt to climate change, in

			addition to questions 3.1, 3.1.1 and 3.2
Simplified and Complete	Emissions Inventory	4.1.2	Reporting data for the subsector “Local Renewable Generation” is <b>mandatory</b> for EU signatories to be compliant with this badge phase.
Simplified and Complete	Mitigation Target	7.1.1	EU signatories must report at least one mitigation target that is a mid-term absolute emissions reduction target

**GCoM Japan:**

Simplified and Complete	Energy Target	8.1	Japanese cities already have a highly advanced level of energy access, as national legislation mandates universal energy provision. Therefore, Japanese signatories that report a specific energy access target do not need to report a separate general target and will be considered as implicitly meeting the general target requirement at 100% access
-------------------------	---------------	-----	--

**How often do cities have to report data to GCoM?**

**Overall reporting timelines**

The CRF includes timelines for different elements of reporting. The following table shows the overall reporting time after joining GCoM. For more information please visit the CRF, “[Overall reporting timelines](#)”.

Reporting Elements	Commit to join GCoM (Year 0)	Years 1 and 2	Year 3	Year 4	Year 5
Baseline GHG Emissions Inventory	Submit by year 2 at the latest				
Risk and Vulnerability Assessment	Submit by year 2 at the latest				
Energy Access and Poverty Assessment	Submit by year 2 at the latest				

Targets and goals (mitigation, adaptation, and EAPP)	Submit by year 2 at the latest			
Climate action plan(s) (mitigation, adaptation, EAPP, or integrated)	Submit by year 3 at the latest <sup>1</sup>			
Progress report				Submit every two years after submitting the corresponding climate action plan

### Monitoring reports (inventory)

Once a city achieves compliance for their inventory, they have reached the monitoring phase. From then on, they must report at least every four years on their emissions.

When reporting an inventory, two dates are of significance:

- The **accounting year** of a GHG inventory is the year in which the data (i.e. activity data and emissions factors) used to calculate figures was collected.
- The **reporting year** of a GHG inventory is the year in which the full inventory itself is submitted (i.e. reported) to CDP-ICLEI Track.

If there haven't been significant changes in GHG emissions since the last inventory, the city can simply update their previous inventory data. This may include re-calculating those subsectors that have changed, or updating the calculations based on any changes in the jurisdiction (e.g. in population).

Inventory accounting year	Inventory reporting year			
	2023	2024	2025	2026
2019				
2020				
2021				
2022				
2023				
2024				
2025				

Inventory is valid for this reporting year

### Who should I contact for support throughout the reporting process?

CDP, ICLEI and GCoM are very happy to support cities throughout the reporting process. Some offices may be able to offer more targeted support depending on your query.

Please find all teams that offer support and their focus area in the table below. If you are not sure what office to contact, please reach out to your relevant CDP office, and we will be happy to help you.

<sup>1</sup> Please note that in the EU Covenant of Mayors, cities commit to submitting a Sustainable Energy and Climate Action Plan (SECAP) by year 2. Thereafter, they are required to submit a monitoring report every 2 years and a Monitoring Emission Inventory (MEI) every 4 years.

For questions on:

- **Reporting** to CDP-ICLEI Track
- **Key dates** for maximising benefits
- **Any other general questions**

**CDP has made a change to the way we provide support to cities.**

Using our new [Help Center](#), you will be able to raise queries and search for support materials in the Knowledge Management area, making it easier to find the information you need. The Help Center has replaced [cities@cdp.net](mailto:cities@cdp.net). Please update your records accordingly and direct your colleagues towards the [Help Center](#) when raising enquiries with CDP. **You can also continue to contact CDP regional teams directly.**

For questions on:

- GCoM initiative/ on Reporting Framework
- Validation feedback and results
- Operational and technical questions related to GCoM.
- Information on GCoM activities, events, resources, etc
- GCoM commitment and progress in a region/country
- Access to tools, capacity building and technical assistance

Canada, USA, the Caribbean, and Central Asia  
Email: [info@globalcovenantofmayors.org](mailto:info@globalcovenantofmayors.org)

Latin America  
Email: [info@pactodealcaldes-la.org](mailto:info@pactodealcaldes-la.org)

European Union, Western Europe, and Eastern Europe (Armenia, Azerbaijan, Georgia, Moldova, Ukraine)  
Email: [info@eumayors.eu](mailto:info@eumayors.eu)

Japan helpdesk  
Email: [info@covenantofmayors-japan.jp](mailto:info@covenantofmayors-japan.jp)

Middle East and North Africa  
Email: [helpdesk@com-med.org](mailto:helpdesk@com-med.org)

Oceania  
Email: [oceania@iclei.org](mailto:oceania@iclei.org)

Korea  
Email: [seulji.jeon@iclei.org](mailto:seulji.jeon@iclei.org)

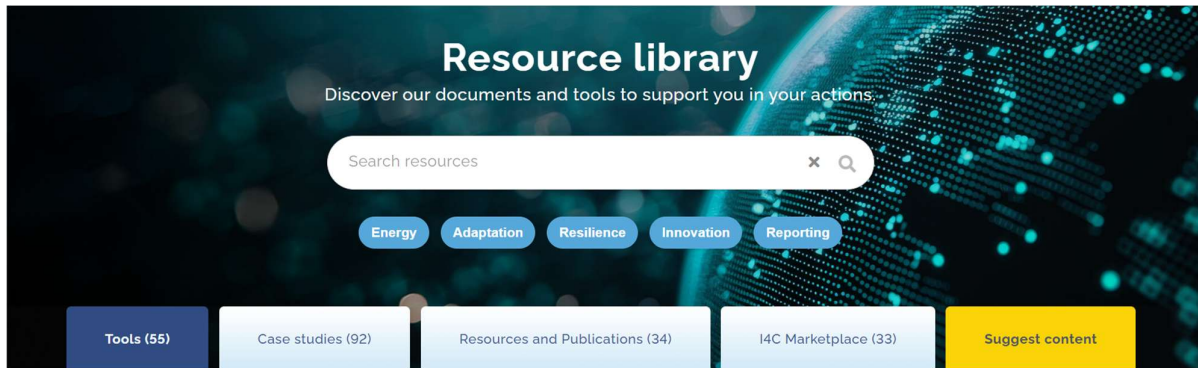
South Asia helpdesk  
Email: [keshav.jha@iclei.org](mailto:keshav.jha@iclei.org)

Southeast Asia  
Email: [secretariat@asean-mayors.eu](mailto:secretariat@asean-mayors.eu)

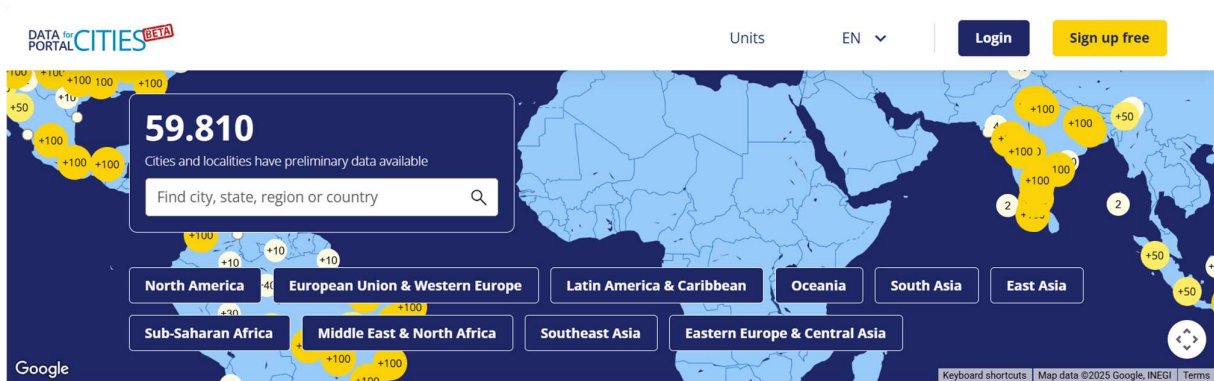
Sub-Saharan Africa  
Email: [helpdesk@comssa.org](mailto:helpdesk@comssa.org)

## Resources

You can visit the GCoM [Resource Library](#) where you will find fit-for-purpose applications and other interactive resources (tools) that can help cities and local governments progress on their climate action journeys.



Additionally, the [Data Portal for Cities](#), is the **nations ideal solution for managing and distributing city-specific data**. Data Portal for Cities is an open data platform that helps communities fill critical information gaps by providing estimates of previously unavailable data drawn from national and regional sources.



## Annex I

**Figure A. How to report to the EAPP “Energy assessment badge”: Step by step**

EAPP badge phase	Attribute	CRF requirement	CDP-ICLEI Track Question Number
Assessment General principles	Assessment general principle	Local governments shall prepare and submit an energy access and energy poverty assessment within two years after committing to the GCoM.  The assessment shall analyse the energy access and energy poverty conditions of the municipality considering three key energy attributes: · Secure energy · Sustainable energy · Affordable energy	5.1
	Assessment general principle	The energy access and energy poverty assessment shall provide information on the energy attribute(s) deemed most relevant by each Regional and National Covenant. Region- and country-specific attributes will be made available through regionalized versions of the Common Reporting Framework and communicated by Regional/National Covenant helpdesks.  The assessment shall include at least one mandatory indicator for each energy attribute deemed relevant by the local government’s respective Regional/National Covenant.	See below
<p><b>Sustainable energy attribute: The GCoM Regional/ National covenants of Japan, Latin America, Middle East and North Africa, the Republic of Korea, China, and East Asia require cities to report to at least one indicator of this attribute.</b></p>			
Assessment	Sustainable energy	Energy consumption from renewable energy sources (Sustainable Energy indicator)	5.1
		Source mix of thermal energy (heating and cooling) consumed within local boundary (Sustainable Energy indicator)	5.1 and 5.1.2

		Installed capacity of renewable energy sources within local boundary (Sustainable Energy indicator)	5.1 and 5.1.3
		Total energy generated from renewable energy sources within local boundary (Sustainable Energy indicator)	5.1 and 5.1.3
		Percentage of households within the municipality with access to clean cooking fuels and technologies (Sustainable Energy indicator)	5.2
<b>Affordable energy attribute: The GCoM Regional/ National covenants of Eastern Europe &amp; Central Asia, European Union &amp; Western Europe, North America, the Republic of Korea, and Oceania require cities to report to this attribute.</b>			
Assessment	Affordable energy attribute	Percentage of households or population within the city boundary that spending up to X% of income on energy service (Affordable Energy indicator)	5.3
<b>Secure energy attribute: The GCoM Regional/ National covenants of South Asia, Southeast Asia, Sub-Saharan Africa, and East Asia require cities to report to this attribute.</b>			
		Percentage of municipality population or households with access to electricity (Secure Energy indicator)	5.4
Assessment	Secure Energy	Average duration of available electricity (Secure Energy indicator)	5.4
		Average yearly energy consumption per capita (Secure Energy indicator)	5.4

**Figure B. How to report to the EAPP 'Target' badge: Step by step**

<b>General Target (All Attributes)</b>
Local governments shall adopt a target for a quantified relative increase of energy access and/or alleviation of energy poverty towards universal access to energy in alignment with SDG 7. The target shall define the estimated percentage increase of energy access and/or decrease in energy poverty in 2030 compared to their selected base year.

In addition, local governments shall set **at least one specific target, separate to the general target**, that addresses energy access and alleviates energy poverty **from the regionally selected energy attribute**. Local governments should select their target(s) from the list of targets reported below.

Regional Attribute	Region	Related Specific Targets
<b>Sustainability</b>	Japan	<ol style="list-style-type: none"> <li>1. Increase the installed capacity of renewable energy sources (RES) within local boundary.</li> <li>2. Increase total energy generated from RES within the local boundary</li> <li>3. Increase energy consumption from RES</li> <li>4. Increase the households within the municipality with access to clean cooking fuels and technologies</li> <li>5. "Improve the greenness" of the source mix of thermal energy (heating and cooling) consumed in your city</li> </ol>
	Latin America	
	Middle East & North Africa	
	Republic of Korea	
	China	
	East Asia	
<b>Security</b>	South Asia	<ol style="list-style-type: none"> <li>1. Increase average duration of available electricity by 2030 in relation to their base year</li> <li>2. Increase the percentage of population or households with access to electricity by 2030 in relation to base year</li> <li>3. "Improve" the average yearly energy consumption per capita (without affecting the level and quality of energy services used)</li> </ol>
	Southeast Asia	
	Sub-Saharan Africa	
	East Asia	
<b>Affordability</b>	Eastern Europe & Central Asia	<ol style="list-style-type: none"> <li>1. Reduce percentage of households or population within the city boundary that face energy poverty</li> <li>2. Increase energy efficiency of buildings</li> </ol>
	Western Europe & European Union	
	North America	
	Republic of Korea	
	Oceania	

## Annex II

The common reporting framework requirements in the CDP-ICLEI Track questionnaire

Badge Phase	2026 Question Number	Question	Mandatory for Simplified	Mandatory for Complete
Adaptation RVA	3.1	Has the city reported an RVA within 2 years after committing to GCoM? (City must answer “Yes” to question 3.1 and answer 3.1.1 appropriately)	Mandatory	Mandatory
Adaptation RVA	3.1.1	Has the city attached an accessible and compliant RVA in question 3.1.1?	Mandatory	Mandatory
Adaptation RVA	3.1.1	Has the city indicated the boundary of their Risk and Vulnerability Assessment (RVA)? If this is different from their city boundary (eg. smaller, larger), has a justification been provided to explain the exclusion or expansion area?	Mandatory	Mandatory
Adaptation RVA	3.2	Has the city reported at least one hazard with all mandatory aspects listed below: <ul style="list-style-type: none"> <li>- Climate-related hazards</li> <li>- Sectors most exposed</li> <li>- Current probability</li> <li>- Current magnitude of impact of hazard</li> </ul>	Mandatory	Mandatory
Adaptation Goal	6.1/6.1.1	Has the city reported an adaptation goal within 2 years after committing to GCoM (question 6.1) and reported all of the following data points (question 6.1.1):	Mandatory	Mandatory

		<ul style="list-style-type: none"> <li>- Adaptation goal (A short summary of the goal)</li> <li>- Climate hazards that goal addresses</li> <li>- Base year of goal</li> <li>- Target year of goal (must be in the future)</li> </ul>		
<b>Adaptation Plan</b>	<b>9.1</b>	Has the city reported an adaptation plan within 3 years after committing to GCoM? (Must report "Yes" in question 9.1)	Mandatory	Mandatory
<b>Adaptation Plan</b>	<b>9.1.1</b>	Is the attached or linked plan the correct document and is it available?	Mandatory	Mandatory
<b>Adaptation Plan</b>	<b>9.1.1</b>	Has the city included all mandatory data points about their plan: <ul style="list-style-type: none"> <li>-Processes for monitoring evaluation</li> <li>-Name of local government(s) which formally adopted the plan</li> <li>-Year of formal approval</li> </ul>	Mandatory	Mandatory
<b>Adaptation Plan</b>	<b>10.1</b>	Has the city reported at least one adaptation action with all mandatory data points listed below: <ul style="list-style-type: none"> <li>-Primary climate focus of action (adaptation)</li> <li>- High-impact action (selection of type)</li> <li>- Inclusion in climate action plan and/or jurisdiction development/master plan</li> </ul>	Mandatory	Mandatory + -two actions - Action description and web link to further information

Mitigation Inventory	4.1	Has the city reported a city-wide GHG emissions inventory within 2 years after committing to GCoM and updated the inventory every 4 years after the first submission? (must answer "Yes" to question 4.1)	Mandatory	Mandatory
Mitigation Inventory	4.1.1	Has the city attached or linked a complete document for manual validation?	Mandatory	Mandatory
Mitigation Inventory	4.1.1	Has the city reported the year for which the inventory was conducted?	Mandatory	Mandatory
Mitigation Inventory	4.1.1	Has the city indicated the boundary of the emissions inventory and indicated the population covered?	Mandatory	Mandatory
Mitigation Inventory	4.1.1	Has the inventory accounted for carbon dioxide (CO <sub>2</sub> )?	Mandatory	Mandatory + at least 3 mandatory gases (carbon dioxide CO <sub>2</sub> , methane CH <sub>4</sub> and nitrous oxide N <sub>2</sub> O) in aggregated or disaggregated format?
Mitigation Inventory	4.1.2	Has the city reported all mandatory emissions values with either a number or a notation key? Please remember that:  - Reporting "0" or leaving blank mandatory emissions is not compliant.	Mandatory (different mandatory subsectors)	Mandatory (all subsectors)

		<p>Please use notation key NO (Not Occurring) when relevant emission does not exist or are negligible in the reporting boundary.</p> <ul style="list-style-type: none"> <li>- The use of "NE (Not Estimated)" in mandatory subsectors is not compliant. This notation is designed ONLY to track future improvement potential. If the emission is not estimated because the emission from this subsector is very scarce or rare, please use "NO" (Not Occurring).</li> </ul>		
<b>Mitigation Inventory</b>	<b>4.1.2</b>	Has the city provided a brief explanation of where those emissions are included, when using the notation key "IE (Included Elsewhere)"? Please note that "IE" should only be used for GHG emissions presented in another category in the same inventory.	Recommended	Mandatory
<b>Mitigation Inventory</b>	<b>4.1.1</b>	Has the city reported activity data for all sources of emissions? (in inventory)	Recommended	Mandatory
<b>Mitigation Inventory</b>	<b>4.1.1</b>	Has the city reported emission factors for all sources of emissions? (in inventory)	Recommended	Mandatory
<b>Mitigation Target</b>	<b>7.1</b>	Has the city reported a city-wide GHG	Mandatory	Mandatory

		emissions reduction target within 2 years after committing to GCoM? (must answer "Yes" to question 7.1)		
Mitigation Target	7.1.1	Has the city indicated the boundary of the mitigation target reported?	Mandatory	Mandatory
Mitigation Target	7.1.1	Is the target boundary consistent with all emission sources included in the GHG emissions inventory, with the possibility to exclude sources that are not controlled by the local government?	Mandatory	Mandatory
Mitigation Target	7.1.1	Has the city reported a target <b>at least as ambitious</b> as their NDC?	Mandatory	Mandatory
<i>(City must report 1 compliant target, mandatory fields vary depending on the type of target reported)</i>				
Mitigation Target	7.1.1	Has the city reported all details of their target (not all details are relevant for all target types)  <ul style="list-style-type: none"> <li>-Base year</li> <li>-Covered emissions in base year</li> <li>-Target year (must be in the future)</li> <li>-Percentage of emissions reduction</li> <li>- Net emissions in target year</li> <li>- Emissions intensity figure in base year</li> <li>- BAU methodology explanation on the "Please explain" field</li> </ul>	Mandatory	Mandatory
Mitigation Target	7.1.1 & 7.1.2	Has the city indicated their target will be	Mandatory	Mandatory

		<p>achieved using carbon credits, including the details on the amount of credits used? The CRF only accepts usage of carbon credits (transferable emissions) where target ambition without carbon credits exceeds the unconditional components of the NDC.</p> <p>(If reporting a Net Zero target, please report if residual emissions are expected and if there are plans to offset them in the net zero target year in 7.1.2)</p>		
<b>Mitigation Plan</b>	<b>9.1</b>	Has the city reported a mitigation plan within 3 years after committing to GCoM? (Must report "Yes" in question 9.1)	Mandatory	Mandatory
<b>Mitigation Plan</b>	<b>9.1.1</b>	Is the attached or linked plan the correct document and is it available?	Mandatory	Mandatory
<b>Mitigation Plan</b>	<b>9.1.1</b>	<p>Has the city included all mandatory data points about their plan:</p> <ul style="list-style-type: none"> <li>-Processes for monitoring evaluation</li> <li>-Name of local government(s) which formally adopted the plan</li> <li>-Year of formal approval</li> </ul>	Mandatory	Mandatory
	<b>10.1</b>	Has the city reported at least one action with all mandatory data points listed below:	Mandatory	<p>Mandatory +</p> <p>Has the city reported at least two actions</p>

Mitigation Plan		<ul style="list-style-type: none"> <li>-Primary climate focus of action (mitigation)</li> <li>- High-impact action (selection of type)</li> <li>- Inclusion in climate action plan and/or jurisdiction development/master plan</li> </ul>		<p>with all mandatory data points listed below:</p> <ul style="list-style-type: none"> <li>- Action description and web link to further information</li> <li>- Inclusion in climate action plan and/or jurisdiction development/master plan</li> </ul> <p>And at least one of the following action impact indicators are reported (only for Complete Level):</p> <ul style="list-style-type: none"> <li>- Estimated emissions reduction (metric tonnes CO2e)</li> <li>- Energy saving (MWh)</li> <li>- Renewable energy production (MWh)</li> </ul>
EAPP Assessment	5.1	<p>Has the city reported an energy poverty and access assessment by reporting against the indicators of their region's selected energy attribute? If the city has an assessment in line with their regional attribute, they must select the type of assessment in question 5.1.</p>	Mandatory	Mandatory
EAPP Assessment	5.1,5.1.2,5.1.3,5.2	<b><i>(Sustainable Energy Attribute: Must report against at least one of the next 5 mandatory indicators)</i></b>		
EAPP Assessment	5.1	<p>Has the city provided the mandatory data for the indicator <b>Total energy consumption</b></p>	Mandatory	Mandatory

		<b>from renewable energy sources (MWh)?</b>		
EAPP Assessment	5.1.2	Has the city provided the mandatory data for the indicator ' <b>Source mix of thermal energy (heating and cooling) consumed within local boundary?</b> '	Mandatory	Mandatory
EAPP Assessment	5.1.3	Has the city provided the mandatory data for the indicator ' <b>Installed capacity of renewable energy sources within local boundary?</b> '	Mandatory	Mandatory
EAPP Assessment	5.1.3	Has the city provided the mandatory data for the indicator ' <b>Total energy generated from renewable energy source within local boundary?</b> '	Mandatory	Mandatory
EAPP Assessment	5.2	Has the city provided the mandatory data for the indicator ' <b>Percentage of households within the municipality with access to clean cooking fuels and technologies?</b> '	Mandatory	Mandatory
EAPP Assessment	5.3	<i>(Affordable Energy Attribute: Must report against the indicator below)</i>		
EAPP Assessment	5.3	Has the city provided the mandatory data for the indicator ' <b>Percentage of households or population within the city boundary that spend up to X% of income on energy service?</b> '	Mandatory	Mandatory

EAPP Assessment	5.4	<i>(Secure Energy Attribute: Must report against at least one of the following 3 indicators)</i>		
EAPP Assessment	5.4	Has the city provided the mandatory data for the indicator <b>'Percentage of municipality population or households with access to electricity'?</b>	Mandatory	Mandatory
EAPP Assessment	5.4	Has the city provided the mandatory data for the indicator <b>'Average duration of available electricity'?</b>	Mandatory	Mandatory
EAPP Assessment	5.4	Has the city provided the mandatory data for the indicator <b>'Average yearly energy consumption per capita'?</b>	Mandatory	Mandatory
EAPP Target	8.1	Has the city reported a general target that defines the estimated percentage increase of energy access and/or decrease in energy poverty in 2030 in line with their region's selected attribute? (Must be an acceptable target type, check guidance)	Mandatory	Mandatory
EAPP Target	8.1	Has the city reported all mandatory details of their general target?  -Target type -Metric numerator (must be Percentage (%)) -Base year -Metric value in base year	Mandatory	Mandatory

		-Target year (must be 2030 or earlier) -Metric value in target year		
<b>EAPP Target</b>	<b>8.1</b>	Has the city indicated the boundary of their general target?	Mandatory	Mandatory
<b>EAPP Target</b>	<b>8.1</b>	Has the city reported a specific target (separate to the general target) in line with their region's selected attribute? (See acceptable target types for each attribute in guidance)	Mandatory	Mandatory
<b>EAPP Target</b>	<b>8.1</b>	Has the city reported all details of their specific target? -Target type -Metric numerator (must be Percentage (%)) -Base year -Metric value in base year -Target year -Metric value in target year	Mandatory	Mandatory
<b>EAPP Target</b>	<b>8.1</b>	Has the city indicated the boundary of their specific target?	Mandatory	Mandatory
<b>EAPP Plan</b>	<b>9.1 and 9.1.1</b>	Has the city reported either an EAP standalone action plan or an integrated action plan addressing energy access and energy poverty and either adaptation and/or mitigation within 3 years after committing to GCoM?	Mandatory	Mandatory
		Has the city linked or attached a compliant	Mandatory	Mandatory

EAPP Plan	9.1.1	and accessible EAP-related plan?		
EAPP Plan	9.1.1	<p>Has the city reported all mandatory data points about their plan?</p> <ul style="list-style-type: none"> <li>-Processes for monitoring evaluation</li> <li>-Name of local government(s) which formally adopted the plan</li> <li>-Year of formal approval of plan</li> </ul>	Mandatory	Mandatory
EAPP Plan	10.1	<p>Has the city reported at least one action in 10.1 with all mandatory data points:</p> <ul style="list-style-type: none"> <li>-Primary climate focus of action</li> <li>-High-impact action (selection of action type)</li> <li>-Inclusion in climate action plan and/or jurisdiction development/master plan</li> <li>-Indication that the action contributes to the jurisdiction's energy access and energy poverty objectives</li> <li>-Select the related energy access and/or poverty indicator(s) for the actions, and indicate how they are impacted by the action (i.e. value increased or decreased)(see guidance)</li> </ul>	Mandatory	Mandatory