

PROJECT UPDATE

Lake Ralph Hall is a special place (a natural place, a quiet place, a hospitable place) both for people and for the environment, assuring a reliable water supply for generations to come.

2023 — A Year of Progress for Lake Ralph Hall



Clockwise from top left: roads and bridges, Leon Hurse Dam embankment, raw water pump station, pipeline, spillway

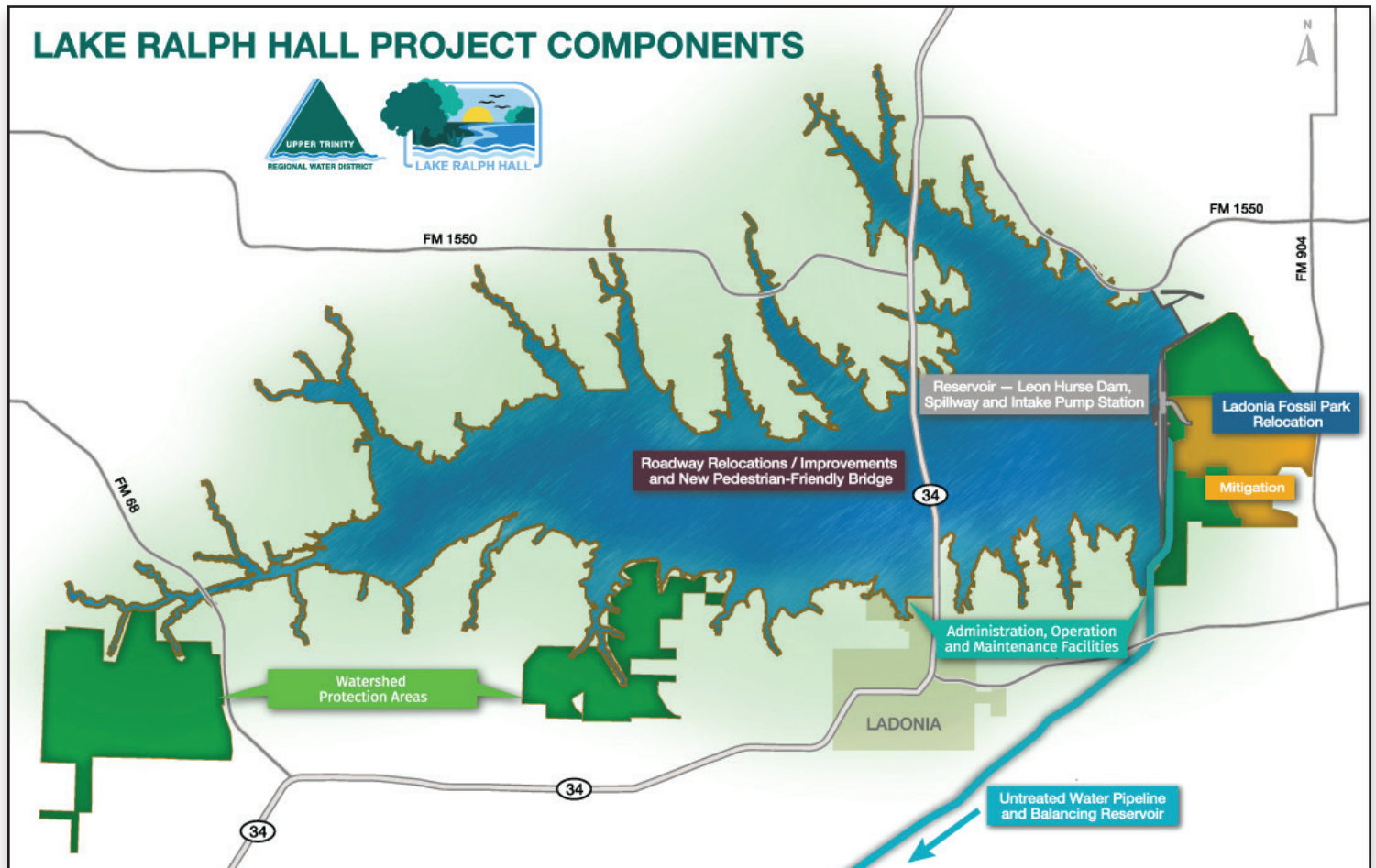
A lot happened last year! Construction began on major pieces (pump station, pipeline, etc.) to deliver lake water to Upper Trinity. Here's a glimpse of 2023 accomplishments as Lake Ralph Hall begins another pivotal year:

- **Roads and Bridges** — Road work was completed, with both bridges opened to the public in July (North Sulphur River bridge) and October (Merrill Creek bridge).
- **Leon Hurse Dam** — The dam reached 40% complete. Over 1M yards of construction material have been moved to build up the embankment.
- **Spillways** — Work on both spillways and intake structure began in November 2022, with ongoing placement of Roller Compacted Concrete to form the primary spillway.

- **Lake Footprint** — Crews finished clearing the lake footprint east of SH 34.
- **Raw Water Pump Station** — Construction began last summer, and the foundation, walls and piping to and from the station were largely completed.
- **Pipeline** — Workers finished 14 of the 22 tunnels needed for the pipeline. Pieces of pipe began to arrive, and around 25%, or 7.5 of the total 32 miles, was installed.

View the project's end-of-year video on YouTube: <https://www.youtube.com/watch?v=-WQ3Lian7vs>.

PROJECT COMPONENTS **UPDATE**



Reservoir, Leon Hurse Dam & Spillway

Constructing a 2.3 mile-long dam, intake pump station to pump water into the untreated water pipeline and spillway to release excess water back into the North Sulphur River.

- Close to 500 construction workers are now onsite. Many are placing and compacting dirt for the embankment on both ends of the dam. So far they have placed over 1 million cubic yards of dirt.
- Crews continue to pour concrete for the spillway and the dam's water intake.
- Crews continue to clear the general lake area east of SH 34.

Roadway and Bridge Improvements

Constructing a new pedestrian-friendly SH 34 lake bridge, relocating part of FM 1550 and improvements and closures to various county roads.

- The North Sulphur River and Merrill Creek Bridges are finished and open to the public.
- A new section of FM 1550 is complete and open to the public.
- Contractors finished their work on the county roads.

Administration, Operation and Maintenance Facilities

Building facilities for the lake's day-to-day operation, management and maintenance facilities.

- Halff Associates and Freese & Nichols are currently planning/designing all lake facilities.

Pipeline

Installing a 32-mile underground pipeline and creating a balancing reservoir to provide water to Upper Trinity's water system for treatment and delivery.

- UTRWD has acquired all necessary land for the pipeline, balancing reservoir and delivery point facility.
- Construction on the pump station continues with work on its foundation and walls.
- Crews continue to deliver and install sticks of pipe in the ground. Work to dig the pipeline tunnels continues as well.
- The balancing reservoir and delivery point should begin construction early this year.

Mitigation/Watershed Protection Areas

Returning a portion of the former North Sulphur River to its natural, meandering path. Leaving other areas in their natural condition to protect water quality in the lake.

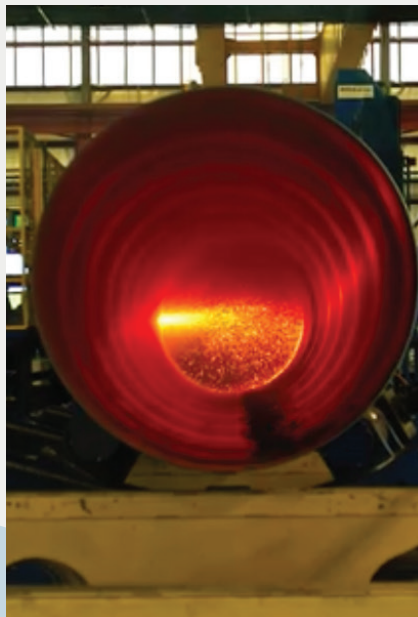
- Mitigation work has begun with site clearing and ground preparations.
- The temporary fossil park continues to attract fossil hunters.

SPOTLIGHT

The Local Craftsmanship Behind the Pipe

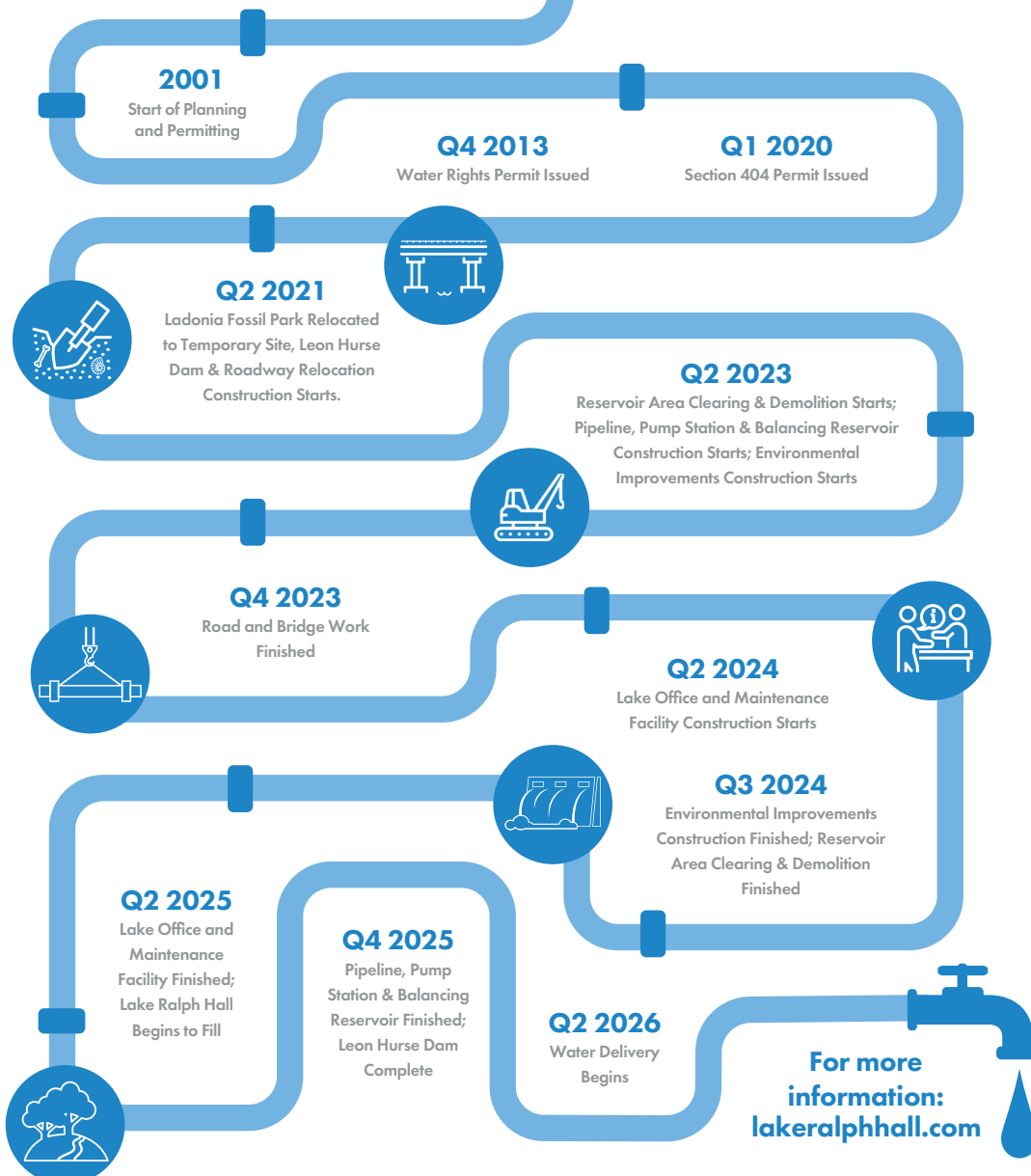
The American SpiralWeld Pipe production plant in local Paris, TX, just 35 minutes north of Lake Ralph Hall, is making all the pipe to deliver water from #LakeRalphHall to treatment. They recently captured the process of creating each massive 5.5 ft. wide by 50 ft. long 'stick' of pipe in a behind-the-scenes video (view on YouTube: bit.ly/4aWoD9D)

After each piece is finished, it's loaded onto a semi for delivery. So far around 25% of the pipeline has been installed, and around 3,400 'sticks' are needed to cover the entire 32 miles.



Lake Ralph Hall

Project Schedule



12.2023

All dates subject to change as construction progresses

