



# Lake Ralph Hall

## By the Numbers

**1.1**

MILE NEW PEDESTRIAN FRIENDLY BRIDGE OVER LAKE



**2.3**

MILE LONG LEON HURSE DAM



**12**

SQUARE MILES OF LAKE SURFACE AREA

**59** BILLION GALLONS OF LAKE STORAGE CAPACITY\*\*

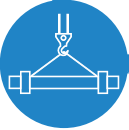


**\$490**

MILLION ESTIMATED COST

**32**

MILES OF UNDERGROUND PIPE



**54**

MILLION GALLONS OF WATER DELIVERED DAILY\*



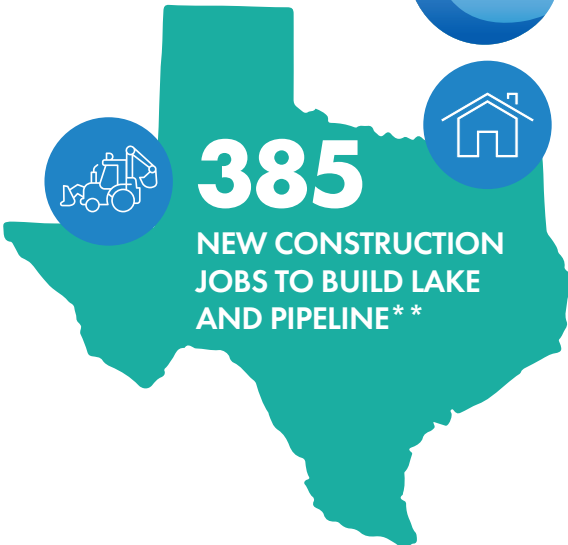
**385**

NEW CONSTRUCTION JOBS TO BUILD LAKE AND PIPELINE\*\*



**29**

NORTH TEXAS COMMUNITIES SERVED



\*Raw and Reuse water  
\*\* Approximately

For more information: [lakeralphhall.com](http://lakeralphhall.com)