

PROJECT UPDATE

Lake Ralph Hall is a special place (a natural place, a quiet place, a hospitable place) both for people and for the environment, assuring a reliable water supply for generations to come.

Supplying Locally — The Building Blocks of a Lake



Hope Concrete delivering material onsite at Lake Ralph Hall.

A lot of material goes into building a lake—especially concrete. Just ask Tim Foley, General Superintendent of Hope Concrete, a local contractor based out of Commerce and Bonham, TX. His team has delivered more than 1500 loads of concrete to date, and will deliver around 750-1000 more for various project components from building new roads to the dam and pump station.

Hope Concrete has served north central Texas for just over 75 years and is a family business started by Foley's grandfather.

"We supply all the material to Archer Western and Granite to build all the structures for the reservoir," Foley explained. "Both of those companies have been customers of ours for 25+ years."

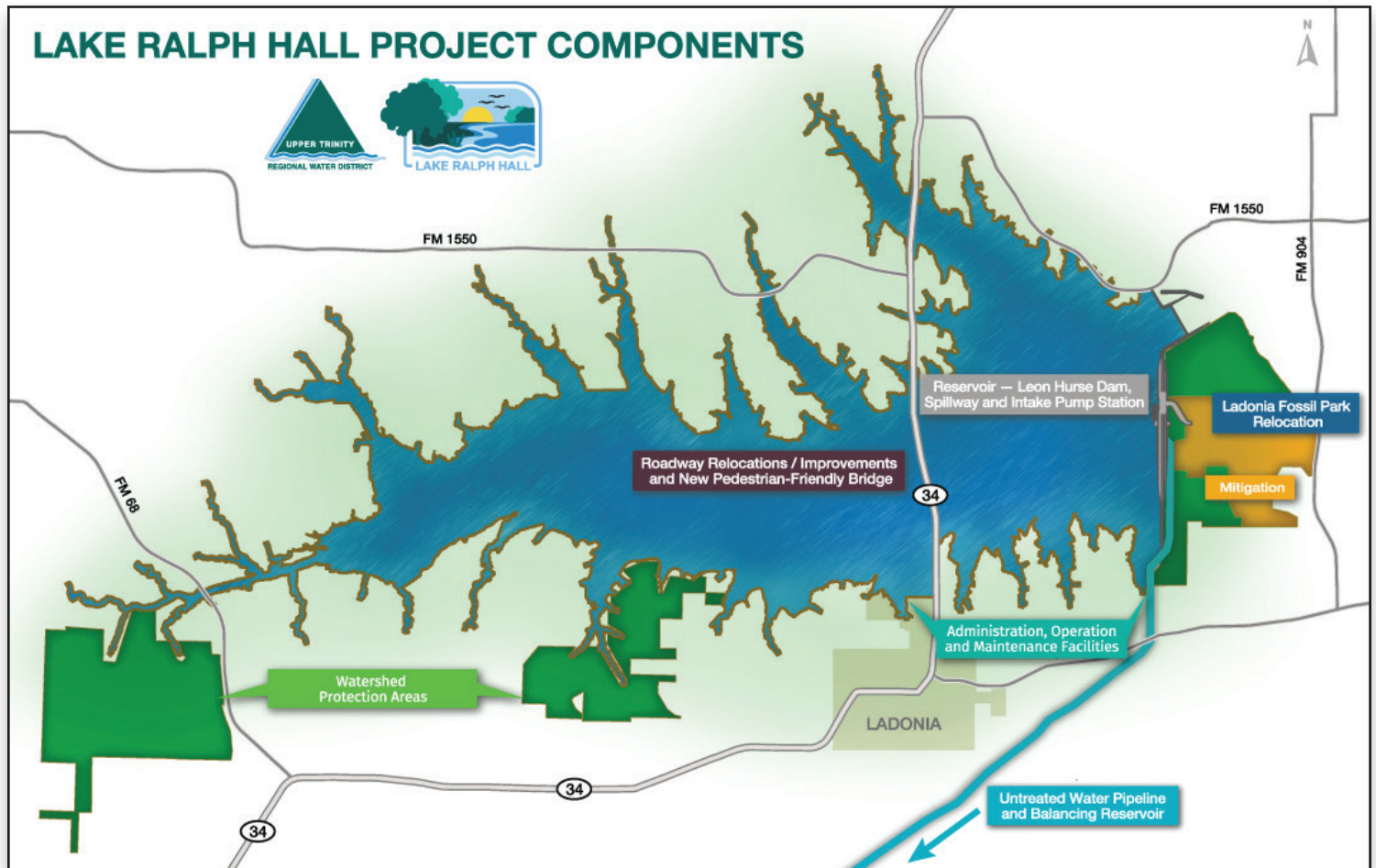
His team of around 30 local workers drives ready-mix trucks 12-15 miles to the lake site and provides on-site quality

control and assistance as Archer Western and the lake's other contractors pour the concrete for various parts of the project. Daily loads vary from five to 50 or more, depending on project requirements. Local Coston & Son Ready Mix in Paris, TX works with Hope Concrete for extra back-up on especially large pours.

"They have been super helpful because some of the placements have required so much concrete at once," Foley shared.

Hope Concrete is glad to work on a project with partners they value and "because it's in our part of the world," Foley said. "We'll all use that lake sometime because we all live around it."

PROJECT COMPONENTS **UPDATE**



Reservoir, Leon Hurse Dam & Spillway

Constructing a 2.3 mile-long dam, intake pump station to pump water into the untreated water pipeline and spillway to release excess water back into the North Sulphur River.

- Around 200 construction workers are now onsite placing and compacting dirt for the embankment on both ends of the dam. So far they have placed over 1 million cubic yards of dirt.
- Crews continue to pour concrete for the spillway and the dam's water intake.
- Crews continue to clear the general lake area east of SH 34.

Roadway and Bridge Improvements

Constructing a new pedestrian-friendly SH 34 lake bridge, relocating part of FM 1550 and improvements and closures to various county roads.

- The North Sulphur River and Merrill Creek Bridges are finished and open to the public.
- A new section of FM 1550 is complete and open to the public.
- Contractor is finishing their work on county roads and is close to completion.

Administration, Operation and Maintenance Facilities

Building facilities for the lake's day-to-day operation, management and maintenance facilities.

- Halff Associates and Freese & Nichols are currently planning/designing all lake facilities.

Pipeline

Installing a 32-mile underground pipeline and creating a balancing reservoir to provide water to Upper Trinity's water system for treatment and delivery.

- UTRWD has acquired all necessary land for the pipeline, balancing reservoir and delivery point facility.
- Construction on the pump station continues with work on its foundation and walls.
- Crews continue to deliver and install sticks of pipe in the ground. Work to dig the pipeline tunnels continues as well.
- The balancing reservoir and delivery point should begin construction early next year.

Mitigation/Watershed Protection Areas

Returning a portion of the former North Sulphur River to its natural, meandering path. Leaving other areas in their natural condition to protect water quality in the lake.

- Mitigation work has begun with site clearing and ground preparations.
- The temporary fossil park continues to attract fossil hunters.

SPOTLIGHT

A Pump Station Takes Shape

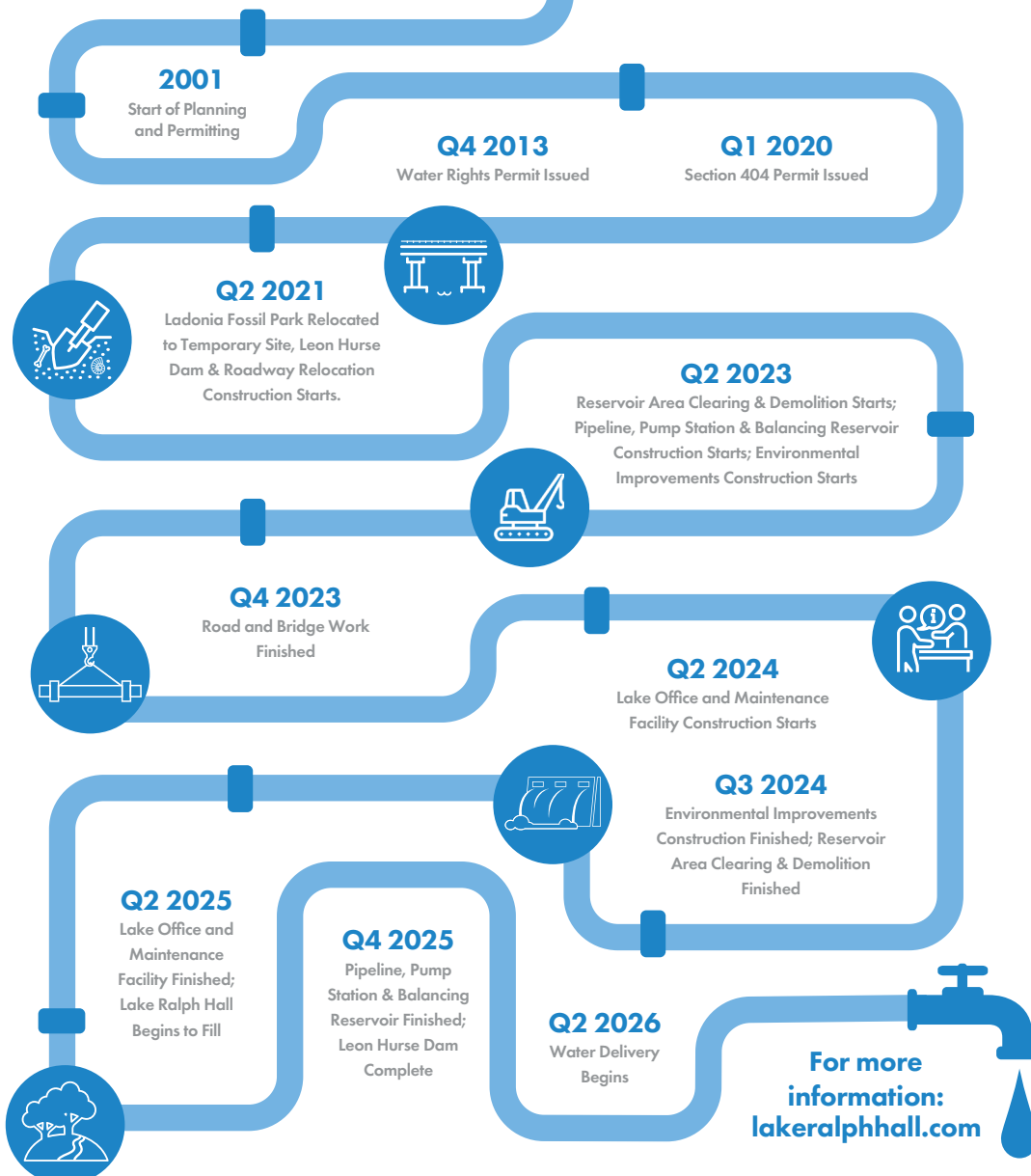
Many key pieces of the Lake Ralph Hall project have taken shape this year—from dam and spillway to pipeline, which is now being laid. Case in point is the pump station, which broke ground late January. The station will pump water from Lake Ralph Hall through miles of pipeline to treatment.

Construction on the pump station has made significant headway, especially this fall, with the foundation and the pump room walls complete. Crews have begun installing the station's foundational electric components in preparation of placing the Electrical Room slab. The station's massive pumps, interior pipes and electrical components are being manufactured. Some pipe has arrived to connect the station to the lake's intake structure, and that will be laid out along its future route. The pump station is on schedule for completion with the rest of the lake project.



Lake Ralph Hall

Project Schedule



12.2023

All dates subject to change as construction progresses

