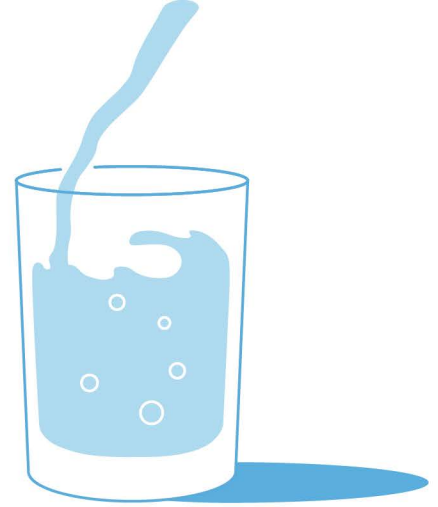


CONSUMER CONFIDENCE REPORT

2021



Upper Trinity provides safe and reliable drinking water service to more than 29 communities and utilities in Denton and Collin Counties. We endeavor to provide water that meets or exceeds all Safe Drinking Water Standards established by the Environmental Protection Agency (EPA). Upper Trinity has two water treatment plants—the Taylor plant in Lewisville and the Harpool plant in Providence Village. The treatment process at both plants assures that our customer cites and utilities receive the best drinking water—for both taste and health.

Every year we provided our customer cites and utilities an annual Consumer Confidence Report (CCR) which summarizes the quality of drinking water we provide. The report is based on analysis of data from numerous EPA required tests. The EPA requires all water systems to test for over 100 specified contaminants. The 2021 CCR reports that all of the federally regulated or monitored contaminants that were tested in Upper Trinity's drinking water were below the Maximum Contaminant Level (MCL).

WATER TREATMENT PLANTS

THOMAS E. TAYLOR WATER TREATMENT PLANT

LEWISVILLE, TEXAS

TREATMENT CAPACITY:
70 MILLION GALLONS PER DAY



TOM HARPOOL WATER TREATMENT PLANT

PROVIDENCE VILLAGE, TEXAS

TREATMENT CAPACITY:
27.5 MILLION GALLONS PER DAY



MEET TRINITY

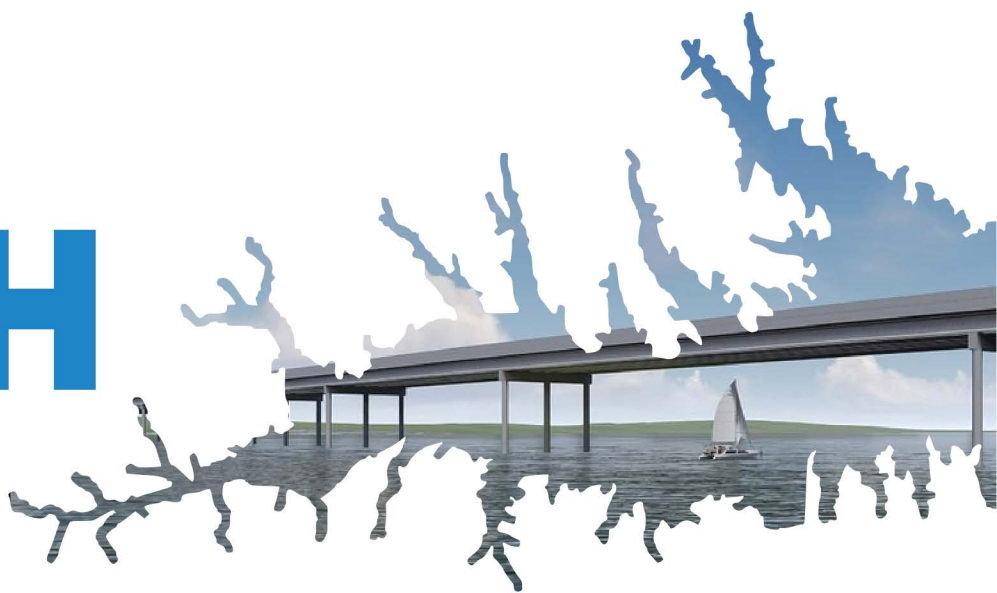
WEEK



Upper Trinity's new water conservation mascot, Trinity, helps us communicate important information to the public in simple, friendly ways.

Keep an eye out for Trinity's friendly face on all social media platforms, including Facebook, Twitter, Instagram, and even YouTube videos!

LAKE RALPH HALL



Lake Ralph Hall will be the newest lake and one of the state's biggest projects to be built in nearly 30 years. The new lake will be located on the North Sulphur River near Ladonia in Fannin County. It will provide a safe, reliable water supply to the communities that Upper Trinity Regional Water District (UTRWD) serves in North Texas.

Construction on the lake began in June of 2021, with water delivery scheduled by 2026. Once complete, it will provide up to 54 million gallons per day — 35 million gallons daily (MGD) of raw and 19 MGD of reuse water.

59B GALLON CAPACITY

54M GALLONS DAILY

2.3 MILE LEON HURSE DAM

12 SQ. MILES LAKE SURFACE AREA

1.1 MILE PEDESTRIAN-FRIENDLY BRIDGE

WATER QUALITY TEST RESULTS

2021

2021 WATER QUALITY REPORT						
WATER FROM UPPER TRINITY REGIONAL WATER DISTRICT CONSTITUENTS DETECTED FOR 2021						
UTRWD Source Water - Name: Lewisville/Chapman Lakes - Type: Surface Water - Location: Denton/Delta and Hopkins Counties						
Date	Substance	Maximum Amount in UTRWD Water	Range in UTRWD Water	MCL	MCLG	Possible Source
Regulated at the Treatment Plant						
9/27/2021	Barium (ppm)	0.041	0.033 - 0.041	2 ppm	2 ppm	Discharge of drilling wastes; Discharge from metal refineries; Erosion of natural deposits.
Sept - 2021	Bromate^ (ppb)	7.0	6.7 - 7.0	10 ppb	0 ppb	By-product of drinking water disinfection.
2/23/2021	Cyanide (ppb)	110	26 - 110	200 ppb	200 ppb	Discharge from steel/metal factories; Discharge from plastic and fertilizer factories.
2/23/2021	Fluoride (ppm)	0.214	0.168 - 0.214	4 ppm	4 ppm	Erosion of naturally-occurring deposits; Discharge from fertilizer and aluminum factories.*
2/10/2021	TOC (ppm)	3.7	1.2 - 3.7	TT	n/a	Naturally present in the environment.
2/1/2021	Turbidity^^ (NTU)	0.20	0.06 - 0.20	0.3 NTU	n/a	Soil runoff.
2/23/2021	Nitrate (ppm)	0.583	0.19 - 0.583	10	10	Fertilizer runoff, Septic tanks, Animal waste runoff.
^The MCL for Bromate is the running annual average of monthly averages, computed quarterly (30 TAC § 290.114(b)(C)).						
*UTRWD does not add fluoride to its water.						
^^100% of samples were below the 0.3 NTU turbidity limit.						
Radioactive Contaminants						
9/16/2015	Combined Radium (pCi/L)	1.5	n/a	5 pCi/L	0 pCi/L	Erosion of natural deposits.
Synthetic Organic Chemicals Including Pesticides and Herbicides						
9/27/2021	Atrazine (ppb)	0.20	< 0.1 - 0.2	3 ppb	3 ppb	Runoff from herbicide used on row crops.
2/23/2021	Simazine (ppb)	0.09	< 0.06 - 0.09	4 ppb	4 ppb	Effluents at manufacturing sites, Runoff from herbicides.
You may be more vulnerable than the general population to certain microbial contaminants, such as <i>Cryptosporidium</i> , in drinking water. Infants, some elderly, or immunocompromised persons such as those undergoing chemotherapy for cancer; those who have undergone organ transplants; those who are undergoing treatment with steroids; and people with HIV/AIDS or other immune system disorders can be particularly at risk from infections. You should seek advice about drinking water from your physician or health care provider. Additional guidelines on appropriate means to lessen the risk of infection by <i>Cryptosporidium</i> are available from the Safe Drinking Water Hotline at (800) 426-4791. Upper Trinity continues to analyze our source water for the presence of <i>Cryptosporidium</i> . <i>Cryptosporidium</i> has never been detected in any samples of Upper Trinity water.						
Definitions:						
MCL: Maximum Contaminant Level. The highest level of a contamination that is allowed in drinking water.				TT: Treatment Technique. A required process intended to reduce the level of a contaminant in drinking water.		
MCLG: Maximum Contaminant Level Goal. The level of a contamination in drinking water below which there is no known or expected risk to health.				Turbidity: A measure of the clarity of water. While turbidity has no known health effects, it can interfere with disinfection and provide a medium for microbial growth. Turbidity may indicate the presence of disease-causing symptoms such as nausea, cramps, diarrhea, and associated headaches.		
NTU: Nephelometric urbidity nits. A measure of turbidity in water.				TOC: Total Organic Carbon. Has no known health affects. However, TOC provides a medium for the formation of disinfection by-products. These include trihalomethanes (THMs) and haloacetic acids (HAAs). Drinking water containing these by-products in excess of the MCL may lead to adverse health effects, liver or kidney problems, or nervous system effects, and may lead to an increased risk of getting cancer.		
pCi/L: Picocuries per iter. A measure of radioactivity in water equal to 10-12 curies. Quantity of radioactive material producing 2.22 nuclear transformations per minute.						
ppb: Parts per Billion. One part per billion is roughly equal to one packet of artificial sweetener sprinkled into an Olympic-size swimming pool.						
ppm: Parts per million. One part per million approximates one packet of artificial sweetener sprinkled into 250 gallons of iced tea.						
THIS REPORT CONTAINS THE MOST RECENT DATA AVAILABLE IN ACCORDANCE WITH REGULATIONS.						
Este reporte incluye informacion importante sobre el agua para tomar. Para asistencia en espanol, favor de llamar al telefono (972-219-1228)						
For opportunities to participate in decisions that may affect water quality, Board Meetings are held on the first Thursday of the month, starting at 1pm. Additional resources can be found at www.utrwd.com or by calling 972-219-1228						

CONNECT



@UTRWD



@UTRWD



@UPPERTRINITYWATER1989



UPPER TRINITY REGIONAL WATER DISTRICT



LAKE RALPH HALL



@LAKERALPHHALL1



**FOR MORE INFORMATION, VISIT OUR WEBSITE
OR CONTACT US AT THE INFORMATION BELOW:**



**UPPER TRINITY
REGIONAL WATER DISTRICT**

900 NORTH KEALY AVENUE
PO BOX 305
LEWISVILLE, TX 75067

(972) 219-1228

WWW.UTRWD.COM