

PROJECT UPDATE

Lake Ralph Hall is a special place (a natural place, a quiet place, a hospitable place)
both for people and for the environment, assuring a reliable water supply for generations to come.

Final Pour at Merrill Creek Bridge: Completion Draws Near



Workers finish the Merrill Creek Bridge.

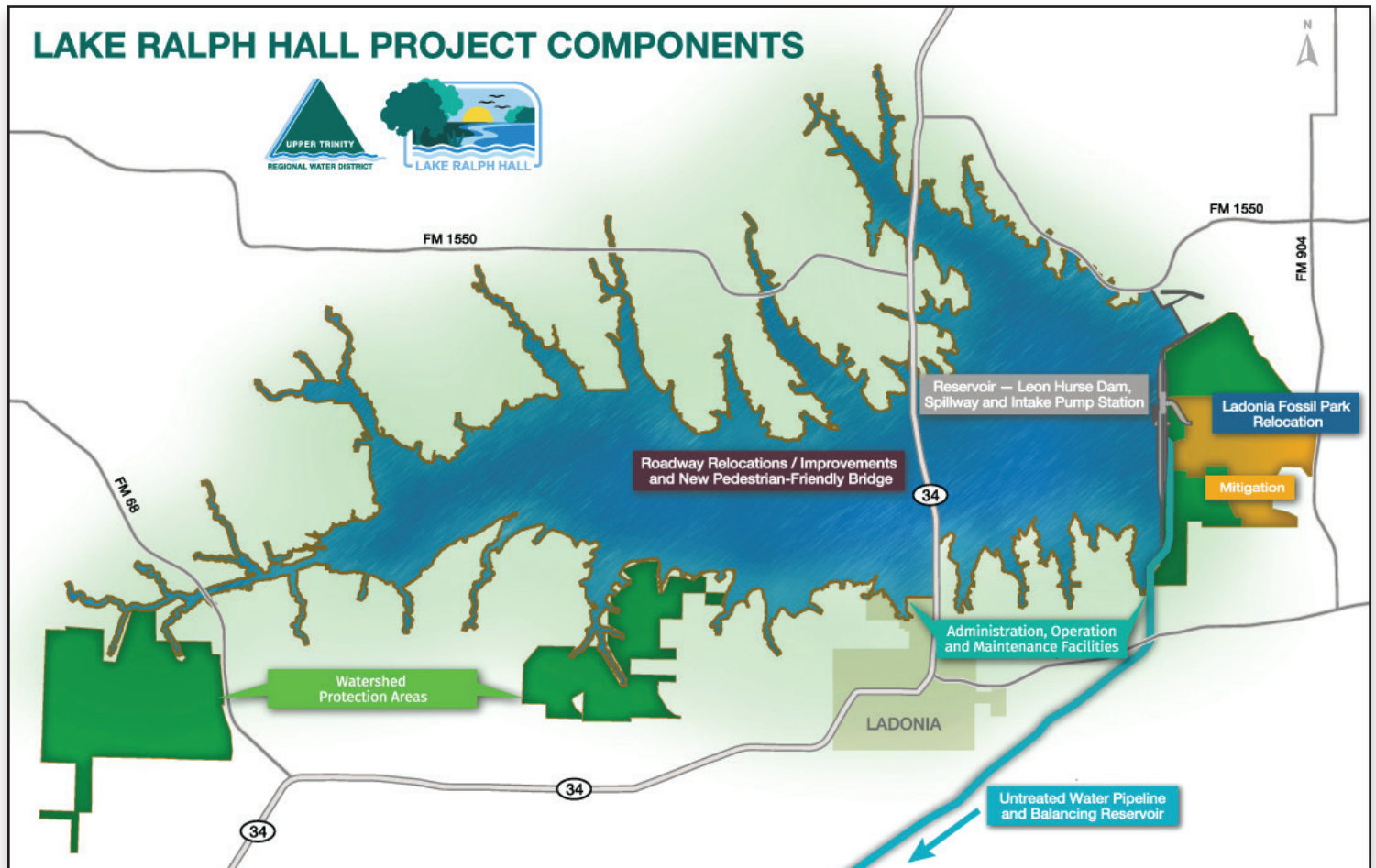
Construction of Lake Ralph Hall in Fannin County reached another major milestone with the final concrete pour for the Merrill Creek bridge, one of two bridges that will span the lake. Now that Merrill Creek bridge decking is complete, only the side barriers and asphalt need to be installed.

“Through our partnership with Flatiron Construction and Lamb-Star Engineering, the road and bridge contractor and inspectors, we recognized this milestone and look forward to opening both new roadway segments along State Highway 34 between Ladonia and Honey Grove,” said Ed Motley, Upper Trinity’s Program Manager for Lake Ralph Hall.

Both the Merrill Creek bridge and the 1.1-mile-long pedestrian-friendly State Highway 34 bridge are scheduled to open to traffic this spring. The new section of FM 1550 is also on schedule to finish in spring.

“It’s been satisfying to see work on both the Merrill Creek and SH 34 bridges go from basically grassland to nearing completion,” said Project Manager Josh Pfginst with Flatiron Constructors, Inc. “The final pour of concrete marked a milestone that was achieved safely and on schedule.”

PROJECT COMPONENTS **UPDATE**



Reservoir, Leon Hurse Dam & Spillway

Constructing a 2.3 mile-long dam, intake pump station to pump water into the untreated water pipeline and spillway to release excess water back into the North Sulphur River.

- Around 80 construction workers are onsite placing and compacting dirt for the embankment on both ends of the dam.
- Crews have begun to clear the general lake area east of SH 34.
- Crews are pouring concrete for the spillway and dam.

Roadway and Bridge Improvements

Constructing a new pedestrian-friendly SH 34 lake bridge, relocating part of FM 1550 and improvements and closures to various county roads.

- Crews poured the last of the bridge decking for the Merrill Creek Bridge, and now they only have to make final roadway connections and complete the bridge barriers.
- Construction continues on new sections of FM 1550 to accommodate the future lake shoreline. All state roadway work is scheduled to finish this spring.

Administration, Operation and Maintenance Facilities

Building facilities for the lake's day-to-day operation, management and maintenance facilities.

- Halff Associates and Freese & Nichols are currently planning/designing all lake facilities.

Pipeline

Installing a 32-mile underground pipeline and creating a balancing reservoir to provide water to Upper Trinity's water system for treatment and delivery.

- UTRWD continues the process of acquiring the necessary easements for the pipeline and has acquired the property for the balancing reservoir.
- The designs for the pipeline and pump station are both nearly finished. UTRWD has begun the process of acquiring the necessary pumps, pipes, and valves in preparation to begin construction on these components in Spring/Summer of this year.

Mitigation/Watershed Protection Areas

Returning a portion of the former North Sulphur River to its natural, meandering path. Leaving other areas in their natural condition to protect water quality in the lake.

- Teams to complete the restoration are assembling and will begin construction later this spring.
- The temporary fossil park continues to attract fossil hunters.

SPOTLIGHT

The Manpower Behind Our Newest Lake

"Team effort" could be used to describe every aspect of construction on Lake Ralph Hall. "It couldn't be done without so much simultaneous collaboration and initiative from our project contractors," said Randy Sliger, UTRWD Lake Ralph Hall Construction Manager.

Around 240 workers are currently hard at work on the massive project with:

- **80 (approx.) crew members** onsite daily, finishing the bridge barriers, building the walking path and connecting the new bridges with existing roadways.
- **130+ workers (and growing)** excavating/building the Leon Hurse Dam and its various pieces.
- **16-20 workers** daily creating road entrances and excavating for the pump station.

- **9 operators with RES** onsite for the past several weeks, clearing over 280 acres of the future lake bottom.

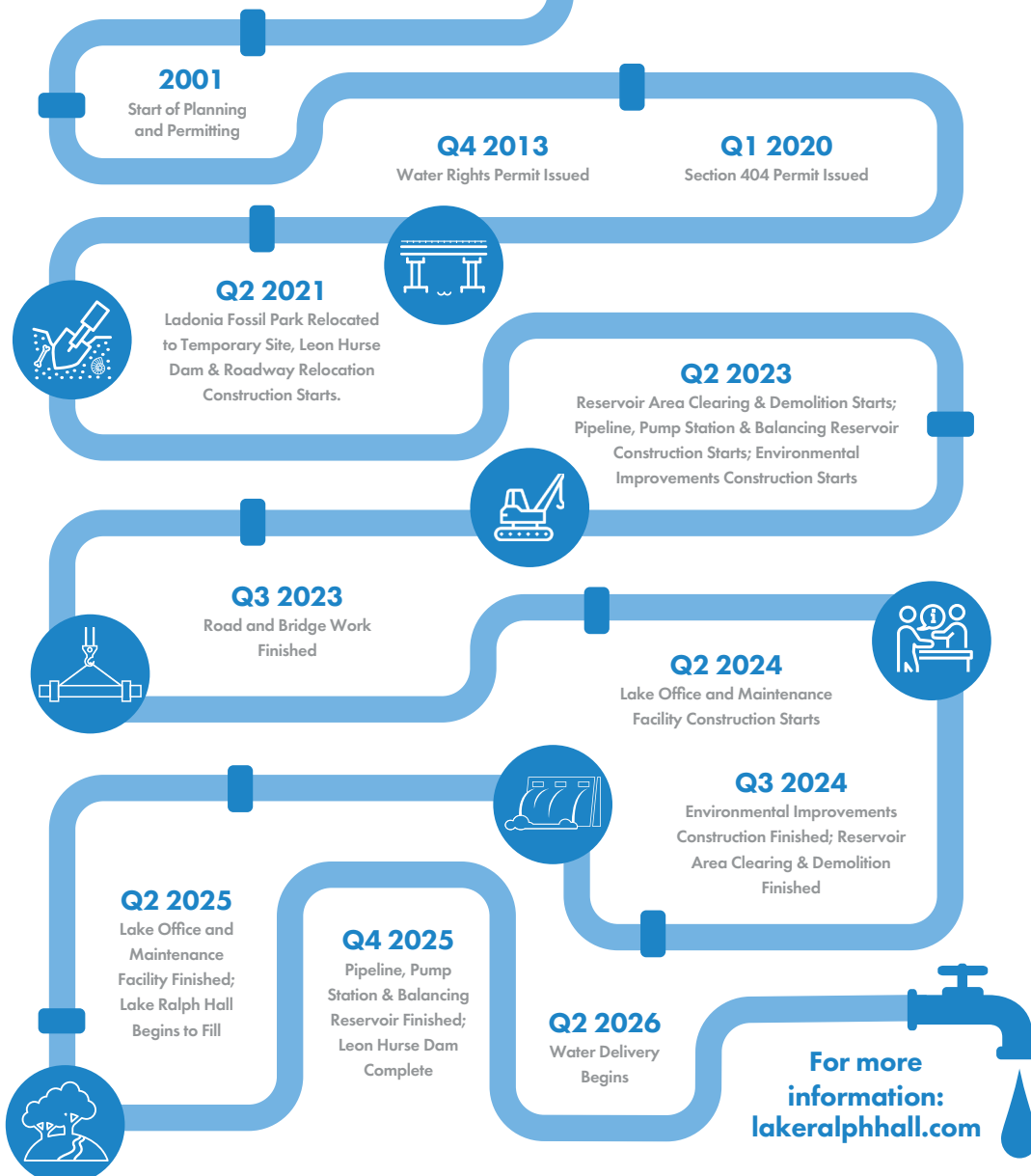
As they work simultaneously in different areas, key components for Lake Ralph Hall continue to take shape.

"We're making great headway," said Pete Schexnayder, Project Manager for Granite. "The signatory structure of the Leon Hurse Dam is emerging from its foundation. Our construction crews have completed over 200,000 man-hours, and we are excited to watch it come together."



Lake Ralph Hall

Project Schedule



02.2023

All dates subject to change as construction progresses