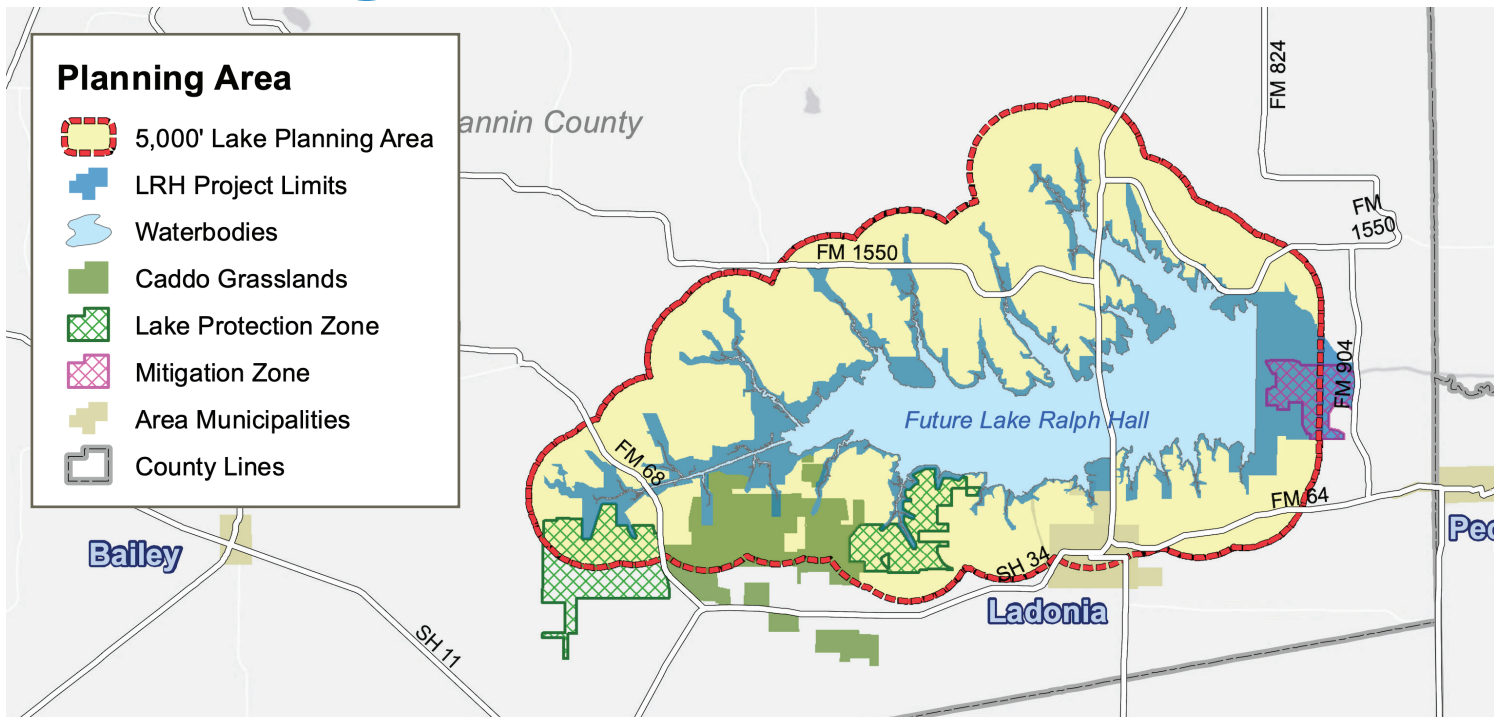


PROJECT UPDATE

Lake Ralph Hall is a special place (a natural place, a quiet place, a hospitable place) both for people and for the environment, assuring a reliable water supply for generations to come.

Planning for Fannin's Newest Lake



One of the maps of Lake Ralph Hall in its comprehensive plan that is being used to determine best zoning around the future reservoir

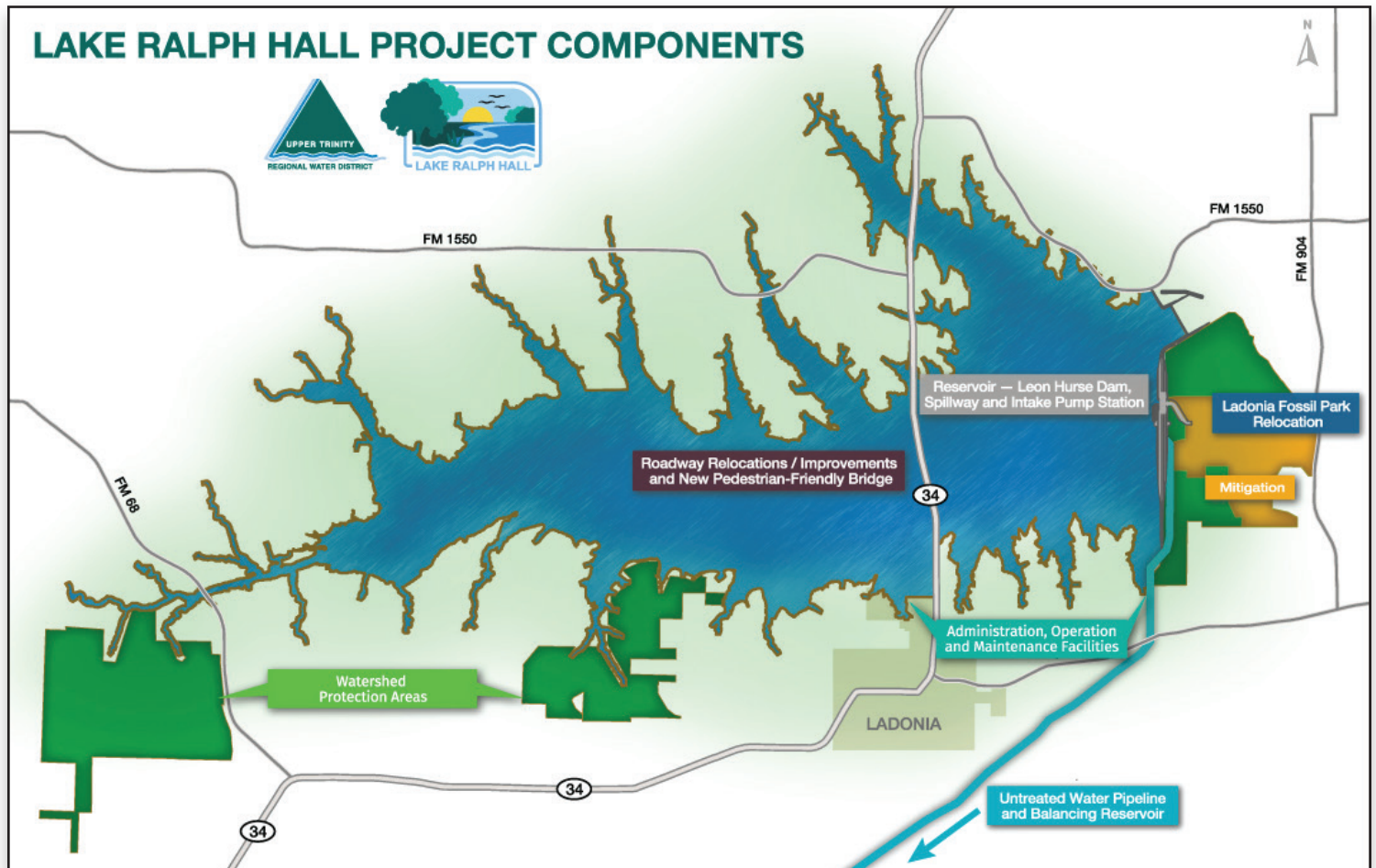
As construction moves forward for Lake Ralph Hall, so must plans to prepare for land use around the future lake. In October, the Fannin County Commissioner's Court adopted the Lake Ralph Hall Comprehensive Plan, which was created to provide general guidelines for how land should be zoned and used around the lake to protect the reservoir and its water quality. The county is now conducting public meetings in order to develop specific zoning regulations based on the plan. These regulations will provide specific rules for how the county can best regulate development that will occur around and near the future lake.

A public hearing is scheduled for January, and all impacted parties (including all key landowners) will be notified in advance so they can provide input on how certain areas

around the lake should be regulated. The county currently plans to send a completed set of zoning regulations to the commissioner's court for review and/or approval by the end of next January. Upper Trinity Regional Water District is working closely with the county to assist throughout this process so that Fannin County is fully prepared to facilitate development around Lake Ralph Hall as a thriving recreational venue and excellent water source for decades to come.

Learn more about the Lake Ralph Hall Comprehensive Plan and next steps to develop zoning regulations: <https://freese.mysocialpinpoint.com/ralphhall/home>.

PROJECT COMPONENTS **UPDATE**



Reservoir, Leon Hurse Dam & Spillway

Constructing a 2.3 mile-long dam, intake pump station to pump water into the untreated water pipeline and spillway to release excess water back into the North Sulphur River.

- Around 70 construction workers are onsite placing and compacting dirt for the embankment on both sides of the dam.
- Crews have begun to clear the general reservoir area east of SH 34.
- Crews have begun pouring concrete for the spillway and dam.



Roadway and Bridge Improvements

Constructing a new pedestrian-friendly SH 34 lake bridge, relocating part of FM 1550 and improvements and closures to various county roads.

- Crews are pouring the last of the bridge decking for the SH 34 bridge, after which they will only need to finish the bridge barriers.
- All the beams are placed for Merrill Creek bridge, which will provide access over a finger of the future lake.
- Construction continues on new sections of FM 1550 to accommodate the future lake shoreline. All state roadway work is scheduled to finish in March.

Administration, Operation and Maintenance Facilities

Building facilities for the lake's day-to-day operation, management and maintenance facilities.

- Halff Associates and Freese & Nichols are currently planning/designing all lake facilities.

Pipeline

Installing a 32-mile underground pipeline and creating a balancing reservoir to provide water to Upper Trinity's water system for treatment and delivery.

- UTRWD continues the process of acquiring the necessary land for the pipeline and has acquired the property for the balancing reservoir.
- The designs for the pipeline are over halfway finished, and those for the pump station are nearly complete. The District has begun the process of acquiring the necessary pumps, pipes and valves so they can begin construction on these components spring/summer of next year.

Mitigation/Watershed Protection Areas

Returning a portion of the former North Sulphur River to its natural, meandering path. Leaving other areas in their natural condition to protect water quality in the lake.

- Designers are preparing final plans for mitigation, with plans to begin construction next spring.
- The temporary fossil park continues to attract fossil hunters from all around.

SPOTLIGHT

Significant Inroads on SH 34 and Merrill Creek Bridge

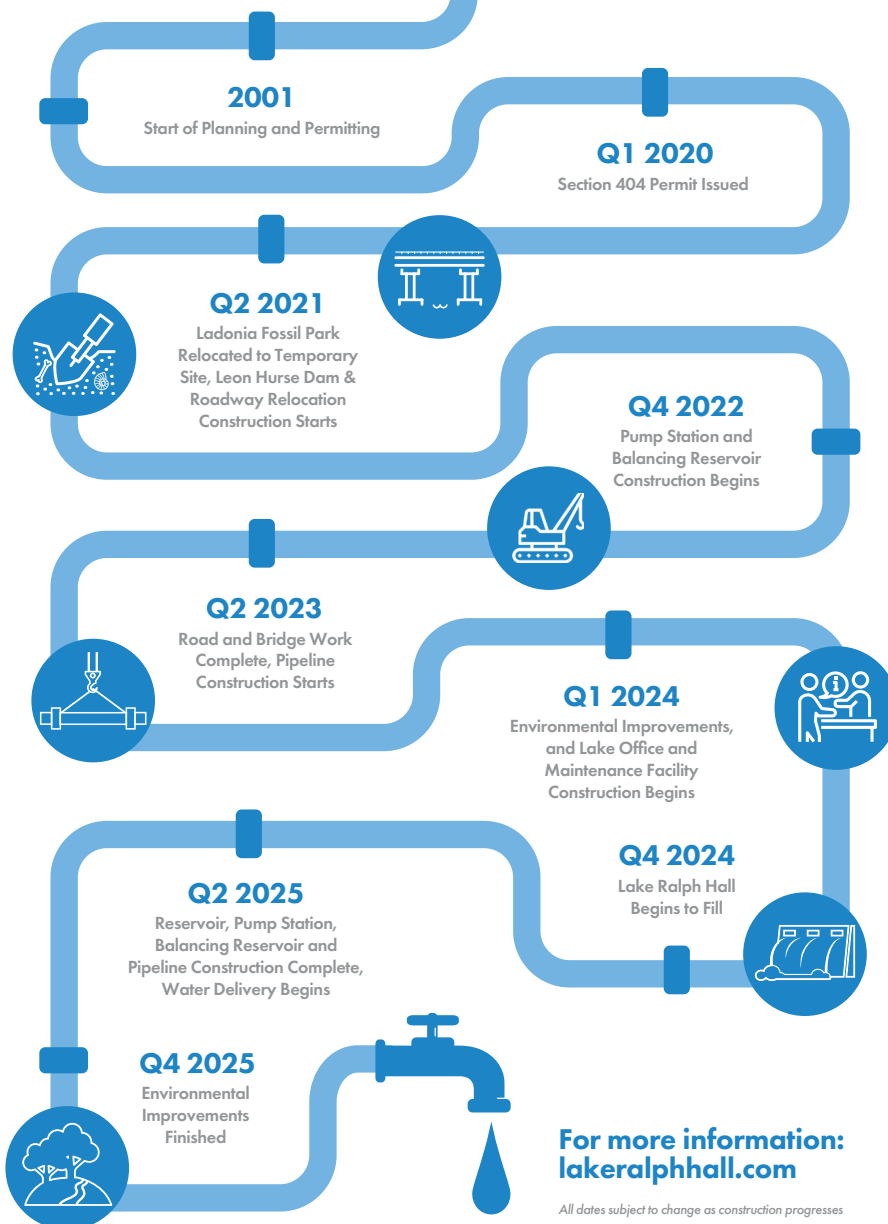
Construction on the roadways over and around future Lake Ralph Hall has been—quite literally—trucking along. The last piece of deck for the North Sulphur Bridge was laid late in November, and all the beams have been set on Merrill Creek Bridge. Merrill Creek's deck will be finished by the end of December, leaving only the side barriers to be poured. Those will be completed all at once and followed by asphalt in the next couple months if the weather allows. Work on country roads around the lake is nearly finished as well. Flatiron currently has around 80 workers onsite, and their goal is to open the bridges to traffic starting middle of next spring.



Recent progress on Merrill Creek Bridge

Lake Ralph Hall

Project Schedule



For more information:
lakeralphhall.com

All dates subject to change as construction progresses