



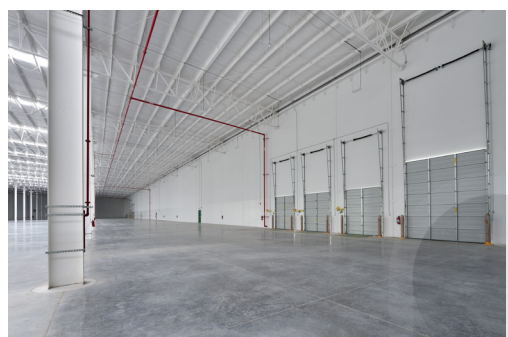
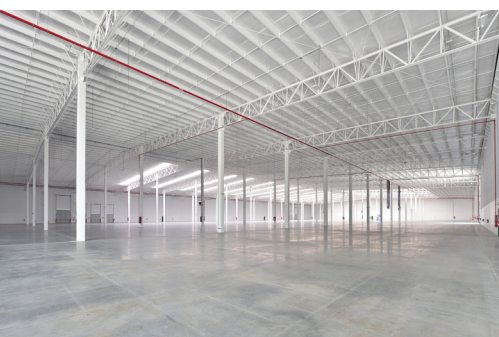
# REYNOSA REY EAST PARK I

223,799.35 SF - 20,791.64 M<sup>2</sup>

LEED  
CERTIFIED



**FOR LEASE / DIVISIBLE** 2 (111,944.87 SF - 10,400 M<sup>2</sup>)



## LOCATION FEATURES

- Site located within an industrial complex
- Immediate access to Pharr International Bridge
- 8 minutes from Reynosa International Airport
- Ample labor force close to the complex
- Location main avenues: carretera Matamoros-Reynosa-Monterrey
- Building located near to Reynosa downtown and residential area
- Fully fenced property



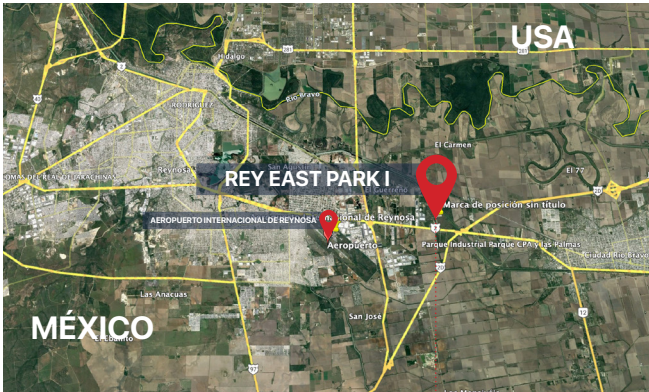
Calle Verde 2,300  
Centinela East Industrial Park  
Reynosa, Tamaulipas



**+52 (55) 8957 1111**  
valueadd@centinelaproperty.com  
www.centinelaproperty.com

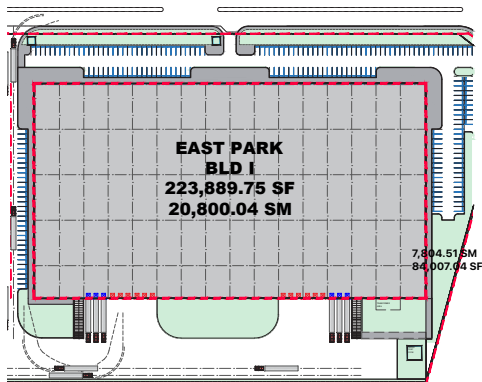
# REY EAST PARK I

## BUILDING SPECIFICATIONS



Leasable area	223,799.35 SF - 20,791.64 M <sup>2</sup>
Land area	453,587.30 SF - 42,139.63 M <sup>2</sup>
Production area	223,799.35 SF - 20,791.64 M <sup>2</sup>
Offices & Services	Build to suit
Clear height	32 FT
Lighting	LED 30 fc
Parking spaces	204
Fire protection systems	Fire protection systems with hoses cabinets NOM-NFPA
Electrical substation	One - 500 KVA capacity
Skylights	5% polycarbonate 6mm
Bay size	50' x 50'
Loading docks	6
Roof type	SSKR-18 Cal 22
Floor type	6" concrete 250 kg/cm <sup>2</sup>
Forklift ramps	2
Construction type	Tilt up precast concrete

## FLOOR PLAN



## FOR MORE INFORMATION

PLEASE CONTACT

Samantha Almaguer

MX: +52 (55) 8054-9454

salmaguer@centinelaproperty.com

