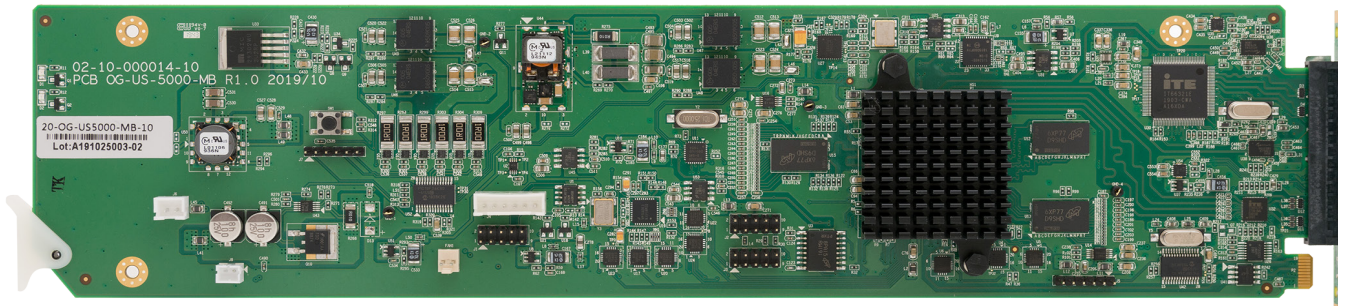


openGear

OG-US-5000

Bi-directional Universal Scaler with Genlock



OG-US-5000-MB

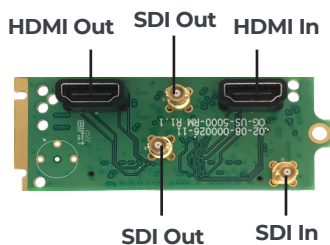
Key Features

- openGear OGX card-based form factor
- Dashboard control enabled
- Supports up to HDMI2.0 and 12 GSDI inputs
- Supports HDMI (UHD@60Hz/30Hz) and 12G SDI outputs
- Supports Genlock via openGear frame
- Scales any SDI input resolution to HDMI and SDI
- Scales any HDMI input resolutions to HDMI and SDI
- SDI output supports 720P, 480/576i, 480/576P, 1080i/P in 23.98, 24, 25, 29.97, 30, 50, 59.94, 3840x2160 50/59.94Hz
- HDMI output support 720P, 480/576i, 480/576P, 1080i/P in 50 and 60Hz, 3840x2160 in 25/30/50/60Hz
- Low power consumption
- 5 year limited warranty

openGear OG-US-5000

OG-US-5000-RM

Rear Module (2 slots)



- 1 x HDMI Output
- 1 x SDI Output
- 1 x HDMI input
- 1 x SDI output
- 1 x SDI input

How to Order

OG-US-4000-SET-1

OG-US-4000-MB +
OG-US-4000-RM

Related Products

OGX-FR-CN-P

openGear X frame with
advanced network card

OG-US-4000-SET-1

openGear based HDMI 2.0
Universal Scaler with genlock

OG-US-3500-SET-1

openGear based Universal
Scaler with genlock

OG-DA-HDTV-SDI-UHD-SET-1

openGear based HDMI 2.0 to
SDI converter without scaler

OG-SDI-HDTV-UHD-SET-1

openGear based 12G SDI to
HDMI 2.0 converter without
scaler

Specifications

Input	HDMI and SDI	Output	HDMI and SDI
Control	Dashboard	Genlock	Analog black burst via BNC