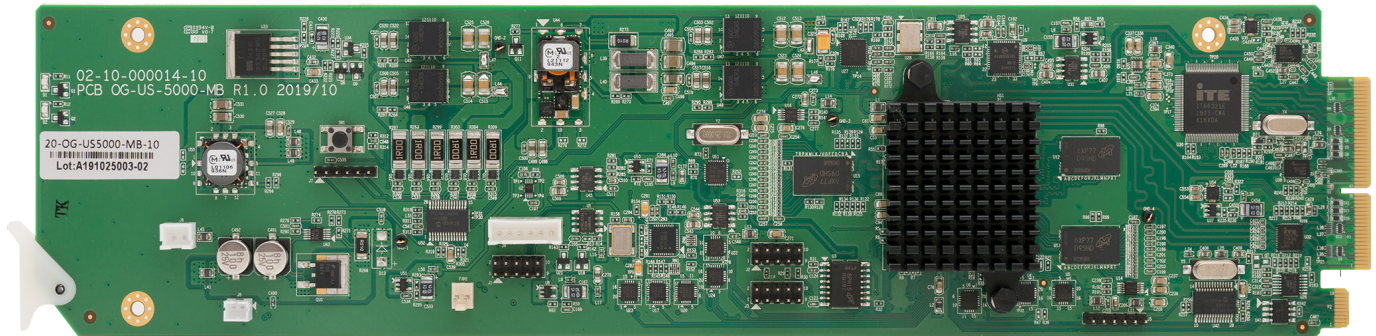


openGear

OG-US-5000

UHD (HDMI 2.0 and 12G SDI) Bi-directional Universal Scaler with Genlock



OG-US-5000

Key Features

- OGX/OG3 card-based form factor
- Dashboard control enabled
- Supports HDMI 2.0 and 12G SDI inputs
- Supports HDMI 2.0 and 12G SDI outputs
- SDI output supports 1080P, UHD (2160P), and 4K-DCI in 50 and 59.94Hz
- HDMI output supports 1080P in 50, 59.94Hz, UHD (2160P) in 30, 50, 59.94Hz and 4K-DCI in 50 and 59.94Hz
- Supports 8 channels of HDMI audio to SDI and vice versa
- Supports Genlock via openGear frame
- Scales any SDI input resolution to HDMI and SDI
- Scales any HDMI input resolutions to HDMI and SDI

OPENGEAR

OG-US-5000

OG-US-5000-RM



Rear Module (2 slots)

- 1 x HDMI input
- 1 x SDI input
- 1 x HDMI output
- 1 x SDI output
- 1 x Genlock

How to Order

OG-US-5000-SET-1

OG-US-5000-MB +

OG-US-5000-RM

Related Products

OGX-FR-CN-P

openGear X frame with advanced network card

OG-US-4000-SET-1

openGear based bi-directional Universal Scaler

OG-US-3500-SET-1

openGear based Universal Scaler with genlock

OG-DA-HDTV-SDI-II-SET-1

openGear based HDMI to SDI converter without scaler

OG-SDI-HDTV-SET-1

openGear based SDI to HDMI converter without scaler

Specifications

Input	HDMI and SDI	Output	HDMI and SDI
Control	Dashboard	Genlock	Analog black burst via BNC