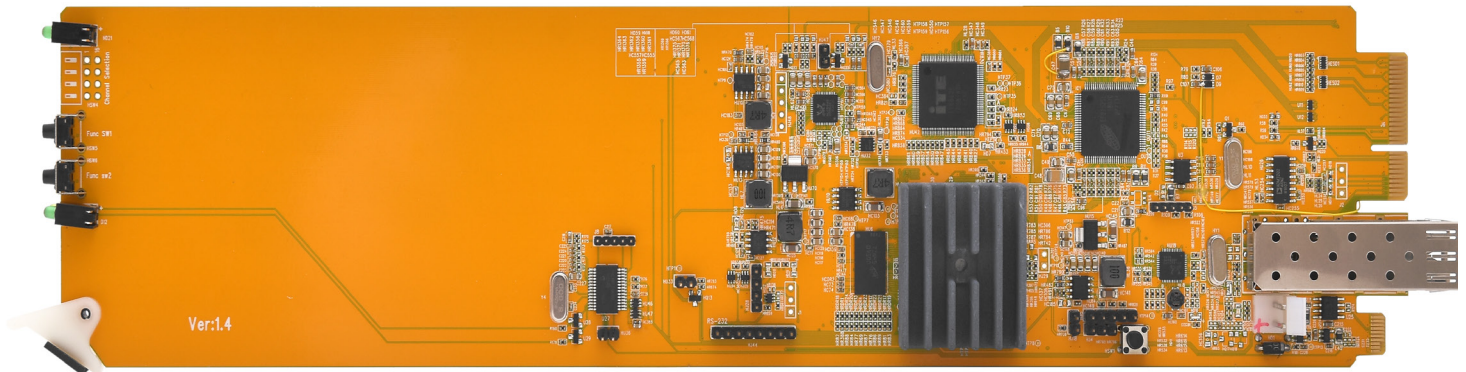


openGear

OG-KVM-IP-Tx-UHD

4K60 KVM Extenders with either copper or fiber output based on 1 Gig Ethernet



OG-KVM-IP-Tx-UHD-MB

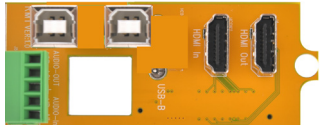
Key Features

- openGear 3.0/X card-based form factor
- Dashboard control enabled
- 10 cards can fit into an openGear OG-X frame
- Based on Gigabit Ethernet Technology (IGMP and Jumbo frame), outputs both copper or fiber
- Requires KVM-IP-Rx-UHD, KVM-IP-Rx-UHD-F
- Multi-mode Fiber - support up to 550m (OM2/OM3)
- Single-mode Fiber - Supports up to 10 km
- Copper - Supports up to 170 meters point to point extension with CAT6 cable
- Copper - Supports up to 100 meters when used with a GigE switch
- Supports point-to-point (unicast), point-to-multi-point (multicast) for audio/video distribution
- Perform similarly to an expandable KVM switch when bundled with a GigE switch
- Supports bi-directional stereo audio; embedded HDMI and external stereo input
- Supports RS-232 communication between Tx and Rx
- Built-in web-page for configuration
- Connection manager software for Tx/Rx management
- Supports resolutions up to 4096x2160@60Hz
- Advanced EDID management functionality. Built-in EDID, EDID pass through, copy EDID and sharing EDID
- Built-in scaler on the receiver
- Low power consumption - less than 10W

OPENGEAR

OG-KVM-IP-Tx-UHD

OG-KVM-IP-Tx-RM-UHD Rear Module (2 slots)



- 1 x HDMI 2.0 input
- 1 x HDMI 2.0 output
- 1 x USB 2.0 to connect to computer
- 1 x Transparent USB 2.0
- 1 x 4 pin for Audio in and out
- 1 x space for SFP (fiber or copper)

KVM over IP Receivers - Required to complete the system



KVM-IP-Rx-UHD



KVM-IP-Rx-UHD-F

How to Order

OG-KVM-IP-Tx-UHD-SET-1
OG-KVM-IP-Tx-UHD-MB +
OG-KVM-IP-Tx-UHD-RM

OG-KVM-IP-Tx-SET-2
1 x OG-KVM-IP-Tx-UHD-MB +
1 x OG-KVM-IP-Tx-UHD-RM +
1 x SFP-1G-RJ45

OG-KVM-IP-Tx-SET-3
1 x OG-KVM-IP-Tx-UHD-MB +
1 x OG-KVM-IP-Tx-UHD-RM +
1 x SFP-1G-Fiber

Related Products

KVM-IP-Rx-UHD
4K60 KVM over IP receiver

KVM-IP-Rx-UHD-F
4K KVM over IP receiver
that supports either fiber or
copper

Specifications

Models		OG-KVM-IP-Tx-UHD
Video	Input	HDMI 2.0
	Output	HDMI Loop out + SFP (Fiber or copper)
Audio	Input	2 of the 4 pin phoenix connector
	Output	2 of the 4 pin phoenix connector
USB	Tx Side	1 x Transparent USB Type B (Female), 1 x USB 2.0 Type B (Female)
System Link	Output	SFP (Fiber or copper)
Video Resolution		Up to 4096x2160@60Hz
Interconnect Cable		Standard CAT6/CAT6a/CAT7 network cable, single mode fiber or multi-mode fiber (OM2/OM3)
Maximum Copper Cable Length		120m point-to-point, 100m when connected to a switch
Maximum Fiber Cable Length		10 km on Single mode, 550m on multi-mode cables