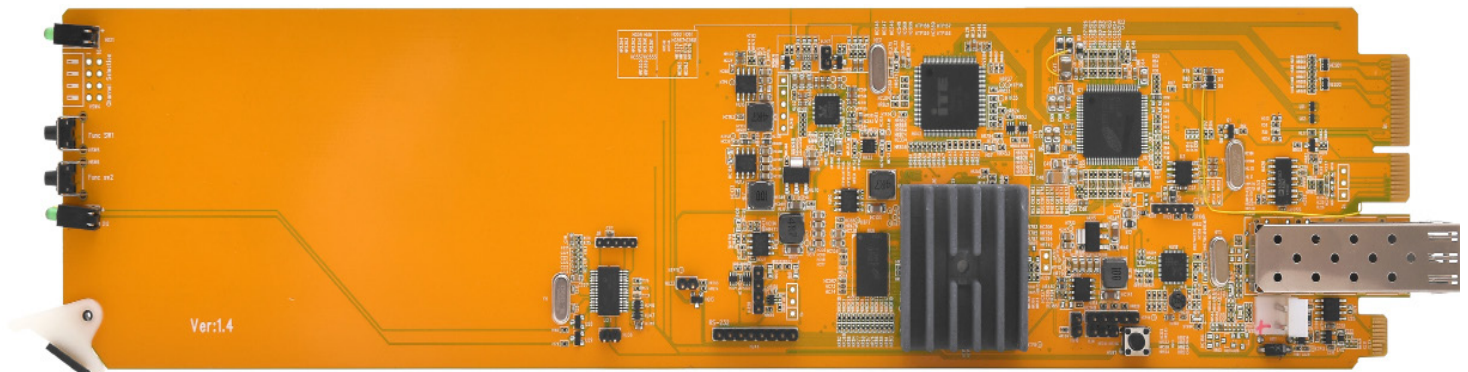


openGear

OG-KVM-IP-Tx

KVM Extenders with either copper or fiber output based on 1 Gig Ethernet

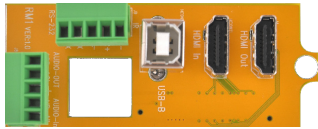


OG-KVM-IP-Tx-MB

Key Features

- openGear 3.0/X card-based form factor
- Dashboard control enabled
- 10 cards can fit into an openGear OG-X frame
- Based on Gigabit Ethernet Technology (IGMP and Jumbo frame), outputs both copper or fiber
- Requires KVM-IP-Rx, KVM-IP-Rx-P, KVM-IP-Rx-F to complete the system
- Multi-mode Fiber - support up to 550m (OM2/OM3)
- Single-mode Fiber - Supports up to 10 km
- Copper - Supports up to 170 meters point to point extension with CAT6 cable
- Copper - Supports up to 100 meters when used with a GigE switch
- Supports point-to-point (unicast), point-to-multi-point (multicast) for audio/video distribution
- Perform similarly to an expandable KVM switch when bundled with a GigE switch
- Supports bi-directional stereo audio; embedded HDMI and external stereo input
- Supports RS-232 communication between Tx and Rx
- Built-in webpage for configuration
- Connection manager software for Tx/Rx management
- Supports resolutions up to 3840x2160@30Hz
- Advanced EDID management functionality. Built-in EDID, EDID pass through, copy EDID and sharing EDID
- Built-in scaler on the receiver
- Plug and play and hot swappable cards

OG-KVM-IP-Tx-RM



Rear Module (2 slots)

- 1 x HDMI input
- 1 x HDMI output
- 1 x USB to connect to computer
- 1 x 4 pin for IR and RS232
- 1 x 4 pin for Audio in and out
- 1 x space for SFP (fiber or copper)

How to Order

OG-KVM-IP-Tx-SET-1

OG-KVM-IP-Tx-MB +
OG-KVM-IP-Tx-RM

OG-KVM-IP-Tx-SET-2

1 x OG-KVM-IP-Tx-MB +
1 x OG-KVM-IP-Tx-RM +
1 x SFP-1G-RJ45

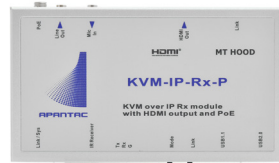
OG-KVM-IP-Tx-SET-3

1 x OG-KVM-IP-Tx-MB +
1 x OG-KVM-IP-Tx-RM +
1 x SFP-1G-Fiber

KVM over IP Receivers - Required to complete the system



KVM-IP-Rx-F



KVM-IP-Rx-P



KVM-IP-Rx

Related Products

KVM-IP-Rx-F

KVM over IP receiver with
fiber input

KVM-IP-Rx-P

KVM over IP receiver with
POE

KVM-IP-Rx

KVM over IP receiver that
supports HDMI, DVI and VGA
output

Specifications

Models		OG-KVM-IP-Tx
Video	Input	HDMI
	Output	HDMI Loop out + SFP (Fiber or copper)
Audio	Input	2 of the 4 pin phoenix connector
	Output	2 of the 4 pin phoenix connector
USB	Tx Side	USB Type B (Female)
System Link	Output	SFP (Fiber or copper)
RS-232 Baud Rate		2 of the 4-pin Phoenix connector up to 115,200 bps, full duplex
Video Resolution		Up to 3840x2160@30Hz
Interconnect Cable		Standard CAT6/CAT6a/CAT7 network cable, single mode fiber or multi-mode fiber (OM2/OM3)
Maximum Copper Cable Length		170m point-to-point, 100m when connected to a switch
Maximum Fiber Cable Length		10 km on Single mode, 550m on multi-mode cables