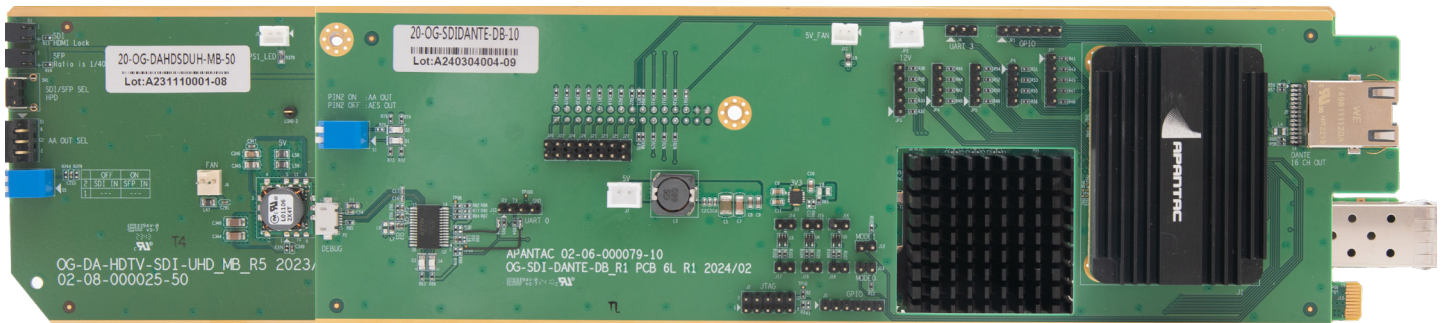


OG-DA-SDI-DE 12G Dante

12G SDI Audio Dante Deembedder



OG-DA-SDI-DE 12G Dante

Key Features

- OGX/3.0 card-based form factor
- Dashboard control enabled
- Supports up to 3840x2160p I/O
- Supports up to 12G SDI video input and loop out
- Converts SDI to HDMI for monitoring output
- De-embeds 12G/3G/HD-SDI and output 16 channels of Dante network audio
- Optional 12G SDI fiber input via SFP
- Low power consumption
- 5 year limited warranty

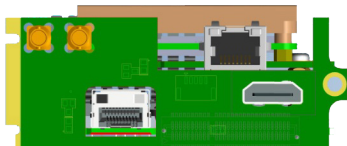
Specifications

Model	OG-DA-SDI-DE 12G Dante
Description	12G/3G/HD-SDI de-embedder with loop outs
Inputs	1 x 12G/3G/HD-SDI input, optional fiber input
Outputs	1 x 12G/3G/HD-SDI loop out, 1 x HDMI output that matches the SDI resolution,
Audio	16 channel of Dante output via RJ45
Control	Dashboard

OPENGEAR

OG-DA-SDI-DE 12G Dante

OG-DA-SDI-DE 12G-RM



Rear Module (2 slots)

- 1x SDI input
 - 1 x SDI loopout
 - 1 x HDMI output
 - 1x RJ45 network Dante audio output
 - Optional Fiber
-

How to Order

OG-DA-SDI-DE 12G-SET-1
OG-DA-SDI-DE 12G-MB +
OG-DA-SDI-DE 12G-RM

OG-DA-SDI-DE 12G-SET-2
OG-DA-SDI-DE 12G-MB +
OG-DA-SDI-DE 12G-RM +
SFP-SDI-12G-Rx

Related Products

DA-SDI-DE 12G
Standalone 12G audio de-
embedder

OGX-FR-CN-P
openGear X frame with
advanced network card