

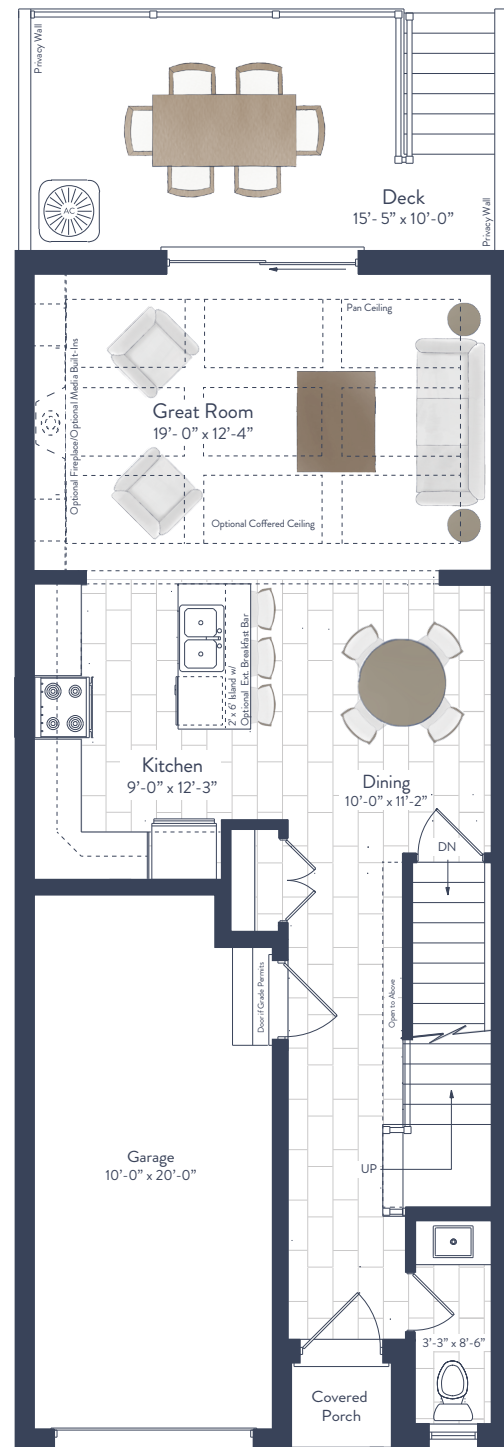
THE MELVILLE

1,604 SQ. FT.

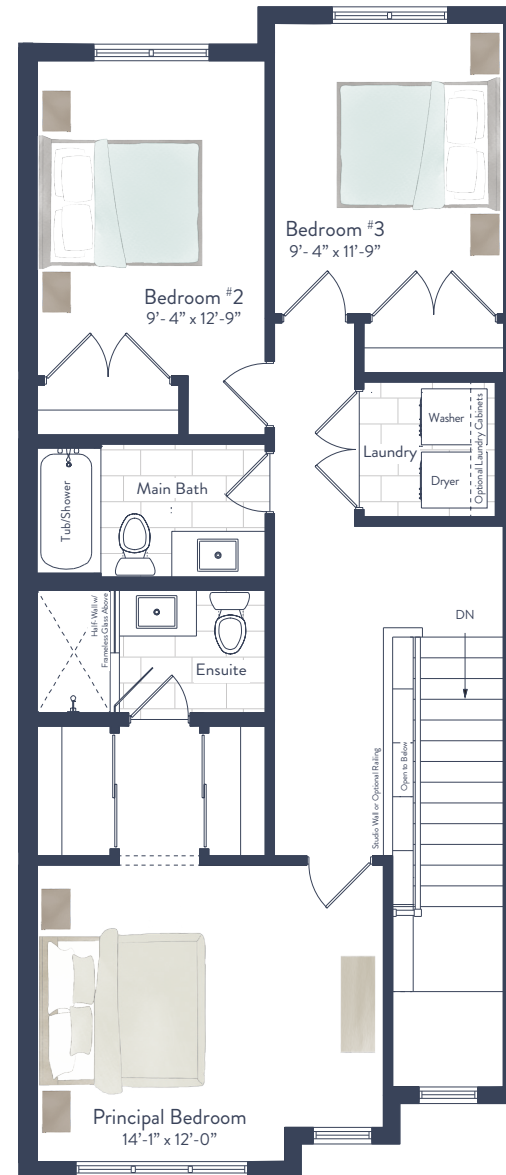
BEDROOMS:
3

BATHROOMS:
2.5

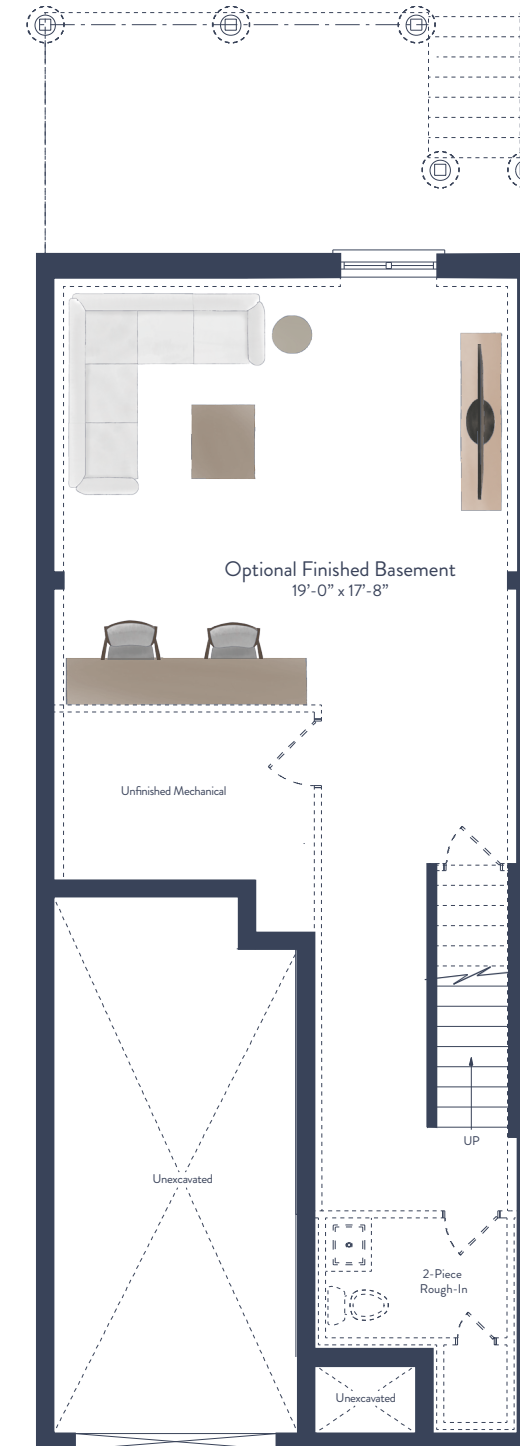
PARKING:
2



MAIN LEVEL
719 Sq. Ft.



UPPER LEVEL
885 Sq. Ft.



BASEMENT

All drawings and renderings are an artist's concept and may vary slightly from the final product. E. & O.E. Actual usable floor space may vary from stated area, and square footage has been calculated based on usable living space according to the Tarion rules. Drawings may show optional features which may not be included in the base price. Bulkheads and box outs may be required as chases for plumbing and mechanical. Location of mechanical room equipment will be located by the builder and may change based on plan. Garage man door location may vary subject to grade. Number of steps in front entry, rear entry (if applicable) and garage entry may vary based on grade. Actual finishes may differ from what is shown in rendering.

