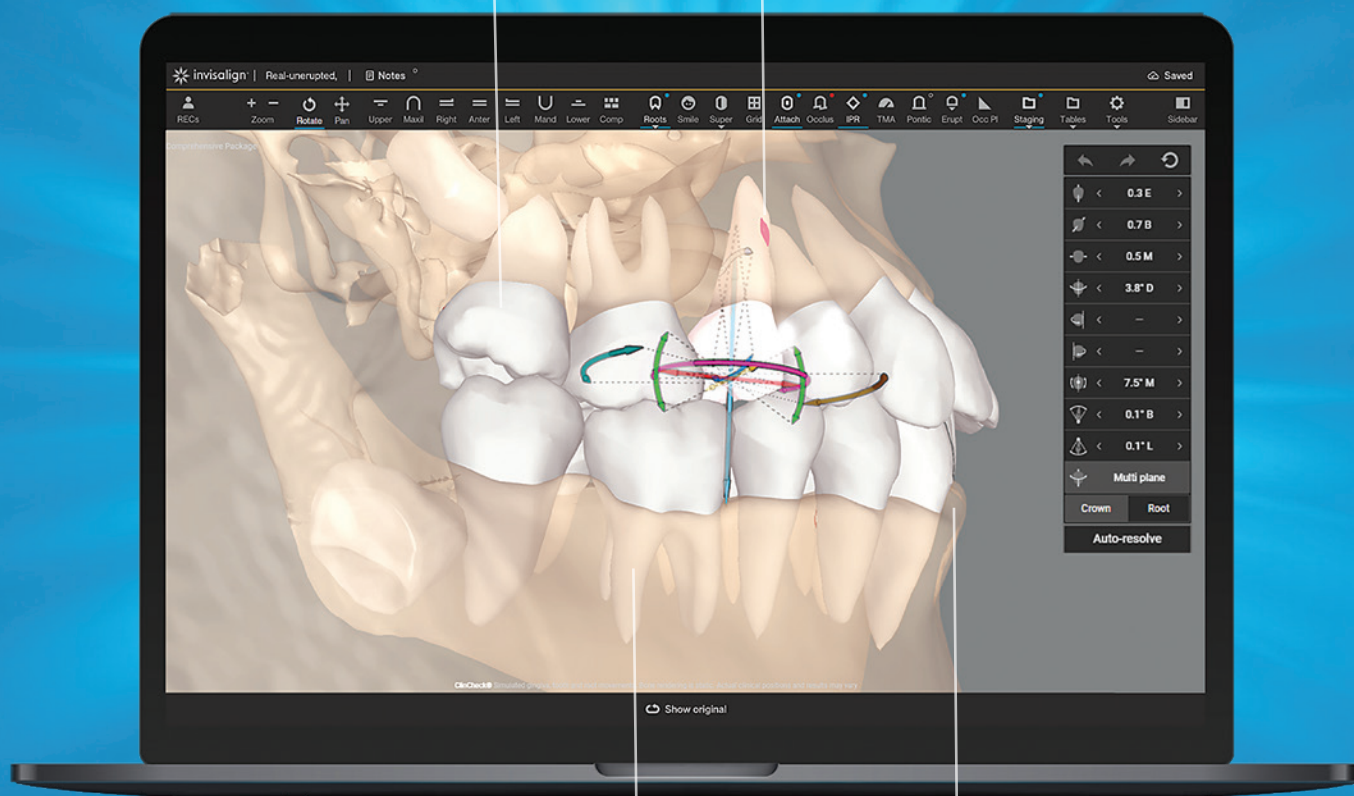


See more, treat more comprehensively with CBCT integration in ClinCheck® Pro 6.0 software.

Automatically generated 3D model
of crowns, roots, and bone

Easy-to-use interface allows doctors to
adjust and tailor course of treatment and
proactively prevent unwanted issues



Real root renderings

Bone visualizations based
on actual scan data

ClinCheck Pro® 6.0 now enables you to see a patients' roots, crowns and bone during treatment planning with new CBCT integration. The treatment planning software you know and trust is powered by the data of more than 12 million smiles transformed¹ so you can confidently and more comprehensively treat patients.

¹ Data on file at Align Technology, December 31, 2021

How it works

CBCT integration in your ClinCheck® Pro 6.0 setup allows you to work in one integrated platform.

Roots only



Upload a patient's CBCT DICOM scan file and submit with the Rx form.

Roots with semitransparent bone



Patient data is digitally-fused into one 3D model in the ClinCheck treatment plan.

Roots and bone



Choose "Roots" on the ClinCheck software toolbar to view roots and bone visualization.

Key benefits

CBCT integration for ClinCheck Pro 6.0:

- + Maximizes the efficiency of powerful ClinCheck tools like 3D Controls.
- + Shows you real root renderings and bone visualizations based on actual scan data.
- + Helps you leverage your expertise across a broad range of malocclusions.
- + Simulates root movement along with tooth movement in the same view.
- + Helps you tailor a more informed ClinCheck treatment plan.



> To learn more about CBCT integration in ClinCheck Pro 6.0, visit [Invisalign.com/provider/CCPro6.0](https://www.invisalign.com/provider/CCPro6.0)

align™

© 2022 Align Technology, Inc. All Rights Reserved. Align, the Align logo, Invisalign, the Invisalign logo, iTero, iTero Element, and ClinCheck, among others, are trademarks and/or service marks of Align Technology, Inc. or one of its subsidiaries or affiliated companies and may be registered in the U.S. and/or other countries. A003488 Rev B

 **invisalign®**
Transforming smiles, changing lives.