

EXPAND

the potential of your practice

Discover new possibilities with the iTero Element® Plus Series.

The latest innovation

Advanced digital scanning performance that delivers a seamless scanning experience. The iTero Element Plus Series builds upon the success of the iTero Element platform and takes your practice to the next level by enhancing digital adoption, productivity, and the patient experience.

INVISALIGN®

Return on investment

The iTero® intraoral scanner can pay for itself in

<6
months¹

Preventive

Go beyond just digital impressions and add value to every patient visit.

Restorative

iTero intraoral scanners can make restorative workflows easier, offering proven accuracy to aid in your clinical restorative needs.²

Orthodontic

iTero intraoral scanners provide seamless integration for Invisalign® treatment with optimized digital workflows from case acceptance to lifelong patient monitoring.



1. Study sponsored by Align Technology. An independent evaluation of iTero Element orthodontists: 12 case increase projected across the first 12 months post-scanner introduction = \$66,000 USD** in Invisalign cases 33 case increase projected across first 24 months post-scanner introduction = \$181,500 USD** in Invisalign cases. On this basis, the iTero Element scanner can pay for itself in <6 months.*
*Valuation based on \$5,500 USD Invisalign Case Fee. Median case fee Invisalign treatment often \$3,000 USD to \$8,000 USD in the United States per Invisalign.com website.
**Retrospective data evaluation and quantitative analysis completed by Dr. MacKay, University of Memphis. 495 Orthodontic practices worldwide. Accepted for publication Journal of Clinical Dentistry.

2. Accuracy defined as a combination of trueness and precision tested on different substrates, under different lighting conditions, for crown preparation and full-arch scanning. Based on the results of 10 peer-reviewed papers 2018-2020. Data on file at Align Technology, as of April 6, 2020.

iTero®

Scan. Show. Amaze.

The iTero Element® 5D imaging system gives you and your patients a comfortable scanning experience with no harmful radiation.³ With just one scan, enhanced visualization tools make it easy to understand your assessment of their oral health and their treatment plan.

When introducing NIRI technology (aids in interproximal caries detection) into their practice, surveyed doctors reported that they increased:

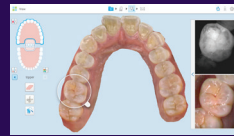
Treatment acceptance by 71%⁴

An average of **60% of patients**

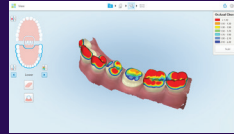
that were shown an Invisalign Outcome Simulation on the iTero® scanner started Invisalign treatment.⁵

100% of surveyed users

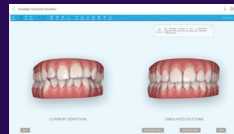
agree that the iTero Element 5D scanner enables better patient education and understanding of their oral health, leading to an increase in patient acceptance of treatment plan.⁶



Aid in the detection of interproximal caries above the gingiva with iTero's near-infrared imaging technology, **NIRI**



Explain the severity of patient malocclusions with **Occlusogram**



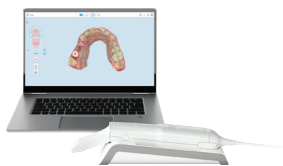
Show patients their potential future smiles with **Invisalign® Outcome Simulator**



Show the progress of their treatments and conditions with **iTero TimeLapse** visuals



Show patients what their **restorative outcomes** could look like⁷



iTero Element Flex™ Restorative Foundation intraoral scanner



iTero Element® 2 intraoral scanner



iTero Element® 5D imaging system



iTero Element® 5D Plus imaging system in cart configuration



iTero Element® 5D Plus imaging system in mobile configuration

Learn more about the full iTero portfolio at iTero.com or contact your territory manager.

3. Data on file at Align Technology, as of December 4, 2018.

4. Based on a survey in May of 2019 of n=15 practitioners who participated in a global limited market release, working with iTero Element 5D for an average period of 6 months, representing both GPs and Orthos in CAN, EU and APAC, who were presented with a level of agreement scale from strongly agree to strongly disagree with the following statements: "Incorporating the iTero Element 5D scanner into my current diagnostic protocol, I experienced an increase in the number of accepted caries treatments by my patients at my practice," and then asked to estimate the average increase. Data on file at Align Technology, as of November 15, 2019.

5. Based on a survey of n=101 Orthodontists and General Dentists (from U.S., Canada and U.K., in July 2018; GP=60, Ortho=41) who used the Invisalign Outcome Simulator in the past year and were asked, "For the patients who were presented the option of Invisalign treatment in the past 12 months, and for whom you have used the Invisalign Outcome Simulator, what percentage of these patients started Invisalign treatment?"

6. Based on a survey in May of 2019 of n=15 practitioners who experienced working with iTero Element 5D for an average period of 6 months, representing both GPs and Orthos in CAN, EMEA and APAC, who were presented with a level of agreement scale from strongly agree to strongly disagree with the following statement: "The Imaging and visualization capabilities of iTero Element 5D scanner are designed to enable better patient education that lead to better patient understanding of their oral health." Data on file at Align Technology, as of November 15, 2019.

7. This feature requires the use of additional software sold separately and may not be available in your market.



© 2021 Align Technology, Inc. All Rights Reserved. Invisalign, iTero, iTero Element, the iTero logo, among others, are trademarks and/or service marks of Align Technology, Inc. or one of its subsidiaries or affiliated companies and may be registered in the U.S. and/or other countries. | MKT-0007374 Rev A

it starts with **iTero®**