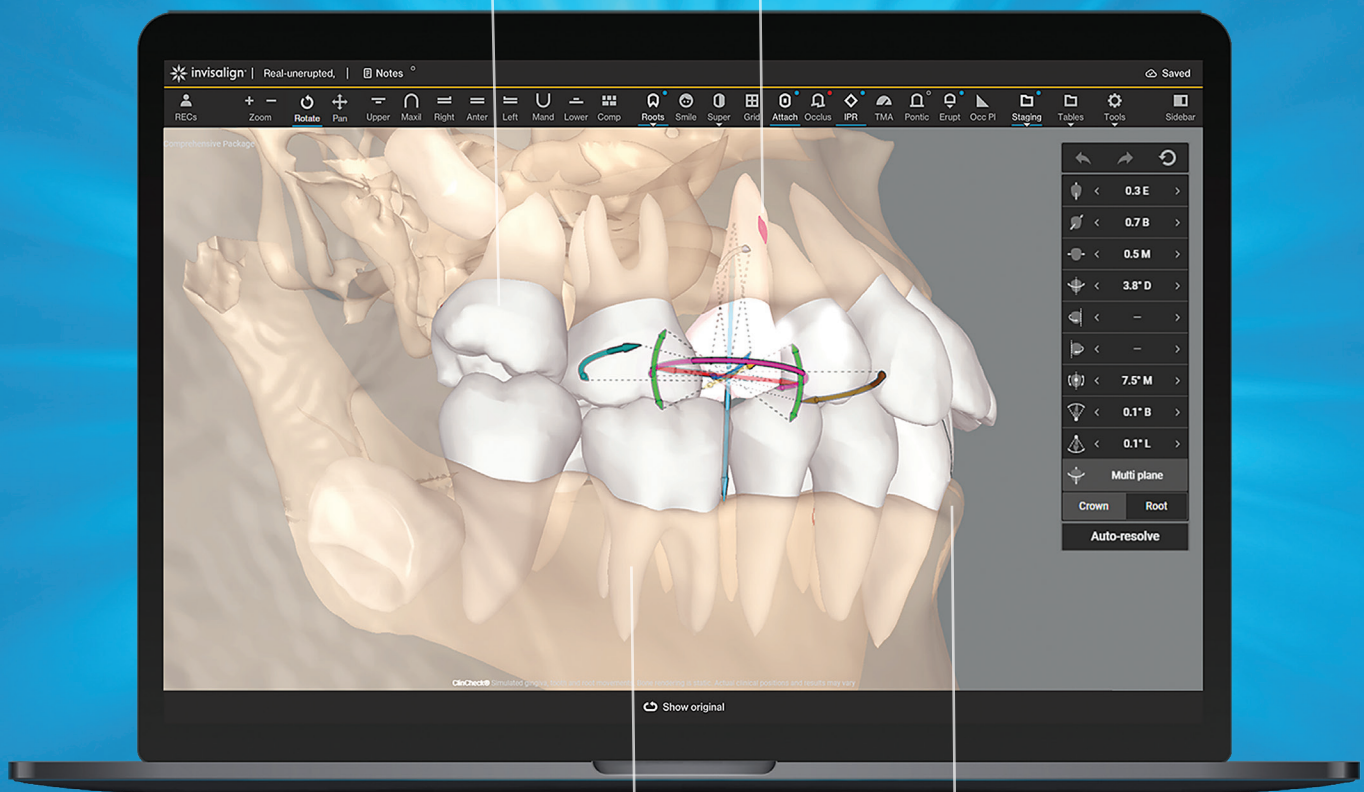


invis is seeing more with CBCT integration.

Automatically generated 3D model
of crowns, roots, and bone

Easy-to-use interface allows doctors to
adjust and tailor course of treatment and
proactively prevent unwanted issues



Real root renderings

Bone visualizations based
on actual scan data

Capture and analyze data for making a more informed decision in treatment planning

CBCT integration for ClinCheck® software helps you see patients' roots, crowns and bone in one auto-generated 3D model and confidently treat a wide range of cases.

How it works

CBCT integration in your ClinCheck® Pro 6.0 setup allows you to work in one integrated platform.

Upload a patient's CBCT DICOM scan file and submit with the Rx form



Roots only

Patient data is digitally-fused into one 3D model in the ClinCheck treatment plan



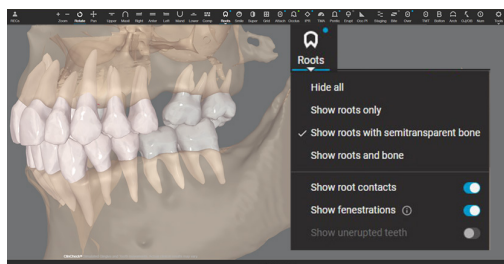
Roots with semitransparent bone

Choose "Roots" on the ClinCheck software toolbar to view roots and bone visualization



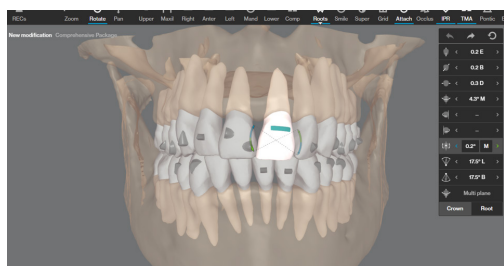
Roots and bone

Key benefits



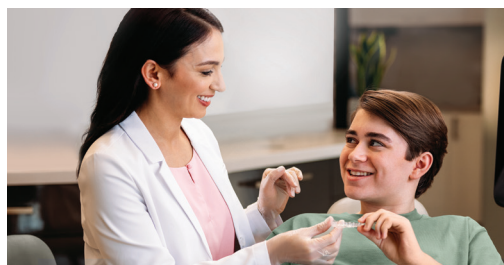
Easy to see, easy to use.

The user-friendly, intuitive interface shows you greater detail to guide treatment planning and helps maximize the efficiency of powerful ClinCheck tools like 3D controls.



Customized treatment planning.

Real root renderings and bone visualizations based on actual scan data help you confidently tailor a more-informed ClinCheck treatment plan based on your experience and your patients' needs.



Confidently expand care.

Leverage your expertise to treat a broad range of malocclusions, including surgical, restorative, expansion/extraction, as well as teen cases with impacted or unerupted teeth*.

➤ Explore CBCT in your ClinCheck software or contact your Align rep for more information.

align™

*Please reference A001623 Rev A for full details about CBCT data integration and simulations in the ClinCheck® treatment planning process

Align Technology Switzerland GmbH, Suurstofli 22, 6343 Rotkreuz, Switzerland

© 2022 Align Technology Switzerland GmbH. All Rights Reserved. Invisalign, ClinCheck and SmartTrack, among others, are trademarks and/or service marks of Align Technology, Inc. or one of its subsidiaries or affiliated companies and may be registered in the U.S. and/or other countries. | A005714 Rev A

 **invisalign®**
Transforming smiles, changing lives.