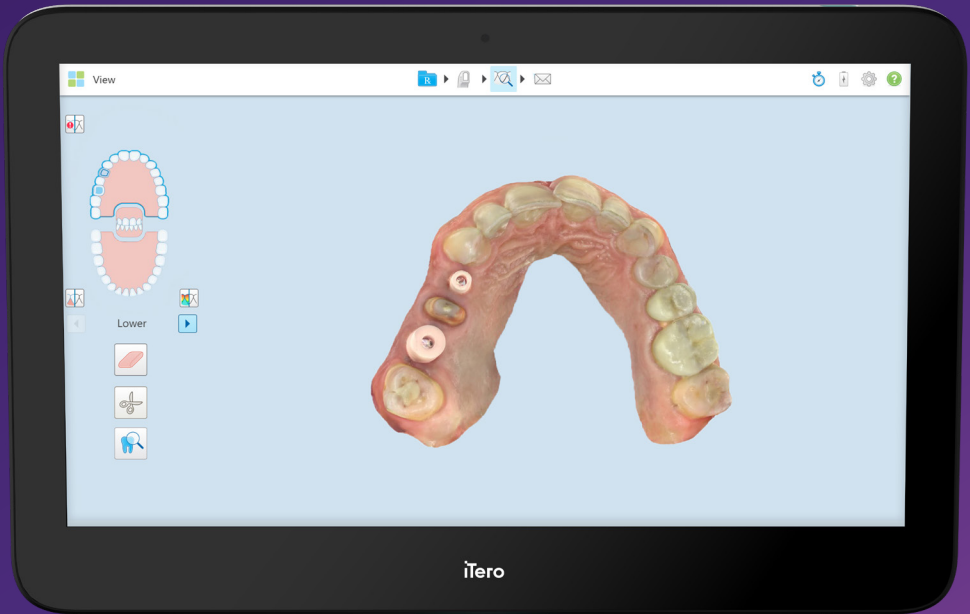


EXPAND

the potential of your practice



it starts with iTero

Industry defining clinical excellence.

Preventive

Go beyond digital impressions and add value to every patient visit.

iTero intraoral scanners deliver:

Efficiency

- Complete a scan in as few as 60 seconds¹
- Keep patients' scan history to complement your patient oral health monitoring

Diagnostic and monitoring tools

- iTero NIRI technology in the iTero Element 5D and 5D Plus imaging systems is comparable to bite-wing x-rays (BWx) in aiding the detection and diagnosis of interproximal caries lesions above the gingiva²
- Occlusogram tool enables occlusion assessment
- Integrated 3D intraoral camera for hygiene evaluations
- TimeLapse functionality to analyze changes in oral health over time

Restorative

iTero intraoral scanners make restorative treatments easy and effective, offering proven accuracy and open architecture interface.

iTero scans have been used in more than 10 million restorations, from crown & bridges, implants to dentures³

iTero intraoral scanners give you:

Accuracy

- Accurate marginal fit scans
- Accurate full-arch scans



Based on more than 12 independent and clinical scientific studies.
[iTero Compendium](#)

AI³ scan assistance

- Auto-margin marking suggestion tool
- Auto-trimming of excess tissue

Full treatment scope

- Fixed, removable, and implant prosthetics, from single crowns to full edentulous

Open and seamless connectivity

- Open STL format allows interoperability with your treatment planning and restorative workflows
- 10,000+ iTero enabled dental laboratories⁴
- Connectivity with exocad software for facilitating chairside and laboratory workflows

One iTero scan. That's all it takes to get a 3D image of your patient's dentition, discover possible interproximal caries, run a simulation of their future smile, see patient's treatment progress, and much more. In addition, the unrivalled connectivity with exocad software and Invisalign applications will make you and your teams', patients' and laboratory technician's experience a great one.

Orthodontic

iTero intraoral scanners provide seamless integration for Invisalign treatment with optimized workflows from pre-case acceptance through patient monitoring.

With iTero intraoral scanners, you can:

- Utilise a highly integrated and comprehensive Invisalign workflow
- Save time with the auto-upload functionality⁴ which allows Invisalign cases to be submitted without the need for intraoral photos
- Track progress with the Invisalign Progress Assessment
- Plan faster with ClinCheck treatment planning

And perform treatments like:

- Invisalign Treatment
- Invisalign Go

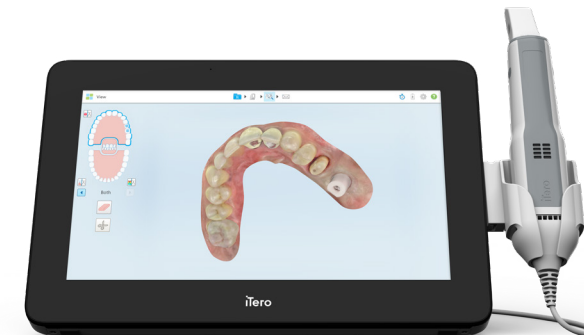
Simulators

- Simulate the future smiles of your patients using the Invisalign Outcome Simulator

Ortho-Restorative

45% of prosthodontic procedures could benefit from pre-treatment tooth alignment.⁵

Comprehensive intraoral scanner



¹Data on file at Align Technology, as of June 30, 2021

An iTero digital practice is a growing practice.

iTero intraoral scanners redefine doctor and patient experiences in the chair and beyond.

Attract more patients

iTero scanners allow you to position your practice as modern and high-end, making it more attractive in the eyes of prospective patients.

Save time and money

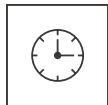
Thanks to NIRI technology and the built-in intraoral camera, you can capture 3 sets of data with just one scan and thus save precious chair time. There's no need to buy, maintain or reprocess a stand-alone device. And the MyiTero.com platform will help you with efficiency as it allows you to access the scans from anywhere at any time.

Patient conversation

With unmatched visualisation technology, you can help your patients fully understand their conditions and their treatment options. Beyond the chair, use the iTero Scan Report to email your patients with their diagnosis, resulting in more patients saying "yes" to treatments.

Monitoring and retention

Stay connected to patients throughout treatment, monitoring their progress and achieving the best possible results, encouraging your patients to keep coming back.



Intraoral camera ROI

The integrated 3D intraoral camera contributes to an average time savings of **11 minutes** per patient⁷

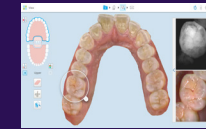


iTero Near infrared imaging (NIRI) ROI

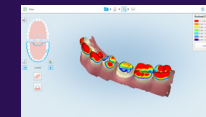
When incorporating the iTero Element 5D scanner into their practice, surveyed doctors reported that they increased business revenue by **34%**⁸

Scan. Show. Amaze.

iTero intraoral scanners give you and your patients a comfortable scanning experience.⁹ Enhanced visualisation tools make it easy to understand your assessment of their oral health and their treatment plan.



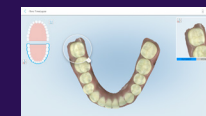
iTero NIRI technology demonstrated 96% accuracy in detecting dentinal interproximal caries when compared to bite wing x-ray (BWx) and is without harmful radiation¹².



Explain the severity of patient malocclusions with the **Occlusogram** tool.



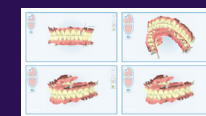
Show patients their potential future smiles with **Invisalign Outcome Simulator**.



Show the progress of their treatments and conditions with **iTero TimeLapse** visuals.



Take snapshots of any of the visuals and **annotate** directly on them.



Let your patients share the excitement with their family and friends using the **iTero Scan Report**.



Use **exocad's Smile Creator Software** to show your patients the restorative treatment outcome.

When introducing the iTero Near infrared imaging (NIRI) technology (aids in interproximal caries detection) into their practice, surveyed doctors reported that they increased:

Treatment acceptance by 71%¹⁰

An average of

60% of patients that were shown an Invisalign Outcome Simulation on the iTero scanner started Invisalign treatment.¹¹

Adding value throughout your **digital** workflow.

The iTero scanner is an open system that allows you to work efficiently with your lab or produce chairside restorations.

Adoption and Integration

Throughout your digital journey, **Align partners** with you via:

- Technical teams
- Clinical trainers
- 1 on 1 training sessions
- Digital adoption experts in your local language

Productivity and Connectivity

iTero is a true **open digital platform** with seamless connectivity to:

- Dental laboratories that receive your iTero scan within minutes¹³
- Unlimited cloud storage
- Restorative partners (Zimmer Biomet, Digital Smile Design)
- Any CAD/CAM software for chairside milling workflow
- Various dental practice management systems integrations

Expanding your workflow with exocad software

- Interoperability with exocad suite of applications
- Digital tools and technology to guide and assist you from pre-acceptance to monitoring to patient retention

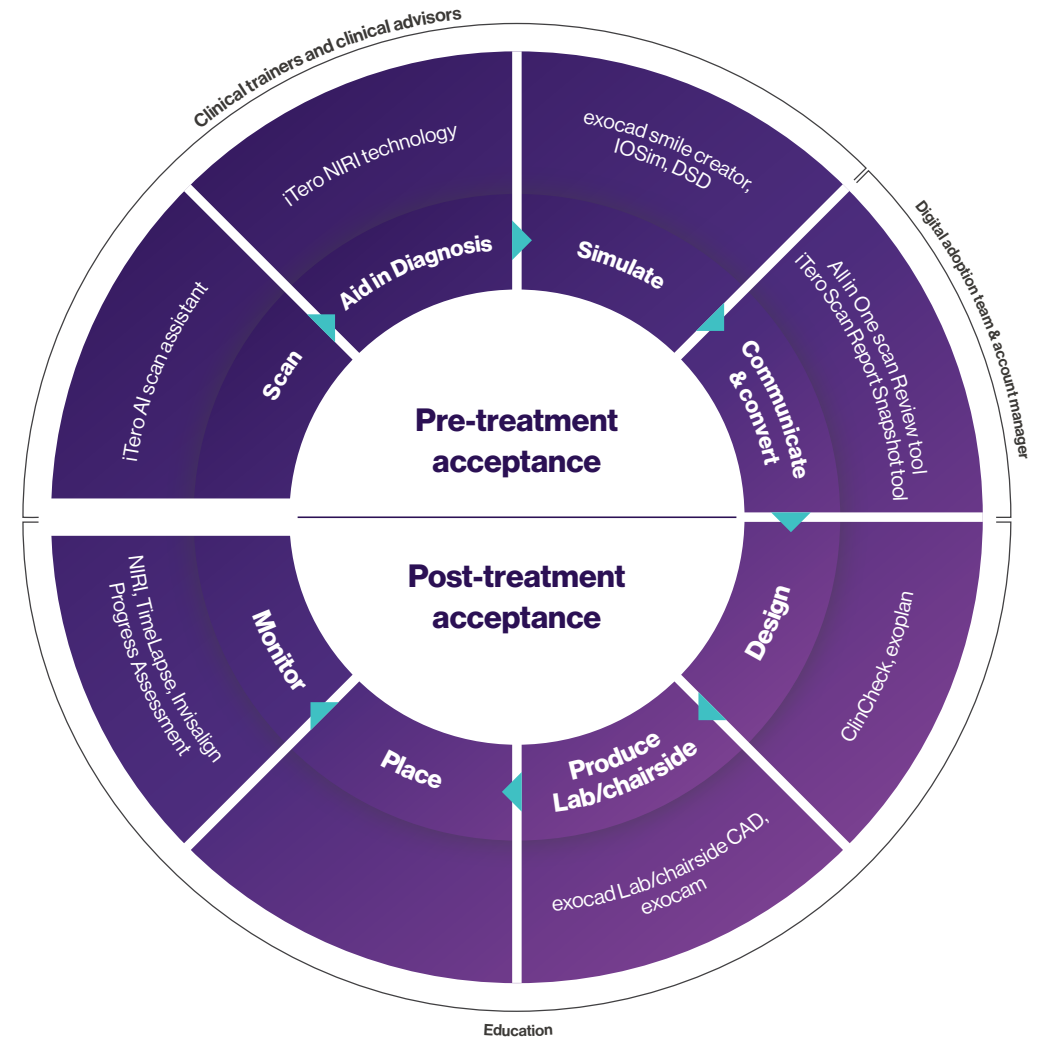
Safe investment

With the iTero Service Plan you get regular software enhancements and related trainings, and are secured against any unexpected events with a broad warranty program. The iTero Service Plan is a complete solution that lets you stay on the cutting edge of innovation and continue the digitisation journey over the years.



MyiTero.com

Your cloud based platform, accessible anywhere anytime, to support you with case management and dental lab communication.



iTero element

- ¹ Patient scans can be completed in as little as 60 seconds with the same accuracy and reliability that you have come to expect from iTero element scanners. Actual scan times depend on individual experience.
- ² Based on a multisite clinical study conducted in real world settings comparing iTero NIRI technology (Near Infra-red imaging) of the iTero Element 5D to bite-wing x-rays (BWIX) (n= 3,502 posterior proximal tooth surfaces out of 5,796 proximal surfaces in 102 patients) as a tool in aiding in detection and diagnosis of interproximal caries above the gingiva.)
- ³ Accuracy defined as a combination of trueness and precision tested on different substrates, under different lighting conditions, for crown preparation and full-arch scanning. Based on the results of 10 peer-reviewed papers 2018-2020. Data on file at Align Technology, as of April 6, 2020
This is based on 40 iRecord scanning sessions with average scan time of 58 seconds by 2 experienced persons scanning. Data on file at Align Technology, as of February 10, 2017.
- ⁴ Only available on iTero Element 5D Plus imaging system and iTero Element 5D Plus imaging system Lite software configuration.
- ⁵ Data on File at Align Technology as of Sept 20, 2017. Based on survey data of current Dental Practitioners in the USA, doctors (n=251) were asked "What percent of the patient cases for prosthodontic procedures (ie veneers, implants, bridges, partials) would have benefitted from a better initial position of the teeth?" (n=251). An average of 45% was developed from the doctor's responses.
- ⁶ Study sponsored by Align Technology. An independent evaluation of iTero Element orthodontists: 12 case increase projected across the first 12 months post-scanner introduction = \$66,000* in Invisalign cases 33 case increase projected across first 24 months post-scanner introduction = \$181,500** in Invisalign cases
On this basis, the iTero Element scanner can pay for itself in <6 months.
*Valuation based on \$5,500 Invisalign Case Fee. Median case fee Invisalign treatment often \$3,000 to \$8,000 in the United States per Invisalign.com website.
**Retrospective data evaluation and quantitative analysis completed by Dr. MacKay, University of Memphis. 495 Orthodontic practices worldwide. Accepted for publication Journal of Clinical Dentistry.
- ⁷ Based on a survey in Feb of 2021 of n = 16 practitioners who participated in a global limited market release, working with iTero Element 5D Plus for an average period of 2 months, representing both GPs and Orthos in NA, EU and APAC, who were presented with a level of agreement scale from strongly agree to strongly disagree with the following statements: - "The integrated 3D intraoral camera saves me time", and then asked to estimate the average minutes saved per patient compared to using a stand-alone intraoral camera." - "The enhanced viewing experience of the iTero Element Plus scanner significantly contributes to increase patient acceptance for treatment.")
- ⁸ Based on a survey in May of 2019 of n = 15 practitioners who participated in a global limited market release, working with iTero Element 5D for an average period of 6 months, representing both GPs and Orthos in CAN, EU and APAC, who were presented with a level of agreement scale from strongly agree to strongly disagree with the following statement: "Incorporating the iTero Element 5D scanner into my current diagnostic protocol, I experienced an increase in treated interproximal caries cases on my patients at my practice", and then asked to estimate the average increase in revenue for the practice. Data on file at Align Technology, as of November 15, 2019.
- ⁹ Data on file at Align Technology, as of December 4, 2018*
- ¹⁰ Based on a survey in May of 2019 of n = 15 practitioners who participated in a global limited market release, working with iTero Element 5D for an average period of 6 months, representing both GPs and Orthos in CAN, EU and APAC, who were presented with a level of agreement scale from strongly agree to strongly disagree with the following statements: "Incorporating the iTero Element 5D scanner into my current diagnostic protocol, I experienced an increase in the number of accepted caries treatments by my patients at my practice", and then asked to estimate the average increase. Data on file at Align Technology, as of November 15, 2019.
- ¹¹ Based on a survey of n=101 Orthodontists and General Dentists (from U.S., Canada and U.K, in July 2018; GP=60, Ortho=41) who used the Invisalign Outcome Simulator in the past year and were asked, "For the patients who were presented the option of Invisalign treatment in the past 12 months, and for whom you have used the Invisalign Outcome Simulator, what percentage of these patients started Invisalign treatment?"
- ¹² Based on a multisite clinical study conducted in real world settings comparing iTero NIRI technology (Near Infra-red imaging) of the iTero Element 5D to bite-wing x-rays (BWIX) (n= 3,502 posterior proximal tooth surfaces out of 5,796 proximal surfaces in 102 patients) as a tool in aiding in detection and diagnosis of interproximal dental caries above the gingiva; Accuracy means the % agreement between the diagnoses from the BWIX and NIRI, calculated as [Total agreements] / [Total surfaces] % = [56 (true positive) + 3338 (true negative)] / 3502 = 96.9%
- ¹³ Based on 10,000 scans, mean transfer time, defined as the time between the practice sending the iTero scan and the dental laboratory receiving it, is 4.6min. May vary based on internet connection. Data on file at Align Technology, as of February 12, 2020.