



535 Mission Street



Space availability summary

WeWork @ 535 Mission Street
San Francisco, CA

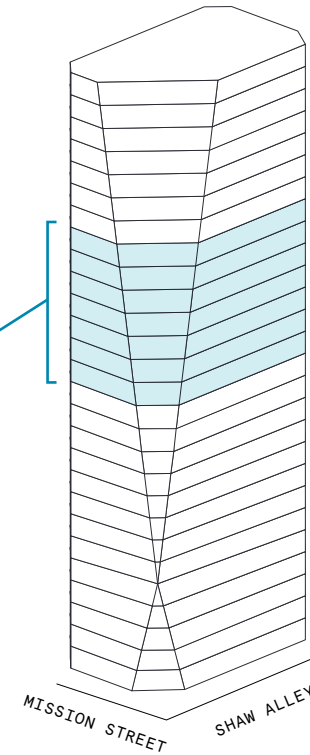
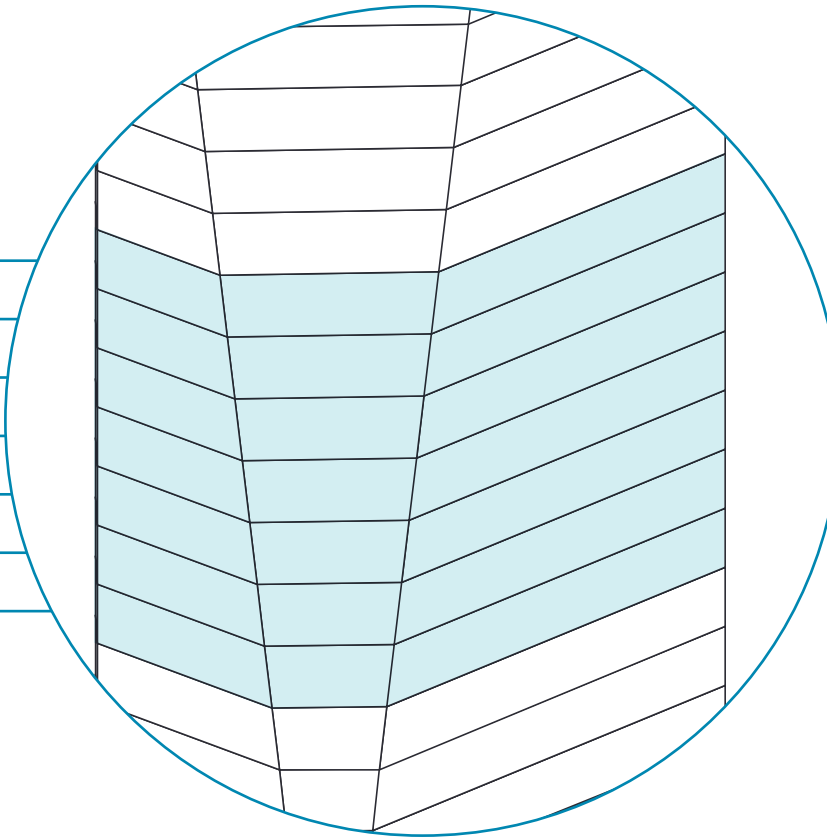
wework

[VIEW VIRTUAL TOUR](#)

20th Floor 13,706 RSF
19th Floor 13,710 RSF
18th Floor 13,851 RSF
17th Floor 14,216 RSF
16th Floor 14,534 RSF
15th Floor 14,738 RSF
14th Floor 6,756 RSF

91,511 RSF

TOTAL WEWORK RSF



535 Mission Street

At a glance

Workspaces designed for productivity and creativity with flexible size & term

Dedicated, private offices available from 68 to 5,302 RSF

Move-in ready offices furnished & wired

27

TOTAL BUILDING FLOORS

307,235

TOTAL BUILDING SQ FT

All dimensions are approximate and subject to variances. It is your obligation to independently verify the particulars of the property. WeWork reserves the right to make changes.



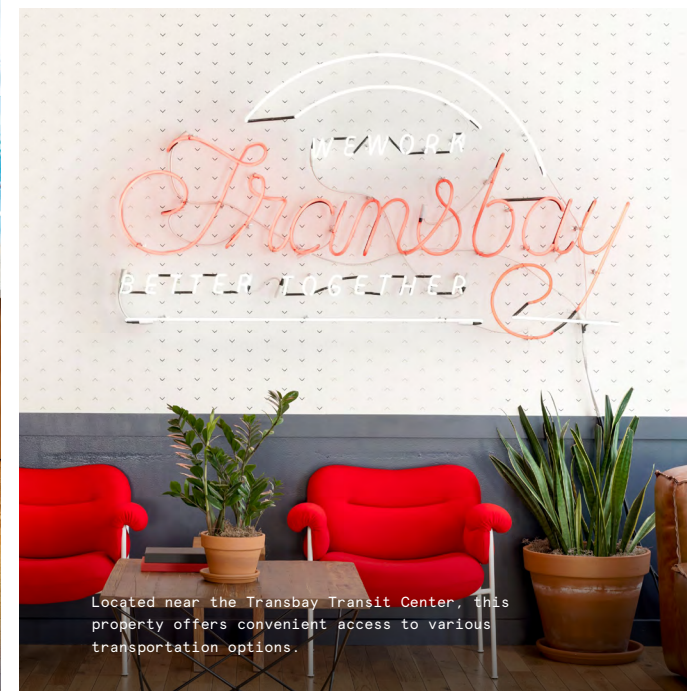
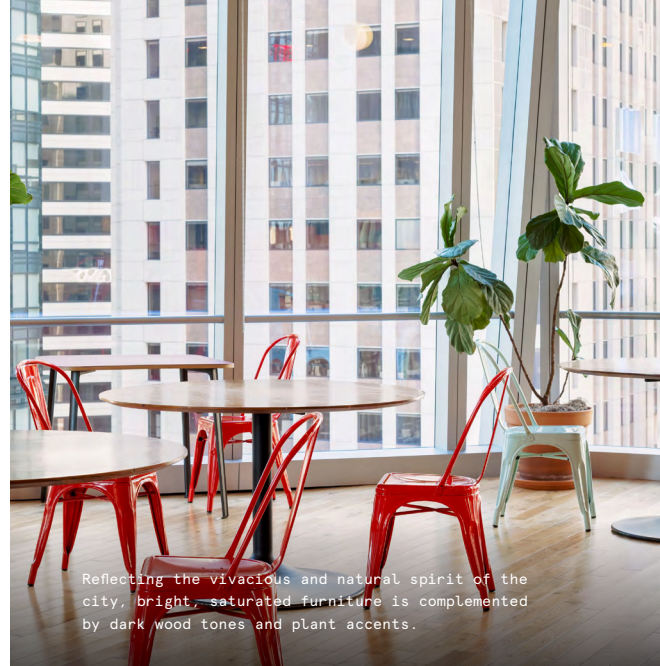
Contemporary, refined and picturesque

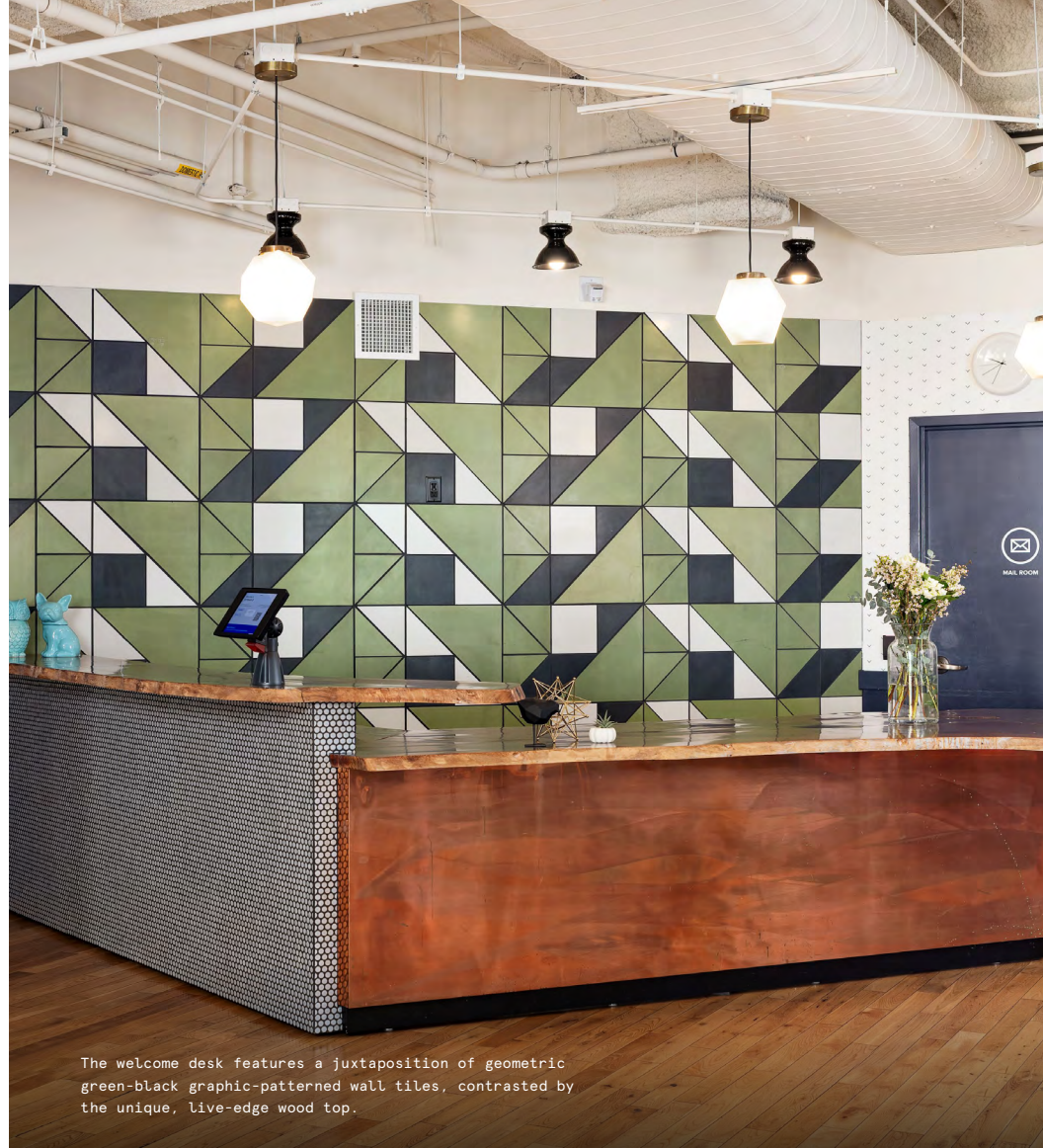
Named by the San Francisco Chronicle as “an urbane addition to the vertical scene,” 535 Mission Street's tapered-shaped, glass-façade tower was conceived by acclaimed HOK Architects. Located in the thriving South of Market (SoMa) district, the center of the booming technology scene, this Class A property is the first commercial office building in San Francisco with LEED Platinum Core and Shell certifications. WeWork's flexible workspaces has sprawling views of the San Francisco Bay and downtown skyline.

Inspired by lively California culture

535 Mission Street presents a sensible aesthetic, referencing a Californian motif alongside thoughtful details at this premium location.

- The interiors combine industrial-style design elements with a delicate selection of natural finishes local to California, such as the live-edge wood top, and the copper details of the community bar
- The calmness of the dark walnut wood flooring alongside leather sofas and lounge chairs is refreshed with graphic-patterned, vibrant wallcoverings, ottomans, and rugs
- Curated selections of custom artwork in saturated, bright colors punctuate the space, including a bright pink Transbay neon sign in the main lounge
- Thoughtfully designed elements welcome members, such as a ping pong table in the main community lounge alongside vibrant-colored private nooks





On-site amenities

- High speed Wi-Fi
- Meeting rooms
- On-site staff
- Unique common areas
- Phone booths
- Business-class printers
- Professional and social events
- Service dogs permitted
- Stocked kitchens
- Bike storage
- New parent's room
- Event space
- Showers
- Recreational games

Building specifications



Building history

Designed by HOK Architects



Security

24/7 attended lobby

24/7 CCTV monitoring



Certifications

LEED Platinum

Core and Shell certified



Building size

27 stories

354,000 RSF



Electrical capacity

352A per floor















HVAC

VAV with HHW

Set in the central, desirable SoMa district

Situated amidst the city's famous technology scene, with Microsoft's LinkedIn Tower and the headquarters of Uber, Twitter, and Salesforce nearby, 535 Mission Street is also steps from cultural destinations such as the San Francisco Museum of Modern Art, the Theater District, AT&T Park, and the Yerba Buena Center for the Arts and Gardens. The building is easily accessible from the Transbay Transit Center, Market Street, the Financial District, Union Square, and the Ferry Building. This unbeatable location is also surrounded by several art galleries, bars, restaurants, and eateries, appealing to all tastes in this bustling neighborhood.

Distance to WeWork

San Francisco International Airport	 Driving	23 min	 Train	36 min
Oakland Airport	 Driving	23 min	 Train	41 min
Transbay			 Walking	2 min
Embarcadero			 Walking	12 min
Civic Center/UN Plaza			 Train	10 min
19th Street / Oakland			 Train	16 min
Macarthur			 Train	19 min
Balboa Park			 Train	27 min
Coliseum			 Train	31 min
Bay Fair			 Train	33 min



17th Floor

14,216 RSF






3

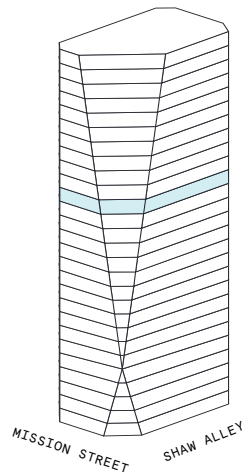
MEETING ROOM(S)

1

SHARED WORKSPACE(S)

LEGEND

-  MEETING ROOM
-  SHARED WORKSPACE
-  DEDICATED SPACE



Suite 1720

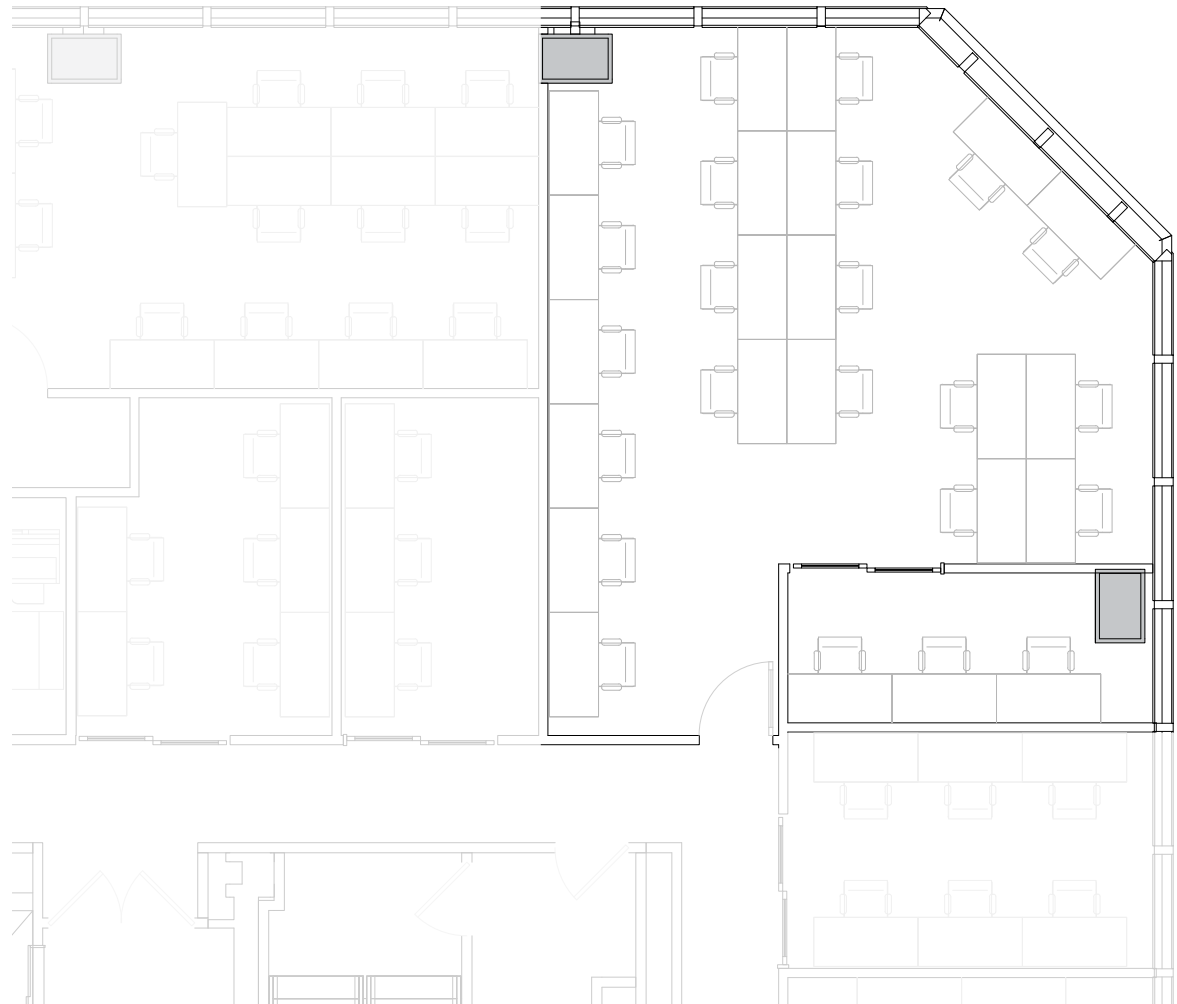
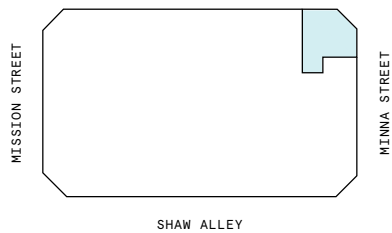
17th Floor

1

PRIVATE OFFICE(S)

1,221 RSF

RENTABLE AREA



18th Floor

13,851 RSF



4

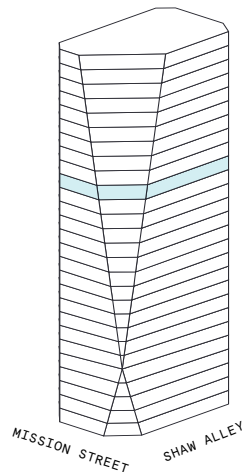
MEETING ROOM(S)

1

SHARED WORKSPACE(S)

LEGEND

- MEETING ROOM
- SHARED WORKSPACE
- DEDICATED SPACE



Suite 1821

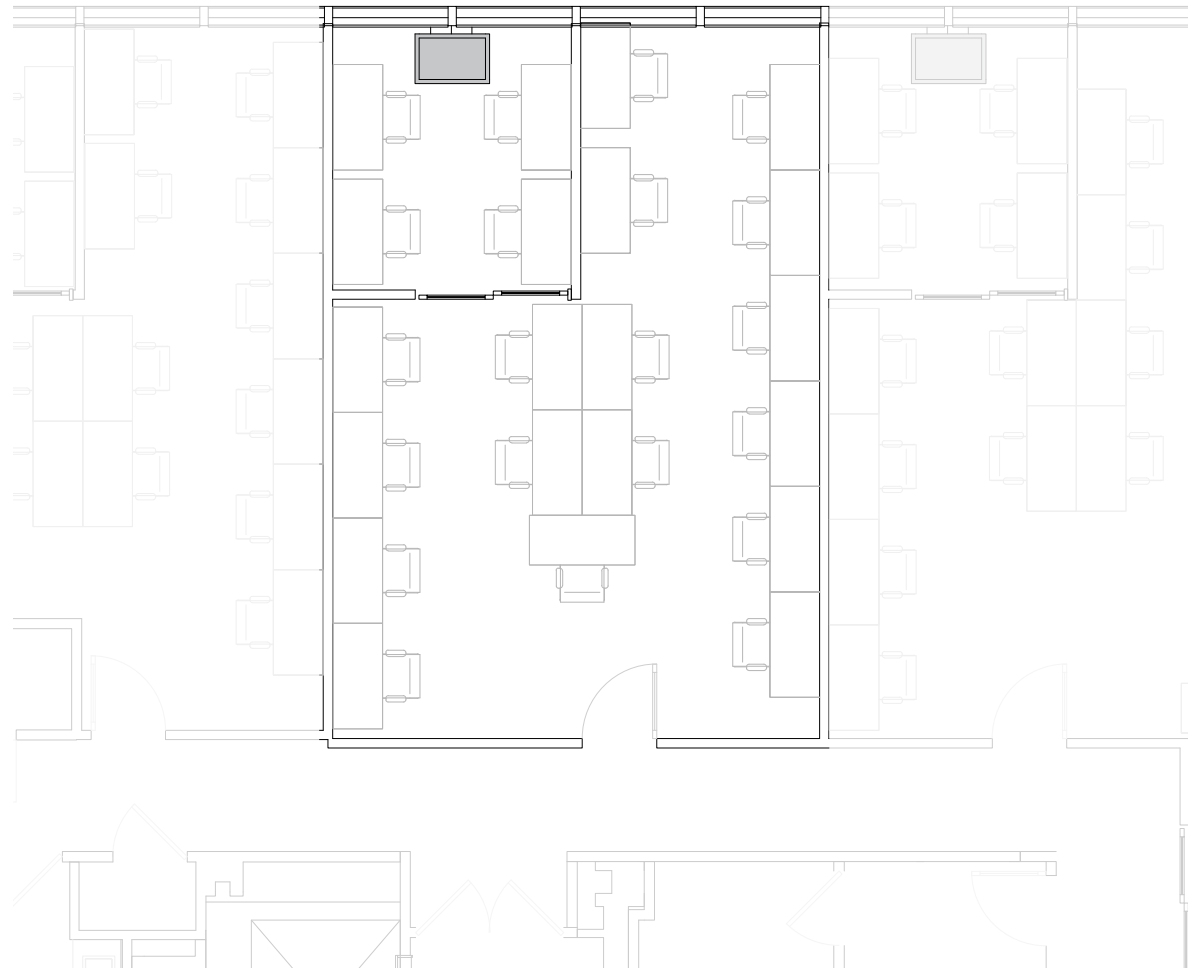
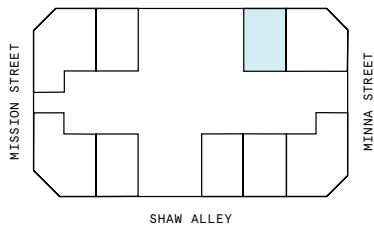
18th Floor

1

PRIVATE OFFICE(S)

907 RSF

RENTABLE AREA



Suite 1822

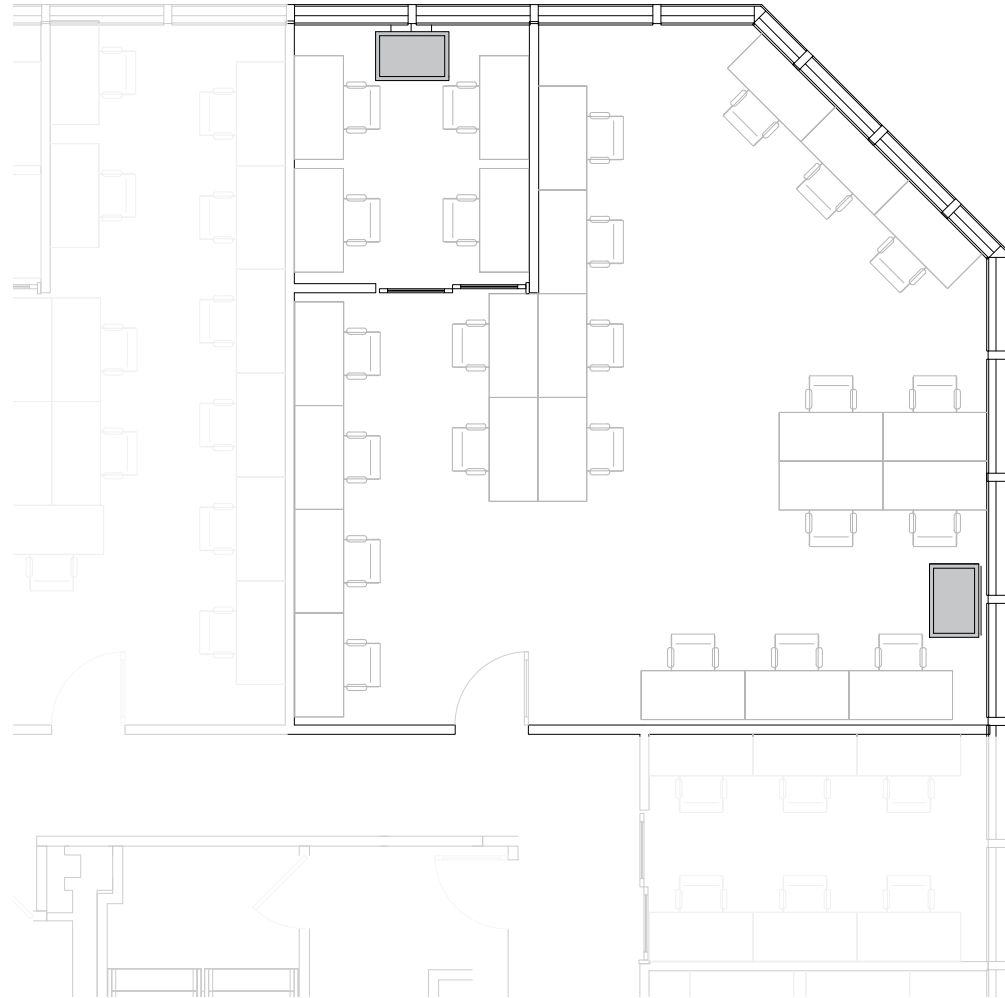
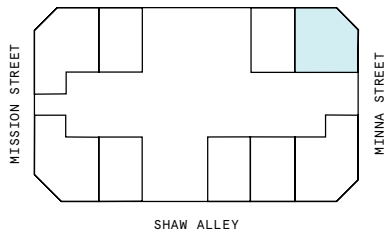
18th Floor

1

PRIVATE OFFICE(S)

1,310 RSF

RENTABLE AREA



Suite 1825

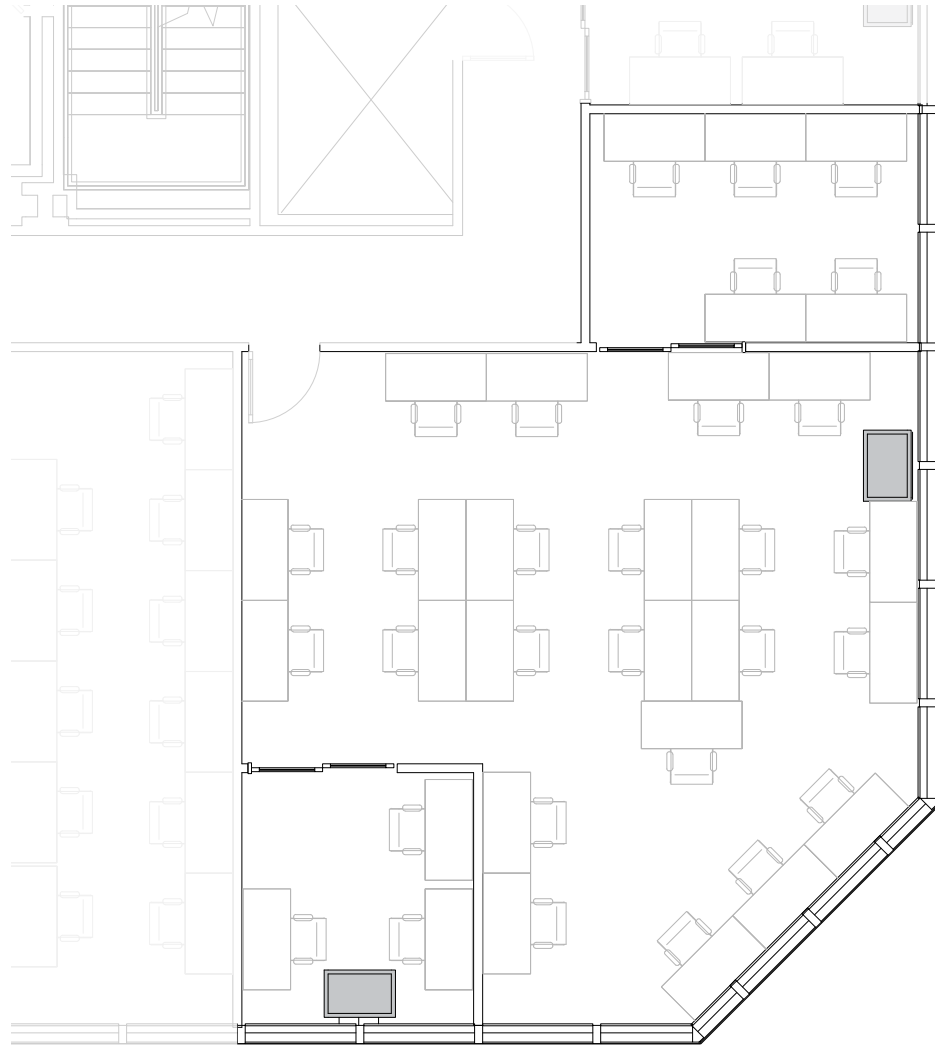
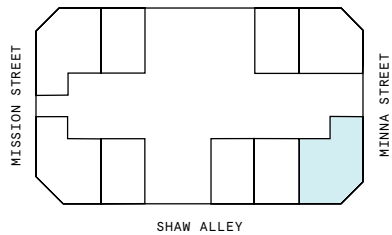
18th Floor

2

PRIVATE OFFICE(S)

1,296 RSF

RENTABLE AREA



Suite 1826

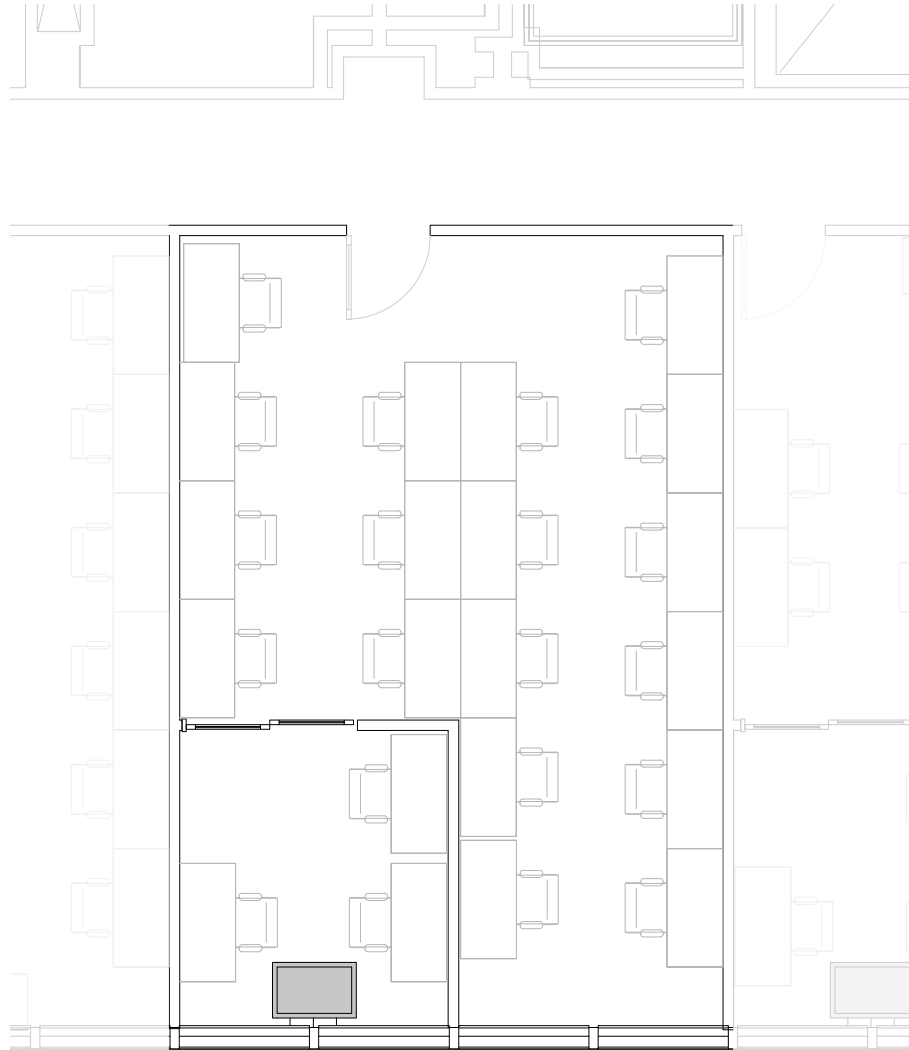
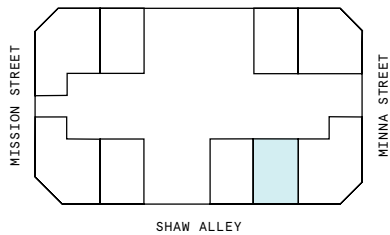
18th Floor

1

PRIVATE OFFICE(S)

886 RSF

RENTABLE AREA



Suite 1827

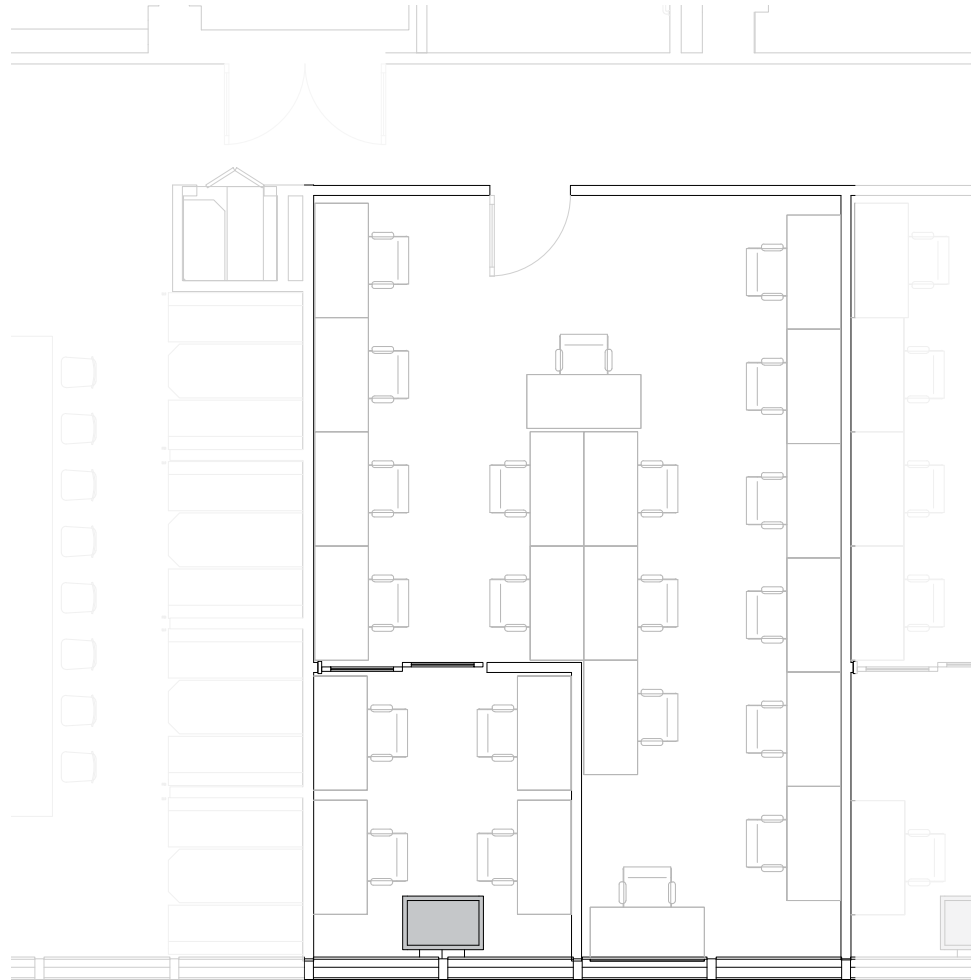
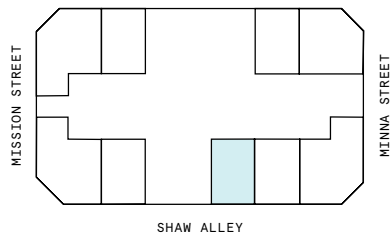
18th Floor

1

PRIVATE OFFICE(S)

895 RSF

RENTABLE AREA



Suite 1829

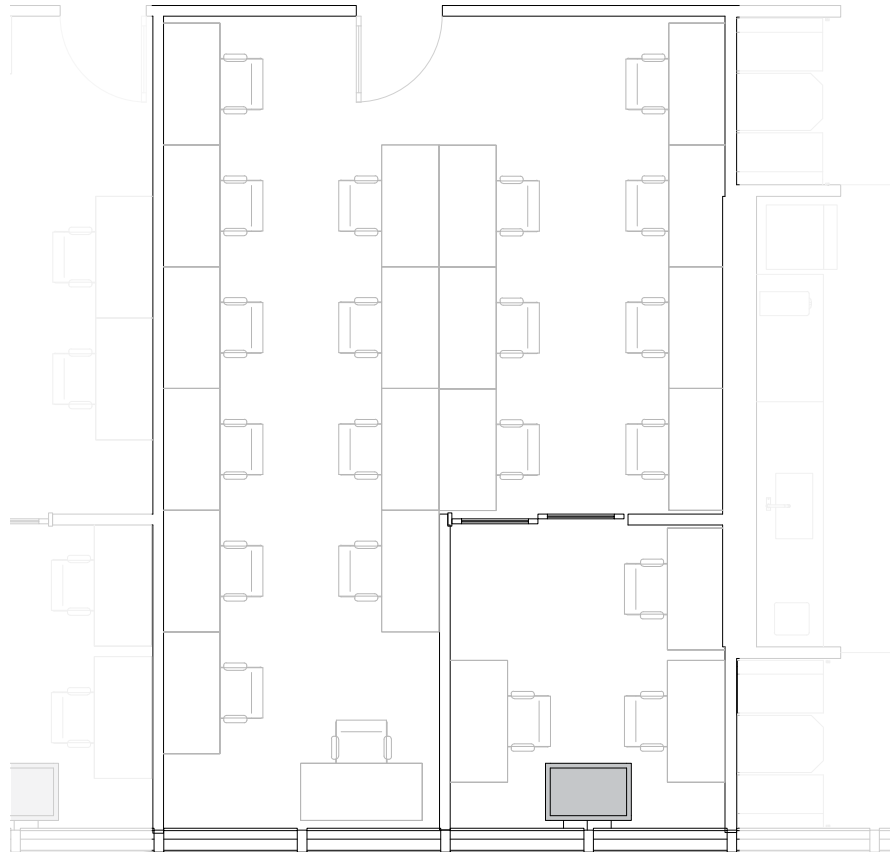
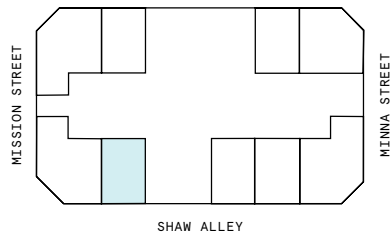
18th Floor

1

PRIVATE OFFICE(S)

894 RSF

RENTABLE AREA



Suite 1830

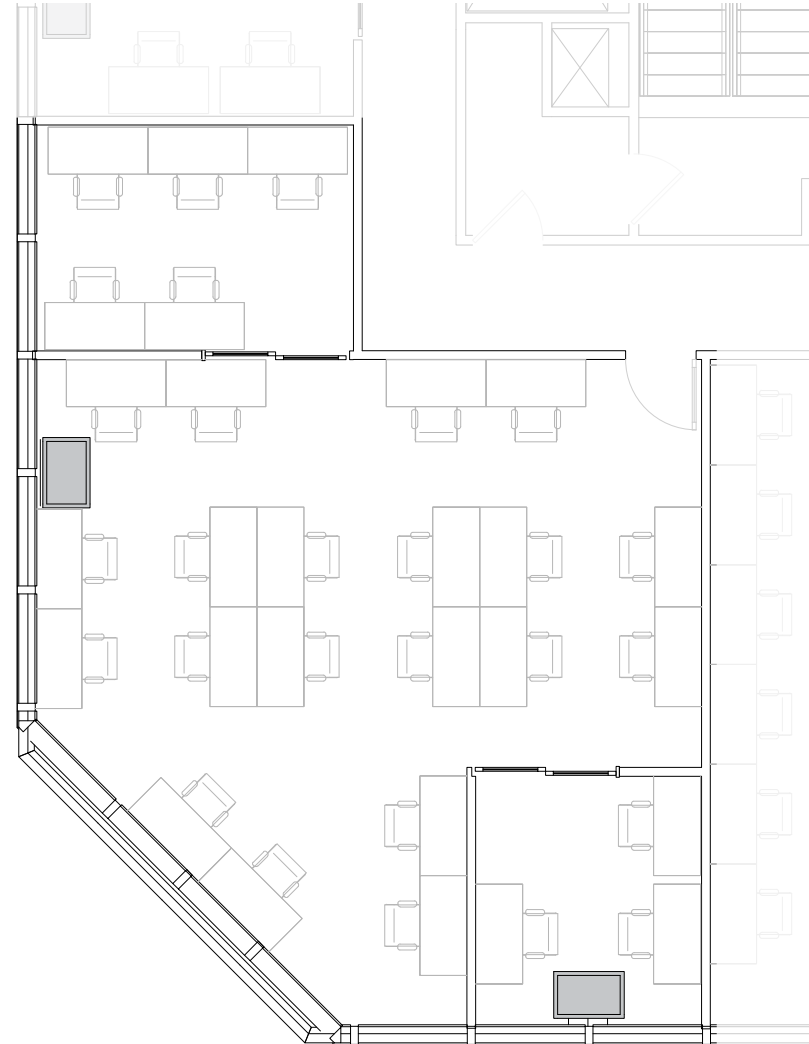
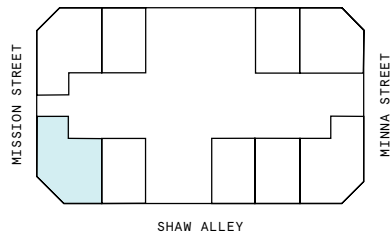
18th Floor

2

PRIVATE OFFICE(S)

1,212 RSF

RENTABLE AREA



Suite 1833

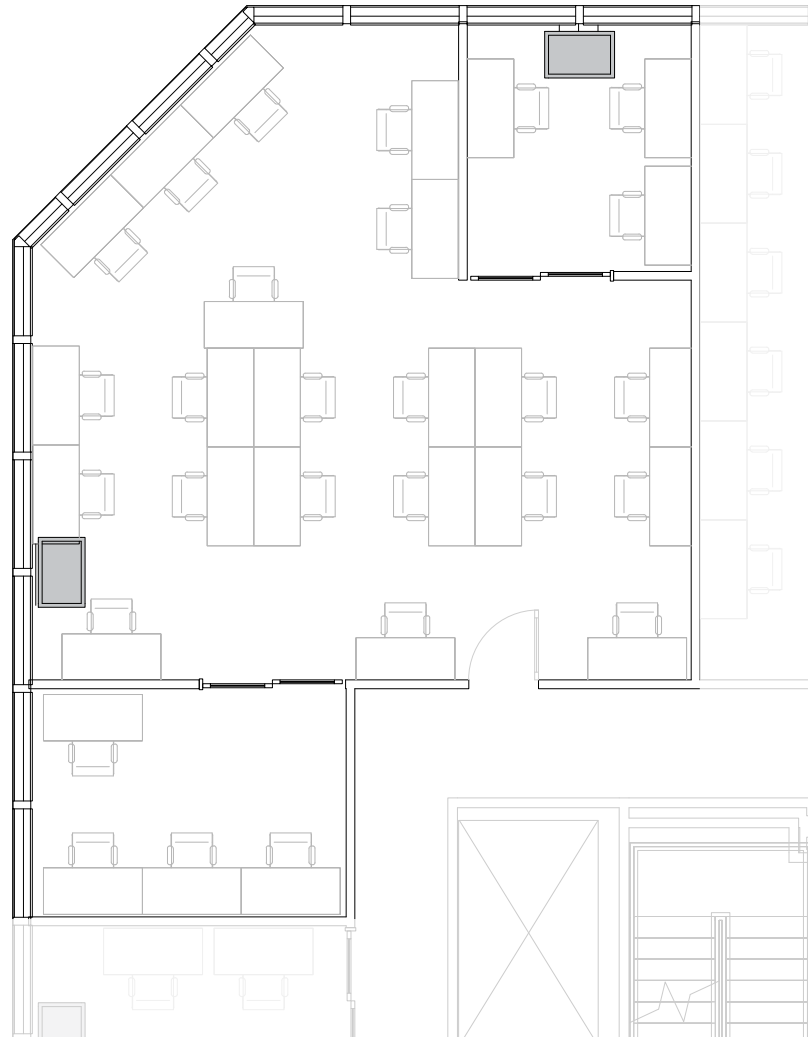
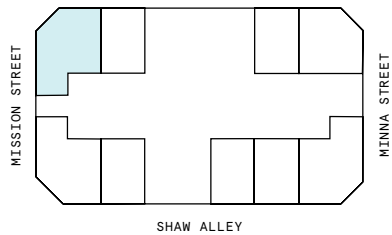
18th Floor

2

PRIVATE OFFICE(S)

1,279 RSF

RENTABLE AREA



Suite 1834

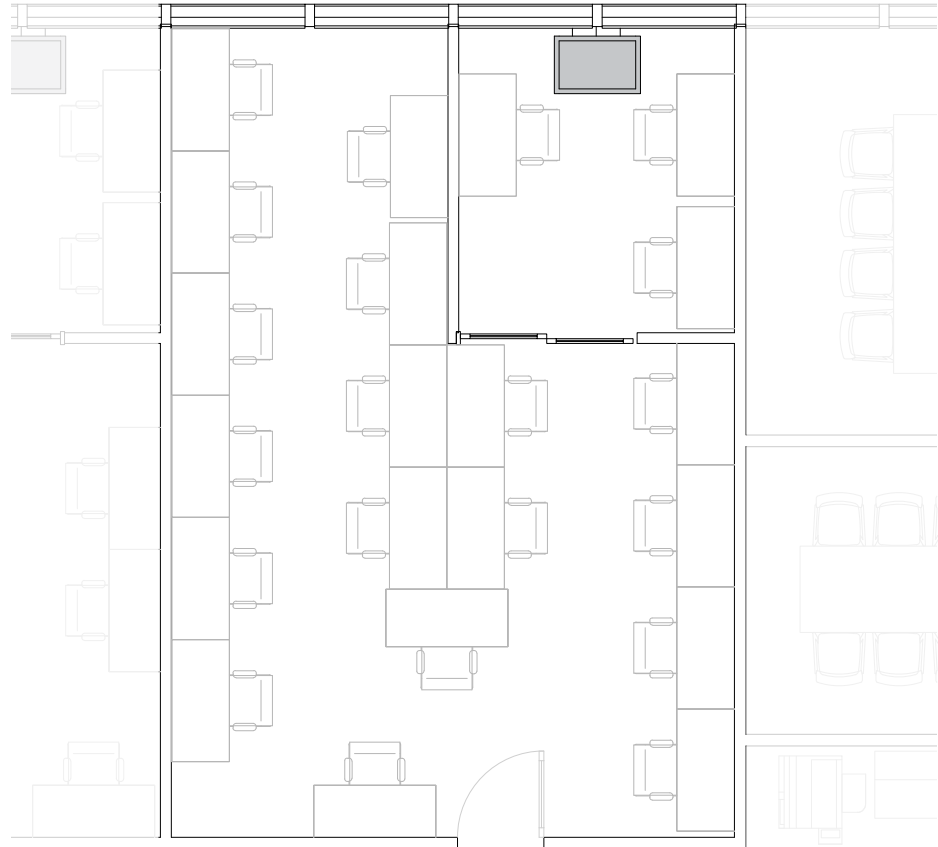
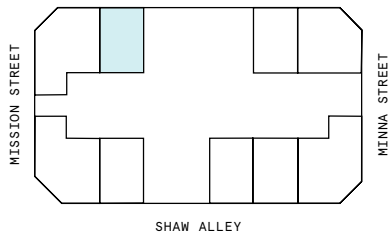
18th Floor

1

PRIVATE OFFICE(S)

887 RSF

RENTABLE AREA



19th Floor

13,710 RSF






4

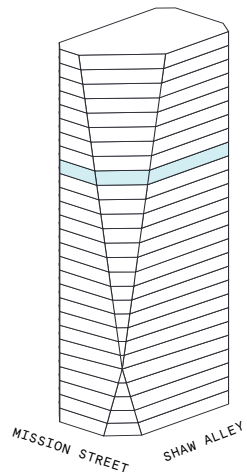
MEETING ROOM(S)

1

SHARED WORKSPACE(S)

LEGEND

-  MEETING ROOM
-  SHARED WORKSPACE
-  DEDICATED SPACE



Suite 1921

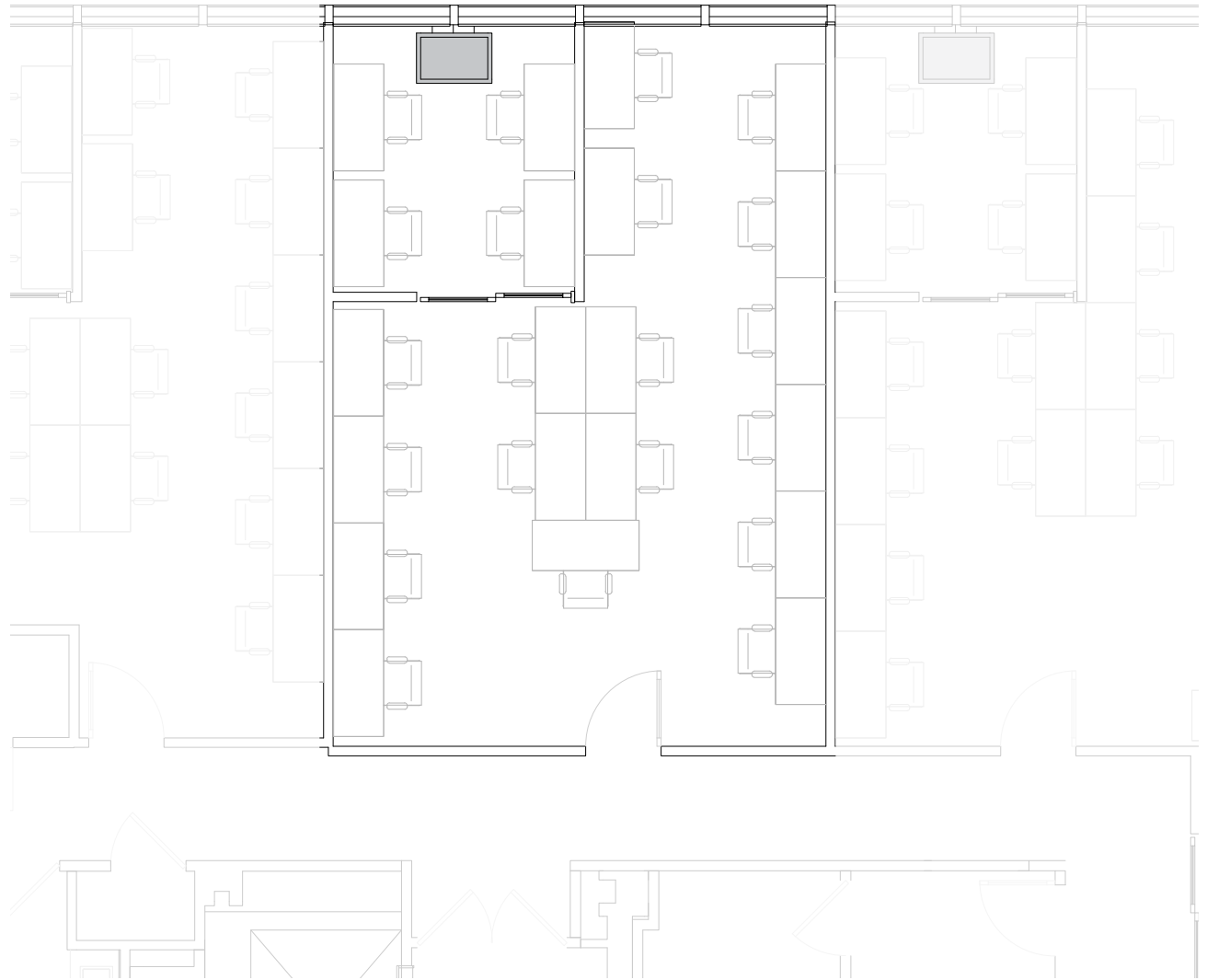
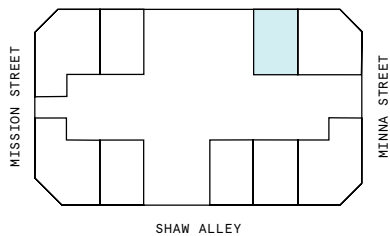
19th Floor

1

PRIVATE OFFICE(S)

899 RSF

RENTABLE AREA



Suite 1922

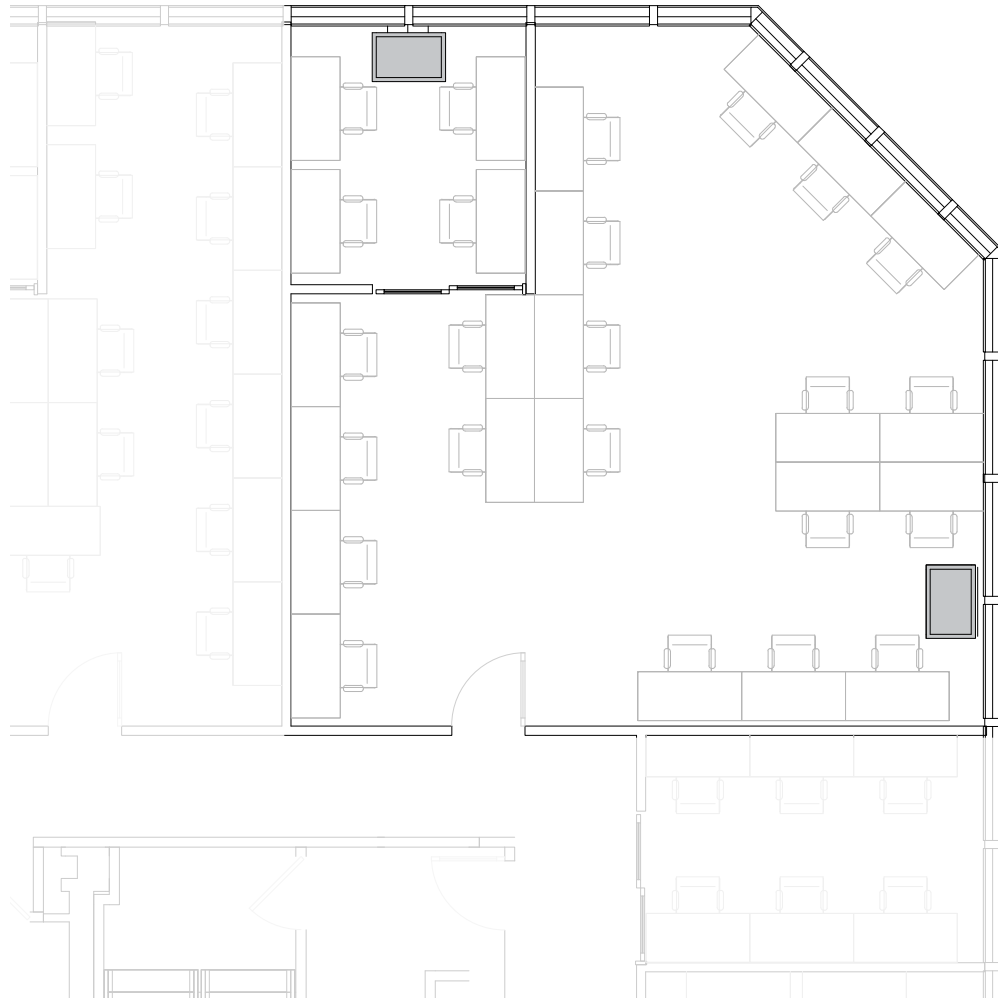
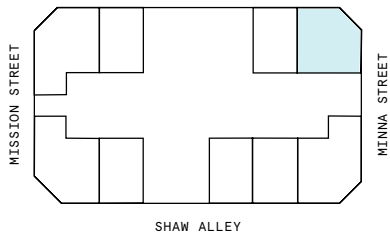
19th Floor

1

PRIVATE OFFICE(S)

1,248 RSF

RENTABLE AREA



Suite 1925

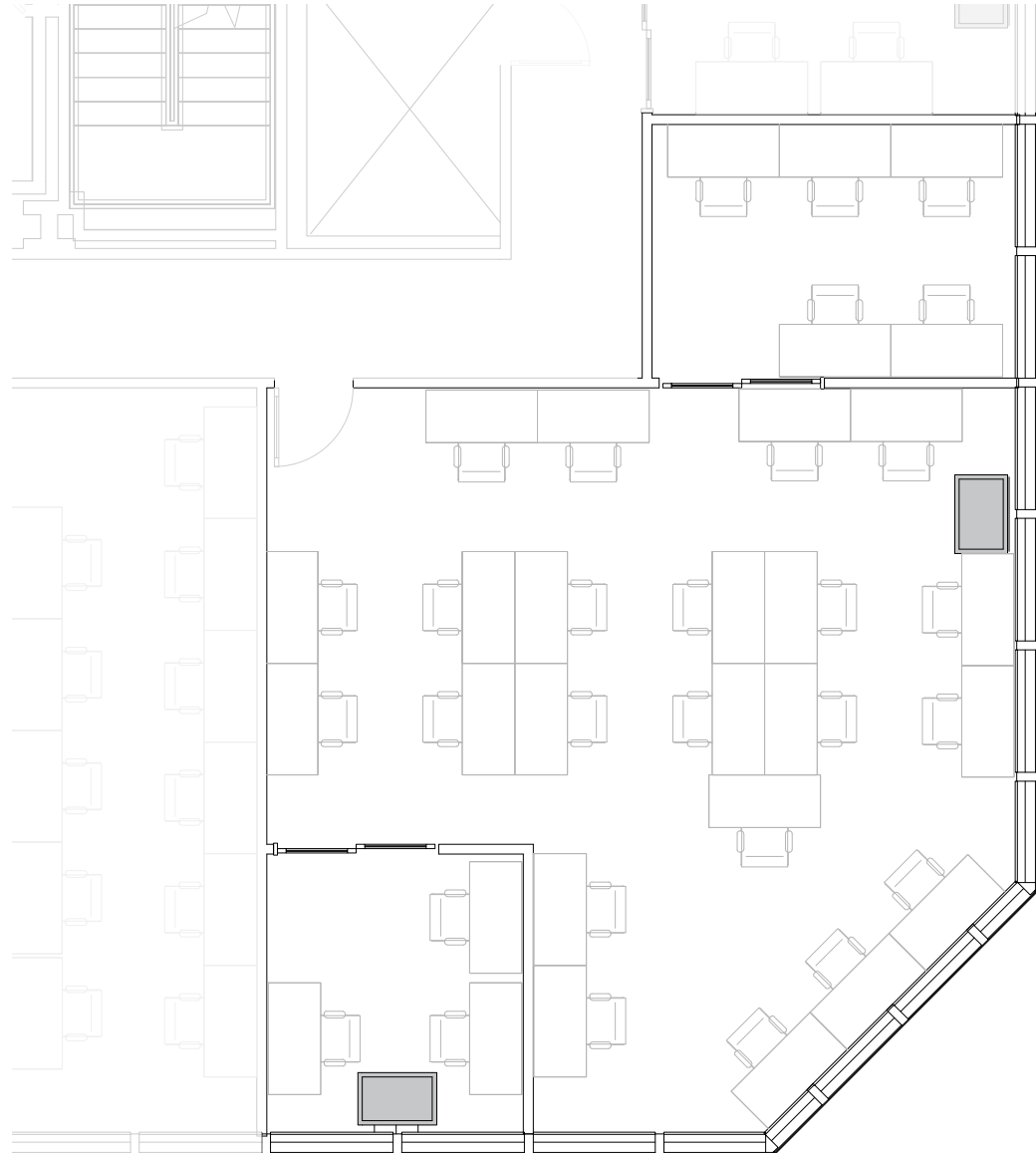
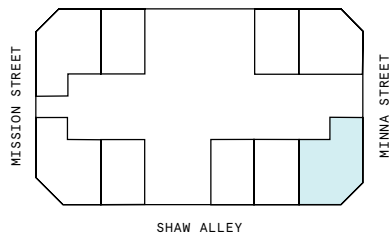
19th Floor

2

PRIVATE OFFICE(S)

1,246 RSF

RENTABLE AREA



Suite 1926

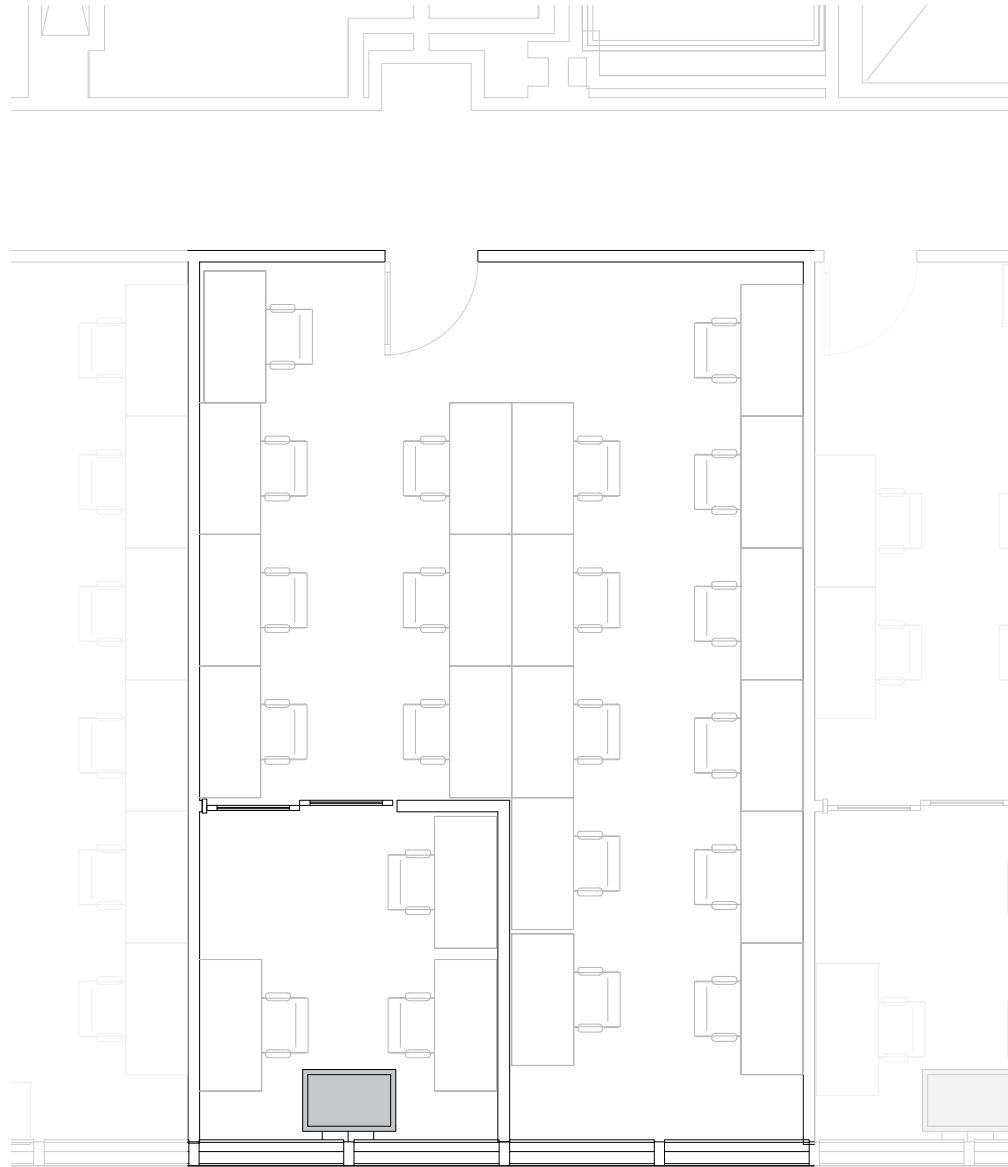
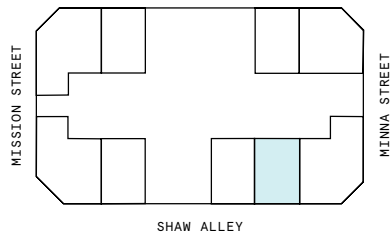
19th Floor

2

PRIVATE OFFICE(S)

899 RSF

RENTABLE AREA



Suite 1927

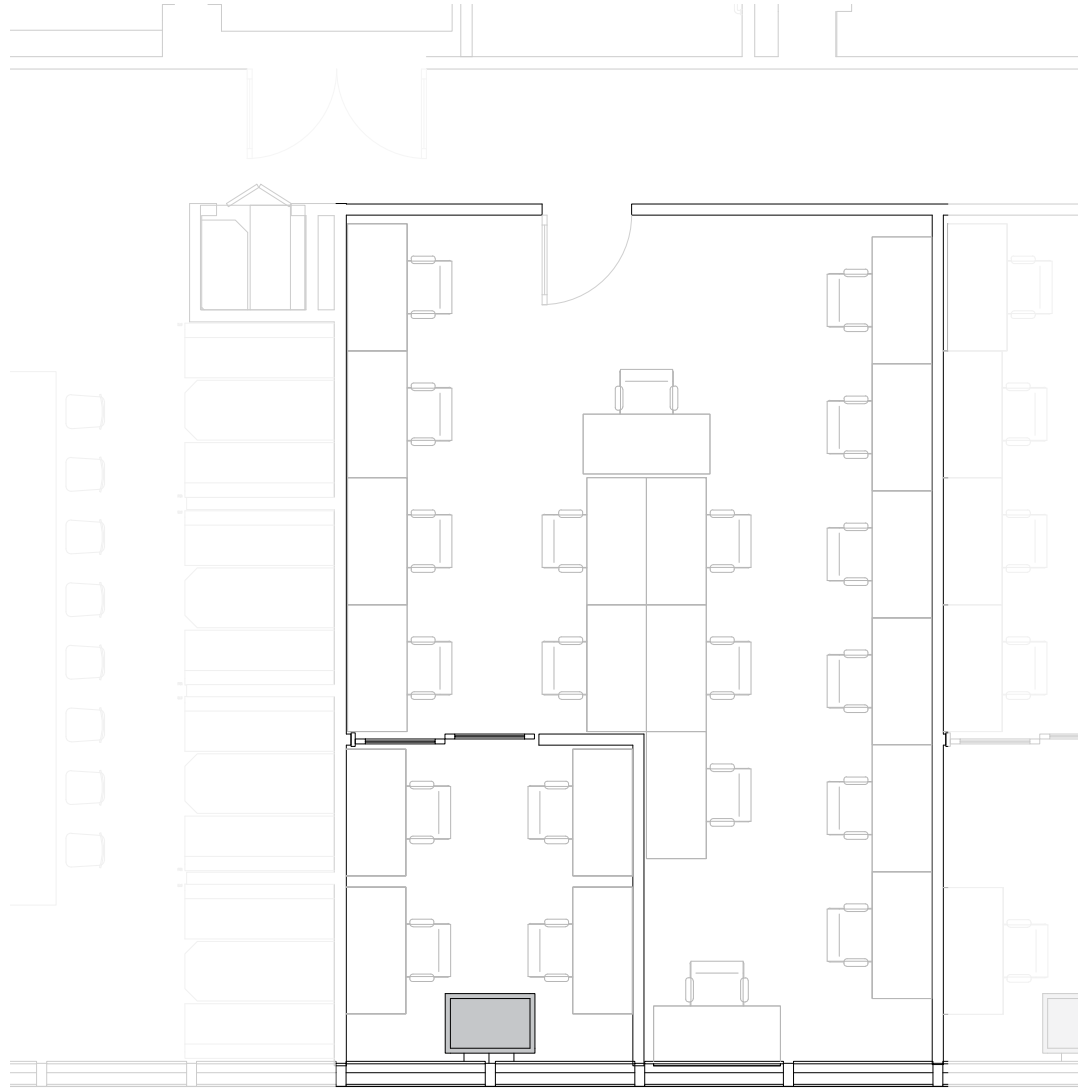
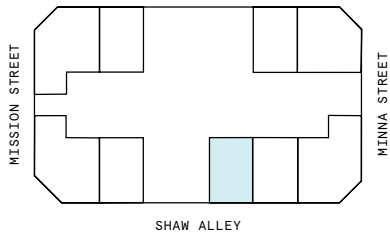
19th Floor

1

PRIVATE OFFICE(S)

899 RSF

RENTABLE AREA



Suite 1929

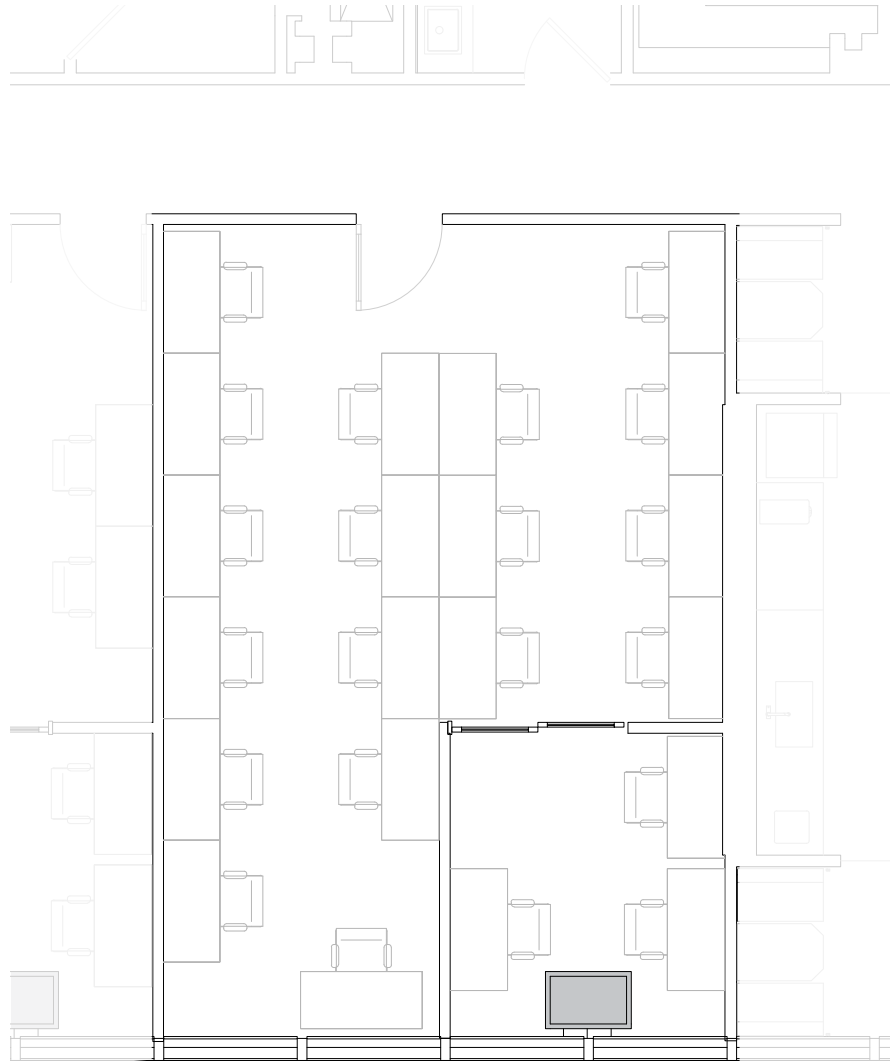
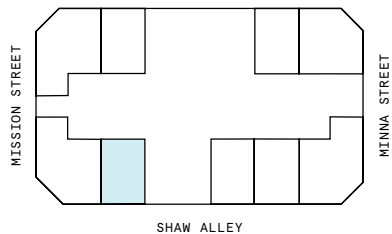
19th Floor

1

PRIVATE OFFICE(S)

899 RSF

RENTABLE AREA



Suite 1930

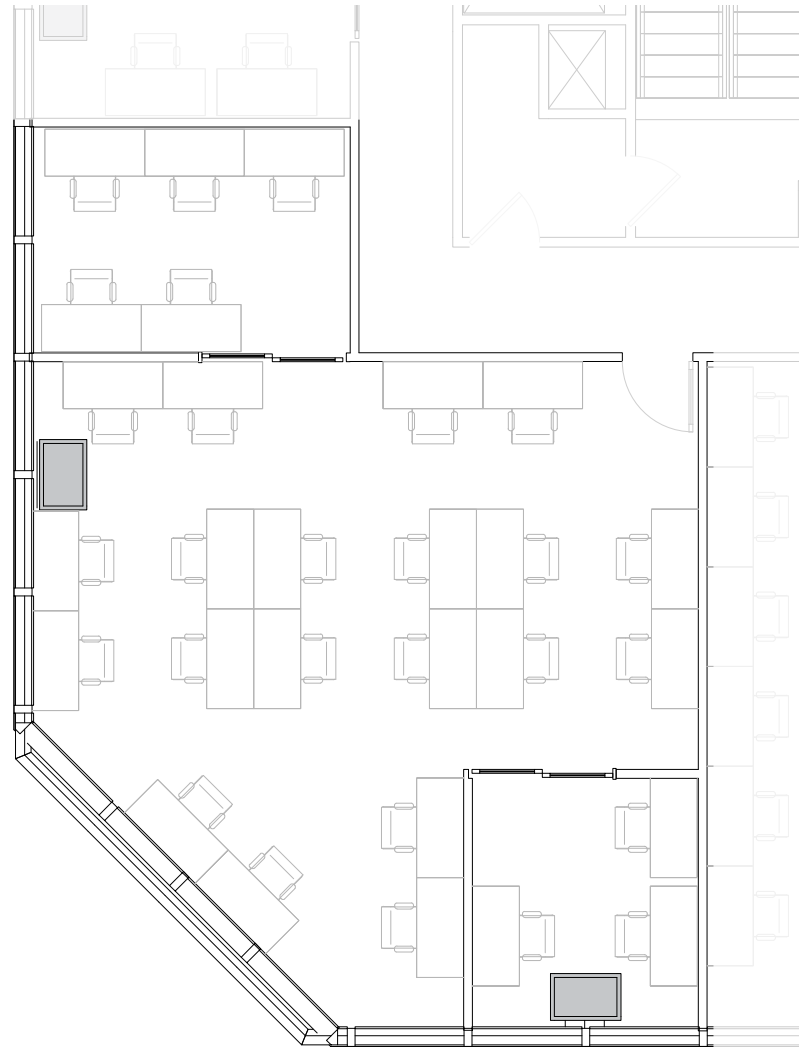
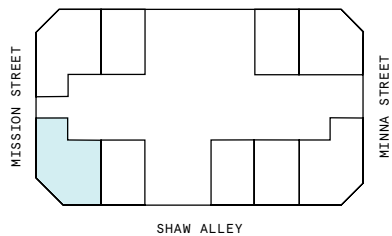
19th Floor

1

PRIVATE OFFICE(S)

1,190 RSF

RENTABLE AREA



Suite 1933

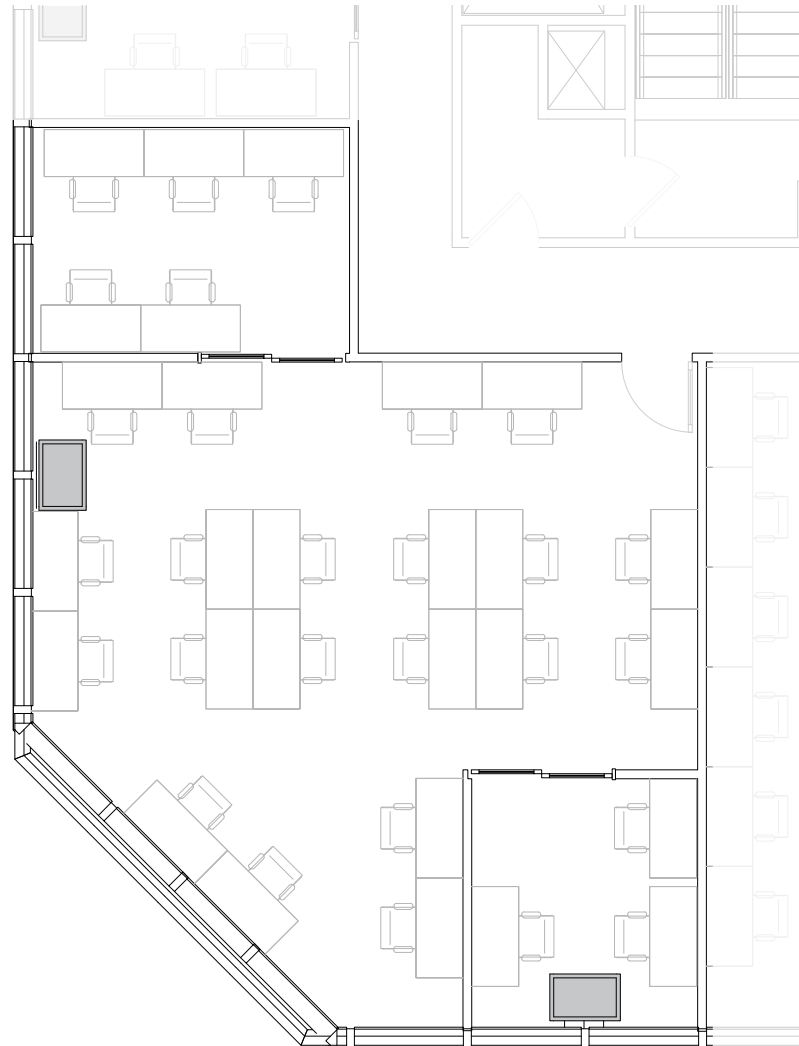
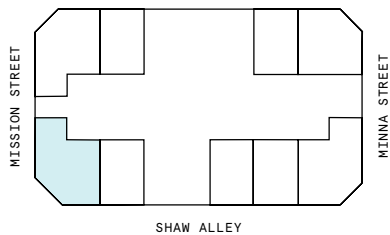
19th Floor

1

PRIVATE OFFICE(S)

1,234 RSF

RENTABLE AREA



Suite 1934

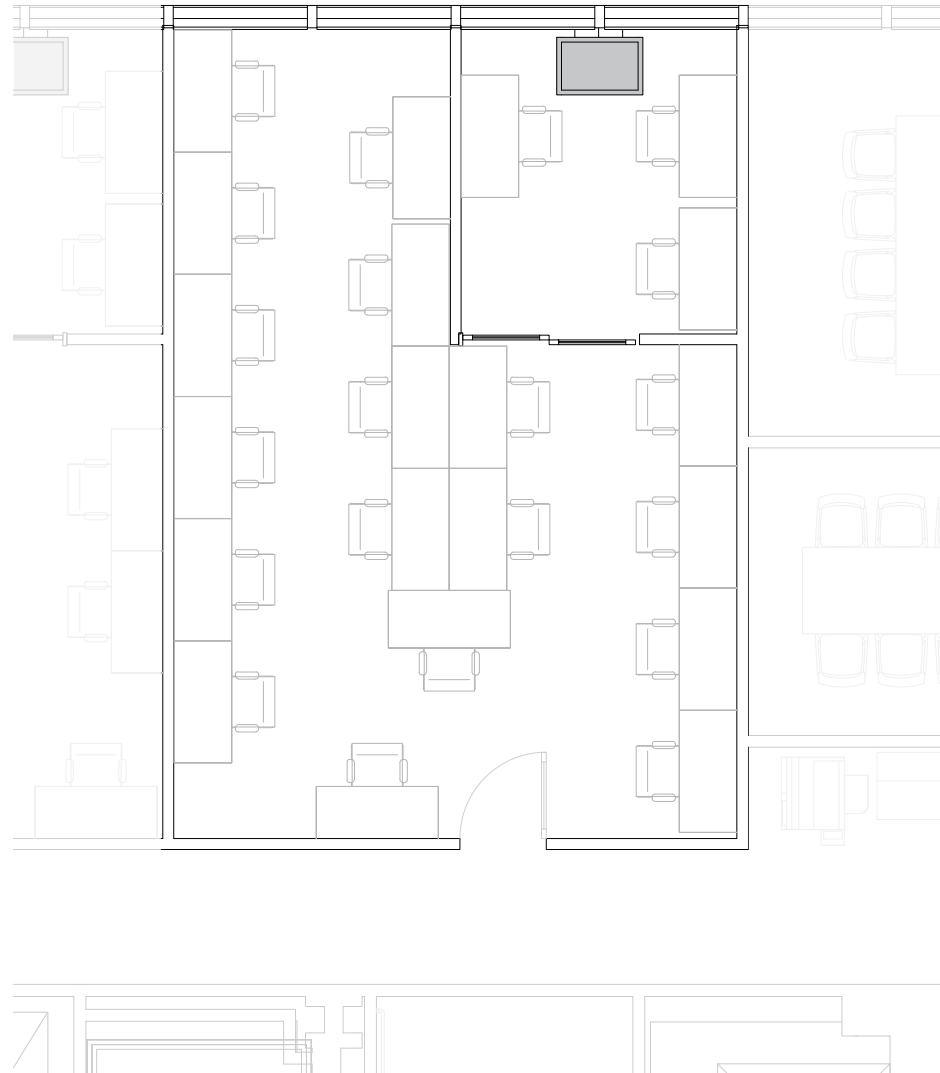
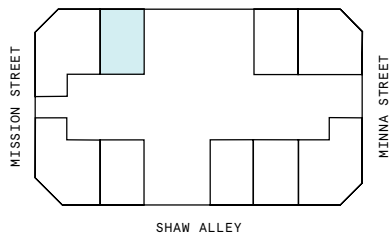
19th Floor

1

PRIVATE OFFICE(S)

888 RSF

RENTABLE AREA



Contact

For leasing inquiries please reach out to our team.



Ashkon Aliyar

SENIOR LEASING MANAGER
ASHKON.ALIYAR@WEWORK.COM
925.260.9864