



# Bridgeview Bank

4753 North Broadway



## Space availability summary

WeWork @ 4753 North Broadway  
Chicago, IL

**wework**

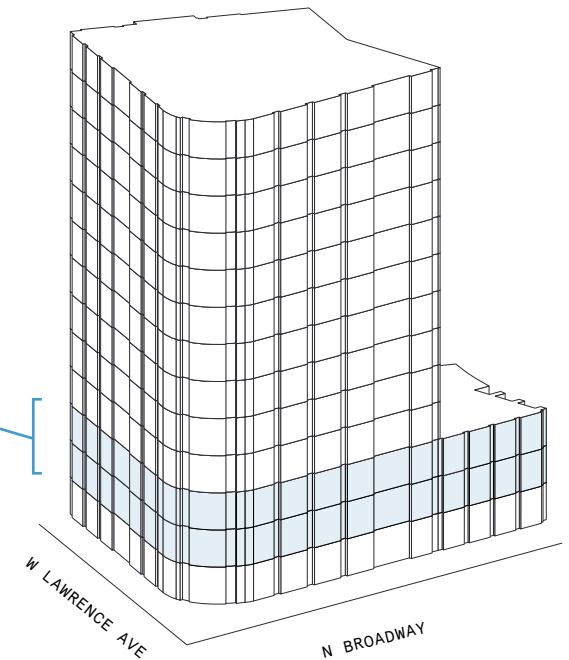
[VIEW VIRTUAL TOUR](#)

[VIEW PROPERTY VIDEO](#)

3rd Floor 5,277 RSF  
2nd Floor 16,060 RSF

**21,337 RSF**

TOTAL WEWORK RSF



# Bridgeview Bank

At a glance

Workspaces designed for productivity and creativity with flexible size & term

Dedicated, private offices available from 114 - 696 RSF

Move-in ready offices furnished & wired

**13**

TOTAL BUILDING FLOORS

**133,555**

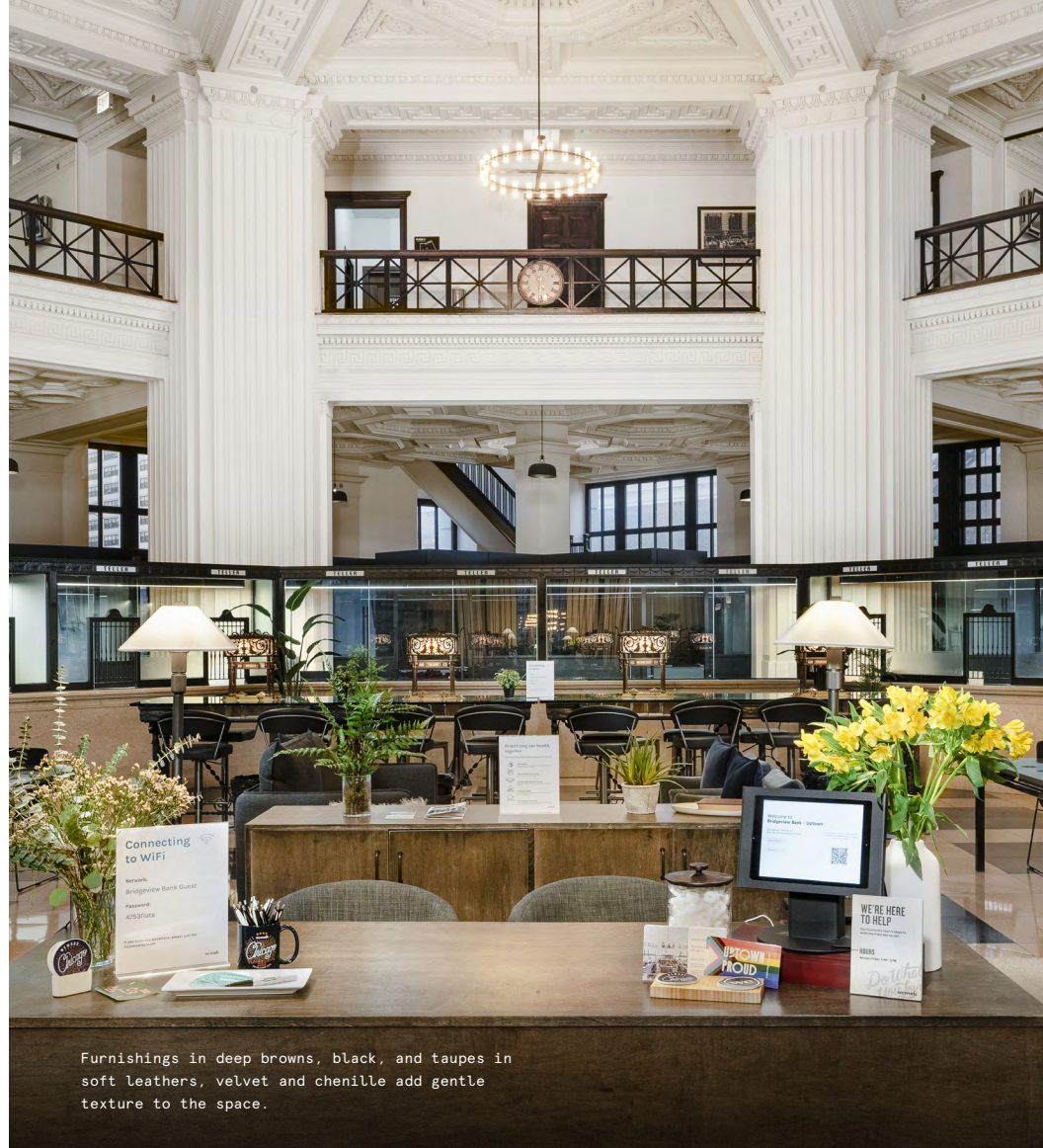
TOTAL BUILDING SQ FT

All dimensions are approximate and subject to variances. It is your obligation to independently verify the particulars of the property. WeWork reserves the right to make changes.





Built in the 1920s, the Bridgeview Bank building at 4753 North Broadway is the jewel of Chicago's Uptown neighborhood.



Furnishings in deep browns, black, and taupes in soft leathers, velvet and chenille add gentle texture to the space.

## A contemporary classic

Located at 4753 North Broadway, Bridgeview Bank is one of the most prominent and historic buildings in Uptown Chicago. Built in 1925, during the golden age of bank architecture, Bridgeview Bank is where modern functionality and grand, classical design meet. This one-of-a-kind location includes all the amenities today's workers enjoy while preserving its memorable flourishes, including recommissioned bank teller spaces and strikingly ornate windows.

WeWork occupies the iconic grand hall and mezzanine level which feature open floor shared workspaces, private offices, and generous meeting rooms, which integrate into and complement the building's original design.





The refined design of the Restoration Hardware chandeliers in the great central space add contrast to the baroque plaster ceiling.



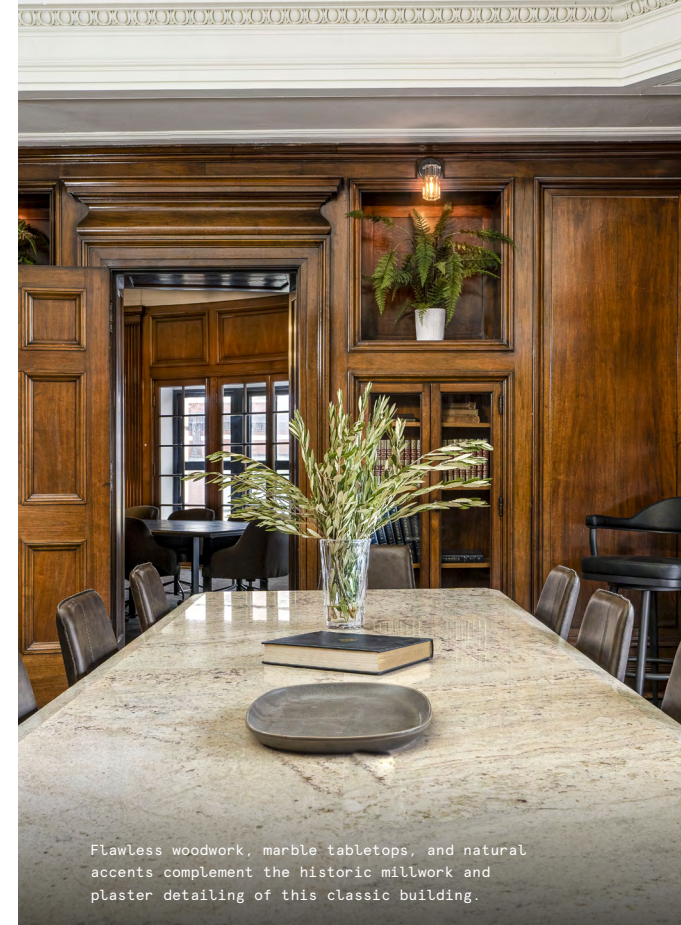
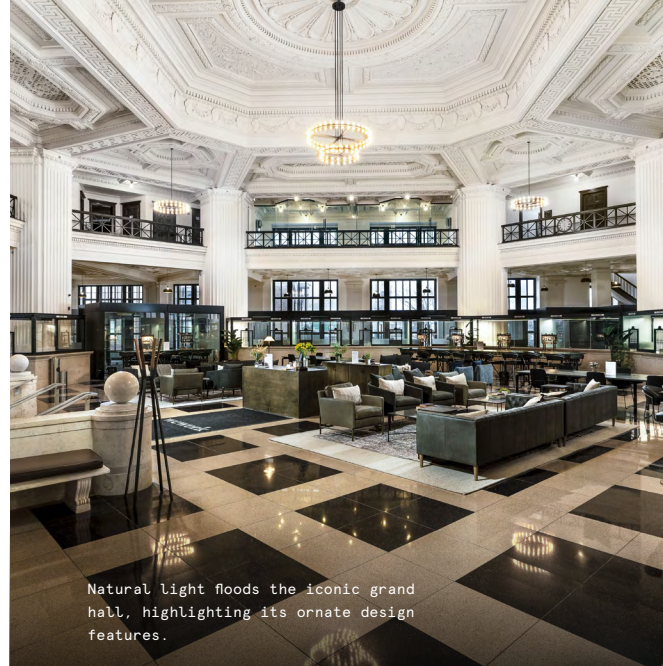
Glass partitions create transparency, allowing the architectural details and design flourishes of the original building to come through.



# A true show stopper

Natural light floods the grand hall, while the intentionally subdued palette allows the details of the original architecture to shine. Clean-lined iron was used as the primary metal carried throughout, and furnishings in soft leathers, velvet, and chenille add a gentleness that makes each aspect of the common areas warm, inviting, and comfortable.

- Vintage artwork, including original photographs of the interior and façade details of the building, are found throughout the space
- The chandeliers in the grand hall play off of the geometric metal railing, and the light that glows from the crystal glass shades highlights the ornamental plaster ceiling
- Custom wood and stone tables in book-matched patterns were designed to accentuate the boardrooms' historic millwork and plaster detailing







## On-site amenities

---

- Electronic keycard access
- Web-based visitor access
- Business-class printers
- Professional events and programming

- Stocked pantry
- US mail drop
- On-site staff
- Meeting rooms
- New parent's room

- Phone booths
- Event space
- Dog-friendly spaces

# Building specifications

---



## Hours of operation

---

Monday – Friday: 8am–5pm



## Security

---

Security guard daily: 8am–5pm



## HVAC

---

Monday – Friday: 24/7



## Building history

---

Built in 1924  
Developed by CEDARst Companies  
Designed by Marshall and Fox  
Renovated in 2022



## Elevators

---

3 elevators



## Fire strategy

---

Fully-sprinklered floors



## Building size

---

13 stories  
133,555 SF






# The pride of Uptown

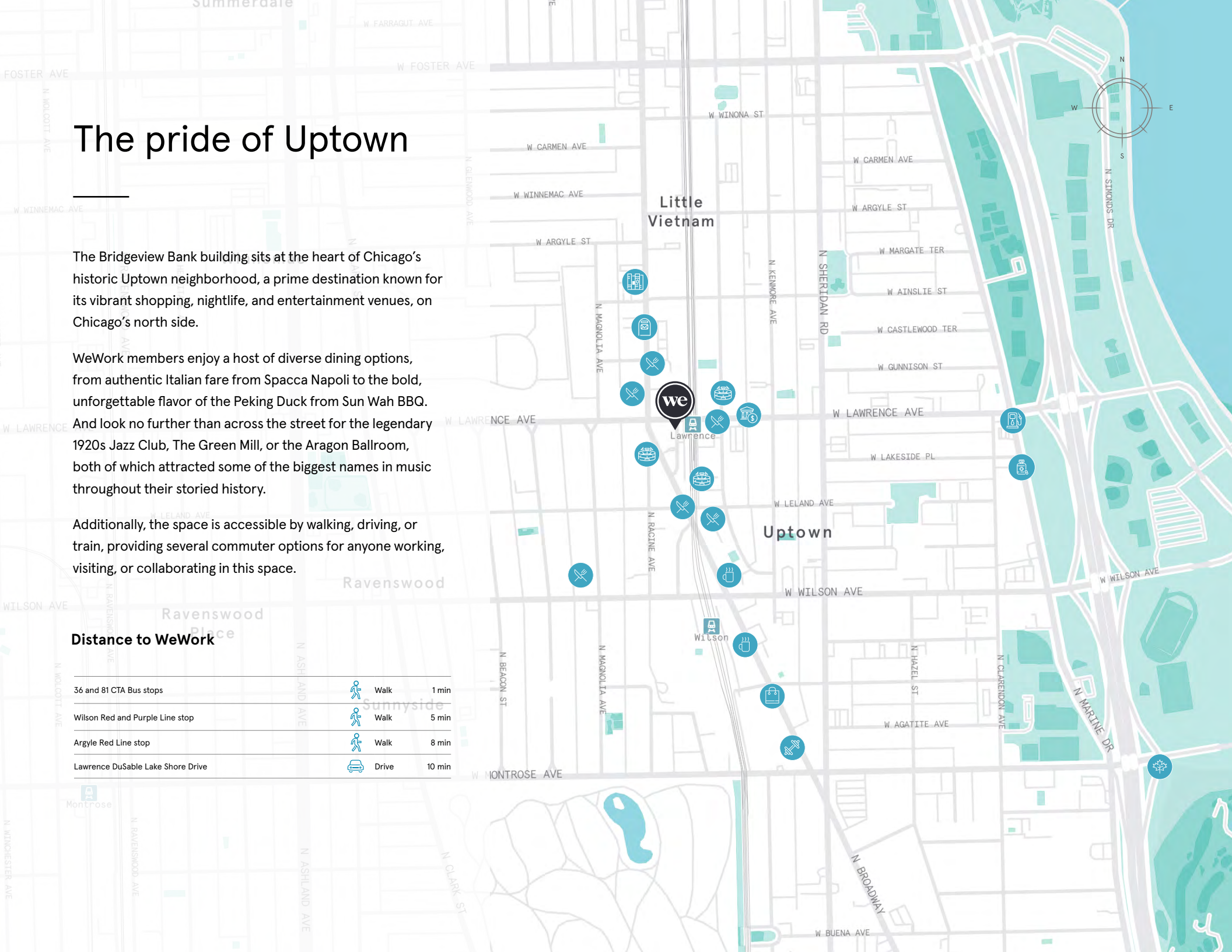
The Bridgeview Bank building sits at the heart of Chicago's historic Uptown neighborhood, a prime destination known for its vibrant shopping, nightlife, and entertainment venues, on Chicago's north side.

WeWork members enjoy a host of diverse dining options, from authentic Italian fare from Spacca Napoli to the bold, unforgettable flavor of the Peking Duck from Sun Wah BBQ. And look no further than across the street for the legendary 1920s Jazz Club, The Green Mill, or the Aragon Ballroom, both of which attracted some of the biggest names in music throughout their storied history.

Additionally, the space is accessible by walking, driving, or train, providing several commuter options for anyone working, visiting, or collaborating in this space.

## Distance to WeWork

36 and 81 CTA Bus stops	 Walk	1 min
Wilson Red and Purple Line stop	 Walk	5 min
Argyle Red Line stop	 Walk	8 min
Lawrence DuSable Lake Shore Drive	 Drive	10 min





# 2nd Floor

16,060 RSF

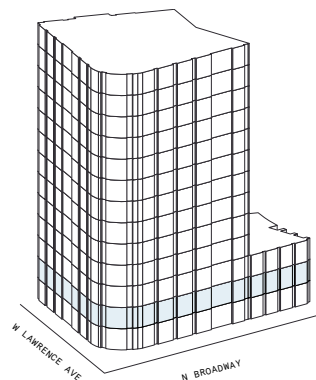
4  
MEETING ROOM(S)

6  
SHARED WORKSPACE(S)

43  
PRIVATE OFFICE(S)

## LEGEND

- MEETING ROOM
- SHARED WORKSPACE
- DEDICATED SPACE



WEST LAWRENCE AVE

NORTH CLIFTON AVE



NORTH BROADWAY

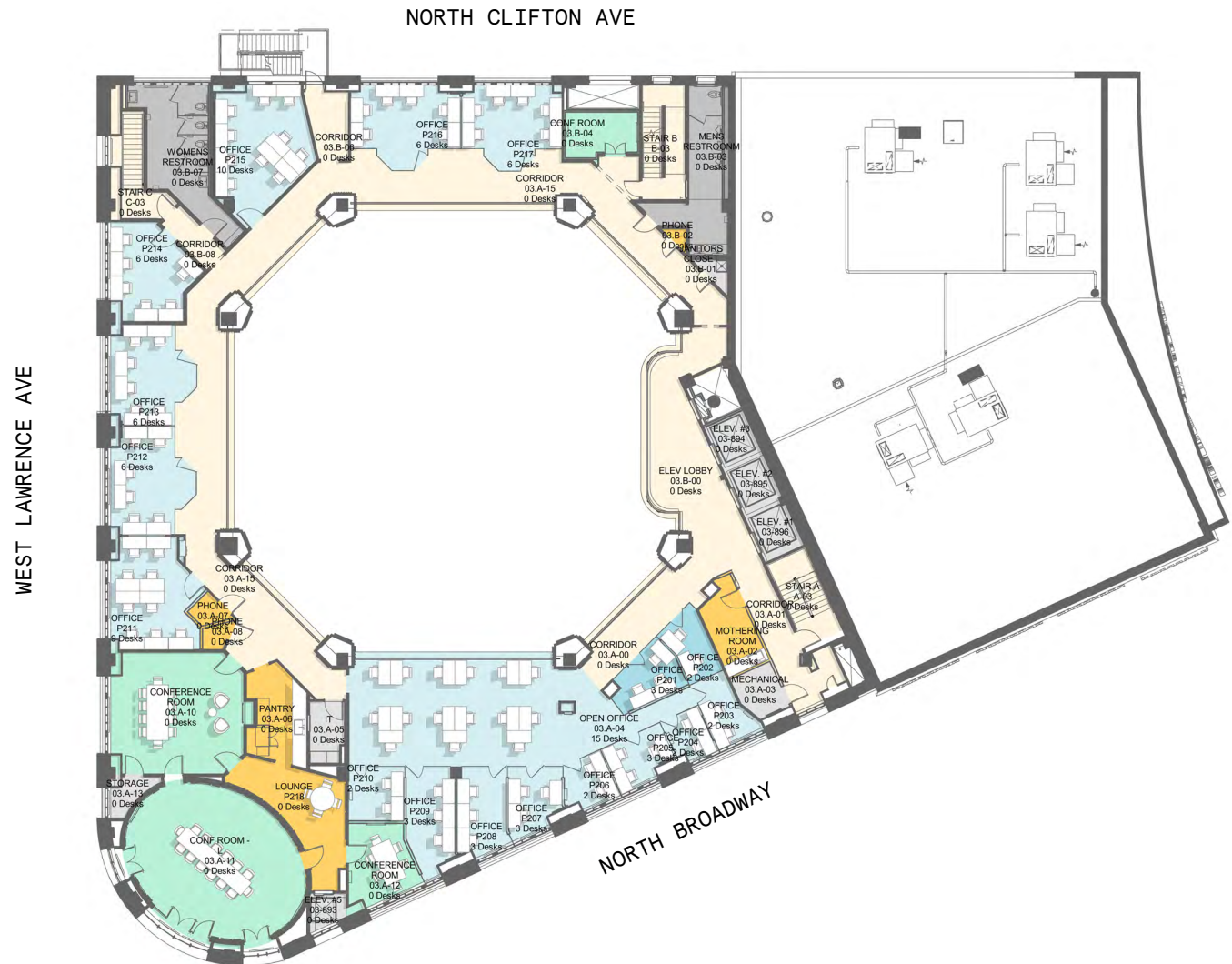
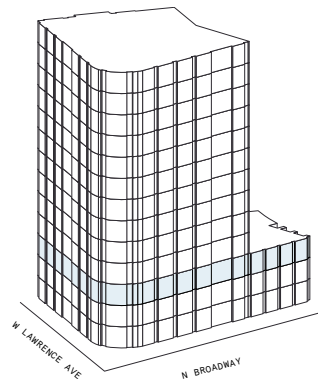


5,277 RSF

#### 4 SHARED WORKSPACE(S)

17  
PRIVATE OFFICE(S)

- MEETING ROOM
- SHARED WORKSPACE
- DEDICATED SPACE



All dimensions are approximate and subject to variances. It is your obligation to independently verify the particulars of the property. WeWork reserves the right to make changes.



# Contact

---

Complete the form [linked here](#) to book a tour or connect with one of our team members.

