

the
Neighborhood
DesignCenter

Community Design Works

The Neighborhood Design Center's Community Design Works program provides conceptual design assistance for community-initiated projects in low- to moderate-income communities in Baltimore City and Prince George's County, Maryland.

The CDW Program works on **architectural, landscape, and planning initiatives** using volunteers from the professional design community.

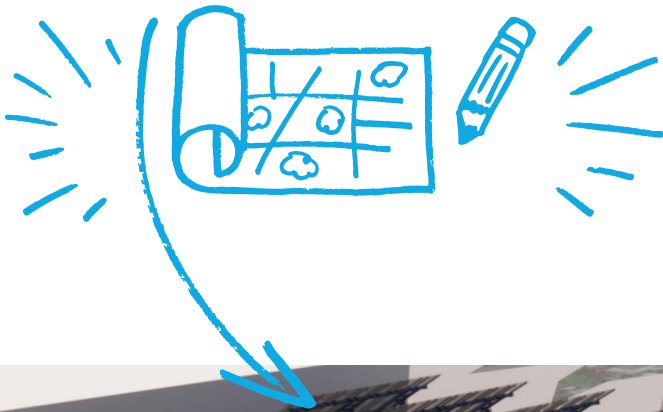
We believe that partnerships between communities and professionals provide mutual benefit, offering invaluable on-the-job training and exposure to members of the design community and **positioning historically disinvested neighborhoods to attract future investment.**

NDC adds value to a project early in the project development process through feasible and sustainable conceptual designs so you can better communicate your vision with potential funders and implementation partners.



Projects we work on

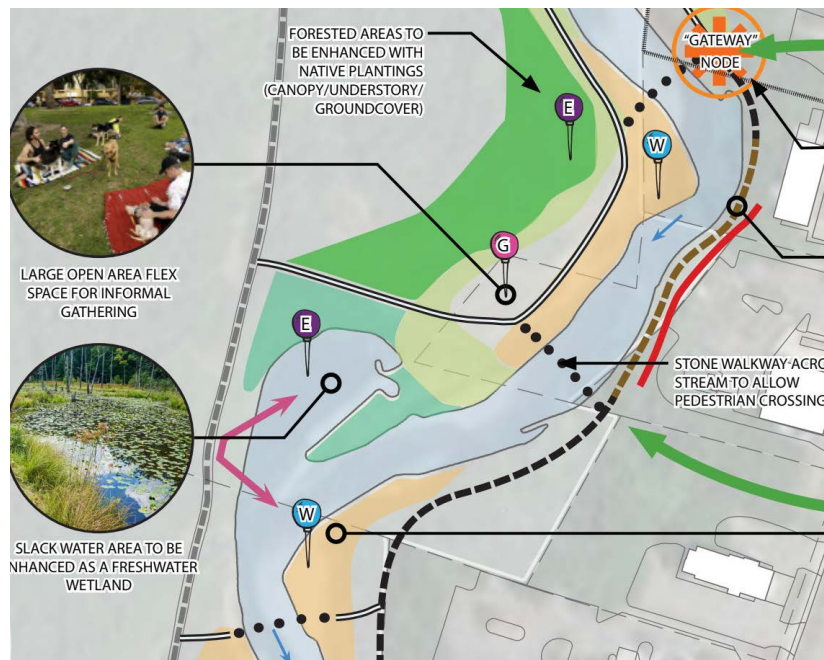
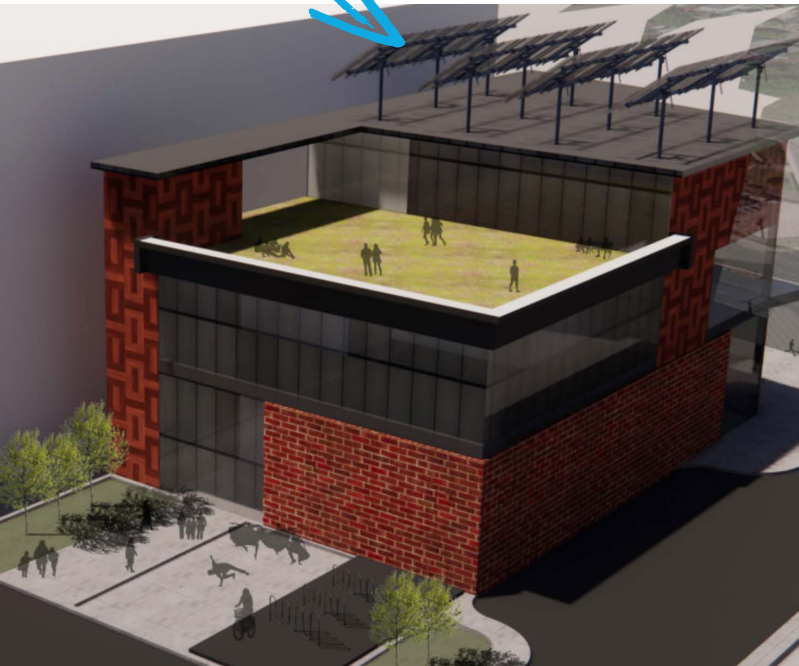
Community gardens and pantries, outdoor learning spaces and classrooms, facade improvements, complete streets, interior design and space planning, adaptive reuse of historic buildings, community and master plans, pocket parks, community centers, and more.



Groups we work with

Neighborhood Organizations, Nonprofits, Community Development Organizations, Urban Farms, Parent Teacher Organizations and school teams, Neighborhood Improvement Associations... you!

No two projects are the same. Many projects combine multiple of these categories & some larger initiatives encompass multiple projects. We want to design with you!



START HERE!

Do you have a project idea supported by other members of your community that we can help you with?

NO

Can you partner with a community group on the project?

NO

We might not be the best resource for you. CDW supports community-initiated projects that include a broad range of community voices.

YES

Great! Is your idea for a project related to the built environment and benefiting the community good?

NO

Let's talk. Our assistance is targeted to urban, architectural, &/or landscape design.

YES

What type of project are you considering?

NEIGHBORHOOD PLAN OR COMMUNITY VISION

Are you in touch with other neighbors and stakeholders in your area?

NO

Let's talk! NDC can support you in building a coalition to ensure all stakeholders are represented.

INTERIOR / BUILDING DESIGN OR PARK / LANDSCAPE PLAN

Do you own or have permission to use the project site?

NO

Let's talk. Most grants and funders will want you to have site control. We can help you understand what that means & how you might go about it.

OTHER TYPE OF PROJECT

Is this directly related to improving communities or the environment?

NO

Let's talk. We want to understand more about the project to know if we can be of service to you.

NO, I NEED DESIGNS SOONER

Are you ready for a 4-12 month process?

YES

CDW relies on volunteers who donate time. NDC does offer design services by staff for a fee. Please call to discuss details of our contract work.

HOORAY!



It seems like CDW is a fit for your project! Applications are accepted on a rolling basis by both NDC offices. If it's easier, give us a call.

See if CDW is a good fit for *your* community.

FAQs

What is conceptual design?

Conceptual design is an early phase of a design process, where the broad outlines of a community's ideas are put on paper. It includes working together to define a vision for the space / place as well as the uses and looks of the project. This is a mix of what's desired or needed and what's possible on the site.

Why just conceptual design?

CDW assistance ends with conceptual design so we can help more organizations launch their projects. Some organizations continue partnering with NDC through other programs or through new CDW projects. You can learn more about NDC's other programs on our website ndc-md.org

Who will be my designers?

NDC recruits volunteer design professional on a per-project basis to ensure our teams include the technical expertise needed for each specific project.

Why can't my organization use the NDC designs for permit or constructions?

Additional design investigation and technical expertise is often necessary to revise conceptual designs to the standard required for permitting and construction. NDC and its volunteers assume no responsibility or liability for any unauthorized use of conceptual plans.

We encourage you to obtain the services of a design firm, architect, or landscape architect as needed for design services beyond conceptual design, and to build into your project the fees for those services.

Why does NDC charge an administrative fee?

NDC's facilitation of the CDW program is subsidized by our funders. The fee is part of your contribution to the process, signalling your commitment to the project. Fees are assessed on a sliding scale based on project size and organizational capacity.

The fee amount, ranging from \$100-\$1000, is agreed upon in the MOU and paid sometime before the end of the partnership. This should not be considered a dealbreaker. Let's talk if a fee is an obstacle to taking on a project.

