

Carbon Footprint report - 2024/25



Carbon Footprint – Methodology & Framework

1. What is a Carbon Footprint Assessment?

It is a diagnostic tool used to measure the greenhouse gas emissions generated by an organization's activities over one year

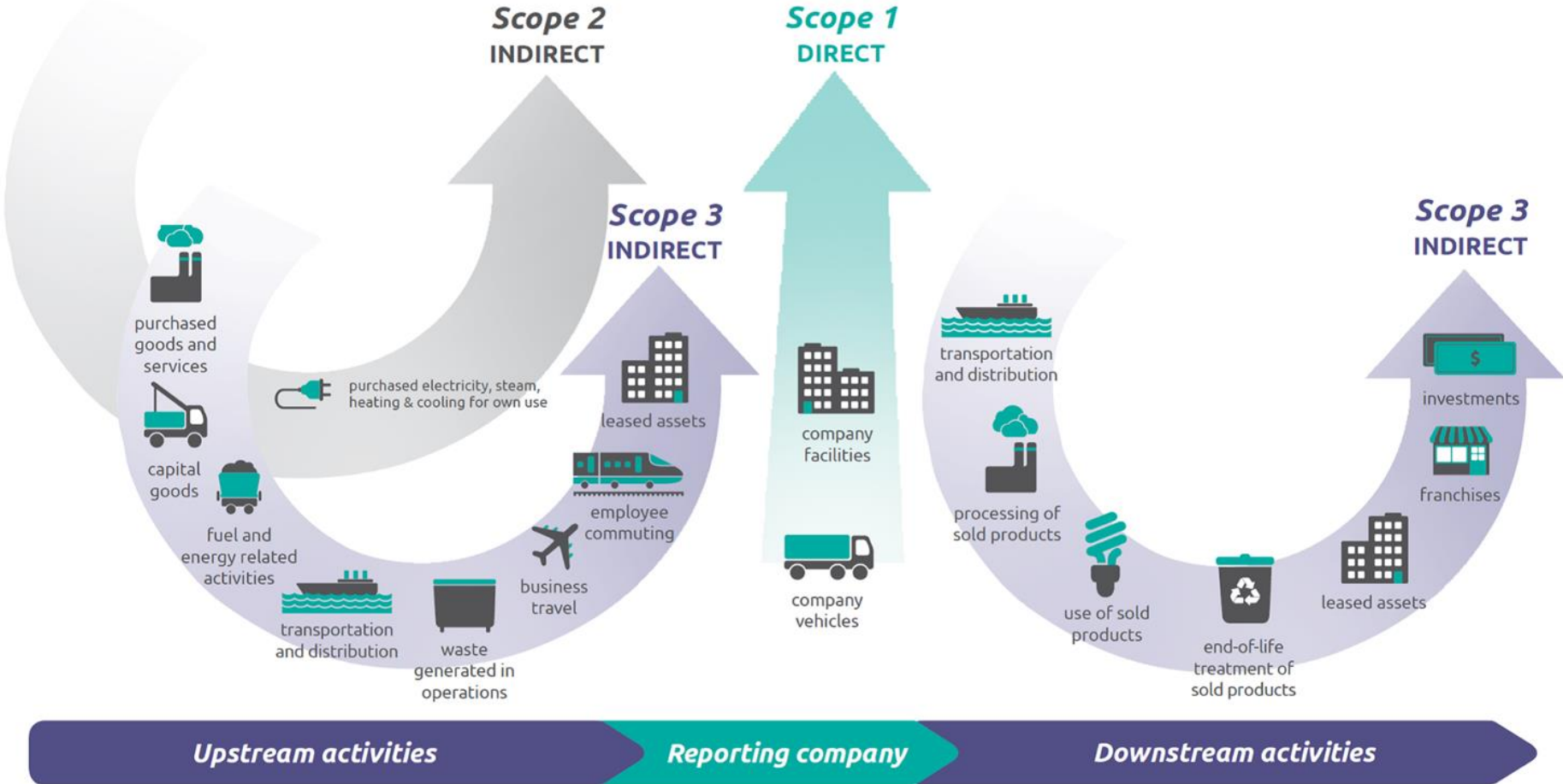
- **Unit of Measurement:** All gases are converted into **tCO₂e** (tons of CO₂ equivalent) to provide a single, comparable metric for all GHG emissions
- Our assessment follows the **ADEME** (French Agency for Ecological Transition) methodology, using the **Base Empreinte** - the national reference database for emission factors - to ensure scientific accuracy and transparency..
- **Data Collection:** activity data (liters, kWh, kilometers) is multiplied by **ADEME Emission Factors** to calculate the total carbon impact

2. Understanding the 3 Scopes

In accordance with international standards (GHG Protocol, ADEME), emissions are categorized based on their source and the level of control:

- **Scope 1 (Direct Emissions):** Greenhouse gas emissions released directly from sources owned or controlled by the organization (e.g., stationary combustion and direct fugitive emissions).
- **Scope 2 (Indirect Energy Emissions):** Indirect emissions associated with the generation of purchased energy, such as electricity, steam, heat, or cooling consumed by the organization.
- **Scope 3 (Other Indirect Emissions):** All other indirect emissions that occur in the organization's value chain, including both upstream and downstream activities.

Scopes 1 2 & 3 - in details



Source: [WRI/WBCSD Corporate Value Chain \(Scope 3\) Accounting and Reporting Standard](#)

Temporal and organisational scope taken into account for the ESSEC carbon footprint assessment

ESSEC's 2024-2025 carbon footprint was measured on the following basis:

Time scope

Academic year 2024-25
(September 2024. to August 2025)

Organisational scope

All the campuses on which ESSEC operates,
and the associated physical flows

Cergy
Campus

La Défense
Campus

Singapore
Campus

Rabat
campus

Scopes taken into account

Scope 1

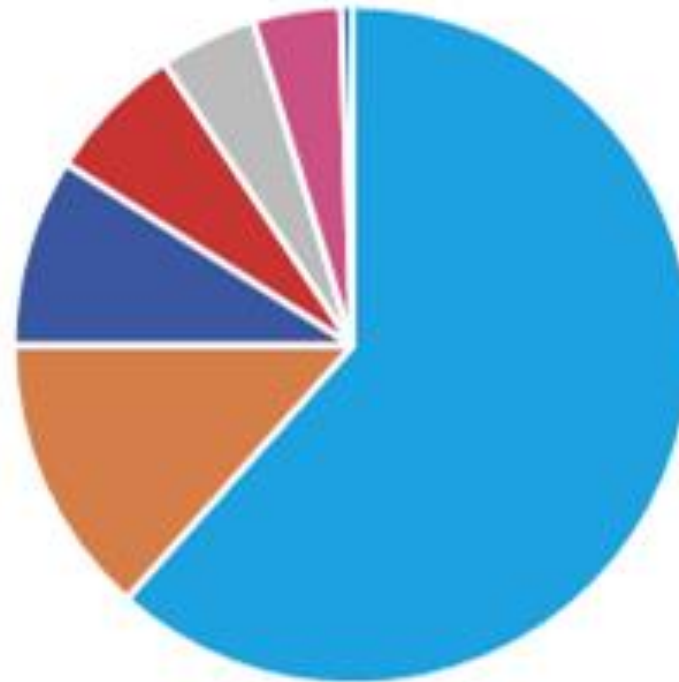
Scope 2

Scope 3

TOTAL Carbon footprint of ESSEC in 24/25

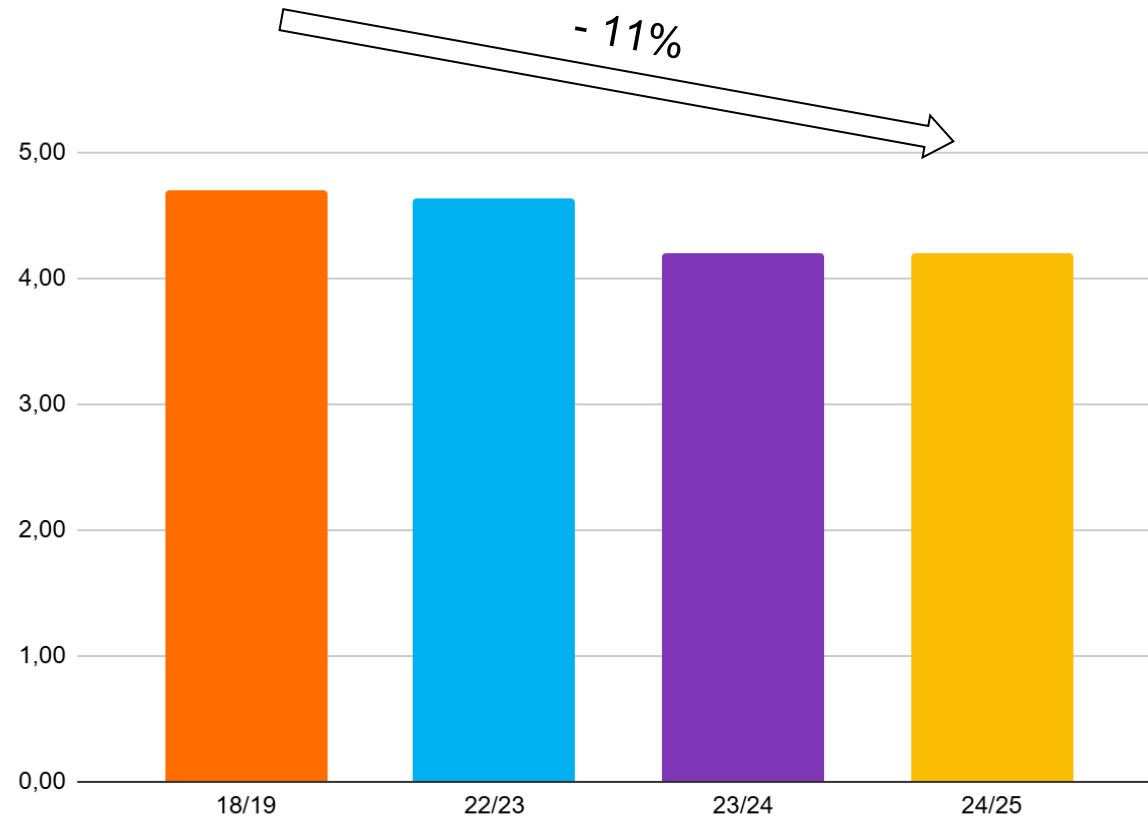
36 654 tCO2e

Breakdown of emissions by type :



- Student mobility
- Purchasing
- Employees' business travels
- Energy
- Digital technology
- Fixed assets
- Waste

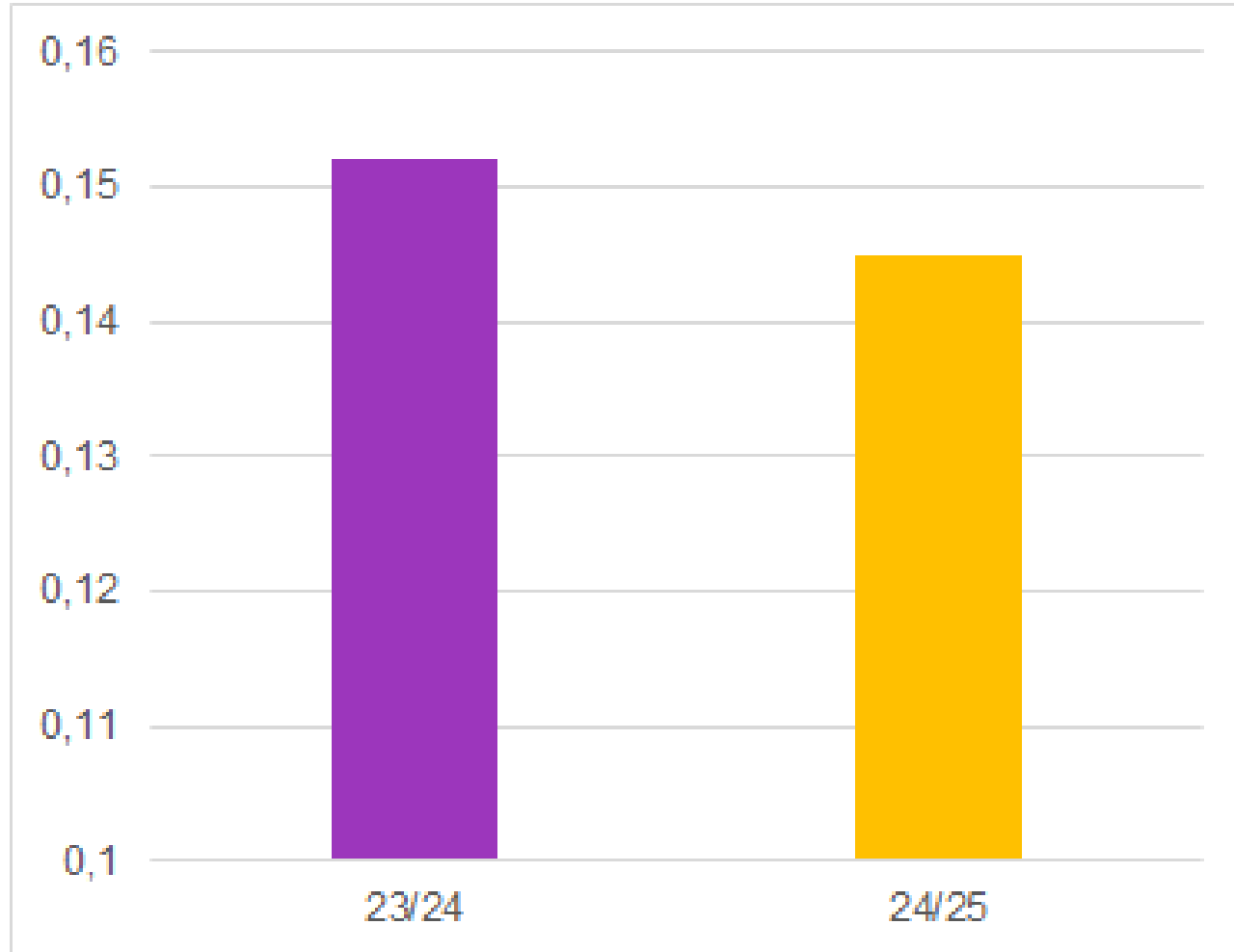
Carbon footprint evolution per student



**ESSEC carbon footprint
in relative terms has
decreased by 11%
since 18/19**

Growth in student population: + 29%

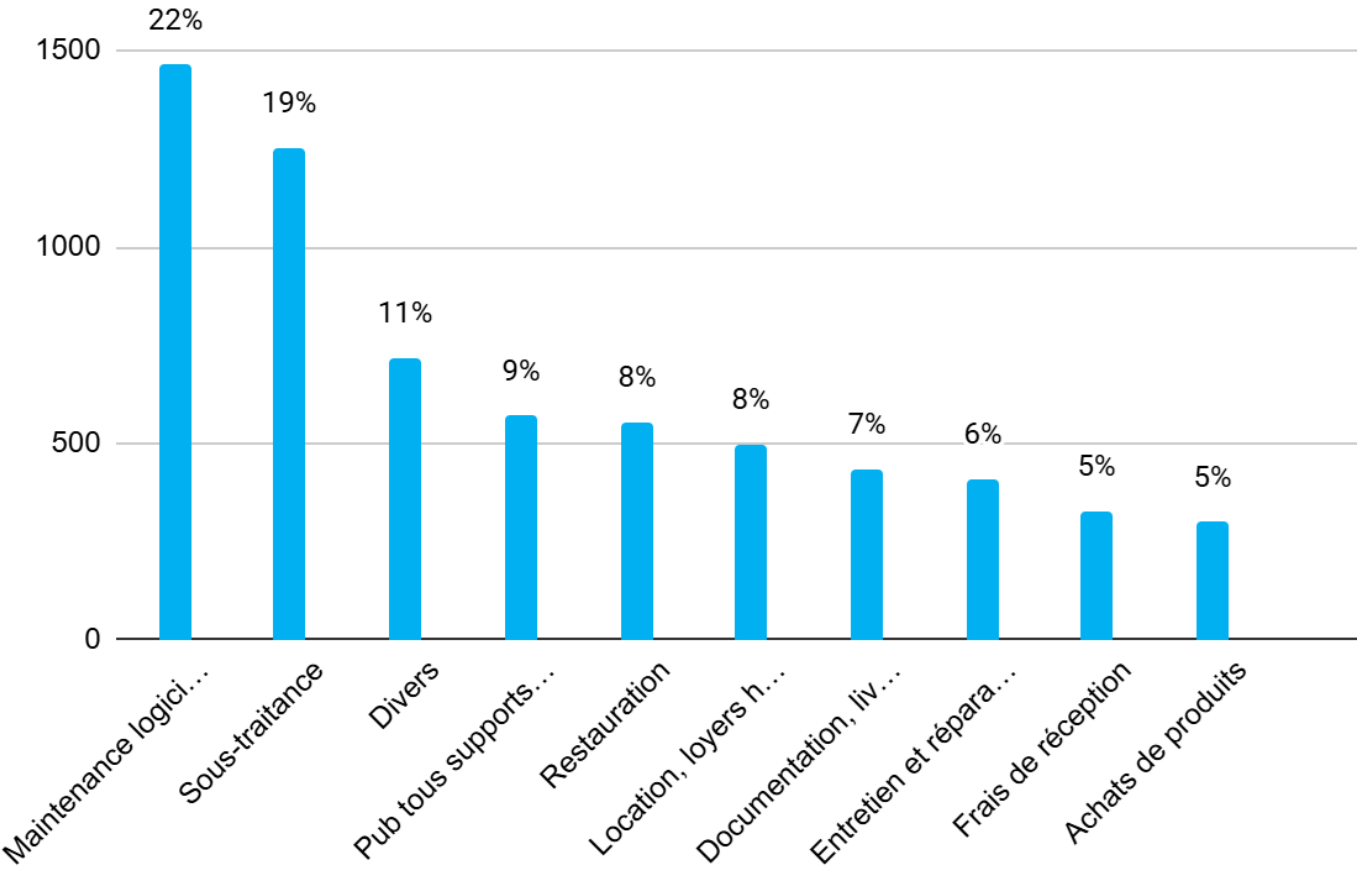
Carbon intensity of Executive Education revenue*



* Unit: kgCO2e /€

Carbon footprint of “purchasing” items

**



Contact: together@essec.edu