

# SOMADERM®

## PRODUCT INFORMATION PAGE

### Introduction

SomaDerm gel is your key to preserving your youth and fighting aging. SomaDerm is safe, effective, and features a homeopathic glandular and botanical blend delivered through an innovative transdermal delivery system. With a foundation of bio-identical somatropin you can say goodbye to painful injections and ineffective oral supplements. SomaDerm is non-invasive and is designed to revitalize your body's natural ability to produce human growth hormone (HGH) resulting in incredible benefits. With more than 6 million bottles sold, hundreds of thousands of people are rediscovering the key to living young: SomaDerm.



## What is Human Growth Hormone?

Human Growth Hormone (HGH) is a naturally occurring protein produced by the pituitary gland that sits at the center of the brain. HGH fuels our childhood growth and affects nearly every cell in the body. HGH is controlled by a complex set of hormones and helps shape the way your organs, bones, muscles, and other tissues of the body are formed. It has been proven to be a very important protein and is often referred to as the master hormone.

Beginning in a person's late 20's and early 30's, the pituitary gland slows the production of this hormone resulting in the typical signs of aging which may include:

- | Feeling sluggish
- | Brittle bones
- | Decreased muscle
- | Increased body fat
- | Slower metabolism
- | Decreased libido

**Human Growth Hormone production gradually declines as you age and studies show that increasing its levels will help you age more youthfully.**

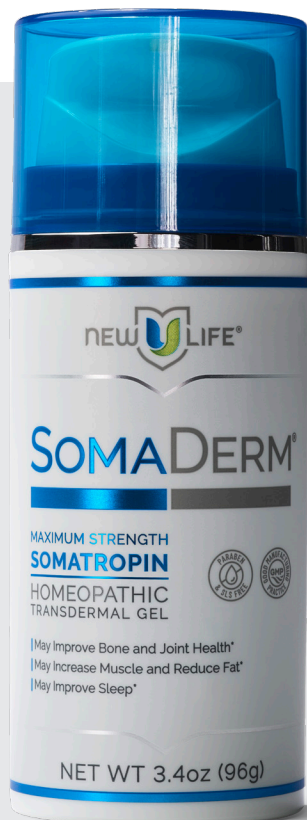
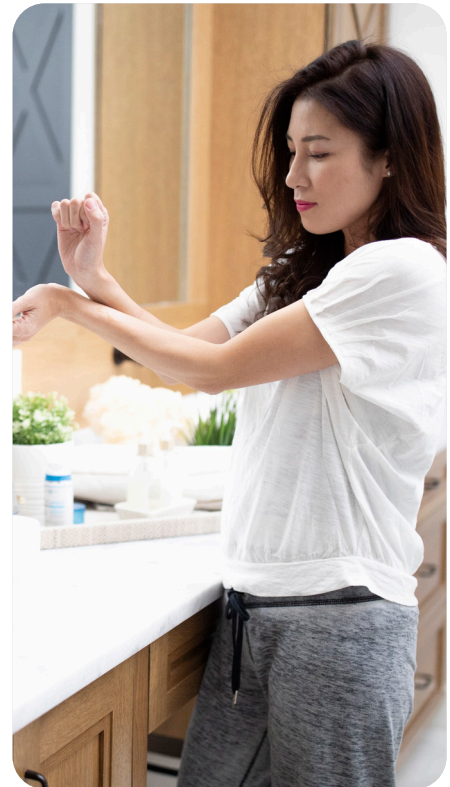
## Benefits of SomaDerm

Key ingredients in SomaDerm have been shown in independent studies to support:

- | An increase in endogenous HGH up to 800%\*
- | An improvement in length and quality of sleep\*
- | An improvement in bone and joint health\*
- | An increase in lean muscle and reduced fat\*
- | An improvement in mental cognition and clarity\*
- | An improvement in sexual vitality\*

Youthful levels of human growth hormone can boost strength and exercise performance, speed up recovery times and are related to body fat levels. Generally speaking, human growth hormone levels rise after exercise and sleep with more being produced at night than during the day. In addition, those with higher body fat typically have lower human growth hormone levels. Overall, higher levels of human growth hormone have desirable effects on the body.

\*These statements have not been evaluated by the Food and Drug Administration. This product is not intended to diagnose, treat, cure or prevent any disease. Always consult a medical doctor before modifying your diet, using any new product, drug, supplement, or beginning any new exercise routine.



## What Makes SomaDerm® Unique?

There has long been a quest to stop the loss of human growth hormone that includes many questionable, invasive, or expensive methods. These often include injections, which have been shown to have many negative side effects, and oral supplements which generally don't make it past the gut biome, eliminating any benefit.

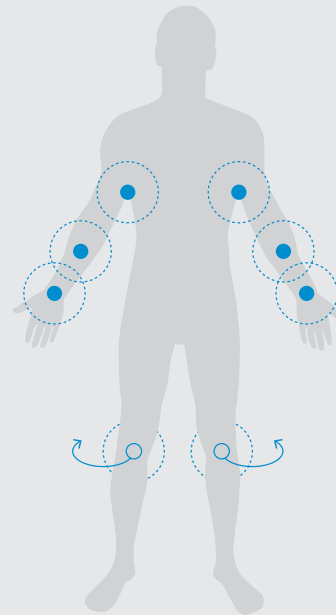
That's where SomaDerm comes in! SomaDerm is a transdermal, homeopathic blend featuring unique glandulars and botanicals. It is formulated utilizing an innovative, bio-identical version called Somatropin. By employing a non invasive transdermal delivery system SomaDerm is grease free, non residue, and quick absorbing. Transdermal delivering ensures the ingredient blend is delivered directly for maximum benefit. With its simple application and unique ingredients, SomaDerm can secure your body's answer to aging.

## Directions for use

### Airless Pump Bottle:

- | Apply 2 full pumps in the morning and 2 full pumps in the evening.
- | Apply five days on, two days off.
- | For intensive use, apply 4 full pumps in the morning and 4 full pumps in the evening.

You may apply SomaDerm gel to your underarms, forearms, wrists, and behind the knees. Applied locations should be rotated so that no area of the skin gets overused. Due to hormones being stored in the fatty tissue layer, SomaDerm gel should always be applied to the thin areas of skin, wherever veins are visible. This aims at delivering SomaDerm gel transdermally to the bloodstream.



## Ingredients

### Active Ingredients

GLANDULA SUPRARENALIS SUIS 6x,  
THYROIDINUM 8x, SOMATROPIN 30x

### Inactive Ingredients

PURIFIED WATER\*, PHENOXYETHANOL  
& CAPRYLYL GLYCOL & SORBIC ACID\*,  
ALOE BARBADENSIS LEAF\*, CAMELLIA  
SINENSIS\*, (GREEN TEA) LEAF\*,  
ACRYLATES/C10-30 ALKYL ACRYLATE  
CROSSPOLYMER\*, GLYCYRRHIZA GLABRA  
(LICORICE) ROOT\*, VITEX AGNUSCASTUS  
(CHASTE TREE) FRUIT\*, EPIMEDIUM  
SAGITTATUM (EPIMEDIUM) AERIAL  
PARTS\*, GINKGO BILOBA (GINKGO) LEAF\*,  
MUCUNA PRURIENS (VELVET BEAN)  
SEED\*, DIOSCOREA VILLOSA (WILD YAM)  
ROOT\*, SODIUM HYDROXIDE\*, ASCORBIC  
ACID\*, PEG-33 & PEG-8 DIMETHICONE  
& PEG-14\*, ALOE BARBADENSIS LEAF  
JUICE\*, TOCOPHEROLS (Soy)\*, EDETATE  
DISODIUM\*, NATURAL PLANT EXTRACT\*,  
POTASSIUM SORBATE\*\*EXTRACT\*

## Complementary Products:

For additional transformational benefits check out more of New U Life's innovative products at [newulife.com](http://newulife.com).

### M\*L\*T

M\*L\*T key ingredients help promote healthy metabolism, weight loss, increase cellular energy efficiency, help reduce appetite, and improve carb tolerance to build you better from the outside in.



### Rose & Cole

Rose & Cole helps you Challenge the Way You Age through DermaType™ technology and a simple 3 step CPR regimen to breathe resilience, vibrance, and beauty into your skin.

