

# PRE-WORKSHOP ACCOUNT SETUP

Please complete the following steps ahead of your Ruminati Emissions Reporting workshop.

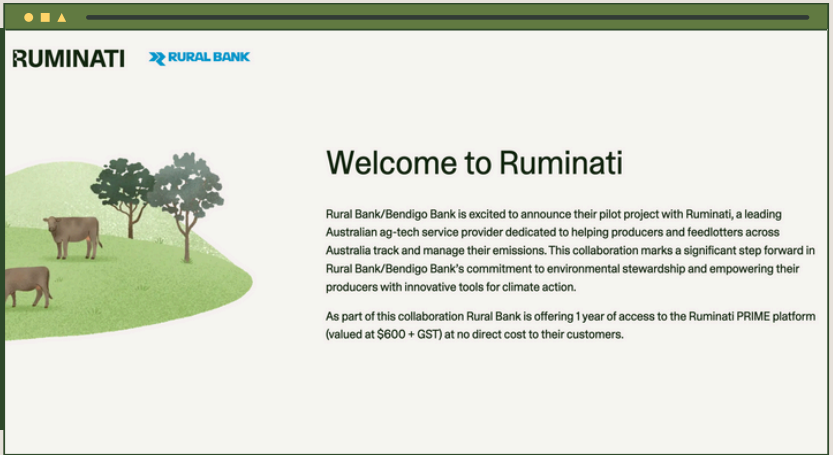
For any questions or support, please email [hello@ruminati.com.au](mailto:hello@ruminati.com.au).

**1** **A**

## VISIT THE LANDING PAGE

<https://ruminati.com.au/collaboration-rural>

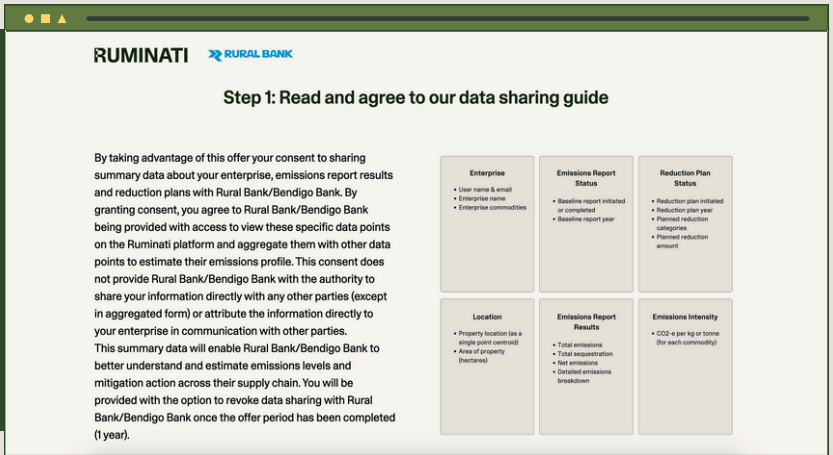
- Read the full contents of the page, including the offer from Rural Bank.
- Download the relevant checklist and fill out the data before attending the workshop. You will use this on the day.



**1** **B**

## CHECK THE DATA SHARE REQUEST

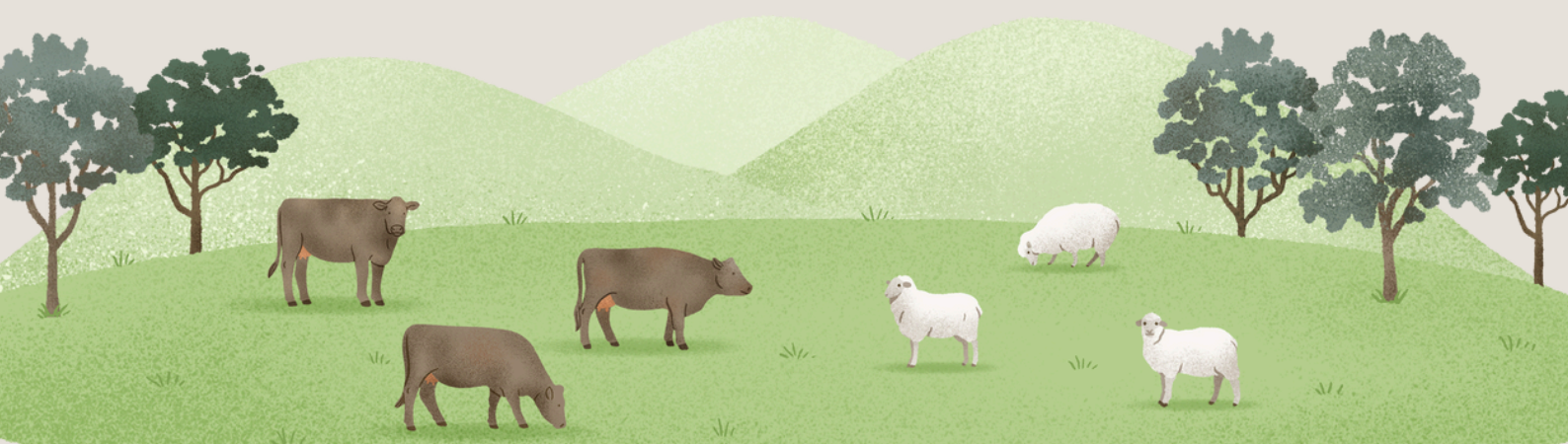
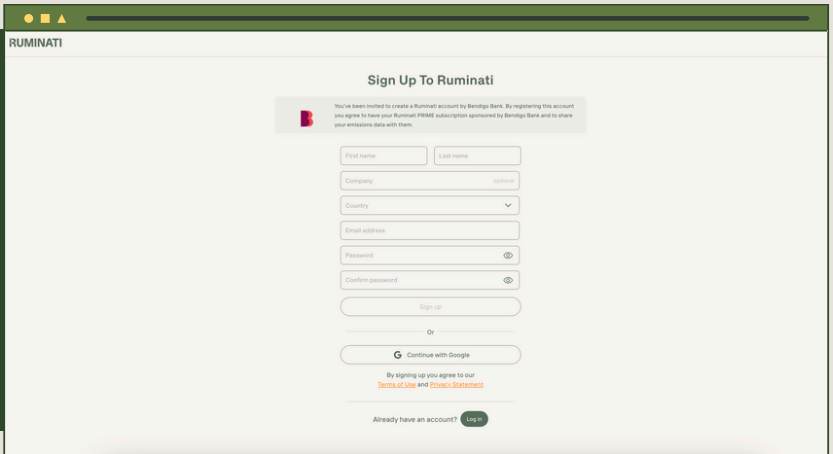
- Before accepting the offer, read the data share request and download the data sharing guide.
- Accept the offer using the orange button at the bottom of the page.



**2**

## ENTER YOUR DETAILS

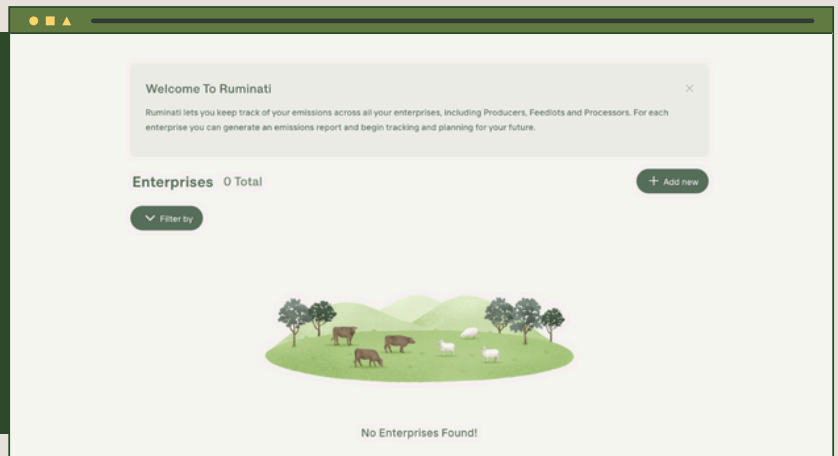
- Enter your details to create a new account with Ruminati.
- You will receive a verification email. Click on the confirmation in the email and you are ready to go!



### 3

## CREATE A NEW ENTERPRISE

- Make sure you are logged in to your new Ruminati account.
- Click on the green 'Add New' button to create a new enterprise.

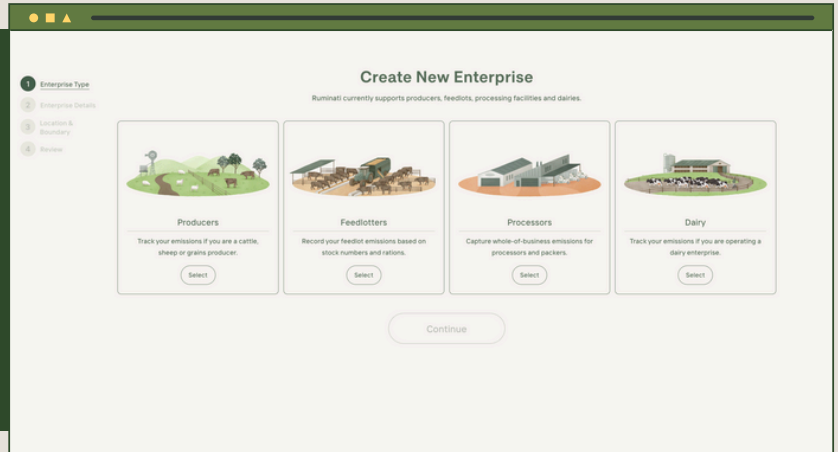


### 4

## CHOOSE YOUR ENTERPRISE

Choose which enterprise type you run:

- **Producers** is for grass-fed beef, sheep (meat and wool), and grain producers.
- **Feedlot** is for those who operate a feedlot (sheep or beef).
- **Dairy** is for those who operate a dairy business.

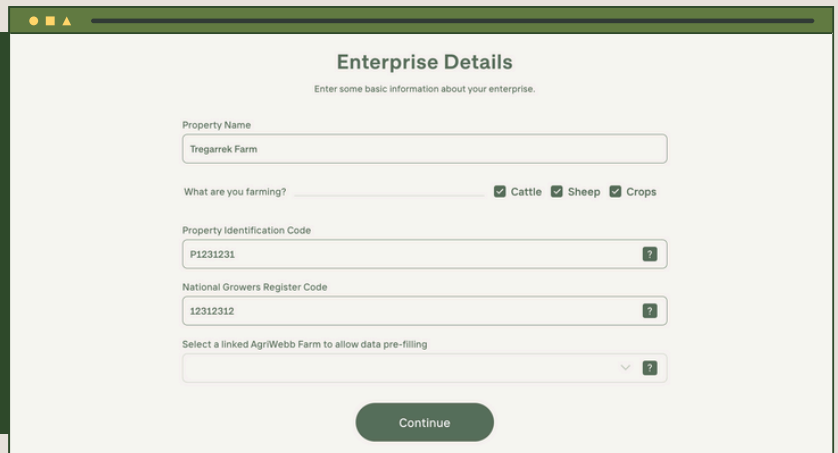


### 5

## ENTER YOUR ENTERPRISE DETAILS

Enter your enterprise details, making sure to tick the relevant boxes:

- For **Producers**: beef, sheep or grain.
- For **Feedlot**: production system.
- For **Dairy Producers**: production system.

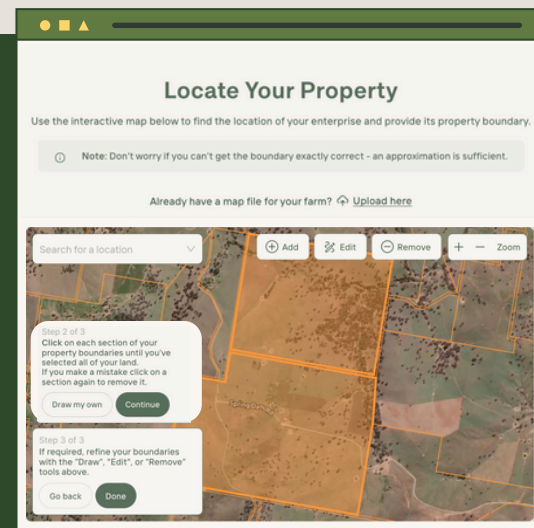
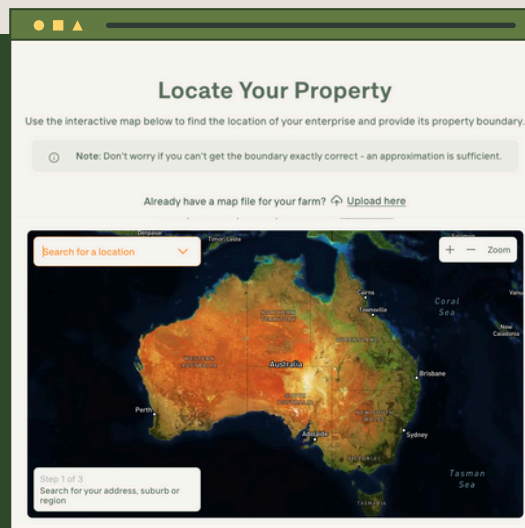


### 6

## LOCATE YOUR PROPERTY

Use the interactive map to locate your property:

- Enter your address to find your location and click on parcels of land.
- Use the drawing tool to edit any boundaries.



Review your enterprise and make any edits needed, then click on 'Save and Continue' to complete.