

DATA SHARING AND PERMISSIONING FAQS



Who can access my data once I add it to the Ruminati platform?

Our platform is designed to ensure you retain complete control over your data at all times. Ruminati does not share your data without your explicit consent.

If you choose to share your data with another organisation, you can do so by providing direct consent to a data share request from that organisation. These requests will specify the purpose for sharing and aggregating farm data. A data share request will be communicated via email, a corporate partner web page, and within the Ruminati platform. Be sure to carefully read the data share request before consenting to share your data.

What happens when an organisation requests that you share some of your data with them?

1. You'll receive an email/access to a web page providing specific information on what data they are requesting you share (your total emissions number from your baseline and any emissions reduction activities you've commenced).

2. OR you can view that data share request on the Corporate Partners page within your Ruminati account. No information will be shared by Ruminati until you have provided consent.

Note: You can revoke data sharing at any time via the Corporate Partners page. Where your access to a PRIME subscription has been via use of a voucher provided by a corporate partner, you will be able to stop sharing your data with that partner, only once the voucher term has been completed. If you revoke data sharing, previously shared emissions summary data will still remain accessible to the corporate partner but no new data will be added.

When I consent to sharing my data with another organisation, what do they see and how can they use that information?

Each data share request you receive details the exact datapoints you're agreeing to share with that organisation.

These include:

- Basic details on your enterprise, such as its name, location and your email.
- Whether you've commenced or completed your baseline, or started reduction planning.
- Your emissions summary data, or results of your baseline and reduction plan report.

Make sure to read the request carefully.



DATA SHARING AND PERMISSIONING FAQS

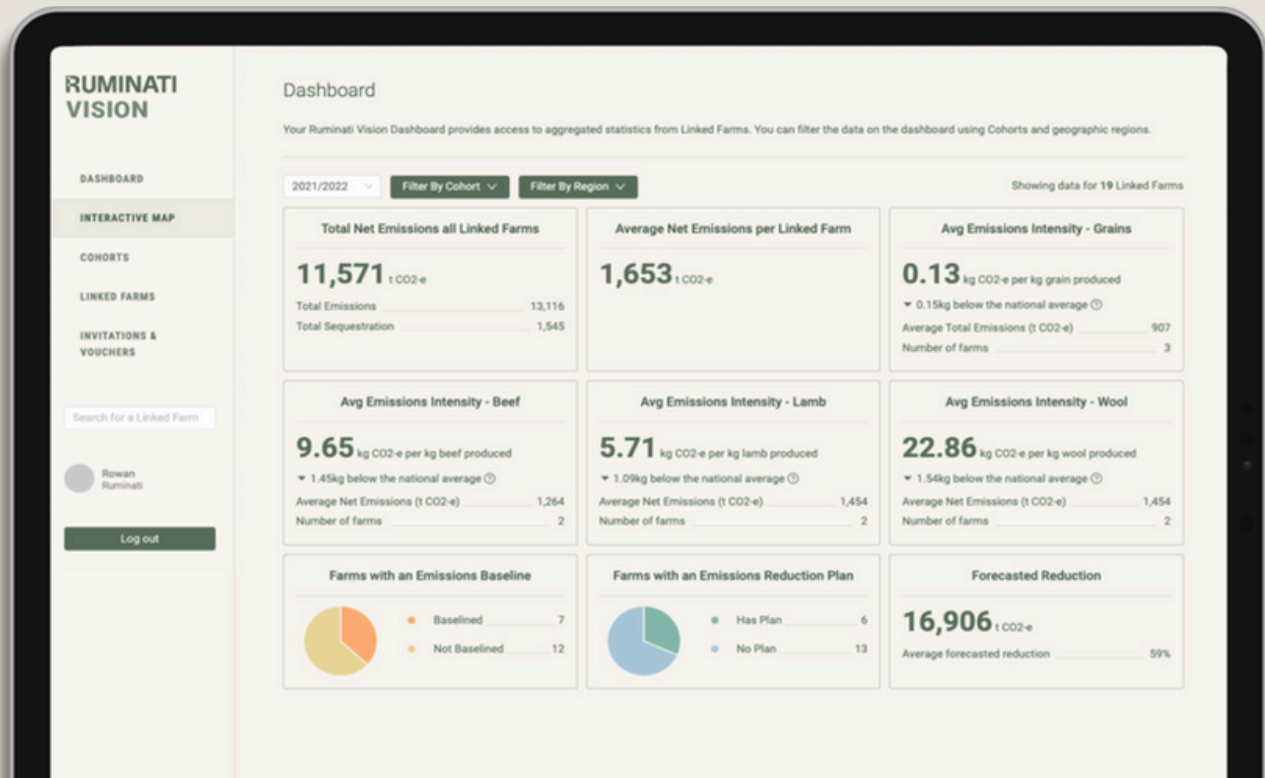
What does the organisation see?

When you confirm your consent to share your data, it becomes available to the requesting organisation in their Ruminati VISION Dashboard. The requesting organisation will never see your farm level data, only the summary data on emissions that you have consented to share (farm's total emissions and emissions intensity).

Your summary data can then be used with other farm's summary data to construct an aggregated view of different supply chain's emissions through the Ruminati VISION dashboard.

Ruminati VISION does not enable organisations to share your summary information with others, and Ruminati's terms of use prohibit them publicly attributing any data to your enterprise.

Here's an example of what organisations see on their Ruminati VISION dashboard:



How can I delete my data?

There are two ways you can delete your farm data:

- You can do it yourself directly within the platform by either removing the raw data inputs or deleting the entire enterprise.
- You can request the deletion of your farm data by emailing our Customer Success team at hello@ruminati.com.au.

Please note that even when raw data is deleted, if you have consented to sharing your emissions summary data with a corporate partner, that information will remain shared as per your prior consent.

DATA SHARING AND PERMISSIONING FAQS



If I close my account, what happens to my data?

You can close your account at any time by contacting our team at hello@ruminati.com.au. Once we receive your request, our Engineering team will process it within 1 business day.

After you close your Ruminati account, we will retain your data for 30 days before it is permanently deleted. During this period, you have the opportunity to download and save your emissions report as a PDF. Please note that we do not currently offer the option to download raw farm data.

When we process an account closure, all personally identifiable information, such as raw farm inputs, will be removed. However, any historical emissions results that you shared with corporate partners will remain accessible to those partners, as per your prior consent.

How does Ruminati protect my privacy and confidentiality?

We care deeply about protecting the confidentiality of your farm data and keeping your details private.

Our data privacy and cybersecurity policy puts in place robust information security and cyber security safeguards, to ensure your data is collected, stored and protected in accordance with industry best practice, at all times.

Your data is never stored, sent or processed outside of Australia. You can find out more information on our data privacy policy on our website or at this link: <https://ruminati.com.au/policies/privacy>.

Does Ruminati use my data for any other purpose?

Ruminati's Terms Of Use permit us only to use any data you contribute to our platform in the delivery of the services to you, such as generation of your emissions report, or in aggregated form, to generate regional or industry-level insights.

In other words, we will only utilise your data to produce aggregated insights where any details which could identify your company or your property specifically have been removed and your data has been pooled with others.

We will never directly attribute data or insights to your organisation, unless we have your direct and explicit consent to do so.

You can find out more information on our terms of use on our website, at this link: <https://ruminati.com.au/policies/terms>

-END-