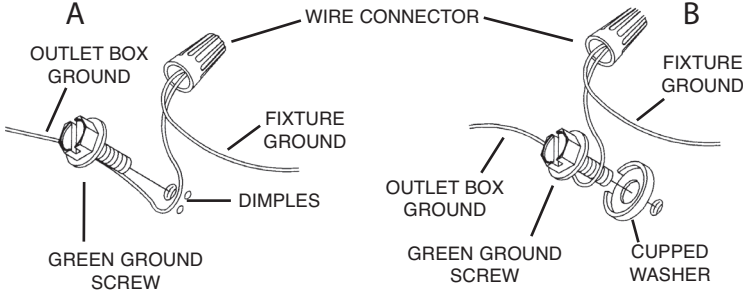


CAUTION – RISK OF SHOCK –

Disconnect Power at the main circuit breaker panel or main fuse box before starting and during the installation.

- 1) Assemble mounting screws into threaded holes in mounting strap.
- 2) Attach mounting strap to outlet box.
- 3) Grounding instructions: (See Illus. A or B).
 - A) On fixtures where mounting strap is provided with a hole and two raised dimples, wrap ground wire from outlet box around green ground screw and thread into hole.
 - B) On fixtures where a cupped washer is provided, attach ground wire from outlet box under cupped washer and green ground screw then thread into mounting strap.

If fixture is provided with ground wire, connect fixture ground wire to outlet box ground wire with wire connector (not provided.) after following the above steps. Never connect ground wire to black or white power supply wires.

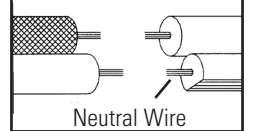


- 4) Attach the safety cable to the building structure or brace.

- 5) Make wire connections. Reference chart below for correct connections and wire accordingly.

Connect Black or Red Supply Wire to:	Connect White Supply Wire to:
Black	White
*Parallel cord (round & smooth)	*Parallel cord (square & ridged)
Clear, Brown, Gold or Black without tracer	Clear, Brown, Gold or Black with tracer
Insulated wire (other than green) with copper conductor	Insulated wire (other than green) with silver conductor

*Note: When parallel wires (SPT I & SPT II) are used. The neutral wire is square shaped or ridged and the other wire will be round in shape or smooth (see illus.)



- 6) Push fixture to ceiling, carefully passing mounting screws through holes.
- 7) Secure fixture to ceiling with threaded knobs.

Adjusting position of fixture after installation for leveling purpose of one inch or less:

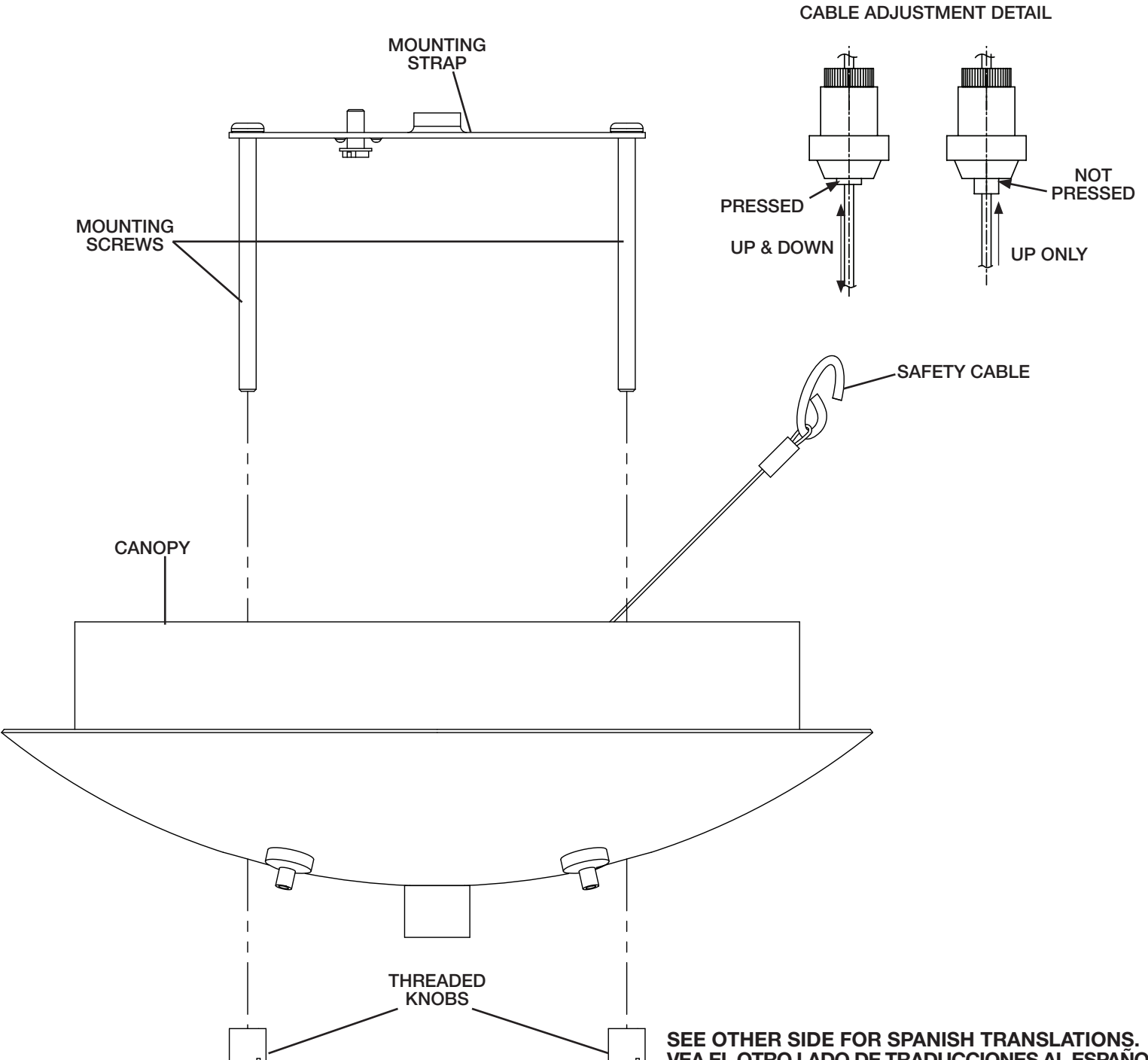
TO RAISE FIXTURE:

Push cable up into the fixture body. Release cable and cable will lock into place.

TO LOWER FIXTURE:

Push button in on the cable adjuster and pull cable down. Release button to lock cable in place.

NOTE: When button is pushed in, cable will raise and lower. When button is out, cable will only raise up and lock in place.



**SEE OTHER SIDE FOR SPANISH TRANSLATIONS.
VEA EL OTRO LADO DE TRADUCCIONES AL ESPAÑOL.**